

DESCRIPTION

Solenoid valve 2 way direct acting poppet type . Bi-stable impulse drive. The bi-stable function is achieved by the use of a polarised permanent magnet energising the coil with a DC current for at least 15ms in the reverse direction of the preceding impulse.



2

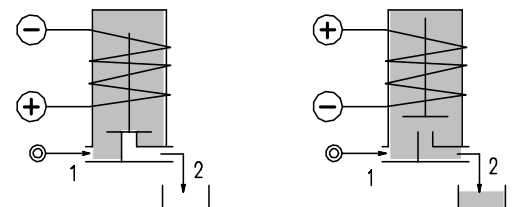
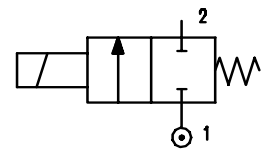
CONSTRUCTION

Body	Brass
Armature tube	Stainless steel
Plunger and core	Stainless steel
Magnet	NeFeB
Springs	Stainless steel
Seal	NBR
	FPM
	EPDM

FEATURES

Maximum allowable pressure 50 bar *
 Maximum fluid viscosity 25cSt (mm²/s)
 Ambient temperature : with class F coil -10°C +55°C
 with class H coil -10°C +80°C
 Universal mounting position

OPTIONS : Stainless steel seat insert
 Electroless nickel plating
 Special powers



CODE ① ②	Connection G ISO 228	Orifice mm	KV m ³ /h	Differential pressure bar			Nominal power			Coil		Seal ①	Temp. range °C
				Min	Max		AC Inrush	VA Holding	DC Watt	Series	Width		
					AC	DC							
D116A.....15///.....	1/8"	1.5	0.07	0	-	26	-	-	10	2	30	NBR=B -10 +90	
D116A.....20///.....		2	0.1	0	-	20							
D116A.....25///.....		2.5	0.15	0	-	14							
D116A.....35///.....		3.5	0.32	0	-	8							
D116B.....15///.....	1/4"	1.5	0.07	0	-	26							
D116B.....20///.....		2	0.1	0	-	20							
D116B.....25///.....		2.5	0.15	0	-	14							
D116B.....35///.....		3.5	0.32	0	-	8							
D116B.....45///.....		4.5	0.41	0	-	3.5							
D116B.....52///.....	5.2	0.47	0	-	1.8								
D116C.....30///.....	3/8"	3	0.25	0	-	10							
D116C.....35///.....		3.5	0.32	0	-	8							
D116C.....40///.....		4	0.36	0	-	5							
D116C.....45///.....		4.5	0.41	0	-	3.5							
D116C.....52///.....		5.2	0.47	0	-	1.8							
D116D.....30///.....	1/2"	3	0.25	0	-	10							
D116D.....35///.....		3.5	0.32	0	-	8							
D116D.....40///.....		4	0.36	0	-	5							
D116D.....45///.....		4.5	0.41	0	-	3.5							
D116D.....52///.....		5.2	0.47	0	-	1.8							

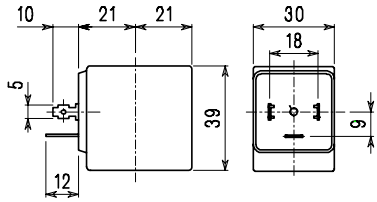
① Seal Example: D116BB25///201 NBR seal
 ② Coil Coil 24V DC

* REMARK: The maximum allowable pressure PS for steam is 2,5 bar (gauge pressure) with EPDM seals

COIL	Direct Current Volt			Electrical connection	Connectors
	12	24	48		
Series 2 Width 30 Code ②	200	201	202	DIN 43650A	PG9 code 10349000

DESCRIPTION
 Insulation class F
 Voltage tolerance $\pm 10\%$
 Protection class
 IP65 with connector fitted
 IP00 without connector

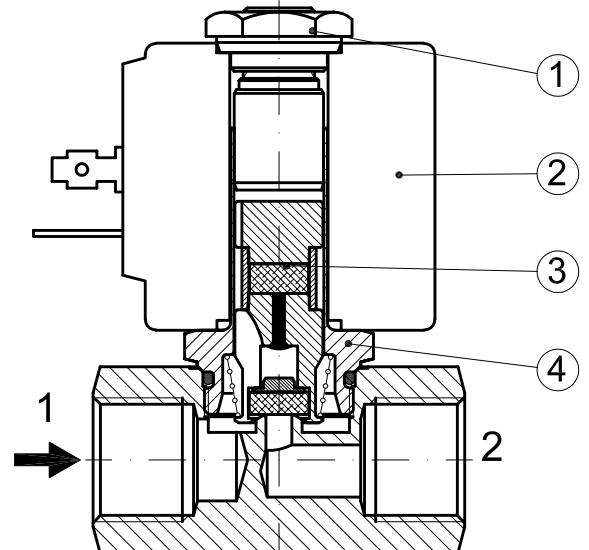
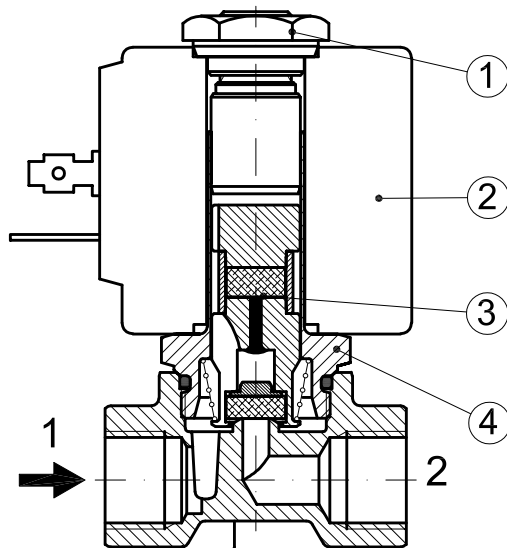
OPTIONS
 Class H insulation
 Cable attached
 Special coil voltages
 Special coil powers



Series 2 Weight 0.12Kg

SPARE PARTS LIST

1. Coil fixing nut
2. Coil
3. Plunger assembly
4. Armature tube assembly



OVERALL DIMENSION

