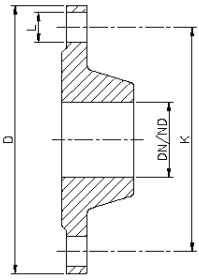
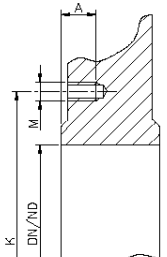


CARATTERISTICHE TECNICHE TECHNICAL CHARACTERISTICS



Dettaglio Flangia
Flange detail



Dettaglio corpo
Body detail

| DN | | UNI EN 1092-1 PN 10 (Ex UNI EN 2277-67 PN 10) | | | Necessario per assemblaggio tra 2 flange Equipment for assembling between 2 flanges | | | | |
|--------|------|--|--|--|--|--|---|--------------------------------------|------------------------------------|
| | | Diametro esterno External diameter D | Interasse Fori Drilling circle K | Numero Fori x Ø L Hole number x Ø L | Viti numero x M - Lg Screw number x M - Lg | Bulloni numero x M - Lg Bolts number x M - Lg | Profondità Fori Threading depth A | Spessore Flangia Thickness flange | Scartamento Valvola Gauge Valve |
| Inch | mm | mm | mm | no. x Ø | mm | mm | mm | mm | mm |
| 2" | 50 | Ø 165 | Ø 125 | 4 x Ø 18 | 8 x M16 - 25 | * | 11 | 18 | 45 |
| 2" 1/2 | 65 | Ø 185 | Ø 145 | 4 x Ø 18 | 8 x M16 - 25 | * | 11 | 18 | 45 |
| 3" | 80 | Ø 200 | Ø 160 | 4 x Ø 18 | 8 x M16 - 30 | * | 11 | 20 | 45 |
| 4" | 100 | Ø 220 | Ø 180 | 8 x Ø 18 | 8 x M16 - 30 | 4 x M16 - 140 | 11 | 22 | 50 |
| 5" | 125 | Ø 250 | Ø 210 | 8 x Ø 18 | 8 x M16 - 30 | 4 x M16 - 140 | 11 | 24 | 50 |
| 6" | 150 | Ø 285 | Ø 240 | 8 x Ø 22 | 8 x M20 - 35 | 4 x M20 - 150 | 12 | 24 | 55 |
| 8" | 200 | Ø 340 | Ø 295 | 8 x Ø 22 | 8 x M20 - 35 | 4 x M20 - 160 | 12 | 26 | 60 |
| 10" | 250 | Ø 395 | Ø 350 | 12 x Ø 22 | 12 x M20 - 35 | 6 x M20 - 160 | 12 | 28 | 60 |
| 12" | 300 | Ø 445 | Ø 400 | 12 x Ø 22 | 12 x M20 - 35 | 6 x M20 - 160 | 12 | 28 | 60 |
| 14" | 350 | Ø 505 | Ø 460 | 16 x Ø 22 | 20 x M20 - 40 | 6 x M20 - 180 | 14 | 30 | 70 |
| 16" | 400 | Ø 565 | Ø 515 | 16 x Ø 25 | 20 x M24 - 50 | 6 x M24 - 210 | 22 | 32 | 90 |
| 18" | 450 | Ø 615 | Ø 565 | 20 x Ø 25 | 28 x M24 - 50 | 6 x M24 - 230 | 22 | 32 | 110 |
| 20" | 500 | Ø 670 | Ø 620 | 20 x Ø 25 | 28 x M24 - 55 | 6 x M24 - 230 | 22 | 34 | 110 |
| 24" | 600 | Ø 780 | Ø 725 | 20 x Ø 30 | 28 x M27 - 55 | 6 x M27 - 240 | 24 | 36 | 110 |
| 28" | 700 | Ø 895 | Ø 840 | 24 x Ø 30 | 32 x M27 | 8 x M27 | 24 | 38 | 110 |
| 32" | 800 | Ø 1015 | Ø 950 | 24 x Ø 33 | 32 x M30 | 8 x M30 | 24 | 40 | 110 |
| 36" | 900 | Ø 1115 | Ø 1050 | 28 x Ø 33 | 40 x M30 | 8 x M30 | 24 | 42 | 120 |
| 40" | 1000 | Ø 1230 | Ø 1160 | 28 x Ø 36 | 40 x M33 | 8 x M33 | 24 | 44 | 120 |
| 48" | 1200 | Ø 1455 | Ø 1380 | 32 x Ø 39 | * | * | * | * | * |



VITE
SCREW

BULLONE
BOLT



DN50÷DN80
n°4+4 fori
n°8 viti
DN50÷DN80
n°4+4 holes
n°8 screws



DN100÷DN200
n°8+8 fori
n°8 viti + n°4 bulloni
DN100÷DN200
n°8+8 holes
n°8 screws + n°4 bolts



DN250÷DN300
n°12+12 fori
n°12 viti + n°6 bulloni
DN250÷DN300
n°12+12 holes
n°12 screws + n°6 bolts



DN350÷DN400
n°16+16 fori
n°20 viti + n°6 bulloni
DN350÷DN400
n°16+16 holes
n°20 screws + n°6 bolts



DN450÷DN600
n°20+20 fori
n°28 viti+n°6 bulloni
DN450÷DN600
n°20+20 holes
n°28 screws + n°6 bolts



DN700÷DN800
n°24+24 fori
n°32 viti + n°8 bulloni
DN700÷DN800
n°24+24 holes
n°32 screws + n°8 bolts



DN900÷DN1000
n°28+28 fori
n°40 viti + n°8 bulloni
DN900÷DN1000
n°28+28 holes
n°40 screws + n°8 bolts