



# DK Hydraulic Pipe Fittings

Class 2000, 3000, 6000, 9000 fittings

Catalog No. C-1  
April 2005

**DK pipe fittings are designed and manufactured to the following standards.**

- ASME B 16.11-1996: Forged fittings, Socket-welding and Threaded.
- ASME B 16.14-1991: Ferrous Pipe Plugs, Bushings, and Locknuts with Pipe Threads.
- JIS B 2316-1991: Steel socket-welding pipe Fittings
- BS 3799-1974: Specification for steel pipe fittings, screwed and socket-welding for the petroleum Industry.



### Class Ratings

ASME B16.11-1996 specifies the types of fittings by class designation and DN (NOMINAL DIAMETER) and NPS (NOMINAL PIPE SIZE) range.

**Table 1. Fitting Class Rating** DN(NPS)

Description	Socket-Weld			Threaded		
	Class Designation			Class Designation		
	3000	6000	9000	2000	3000	6000
45 deg., 90 deg. Elbows	DN6-DN100 (1/8-4)	DN6-DN50 (1/8-2)	DN15-DN50 (1/2-2)	DN6-DN100 (1/8-4)	DN6-DN100 (1/8-4)	DN6-DN100 (1/8-4)
Tees, Crosses	DN6-DN100 (1/8-4)	DN6-DN50 (1/8-2)	DN15-DN50 (1/2-2)	DN6-DN100 (1/8-4)	DN6-DN100 (1/8-4)	DN6-DN100 (1/8-4)
Coupling, Half-Coupling	DN6-DN100 (1/8-4)	DN6-DN50 (1/8-2)	DN15-DN50 (1/2-2)	...	DN6-DN100 (1/8-4)	DN6-DN100 (1/8-4)
Cap	DN6-DN100 (1/8-4)	DN6-DN100 (1/8-4)	DN15-DN50 (1/2-2)		DN6-DN100 (1/8-4)	DN6-DN100 (1/8-4)
Square, Hex, Round Plug				DN6-DN100 (1/8-4) (See Note (1))		
Hex and Flush Bushing				DN6-DN100 (1/8-4) (See Note (1))		

Note: (1) Plugs and bushings are not identified by Class Designation. They may be used for ratings up through Class 6000 designation

**Table 2. NPS vs., DN**

NPS	1/8	1/4	3/8	1/2	3/4	1	1-1/4	1-1/2	2	2-1/2	3	4
DN	6	8	10	15	20	25	32	40	50	65	80	100
Pipe OD	Unit : mm											
ANSI	10.29	13.72	17.14	21.34	26.67	33.40	42.16	48.26	60.32	73.02	88.90	101.60
JIS	10.50	13.80	17.30	21.70	27.20	34.00	42.70	48.60	60.50	76.30	89.10	101.60

\* NPS: Nominal Pipe size used for **inch** dimensioned fittings

\* DN: Nominal diameter used for **millimeter** dimensioned fittings

The fitting class has relation to Schedule No. and Wall designation of pipe for calculation of ratings. See Table 3.

**Table 3.**

Class Designation of Fitting	Type of Fitting	Pipe Used For Rating Basis (See Note)	
		Schedule No	Wall Designation
2000 3000 6000	Threaded Threaded Threaded	80 160 ...	XS ... XXS
3000 6000 9000	Socket-Welding Socket-Welding Socket-Welding	80 160 ...	XS ... XXS

Note: This table is not intended to restrict the use of pipe of thinner or thicker wall with fittings. Pipe actually used may be thinner or thicker in nominal wall than that shown in table 3. When thinner pipe is used, its strength may govern the rating. When thicker pipe is used (e.g., for mechanical strength), the strength of the fitting governs the rating.

## Surface Protection

Stainless Steel fittings are cleaned and passivated.  
 Carbon Steel Elbow, Tee, Cross and Coupling are oiled.  
 Carbon Steel Hex nipple, Bushing, Socket, and Plug are phosphated then oiled  
 Carbon Steel Union is galvanized.

## Marking

Each fitting shall be permanently marked by the means of stamping according to ASME B16.11-1996.

## Materials

DK hydraulic pipe fittings are constructed from forgings and bar stock.

**Table 4.**

Fitting Material	Bar Stock	Forging
Stainless Steel Type 316	ASTM A 276, JIS G4303 SUS316	ASTM A 182-F316, JIS G3214
Carbon Steel	Jis G4051 S20C-S45C	ASTM A 105, ASTM A 234. JIS G4051 S20C-45C

## How to order

Select fitting part number, pipe size, pipe thread symbol and fitting material from designators listed below

C3L -02 R -S  
 (1) (2) (3)

### (1) Pipe Size Designator

Nom.Size	1/8	1/4	3/8	1/2	3/4	1	1-1/4	1-1/2	2
Designator	01	02	03	04	06	08	10	12	16

### (2) Pipe Thread Symbol

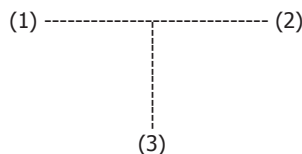
Symbol	Specification
R	Taper Pipe Thread, ISO 7/1, BS21 (BSPT), JIS B 0203 (PT), DIN 2999
N	Taper Pipe Thread, ANSI B1.20.1 (NPT)

### (3) Fitting Material Designator

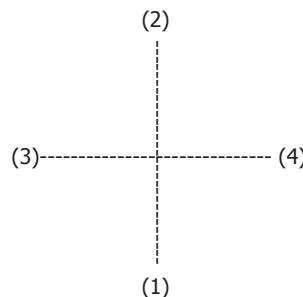
Material	Stainless Steel 316	Carbon Steel
Designator	S	C

## Method of designating outlets of reducing tees and crosses

Tees are described by first the runs (1), (2) and next the branch (3)



Crosses are described by first the branches (1),(2) and next the runs (3), (4).



# Technical Data

**Table 5. Fitting working pressure in different temperature**

Unit: psig

Temperature C (F)	Class 2000 Threaded Fittings			Class 3000 Socket Welding & Threaded Fittings			Class 6000 Socket Welding & Threaded Fittings		
	Carbon Steel	F304	F316	Carbon Steel	F304	F316	Carbon Steel	F304	F316
37 (100)	2000	1715	2000	3000	2570	3000	6000	5145	6000
65 (150)	1970	1615	1970	2950	2425	2950	5915	4855	5915
93 (200)	1940	1520	1940	2915	2280	2915	5830	4565	5830
121 (250)	1915	1445	1915	2875	2170	2875	5750	4340	5750
148 (300)	1895	1370	1896	2845	2055	2845	5690	4115	5690
176 (350)	1875	1310	1875	2810	1965	2810	5625	3930	5625
204 (400)	1850	1245	1850	2775	1870	2775	5550	3745	5550
232 (450)	1810	1195	1810	2715	1790	2715	5430	3585	5430
260 (500)	1735	1140	1735	2605	1715	2605	5210	3430	5210
287 (550)	1640	1100	1640	2460	1650	2460	4925	3305	4925
315 (600)	1540	1060	1540	2310	1590	2310	4620	3180	4620
343 (650)	1430	1020	1430	2150	1535	2150	4300	3070	4300
371 (700)	1305	985	1370	1960	1480	2055	3920	2960	4110
398 (750)	1180	950	1305	1775	1425	1960	3550	2850	3920
426 (800)	1015	915	1240	1525	1370	1865	3050	2745	3730
454 (850)	830	880	1180	1250	1330	1770	2500	2660	3540
482 (900)	615	860	1115	925	1290	1675	1855	2580	3350
510 (950)	425	845	1055	640	1270	1580	1295	2540	3165
537 (1000)	235	830	990	350	1250	1485	715	2500	2975

**Table 6. Wall Thickness of Welded and Seamless Pipe**

Nominal Pipe Size		Outside Diameter		Nominal Wall Thickness								
DN	NPS	JIS	ANSI	SPP SGP	Sch 5s	Sch 10s	Sch 10	Sch 20s	Sch 20	Sch 30	Sch 40s	Sch 40
6	1/8	10.50	10.29	-	-	1.24	-	1.5	-	-	1.73	1.73
8	1/4	13.80	13.72	-	-	1.65	-	2.0	-	-	2.24	2.24
10	3/8	17.30	17.14	-	-	1.65	-	2.0	-	-	2.31	2.31
15	1/2	21.70	21.34	2.8	1.65	2.11	-	2.5	-	-	2.77	2.77
20	3/4	27.20	26.67	2.8	1.65	2.11	-	2.5	-	-	2.87	2.87
25	1	34.00	33.40	3.2	1.65	2.77	-	3.0	-	-	3.38	3.38
32	1 1/4	42.70	42.16	3.5	1.65	2.77	-	3.0	-	-	3.56	3.56
40	1 1/2	48.60	48.26	3.5	1.65	2.77	-	3.0	-	-	3.68	3.68
50	2	60.50	60.32	3.8	1.65	2.77	-	3.5	3.20	-	3.91	3.91
65	2 1/2	76.30	73.02	4.2	2.11	3.05	-	3.5	4.50	-	5.16	5.16
80	3	89.10	88.90	4.2	2.11	3.05	-	4.0	4.50	-	5.49	5.49

Nominal Pipe Size		Outside Diameter		Nominal Wall Thickness								
DN	NPS	JIS	ANSI	Sch 60	Sch 80s	X-S	Sch 80	Sch 100	Sch 120	Sch 140	Sch 160	XX-S
6	1/8	10.50	10.29	2.20	2.41	2.41	2.41	-	-	-	3.15	4.83
8	1/4	13.80	13.72	2.40	3.02	3.02	3.02	-	-	-	3.68	6.05
10	3/8	17.30	17.14	2.80	3.20	3.20	3.20	-	-	-	4.01	6.40
15	1/2	21.70	21.34	3.20	3.73	3.73	3.73	-	-	-	4.78	7.47
20	3/4	27.20	26.67	3.40	3.91	3.91	3.91	-	-	-	5.56	7.82
25	1	34.00	33.40	3.90	4.55	4.55	4.55	-	-	-	6.35	9.09
32	1 1/4	42.70	42.16	4.50	4.85	4.85	4.85	-	-	-	6.35	9.70
40	1 1/2	48.60	48.26	4.50	5.08	5.08	5.08	-	-	-	7.14	10.16
50	2	60.50	60.32	4.90	5.54	5.54	5.54	-	-	-	8.74	11.07
65	2 1/2	76.30	73.02	6.00	7.01	7.01	7.01	-	-	-	9.52	14.02
80	3	89.10	88.90	6.60	7.62	7.62	7.62	-	-	-	11.12	15.24

**THREAD FITTINGS**

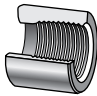
90° ELBOW  
**CL**  6

45° ELBOW  
**CLB**  6

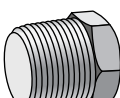
TEE  
**CT**  7

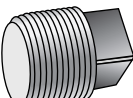
CROSS  
**CX**  7

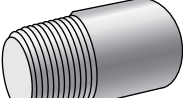
FULL COUPLING  
**CFC**  8

HALF COUPLING  
**CHC**  8

CAP  
**CA**  8

HEX HEAD PLUG  
**CHP**  9

SQUARE HEAD PLUG  
**CSP**  9

ROUND HEAD PLUG  
**CRP**  9

UNION  
**CU series**  14

**SOCKET WELD FITTINGS**

90° ELBOW  
**CLSW**  10

45° ELBOW  
**CLBSW**  10

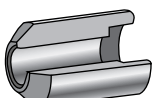
TEE  
**CTSW**  11

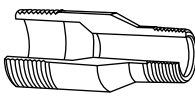
CROSS  
**CXSW**  11

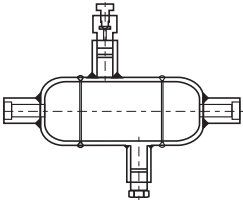
FULL COUPLING  
**CFCSW**  12

HALF COUPLING  
**CHCSW**  12

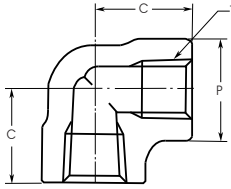
CAP  
**CASW**  13

BOSS  
**CBSW**  13

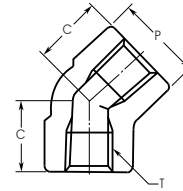
SWAGED NIPPLE  
 15

CONDENSATE POT  
**CP series**  16

## 90° ELBOW CL



## 45° ELBOW CLB



PART No	T(PT)	P	C
---------	-------	---	---

### 2000 lb

<b>C2L-02R</b>	1/4	26.5	25.4
<b>C2L-03R</b>	3/8	26.5	25.4
<b>C2L-04R</b>	1/2	34.0	28.5
<b>C2L-06R</b>	3/4	38.5	33.5
<b>C2L-08R</b>	1	46.5	38.1
<b>C2L-10R</b>	1 1/4	56.5	44.5
<b>C2L-12R</b>	1 1/2	63.5	50.8
<b>C2L-16R</b>	2	76.0	60.5

### 3000 lb

<b>C3L-02R</b>	1/4	26.5	25.4
<b>C3L-03R</b>	3/8	34.0	28.5
<b>C3L-04R</b>	1/2	38.5	33.5
<b>C3L-06R</b>	3/4	46.5	38.1
<b>C3L-08R</b>	1	56.5	44.5
<b>C3L-10R</b>	1 1/4	63.5	50.8
<b>C3L-12R</b>	1 1/2	76.0	60.5
<b>C3L-16R</b>	2	84.0	64.0

### 6000 lb

<b>C6L-03R</b>	3/8	38.5	33.5
<b>C6L-04R</b>	1/2	46.5	38.5
<b>C6L-06R</b>	3/4	56.5	44.5
<b>C6L-08R</b>	1	63.5	50.8
<b>C6L-10R</b>	1 1/4	76.0	60.5
<b>C6L-12R</b>	1 1/2	84.0	64.0
<b>C6L-16R</b>	2	110.0	83.0

PART No	T(PT)	P	C
---------	-------	---	---

### 2000 lb

<b>C2LB-02R</b>	1/4	26.5	19.1
<b>C2LB-03R</b>	3/8	26.5	19.1
<b>C2LB-04R</b>	1/2	34.0	26.0
<b>C2LB-06R</b>	3/4	38.5	28.6
<b>C2LB-08R</b>	1	46.5	30.0
<b>C2LB-10R</b>	1 1/4	56.5	33.3
<b>C2LB-12R</b>	1 1/2	63.5	42.0
<b>C2LB-16R</b>	2	76.0	46.0

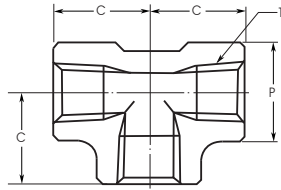
### 3000 lb

<b>C3LB-02R</b>	1/4	26.5	19.1
<b>C3LB-03R</b>	3/8	34.0	26.0
<b>C3LB-04R</b>	1/2	38.5	28.6
<b>C3LB-06R</b>	3/4	46.5	30.0
<b>C3LB-08R</b>	1	56.5	33.3
<b>C3LB-10R</b>	1 1/4	63.5	42.0
<b>C3LB-12R</b>	1 1/2	76.0	46.0
<b>C3LB-16R</b>	2	84.0	53.0

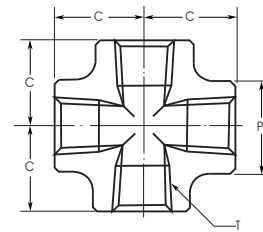
### 6000 lb

<b>C6LB-03R</b>	3/8	38.5	28.6
<b>C6LB-04R</b>	1/2	46.5	30.0
<b>C6LB-06R</b>	3/4	56.5	33.3
<b>C6LB-08R</b>	1	63.5	42.0
<b>C6LB-10R</b>	1 1/4	76.0	46.0
<b>C6LB-12R</b>	1 1/2	84.0	53.0
<b>C6LB-16R</b>	2	110.0	64.0

**TEE  
CT**



**CROSS  
CX**



PART No	T(PT)	P	C
---------	-------	---	---

**2000 lb**

<b>C2T-02R</b>	1/4	26.5	25.4
<b>C2T-03R</b>	3/8	26.5	25.4
<b>C2T-04R</b>	1/2	34.0	28.5
<b>C2T-06R</b>	3/4	38.5	33.5
<b>C2T-08R</b>	1	46.5	38.1
<b>C2T-10R</b>	1 1/4	56.5	44.5
<b>C2T-12R</b>	1 1/2	63.5	50.8
<b>C2T-16R</b>	2	76.0	60.5

**3000 lb**

<b>C3T-02R</b>	1/4	26.5	25.4
<b>C3T-03R</b>	3/8	34.0	28.5
<b>C3T-04R</b>	1/2	38.5	33.5
<b>C3T-06R</b>	3/4	46.5	38.1
<b>C3T-08R</b>	1	56.5	44.5
<b>C3T-10R</b>	1 1/4	63.5	50.8
<b>C3T-12R</b>	1 1/2	76.0	60.5
<b>C3T-16R</b>	2	84.0	64.0

**6000 lb**

<b>C6T-03R</b>	3/8	38.5	33.5
<b>C6T-04R</b>	1/2	46.5	38.1
<b>C6T-06R</b>	3/4	56.5	44.5
<b>C6T-08R</b>	1	63.5	50.8
<b>C6T-10R</b>	1 1/4	76.0	60.5
<b>C6T-12R</b>	1 1/2	84.0	64.0
<b>C6T-16R</b>	2	110.0	83.0

PART No	T(PT)	P	C
---------	-------	---	---

**2000 lb**

<b>C2X-02R</b>	1/4	26.5	25.4
<b>C2X-03R</b>	3/8	26.5	25.4
<b>C2X-04R</b>	1/2	34.0	28.5
<b>C2X-06R</b>	3/4	38.5	33.5
<b>C2X-08R</b>	1	46.5	38.1
<b>C2X-10R</b>	1 1/4	56.5	44.5
<b>C2X-12R</b>	1 1/2	63.5	50.8
<b>C2X-16R</b>	2	76.0	60.5

**3000 lb**

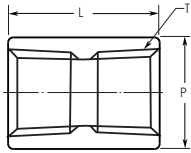
<b>C3X-02R</b>	1/4	26.5	25.4
<b>C3X-03R</b>	3/8	34.0	28.5
<b>C3X-04R</b>	1/2	38.5	33.5
<b>C3X-06R</b>	3/4	46.5	38.1
<b>C3X-08R</b>	1	56.5	44.5
<b>C3X-10R</b>	1 1/4	63.5	50.8
<b>C3X-12R</b>	1 1/2	76.0	60.5
<b>C3X-16R</b>	2	84.0	64.0

**6000 lb**

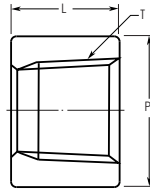
<b>C6X-03R</b>	3/8	38.5	33.5
<b>C6X-04R</b>	1/2	46.5	38.1
<b>C6X-06R</b>	3/4	56.5	44.5
<b>C6X-08R</b>	1	63.5	50.8
<b>C6X-10R</b>	1 1/4	76.0	60.5
<b>C6X-12R</b>	1 1/2	84.0	64.0
<b>C6X-16R</b>	2	110.0	83.0



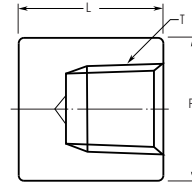
## FULL COUPLING CFC



## HALF COUPLING CHC



## CAP CA



PART No	T(PT)	P	L
<b>2000 lb</b>			
C2FC-02R	1/4	19.0	35.0
C2FC-03R	3/8	22.0	38.0
C2FC-04R	1/2	28.5	48.0
C2FC-06R	3/4	35.0	51.0
C2FC-08R	1	44.5	61.0
C2FC-10R	1 1/4	57.0	67.0
C2FC-12R	1 1/2	63.5	80.0
C2FC-16R	2	76.0	86.0

PART No	T(PT)	P	L
<b>2000 lb</b>			
C2HC-02R	1/4	19.0	17.5
C2HC-03R	3/8	22.0	19.0
C2HC-04R	1/2	28.5	24.0
C2HC-06R	3/4	35.0	25.5
C2HC-08R	1	44.5	30.5
C2HC-10R	1 1/4	57.0	33.5
C2HC-12R	1 1/2	63.5	40.0
C2HC-16R	2	76.0	43.0

PART No	T(PT)	P	L
<b>2000 lb</b>			
C2A-02R	1/4	19.0	25.0
C2A-03R	3/8	22.0	25.0
C2A-04R	1/2	28.5	32.0
C2A-06R	3/4	35.0	37.0
C2A-08R	1	44.5	41.0
C2A-10R	1 1/4	57.0	44.0
C2A-12R	1 1/2	63.5	44.0
C2A-16R	2	76.0	48.0

PART No	T(PT)	P	L
<b>3000 lb</b>			
C3FC-02R	1/4	19.0	35.1
C3FC-03R	3/8	22.0	38.1
C3FC-04R	1/2	28.5	48.0
C3FC-06R	3/4	35.0	51.0
C3FC-08R	1	44.5	61.0
C3FC-10R	1 1/4	57.0	67.0
C3FC-12R	1 1/2	63.5	80.0
C3FC-16R	2	76.0	86.0

PART No	T(PT)	P	L
<b>3000 lb</b>			
C3HC-02R	1/4	19.0	17.5
C3HC-03R	3/8	22.0	19.0
C3HC-04R	1/2	28.5	24.0
C3HC-06R	3/4	35.0	25.5
C3HC-08R	1	44.5	30.5
C3HC-10R	1 1/4	57.0	33.5
C3HC-12R	1 1/2	63.5	40.0
C3HC-16R	2	76.0	43.0

PART No	T(PT)	P	L
<b>3000 lb</b>			
C3A-02R	1/4	19.0	25.0
C3A-03R	3/8	22.0	25.0
C3A-04R	1/2	28.5	32.0
C3A-06R	3/4	35.0	37.0
C3A-08R	1	44.5	41.0
C3A-10R	1 1/4	57.0	44.0
C3A-12R	1 1/2	63.5	44.0
C3A-16R	2	76.0	48.0

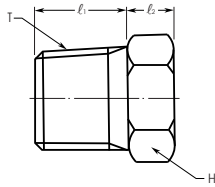
PART No	T(PT)	P	L
<b>6000 lb</b>			
C6FC-02R	1/4	25.4	35.0
C6FC-03R	3/8	31.8	38.0
C6FC-04R	1/2	38.1	48.0
C6FC-06R	3/4	44.5	51.0
C6FC-08R	1	57.0	61.0
C6FC-10R	1 1/4	63.5	67.0
C6FC-12R	1 1/2	76.0	80.0
C6FC-16R	2	92.0	86.0

PART No	T(PT)	P	L
<b>6000 lb</b>			
C6HC-02R	1/4	25.4	17.5
C6HC-03R	3/8	31.8	19.0
C6HC-04R	1/2	38.1	24.0
C6HC-06R	3/4	44.5	25.5
C6HC-08R	1	57.0	30.5
C6HC-10R	1 1/4	63.5	33.5
C6HC-12R	1 1/2	76.0	40.0
C6HC-16R	2	92.0	43.0

PART No	T(PT)	P	L
<b>6000 lb</b>			
C6A-02R	1/4	25.4	27.0
C6A-03R	3/8	31.8	27.0
C6A-04R	1/2	38.1	33.0
C6A-06R	3/4	44.5	38.0
C6A-08R	1	57.0	43.0
C6A-10R	1 1/4	63.5	46.0
C6A-12R	1 1/2	76.0	48.0
C6A-16R	2	92.0	51.0

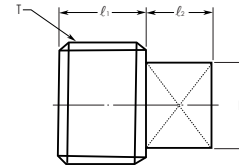


HEX HEAD PLUG  
CHP



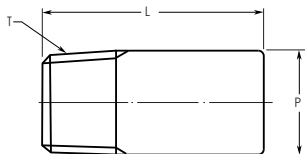
PART No	T(PT)	l <sub>1</sub>	l <sub>2</sub>	H
<b>6000 lb</b>				
C6HP-01R	1/8	11.0	6.3	11.0
C6HP-02R	1/4	13.0	6.3	16.0
C6HP-03R	3/8	14.0	8.0	18.0
C6HP-04R	1/2	18.0	8.0	22.0
C6HP-06R	3/4	19.0	10.0	27.0
C6HP-08R	1	21.0	10.0	35.0
C6HP-10R	1 1/4	22.0	14.0	44.0
C6HP-12R	1 1/2	24.0	16.0	51.0
C6HP-16R	2	25.0	18.0	63.5

SQUARE HEAD PLUG  
CSP



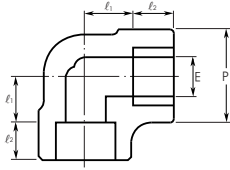
PART No	T(PT)	l <sub>1</sub>	l <sub>2</sub>	H
<b>6000 lb</b>				
C6SP-01R	1/8	9.9	6.6	7.0
C6SP-02R	1/4	13.0	6.6	9.5
C6SP-03R	3/8	13.0	7.9	11.0
C6SP-04R	1/2	15.0	9.9	14.5
C6SP-06R	3/4	16.0	11.0	16.0
C6SP-08R	1	20.1	13.0	21.0
C6SP-10R	1 1/4	21.1	15.0	24.0
C6SP-12R	1 1/2	21.1	16.0	28.5
C6SP-16R	2	23.1	18.0	33.5

ROUND HEAD PLUG  
CRP



PART No	T(PT)	P	L
<b>6000 lb</b>			
C6RP-01R	1/4	10.3	35.0
C6RP-02R	1/4	13.5	41.3
C6RP-03R	3/8	17.5	41.3
C6RP-04R	1/2	21.4	44.5
C6RP-06R	3/4	27.0	44.5
C6RP-08R	1	33.4	50.8
C6RP-10R	1 1/4	42.9	50.8
C6RP-12R	1 1/2	48.4	50.8
C6RP-16R	2	60.3	63.5

## 90° ELBOW CL-SW



PART No	SW	P	E	$l_1$	$l_2$
---------	----	---	---	-------	-------

### 3000 lb

<b>C3L-02SW</b>	1/4	26.5	9.4	11.1	10.0
<b>C3L-03SW</b>	3/8	26.5	12.7	13.4	10.0
<b>C3L-04SW</b>	1/2	34.0	16.1	16.0	13.0
<b>C3L-06SW</b>	3/4	38.5	21.2	20.0	14.0
<b>C3L-08SW</b>	1	46.5	27.0	23.0	15.0
<b>C3L-10SW</b>	1 1/4	56.5	35.4	28.0	17.0
<b>C3L-12SW</b>	1 1/2	63.5	41.2	33.0	18.0
<b>C3L-16SW</b>	2	76.0	52.7	39.0	22.0

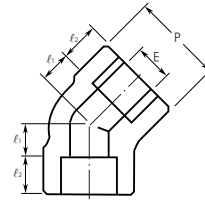
### 6000 lb

<b>C6L-04SW</b>	1/2	38.5	12.0	20.0	16.0
<b>C6L-06SW</b>	3/4	46.5	15.8	23.0	16.0
<b>C6L-08SW</b>	1	56.5	21.0	28.0	18.0
<b>C6L-10SW</b>	1 1/4	63.5	29.7	33.0	20.0
<b>C6L-12SW</b>	1 1/2	76.0	34.2	40.0	22.0
<b>C6L-16SW</b>	2	84.0	43.1	42.0	24.0

### 9000 lb

<b>C9L-04SW</b>	1/2	46.5	6.4	23.0	16.0
<b>C9L-06SW</b>	3/4	56.5	11.0	28.0	16.0
<b>C9L-08SW</b>	1	63.5	15.2	33.0	18.0
<b>C9L-10SW</b>	1 1/4	76.0	22.7	40.0	20.0
<b>C9L-12SW</b>	1 1/2	84.0	27.9	42.0	22.0
<b>C9L-16SW</b>	2	110.0	38.1	54.0	24.0

## 45° ELBOW CLB-SW



PART No	SW	P	E	$l_1$	$l_2$
---------	----	---	---	-------	-------

### 3000 lb

<b>C3LB-02SW</b>	1/4	26.5	9.4	7.9	10.0
<b>C3LB-03SW</b>	3/8	26.5	12.7	7.9	10.0
<b>C3LB-04SW</b>	1/2	34.0	16.1	13.0	13.0
<b>C3LB-06SW</b>	3/4	38.5	21.2	13.0	14.0
<b>C3LB-08SW</b>	1	46.5	27.0	14.0	15.0
<b>C3LB-10SW</b>	1 1/4	56.5	35.4	18.0	17.0
<b>C3LB-12SW</b>	1 1/2	63.5	41.2	22.0	18.0
<b>C3LB-16SW</b>	2	76.0	52.7	24.0	22.0

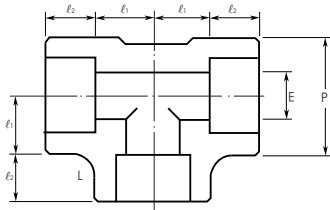
### 6000 lb

<b>C6LB-04SW</b>	1/2	38.5	12.0	13.0	16.0
<b>C6LB-06SW</b>	3/4	46.5	15.8	14.0	16.0
<b>C6LB-08SW</b>	1	56.5	21.0	22.0	18.0
<b>C6LB-10SW</b>	1 1/4	63.5	29.7	22.0	20.0
<b>C6LB-12SW</b>	1 1/2	76.0	34.2	24.0	22.0
<b>C6LB-16SW</b>	2	84.0	43.1	29.0	24.0

### 9000 lb

<b>C9LB-04SW</b>	1/2	46.5	6.4	14.0	16.0
<b>C9LB-06SW</b>	3/4	56.5	11.0	22.0	16.0
<b>C9LB-08SW</b>	1	63.5	15.2	22.0	18.0
<b>C9LB-10SW</b>	1 1/4	76.0	22.7	24.0	20.0
<b>C9LB-12SW</b>	1 1/2	84.0	27.9	29.0	22.0
<b>C9LB-16SW</b>	2	110.0	38.1	34.0	24.0

## TEE CT-SW



PART No	SW	P	E	$l_1$	$l_2$
---------	----	---	---	-------	-------

### 3000 lb

<b>C3T-02SW</b>	1/4	26.5	9.4	11.1	10.0
<b>C3T-03SW</b>	3/8	26.5	12.7	13.4	10.0
<b>C3T-04SW</b>	1/2	34.0	16.1	16.0	13.0
<b>C3T-06SW</b>	3/4	38.5	21.2	20.0	14.0
<b>C3T-08SW</b>	1	46.5	27.0	23.0	15.0
<b>C3T-10SW</b>	1 1/4	56.5	35.4	28.0	17.0
<b>C3T-12SW</b>	1 1/2	63.5	41.2	33.0	18.0
<b>C3T-16SW</b>	2	76.0	52.7	39.0	22.0

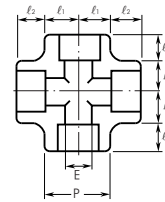
### 6000 lb

<b>C6T-04SW</b>	1/2	38.5	12.0	20.0	16.0
<b>C6T-06SW</b>	3/4	46.5	15.8	23.0	16.0
<b>C6T-08SW</b>	1	56.5	21.0	28.0	18.0
<b>C6T-10SW</b>	1 1/4	63.5	29.7	33.0	20.0
<b>C6T-12SW</b>	1 1/2	76.0	34.2	40.0	22.0
<b>C6T-16SW</b>	2	84.0	43.1	42.0	24.0

### 9000 lb

<b>C9T-04SW</b>	1/2	46.5	6.4	23.0	16.0
<b>C9T-06SW</b>	3/4	56.5	11.0	28.0	16.0
<b>C9T-08SW</b>	1	63.5	15.2	33.0	18.0
<b>C9T-10SW</b>	1 1/4	76.0	22.7	40.0	20.0
<b>C9T-12SW</b>	1 1/2	84.0	27.9	42.0	22.0
<b>C9T-16SW</b>	2	110.0	38.1	54.0	24.0

## CROSS CX-SW



PART No	SW	P	E	$l_1$	$l_2$
---------	----	---	---	-------	-------

### 3000 lb

<b>C3X-02SW</b>	1/4	26.5	9.4	11.1	10.0
<b>C3X-03SW</b>	3/8	26.5	12.7	13.4	10.0
<b>C3X-04SW</b>	1/2	34.0	16.1	16.0	13.0
<b>C3X-06SW</b>	3/4	38.5	21.2	20.0	14.0
<b>C3X-08SW</b>	1	46.5	27.0	23.0	15.0
<b>C3X-10SW</b>	1 1/4	56.5	35.4	28.0	17.0
<b>C3X-12SW</b>	1 1/2	63.5	41.2	33.0	18.0
<b>C3X-16SW</b>	2	76.0	52.7	39.0	22.0

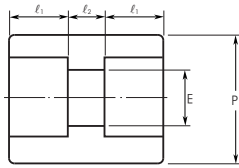
### 6000 lb

<b>C6X-04SW</b>	1/2	38.5	12.0	20.0	16.0
<b>C6X-06SW</b>	3/4	46.5	15.8	23.0	16.0
<b>C6X-08SW</b>	1	56.5	21.0	28.0	18.0
<b>C6X-10SW</b>	1 1/4	63.5	29.7	33.0	20.0
<b>C6X-12SW</b>	1 1/2	76.0	34.2	39.0	22.0
<b>C6X-16SW</b>	2	84.0	43.1	42.0	24.0

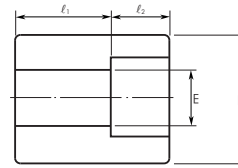
### 9000 lb

<b>C9X-04SW</b>	1/2	46.5	6.4	23.0	16.0
<b>C9X-06SW</b>	3/4	56.5	11.0	28.0	16.0
<b>C9X-08SW</b>	1	63.5	15.2	33.0	18.0
<b>C9X-10SW</b>	1 1/4	76.0	22.7	40.0	20.0
<b>C9X-12SW</b>	1 1/2	84.0	27.9	42.0	22.0
<b>C9X-16SW</b>	2	110.0	38.1	54.0	24.0

## FULL COUPLING CFC-SW



## HALF COUPLING CHC-SW



PART No	SW	P	E	$l_1$	$l_2$
---------	----	---	---	-------	-------

### 3000 lb

<b>C3FC-02SW</b>	1/4	21.0	9.4	10.0	6.4
<b>C3FC-03SW</b>	3/8	25.0	12.7	10.0	6.4
<b>C3FC-04SW</b>	1/2	31.0	16.1	10.0	9.6
<b>C3FC-06SW</b>	3/4	36.3	21.2	13.0	9.6
<b>C3FC-08SW</b>	1	44.5	27.0	13.0	12.7
<b>C3FC-10SW</b>	1 1/4	54.0	35.4	13.0	12.7
<b>C3FC-12SW</b>	1 1/2	60.3	41.2	13.0	12.7
<b>C3FC-16SW</b>	2	73.5	52.7	16.0	19.1

PART No	SW	P	E	$l_1$	$l_2$
---------	----	---	---	-------	-------

<b>C3HC-02SW</b>	1/4	21.0	9.4	15.7	10.0
<b>C3HC-03SW</b>	3/8	25.0	12.7	17.5	10.0
<b>C3HC-04SW</b>	1/2	31.0	16.1	22.4	10.0
<b>C3HC-06SW</b>	3/4	36.3	21.2	23.9	13.0
<b>C3HC-08SW</b>	1	44.5	27.0	28.4	13.0
<b>C3HC-10SW</b>	1 1/4	54.0	35.4	30.2	13.0
<b>C3HC-12SW</b>	1 1/2	60.3	41.2	31.8	13.0
<b>C3HC-16SW</b>	2	73.5	52.7	41.1	16.0

### 6000 lb

<b>C6FC-04SW</b>	1/2	32.6	12.0	10.0	9.6
<b>C6FC-06SW</b>	3/4	40.0	15.8	13.0	9.6
<b>C6FC-08SW</b>	1	48.5	21.0	13.0	12.7
<b>C6FC-10SW</b>	1 1/4	57.2	29.7	13.0	12.7
<b>C6FC-12SW</b>	1 1/2	64.7	34.2	13.0	12.7
<b>C6FC-16SW</b>	2	80.3	43.1	16.0	19.1

### 6000 lb

<b>C6HC-04SW</b>	1/2	32.6	12.0	22.4	10.0
<b>C6HC-06SW</b>	3/4	40.0	15.8	23.9	13.0
<b>C6HC-08SW</b>	1	48.5	21.0	28.4	13.0
<b>C6HC-10SW</b>	1 1/4	57.2	29.7	30.2	13.0
<b>C6HC-12SW</b>	1 1/2	64.7	34.2	31.8	13.0
<b>C6HC-16SW</b>	2	80.3	43.1	41.1	16.0

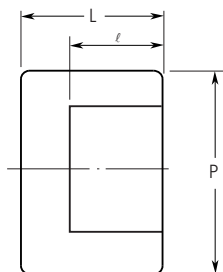
### 9000 lb

<b>C9FC-04SW</b>	1/2	40.4	6.4	10.0	9.6
<b>C9FC-06SW</b>	3/4	45.5	11.0	13.0	9.6
<b>C9FC-08SW</b>	1	55.0	15.2	13.0	12.7
<b>C9FC-10SW</b>	1 1/4	66.5	22.7	13.0	12.7
<b>C9FC-12SW</b>	1 1/2	73.0	27.9	13.0	12.7
<b>C9FC-16SW</b>	2	88.0	38.1	16.0	19.1

### 9000 lb

<b>C9HC-04SW</b>	1/2	40.4	6.4	22.4	10.0
<b>C9HC-06SW</b>	3/4	45.5	11.0	23.9	13.0
<b>C9HC-08SW</b>	1	55.0	15.2	28.4	13.0
<b>C9HC-10SW</b>	1 1/4	66.5	22.7	30.2	13.0
<b>C9HC-12SW</b>	1 1/2	73.0	27.9	31.8	13.0
<b>C9HC-16SW</b>	2	88.0	38.1	41.1	16.0

## CAP CA-SW



PART No	SW	P	l	L
---------	----	---	---	---

### 3000 lb

<b>C3A-02SW</b>	1/4	21.0	10.0	20.0
<b>C3A-03SW</b>	3/8	25.0	10.0	20.0
<b>C3A-04SW</b>	1/2	31.0	10.0	20.0
<b>C3A-06SW</b>	3/4	36.3	13.0	25.0
<b>C3A-08SW</b>	1	44.5	13.0	27.0
<b>C3A-10SW</b>	1 1/4	54.0	13.0	30.0
<b>C3A-12SW</b>	1 1/2	60.3	13.0	30.0
<b>C3A-16SW</b>	2	73.5	16.0	36.0

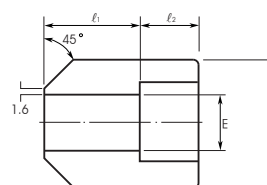
### 6000 lb

<b>C6A-04SW</b>	1/2	32.6	10.0	26.0
<b>C6A-06SW</b>	3/4	40.0	13.0	27.0
<b>C6A-08SW</b>	1	48.5	13.0	30.0
<b>C6A-10SW</b>	1 1/4	57.2	13.0	35.0
<b>C6A-12SW</b>	1 1/2	64.7	13.0	36.0
<b>C6A-16SW</b>	2	80.3	16.0	39.0

### 9000 lb

<b>C9A-04SW</b>	1/2	40.4	10.0	30.0
<b>C9A-06SW</b>	3/4	45.5	13.0	30.0
<b>C9A-08SW</b>	1	55.0	13.0	33.0
<b>C9A-10SW</b>	1 1/4	66.5	13.0	40.0
<b>C9A-12SW</b>	1 1/2	73.0	13.0	40.0
<b>C9A-16SW</b>	2	88.0	16.0	43.0

## BOSS CB-SW



PART No	SW	P	E	l <sub>1</sub>	l <sub>2</sub>
---------	----	---	---	----------------	----------------

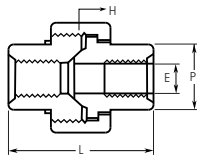
### 3000 lb

<b>C3B-02SW</b>	1/4	21.0	9.4	15.7	10.0
<b>C3B-03SW</b>	3/8	25.0	12.7	17.5	10.0
<b>C3B-04SW</b>	1/2	31.0	16.1	22.4	10.0
<b>C3B-06SW</b>	3/4	36.3	21.2	23.9	13.0
<b>C3B-08SW</b>	1	44.5	27.0	28.4	13.0
<b>C3B-10SW</b>	1 1/4	54.0	35.4	30.2	13.0
<b>C3B-12SW</b>	1 1/2	60.3	41.2	31.8	13.0
<b>C3B-16SW</b>	2	73.5	52.7	41.1	16.0

### 6000 lb

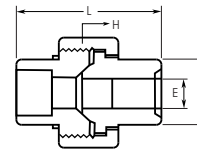
<b>C6B-04SW</b>	1/2	32.6	12.0	24.4	10.0
<b>C6B-06SW</b>	3/4	40.0	15.8	23.9	13.0
<b>C6B-08SW</b>	1	48.5	21.0	28.4	13.0
<b>C6B-10SW</b>	1 1/4	57.2	29.7	30.2	13.0
<b>C6B-12SW</b>	1 1/2	64.7	34.2	31.8	13.0
<b>C6B-16SW</b>	2	80.3	43.1	41.1	16.0

**THREAD UNION**

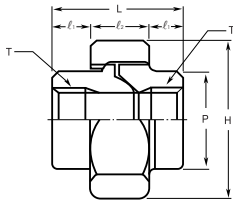


PART No	T(NPT)	P	E	L	H
<b>3000 lb</b>					
C3U-01N	1/8	14.7	6.43	41.4	16.0
C3U-02N	1/4	19.0	9.45	41.4	16.0
C3U-03N	3/8	22.9	13.51	46.0	14.0
C3U-04N	1/2	27.7	17.07	49.0	14.0
C3U-06N	3/4	33.5	21.39	56.9	11.0
C3U-08N	1	41.4	27.74	62.0	11.0
C3U-10N	1 1/4	50.5	35.36	71.1	11.0
C3U-12N	1 1/2	57.2	41.20	76.4	10.0
C3U-16N	2	70.1	52.12	86.1	10.0

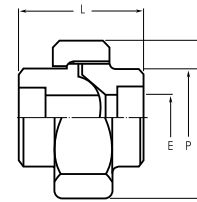
**SOCKET WELD UNION**



PART No	SW	P	E	L	H
<b>3000 lb</b>					
C3U-01SW	1/8	21.8	6.43	41.1	16.0
C3U-02SW	1/4	21.8	9.45	41.4	16.0
C3U-03SW	3/8	25.9	13.51	46.0	14.0
C3U-04SW	1/2	31.2	17.07	49.0	14.0
C3U-06SW	3/4	37.1	21.39	56.9	11.0
C3U-08SW	1	45.5	27.74	62.0	11.0
C3U-10SW	1 1/4	54.9	35.36	71.1	11.0
C3U-12SW	1 1/2	61.5	41.20	76.5	10.0
C3U-16SW	2	75.2	52.12	86.1	10.0

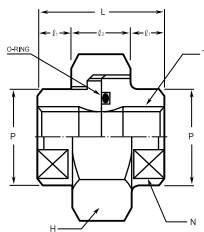


PART No	T(PT)	P	l <sub>1</sub>	l <sub>2</sub>	L	H
<b>6000 lb</b>						
C6U-02R	1/4	25.4	13.5	19.0	46.0	40 HEX
C6U-03R	3/8	32.0	15.0	21.0	51.0	46 HEX
C6U-04R	1/2	40.0	17.0	23.0	57.0	56 HEX
C6U-06R	3/4	44.5	19.5	25.0	64.0	65 HEX
C6U-08R	1	51.0	22.5	27.0	72.0	74 OCT
C6U-10R	1 1/4	57.2	24.0	30.0	78.0	83 OCT
C6U-12R	1 1/2	71.5	26.0	36.0	88.0	103 OCT
C6U-16R	2	90.0	34.0	42.0	110.0	124 OCT



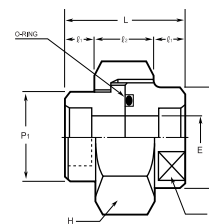
PART No	SW	P	E	L	H
<b>6000 lb</b>					
C6U-04SW	1/2	40.0	12.0	57.0	56 HEX
C6U-06SW	3/4	44.5	15.8	64.0	65 HEX
C6U-08SW	1	51.0	21.0	72.0	74 OCT
C6U-10SW	1 1/4	57.2	29.7	78.0	83 OCT
C6U-12SW	1 1/2	71.5	34.2	88.0	103 OCT
C6U-16SW	2	90.0	43.1	110.0	124 OCT

**THREAD UNION O-ring type**



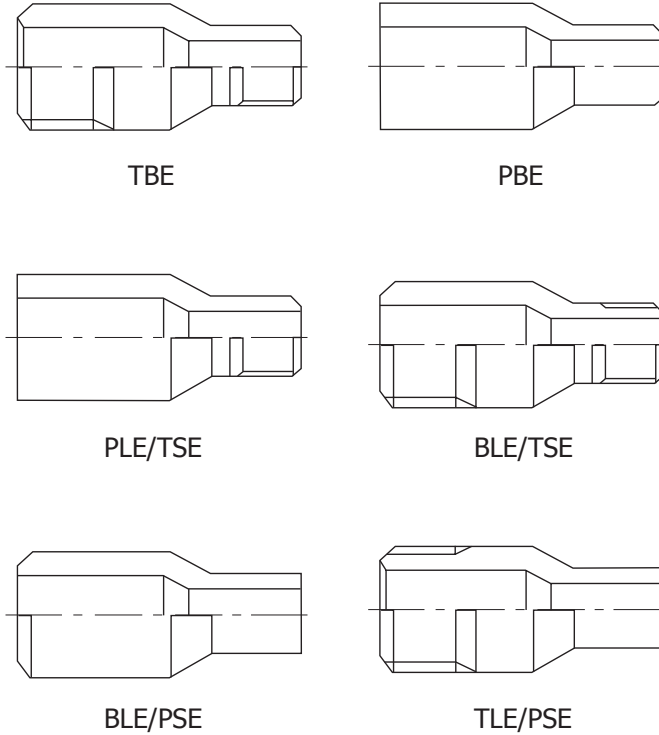
PART No	T(PT)	P	l <sub>1</sub>	l <sub>2</sub>	L	H	N	O-ring
<b>3000 lb</b>								
C3UO-02R	1/4	22.0	10.0	18.0	38.0	35 HEX	21.0	P18
C3UO-03R	3/8	27.0	10.0	18.0	38.0	41 HEX	26.0	P20
C3UO-04R	1/2	32.0	12.0	20.0	44.0	46 HEX	32.0	G25
C3UO-06R	3/4	38.0	12.0	26.0	50.0	54 HEX	38.0	G30
C3UO-08R	1	47.0	15.0	26.0	56.0	63 HEX	46.0	G35
C3UO-10R	1 1/4	56.0	15.0	30.0	60.0	77 HEX	54.0	G45
C3UO-12R	1 1/2	63.0	18.0	36.0	72.0	80 OCT	63.0	G50
C3UO-16R	2	76.0	18.0	36.0	72.0	95 OCT	77.0	G65

**SOCKET WELD UNION O-ring type**



PART No	SW	P1	P2	E	l <sub>1</sub>	l <sub>2</sub>	L	N	H	O-ring
<b>3000 lb</b>										
C3UO-02SW	1/4	22.0	24.0	10.0	10.0	18.0	38.0	21.0	35 HEX	P18
C3UO-03SW	3/8	27.0	30.0	12.0	10.0	18.0	38.0	26.0	41 HEX	P20
C3UO-04SW	1/2	32.0	35.0	16.0	12.0	20.0	44.0	32.0	46 HEX	G25
C3UO-06SW	3/4	38.0	42.0	20.0	12.0	26.0	50.0	38.0	54 HEX	G30
C3UO-08SW	1	47.0	52.0	25.0	15.0	26.0	56.0	46.0	63 HEX	G35
C3UO-10SW	1 1/4	56.0	60.0	32.0	15.0	30.0	60.0	54.0	77 HEX	G45
C3UO-12SW	1 1/2	63.0	68.0	38.0	18.0	36.0	72.0	63.0	80 OCT	G50
C3UO-16SW	2	76.0	82.0	48.0	18.0	36.0	72.0	77.0	95 OCT	G65

**SWAGED NIPPLE**



Large End Size	Small End Size	Length (mm)
1/2	3/8 - 1/8	70.0
3/4	1/2 - 1/8	76.0
1	3/4 - 1/8	89.0
1 1/4	1 - 1/8	102.0
1 1/2	1 1/4 - 1/8	114.0
2	1 1/2 - 1/8	165.0

Swaged Nipples are made out of forging or pipe.

- TBE : Threaded Both End
- PBE : Plain Both End
- PLE / TSE : Plain Large End - Threaded Small End
- BLE / TSE : Beveled Large End - Threaded Small End
- BLE / PSE : Beveled Large End - Plain Small End
- TLE / PSE : Threaded Large End - Plain Small End



## DK "CP" series HYDRAULIC CONDENSATE POT

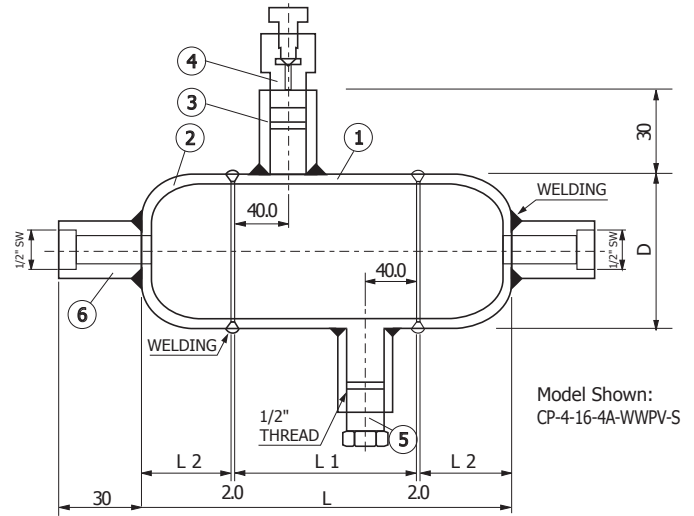
### "CP" series Condensate Pot Part Listing

1	PIPE
2	CAP
3	HALF COUPLING (CHC)
4	VENT PLUG (CVP)
5	HEX HEAD PLUG (CHP)
6	SOCKET WELDING HALF COUPLING (CHCSW)

### Table of Dimensions Unit: mm

PIPE	D	L	L1*	L2
3"	88.9	214	110	50
4"	114.3	360	229	63.5

\* L1 length is adjustable according to client request to fit the system design.



## Ordering Information

An example of ordering number: **CP -4 -16 -4A -WWPV -S**

DK CP series condensate pot ordering No.: **CP**

### Condensate Pot Designator

Pipe Size	IDENTIFIER
3"	3
4"	4

### Rating Designator

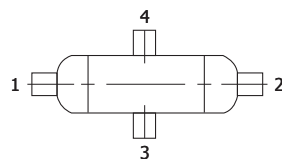
Pipe Wall	IDENTIFIER
SCH40	4
SCH 80	8
SCH 160	16
SCH XXS	X

### POT CONFIGURATION DESIGNATOR

Configuration	IDENTIFIER
	2A
	2B
	3A
	3B
	3C
	4A

### POT END CONNECTION DESIGNATOR

End connectors are described by first the run (1 and 2) and next the branch (3 and 4).



End Connection	IDENTIFIER
1/2" NPT	N
1/2" PT	R
1/2" SW	W
1/2" DK-LOK	D
Vent Plug	V
Hex Head Plug	P

Note: End connection fittings are selected as per the pipe wall rating.

### MATERIAL DESIGNATOR

MATERIAL	IDENTIFIER
ASTM A312-TP304	4
ASTM A312-TP304L	4L
ASTM A312-TP316	S
ASTM A312-TP316L	L
ASTM A335-P11	C11
ASTM A335-P22	C22
ASTM A106-B	C6B