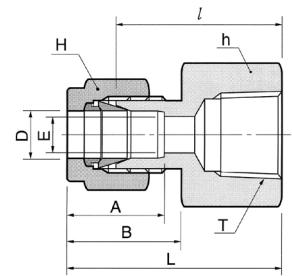
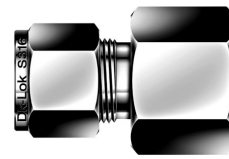


Złącze proste z gwintem wewnętrznym R

Wartości ciśnień dla złączki DCF-R
znajdują się w tabeli nr 21 na stronie 13



Połączenie rury stalowej z zewnętrznym gwintem stożkowym ISO

DCF-...R

Kod	Średnica zewn. rury		T R (BSPT)	E min	Odległość powierzchni płaskich				A	B	l	L
	D in	mm			h in	mm	H					
							in	mm				
DCF-2-2R	1/8	3.17	1/8	2.28	9/16	14.28	7/16	11.11	12.70	15.24	22.09	28.70
DCF-4-2R	1/4	6.35	1/8	4.82	9/16	14.28	9/16	14.28	15.24	17.78	23.87	31.24
DCF-4-4R	1/4	6.35	1/4	4.82	3/4	19.05	9/16	14.28	15.24	17.78	28.44	35.81
DCF-4-6R	1/4	6.35	3/8	4.82	7/8	22.22	9/16	14.28	15.24	17.78	30.22	37.59
DCF-4-8R	1/4	6.35	1/2	4.82	1-1/16	26.98	9/16	14.28	15.24	17.78	35.05	42.41
DCF-6-4R	3/8	9.52	1/4	7.11	3/4	19.05	11/16	17.46	16.76	19.30	30.22	37.59
DCF-6-6R	3/8	9.52	3/8	7.11	7/8	22.22	11/16	17.46	16.76	19.30	31.75	39.11
DCF-6-8R	3/8	9.52	1/2	7.11	1-1/16	26.98	11/16	17.46	16.76	19.30	36.57	43.94
DCF-8-2R	1/2	12.70	1/8	10.41	13/16	20.64	7/8	22.22	22.86	21.84	25.40	35.56
DCF-8-4R	1/2	12.70	1/4	10.41	1-3/16	20.64	7/8	22.22	22.86	21.84	30.22	40.38
DCF-8-6R	1/2	12.70	3/8	10.41	7/8	22.22	7/8	22.22	22.86	21.84	31.75	41.91
DCF-8-8R	1/2	12.70	1/2	10.41	1-1/16	26.98	7/8	22.22	22.86	21.84	36.57	46.73
DCF-8-12R	1/2	12.70	3/4	10.41	1-5/16	33.33	7/8	22.22	22.86	21.84	38.10	48.26
DCF-10-6R	5/8	15.87	3/8	12.70	15/16	23.81	1	25.40	24.38	21.84	31.75	41.91
DCF-10-8R	5/8	15.87	1/2	12.70	1-1/16	26.98	1	25.40	24.38	21.84	36.57	46.73
DCF-10-12R	5/8	15.87	3/4	12.70	1-5/16	33.33	1	25.40	24.38	21.84	38.10	48.26
DCF-12-8R	3/4	19.05	1/2	15.74	1-1/16	26.98	1-1/8	28.58	24.38	21.84	36.57	46.73
DCF-12-12R	3/4	19.05	3/4	15.74	1-5/16	33.33	1-1/8	28.58	24.38	21.84	38.10	48.26
DCF-16-12R	1	25.40	3/4	22.35	1-3/8	34.92	1-1/2	38.10	31.24	26.41	41.14	53.34
DCF-16-16R	1	25.40	1	22.35	1-5/8	41.27	1-1/2	38.10	31.24	26.41	50.03	62.23
DCF-20-16R	1-1/4	31.75	1	27.68	1-3/4	44.45	1-7/8	47.63	41.14	38.86	52.57	74.67
DCF-20-20R	1-1/4	31.75	1-1/4	27.68	2-1/8	53.98	1-7/8	47.63	41.14	38.86	52.57	74.67
DCF-24-24R	1-1/2	38.10	1-1/2	34.03	2-3/8	60.33	2-1/4	57.15	50.03	45.21	56.13	83.81

Połączenie rury metrycznej z zewnętrznym gwintem stożkowym ISO

DCF-...M-...R

Kod	Śr. zewn. rury D	T R (BSPT)	E min	Odl. pow. płaskich		A	B	l	L
				h	H				
DCF-3M-2R	3	1/8	2.4	14	12	12.9	15.3	22.1	28.7
DCF-3M-4R	3	1/4	2.4	19	12	12.9	15.3	26.9	33.5
DCF-4M-2R	4	1/8	2.4	14	12	13.7	16.1	23.1	29.7
DCF-6M-2R	6	1/8	4.8	14	14	15.3	17.7	23.9	31.3
DCF-6M-4R	6	1/4	4.8	19	14	15.3	17.7	28.4	35.8
DCF-6M-6R	6	3/8	4.8	22	14	15.3	17.7	29.5	36.9
DCF-6M-8R	6	1/2	4.8	27	14	15.3	17.7	35.1	42.5
DCF-8M-2R	8	1/8	6.4	15	16	16.2	18.6	24.6	32.1
DCF-8M-4R	8	1/4	6.4	19	16	16.2	18.6	29.5	37.0
DCF-8M-6R	8	3/8	6.4	22	16	16.2	18.6	30.2	37.7
DCF-8M-8R	8	1/2	6.4	27	16	16.2	18.6	35.8	43.3
DCF-10M-2R	10	1/8	7.9	18	19	17.2	19.5	25.4	33.0
DCF-10M-4R	10	1/4	7.9	19	19	17.2	19.5	30.2	37.8
DCF-10M-6R	10	3/8	7.9	22	19	17.2	19.5	31.0	38.6
DCF-10M-8R	10	1/2	7.9	27	19	17.2	19.5	36.6	44.2
DCF-12M-2R	12	1/8	8.3	22	22	22.8	22.0	28.4	38.5
DCF-12M-4R	12	1/4	9.5	22	22	22.8	22.0	30.2	40.3
DCF-12M-6R	12	3/8	9.5	22	22	22.8	22.0	31.0	41.1
DCF-12M-8R	12	1/2	9.5	27	22	22.8	22.0	36.6	46.7
DCF-12M-12R	12	3/4	9.5	35	22	22.8	22.0	38.9	49.0
DCF-15M-8R	15	1/2	11.9	27	25	24.4	22.0	36.6	46.7
DCF-16M-8R	16	1/2	12.7	27	25	24.4	22.0	36.8	46.9
DCF-20M-8R	20	1/2	15.9	30	32	26.0	22.0	37.8	47.9
DCF-20M-12R	20	3/4	15.9	35	32	26.0	22.0	39.6	49.7
DCF-22M-8R	22	1/2	18.3	30	32	26.0	22.0	38.0	48.1
DCF-22M-12R	22	3/4	18.3	35	32	26.0	22.0	39.6	49.7
DCF-22M-16R	22	1	18.3	41	32	26.0	22.0	47.8	57.9
DCF-25M-8R	25	1/2	21.8	35	38	31.3	26.5	41.1	53.4
DCF-25M-12R	25	3/4	21.8	35	38	31.3	26.5	41.1	53.4
DCF-25M-16R	25	1	21.8	41	38	31.3	26.5	50.0	62.3