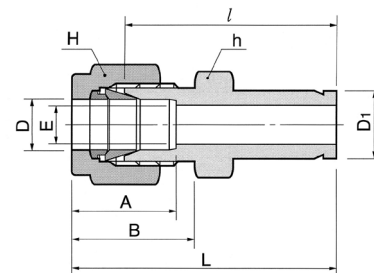


Złącze proste redukcyjne z adaptorem

Wartości ciśnień dla złączki DR
znajdują się w tabeli nr 22 na stronie 14



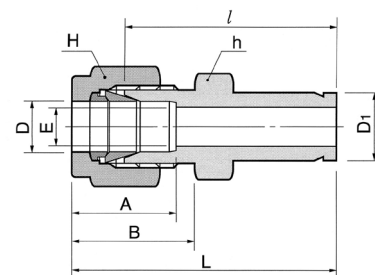
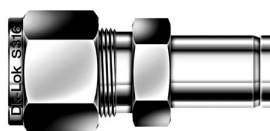
Połączenie rury stalowej z stalowym portem Dk-Lok

DR-...-...

Kod	Średnica zewnętrzna rury				E min	Odległość powierzchni płaskich				A	B	l	L ₁
	D		D ₁			h		H					
	in	mm	in	mm		in	mm	in	mm				
DR-1-2	1/16	1.59	1/8	3.17	1.27	5/16	7.93	5/16	7.93	8.63	10.92	25.40	29.21
DR-1-4	1/16	1.59	1/4	6.35	1.27	5/16	7.93	5/16	7.93	8.63	10.92	27.68	31.49
DR-2-1	1/8	3.17	1/16	1.59	1.76	7/16	11.11	7/16	11.11	12.70	15.24	22.35	28.95
DR-2-2	1/8	3.17	1/8	3.17	2.03	7/16	11.11	7/16	11.11	12.70	15.24	26.92	33.52
DR-2-3	1/8	3.17	3/16	4.76	2.28	7/16	11.11	7/16	11.11	12.70	15.24	27.68	34.29
DR-2-4	1/8	3.17	1/4	6.35	2.28	7/16	11.11	7/16	11.11	12.70	15.24	29.46	36.06
DR-2-6	1/8	3.17	3/8	9.52	2.28	7/16	11.11	7/16	11.11	12.70	15.24	30.98	37.59
DR-2-8	1/8	3.17	1/2	12.70	2.28	9/16	14.28	7/16	11.11	12.70	15.24	37.59	44.19
DR-3-2	3/16	4.76	1/8	3.17	2.03	7/16	11.11	1/2	12.70	13.71	16.00	28.19	34.79
DR-3-4	3/16	4.76	1/4	6.35	3.04	7/16	11.11	1/2	12.70	13.71	16.00	30.48	37.08
DR-4-2	1/4	6.35	1/8	3.17	2.03	1/2	12.70	9/16	14.28	15.24	17.78	29.46	36.83
DR-4-3	1/4	6.35	3/16	4.76	3.04	1/2	12.70	9/16	14.28	15.24	17.78	30.22	37.59
DR-4-4	1/4	6.35	1/4	6.35	4.82	1/2	12.70	9/16	14.28	15.24	17.78	31.75	39.11
DR-4-5	1/4	6.35	5/16	7.93	4.82	1/2	12.70	9/16	14.28	15.24	17.78	32.51	39.87
DR-4-6	1/4	6.35	3/8	9.52	4.82	1/2	12.70	9/16	14.28	15.24	17.78	33.27	40.64
DR-4-8	1/4	6.35	1/2	12.70	4.82	9/16	14.28	9/16	14.28	15.24	17.78	38.86	46.22
DR-4-10	1/4	6.35	5/8	15.87	4.82	11/16	17.46	9/16	14.28	15.24	17.78	40.64	48.00
DR-4-12	1/4	6.35	3/4	19.05	4.82	13/16	20.64	9/16	14.28	15.24	17.78	40.38	47.75
DR-5-6	5/16	7.93	3/8	9.52	6.35	9/16	14.28	5/8	15.87	16.25	18.54	34.54	41.91
DR-5-8	5/16	7.93	1/2	12.70	6.35	9/16	14.28	5/8	15.87	16.25	18.54	40.13	47.49
DR-6-4	3/8	9.52	1/4	6.35	4.82	5/8	15.87	11/16	17.46	16.76	19.30	34.03	41.40
DR-6-6	3/8	9.52	3/8	9.52	7.11	5/8	15.87	11/16	17.46	16.76	19.30	35.81	43.18
DR-6-8	3/8	9.52	1/2	12.70	7.11	5/8	15.87	11/16	17.46	16.76	19.30	41.14	48.51
DR-6-10	3/8	9.52	5/8	15.87	7.11	11/16	17.46	11/16	17.46	16.76	19.30	42.92	50.29
DR-6-12	3/8	9.52	3/4	19.05	7.11	13/16	20.64	11/16	17.46	16.76	19.30	42.92	50.29
DR-8-4	1/2	12.70	1/4	6.35	4.82	13/16	20.64	7/8	22.22	22.86	21.84	34.79	44.95
DR-8-6	1/2	12.70	3/8	9.52	7.11	13/16	20.64	7/8	22.22	22.86	21.84	36.57	46.73
DR-8-8	1/2	12.70	1/2	12.70	9.90	13/16	20.64	7/8	22.22	22.86	21.84	42.16	52.32
DR-8-10	1/2	12.70	5/8	15.87	10.41	13/16	20.64	7/8	22.22	22.86	21.84	43.68	53.84
DR-8-12	1/2	12.70	3/4	19.05	10.41	13/16	20.64	7/8	22.22	22.86	21.84	43.68	53.84
DR-8-16	1/2	12.70	1	25.40	10.41	1-1/16	26.98	7/8	22.22	22.86	21.84	50.03	60.19
DR-10-12	5/8	15.87	3/4	19.05	12.70	15/16	23.81	1	25.40	24.38	21.84	44.45	54.61
DR-10-14	5/8	15.87	7/8	22.22	12.70	15/16	23.81	1	25.40	24.38	21.84	45.97	56.13
DR-10-16	5/8	15.87	1	25.40	12.70	1-1/16	26.98	1	25.40	24.38	21.84	50.80	60.96
DR-12-8	3/4	19.05	1/2	12.70	9.90	1-1/16	26.98	1-1/8	28.57	24.38	21.84	44.45	54.61
DR-12-16	3/4	19.05	1	25.40	15.74	1-1/16	26.98	1-1/8	28.57	24.38	21.84	52.32	62.48
DR-16-20	1	25.40	1-1/4	31.75	22.35	1-3/8	34.93	1-1/2	38.10	31.24	26.41	68.32	80.51
DR-16-24	1	25.40	1-1/2	38.10	22.35	1-5/8	41.28	1-1/2	38.10	31.24	26.41	76.96	89.15
DR-16-32	1	25.40	2	50.80	22.35	2-1/8	53.98	1-1/2	38.10	31.24	26.41	100.33	112.52
DR-20-24	1-1/4	31.75	1-1/2	38.10	27.68	1-7/8	47.63	1-7/8	57.15	41.14	38.86	82.04	104.14
DR-20-32	1-1/4	31.75	2	50.80	27.68	1-7/8	47.63	1-7/8	76.20	41.14	38.86	103.12	125.22
DR-24-32	1-1/2	38.10	2	50.80	33.90	2-1/4	57.15	2-1/4	76.20	50.03	45.21	104.14	131.31

Złącze proste redukcyjne z adaptorem

Wartości ciśnień dla złączki DR znajdują się w tabeli nr 22 na stronie 14



Połączenie rury metrycznej z stalowym portem Dk-Lok

DR-...M-...

Kod	D	Średnica zewn. rury		E min	Odl. powierzchni płaskich		A	B	l	L
		in	mm		h	H				
DR-2M-2	2	1/8	3.17	1.7	12	12	12.9	15.3	26.9	33.5
DR-3M-2	3	1/8	3.17	2.0	12	12	12.9	15.3	26.9	33.5
DR-3M-4	3	1/4	6.35	2.4	12	12	12.9	15.3	29.5	36.1
DR-4M-4	4	1/4	6.35	2.4	12	12	13.7	16.1	30.5	37.1
DR-6M-2	6	1/8	3.18	2.0	14	14	15.3	17.7	29.5	36.9
DR-6M-4	6	1/4	6.35	4.8	14	14	15.3	17.7	31.8	39.2
DR-6M-5	6	5/16	7.93	4.8	14	14	15.3	17.7	32.5	39.9
DR-6M-6	6	3/8	9.52	4.8	14	14	15.3	17.7	33.3	40.7
DR-6M-8	6	1/2	12.70	4.8	14	14	15.3	17.7	38.9	46.3
DR-8M-6	8	3/8	9.52	6.4	15	16	16.2	18.6	34.5	42.0
DR-8M-8	8	1/2	12.70	6.4	15	16	16.2	18.6	40.1	47.6
DR-10M-6	10	3/8	9.52	7.1	18	19	17.2	19.5	36.6	44.2
DR-10M-8	10	1/2	12.70	7.9	18	19	17.2	19.5	42.2	49.8
DR-12M-8	12	1/2	12.70	9.5	22	22	22.8	22.0	42.2	52.3
DR-12M-12	12	3/4	19.05	9.5	22	22	22.8	22.0	43.7	53.8
DR-18M-12	18	3/4	19.05	15.1	27	30	24.4	22.0	46.0	56.1
DR-18M-16	18	1	25.40	15.1	27	30	24.4	22.0	52.3	62.4
DR-25M-16	25	1	25.40	20.2	35	38	31.3	26.5	57.2	69.5

Połączenie rury metrycznej z metrycznym portem Dk-Lok

DR-...M-...M

Kod	Średnica zewn. rury		E min	Odl. powierzchni płaskich		A	B	l	L
	D	D ₁		h	H				
DR-2M-3M	2	3	1.7	12	12	12.9	15.3	26.9	35.3
DR-3M-4M	3	4	2.4	12	12	12.9	15.3	28.4	35.0
DR-3M-6M	3	6	2.4	12	12	12.9	15.3	29.5	36.1
DR-3M-10M	3	10	2.4	12	12	12.9	15.3	31.8	38.4
DR-4M-6M	4	6	2.4	12	12	13.7	16.1	30.5	37.1
DR-6M-3M	6	3	1.8	14	14	15.3	17.7	29.5	36.9
DR-6M-8M	6	8	4.8	14	14	15.3	17.7	32.5	39.9
DR-6M-10M	6	10	4.8	14	14	15.3	17.7	33.3	40.7
DR-6M-12M	6	12	4.8	14	14	15.3	17.7	38.9	46.3
DR-8M-6M	8	6	4.6	15	16	16.2	18.6	32.8	40.3
DR-8M-10M	8	10	6.4	15	16	16.2	18.6	34.5	42.0
DR-8M-12M	8	12	6.4	15	16	16.2	18.6	40.1	47.6
DR-10M-6M	10	6	4.6	18	19	17.2	19.5	34.8	42.4
DR-10M-12M	10	12	7.9	18	19	17.2	19.5	42.2	49.8
DR-10M-15M	10	15	7.9	18	19	17.2	19.5	43.7	51.3
DR-10M-18M	10	18	7.9	19	19	17.2	19.5	43.7	51.3
DR-12M-6M	12	6	4.6	22	22	22.8	22.0	34.8	44.9
DR-12M-10M	12	10	7.7	22	22	22.8	22.0	36.6	46.7
DR-12M-16M	12	16	9.5	22	22	22.8	22.0	43.7	53.8
DR-12M-18M	12	18	9.5	22	22	22.8	22.0	43.7	53.8
DR-12M-20M	12	20	9.5	22	22	22.8	22.0	46.0	56.1
DR-12M-22M	12	22	9.5	24	22	22.8	22.0	46.0	56.1
DR-12M-25M	12	25	9.5	27	22	22.8	22.0	52.3	62.4
DR-16M-12M	16	12	9.1	24	25	24.4	22.0	42.9	53.0
DR-18M-12M	18	12	9.1	27	30	24.4	22.0	44.5	54.6
DR-18M-16M	18	16	12.7	27	30	24.4	22.0	46.0	56.1
DR-18M-20M	18	20	15.1	27	30	24.4	22.0	47.5	57.6
DR-18M-22M	18	22	15.1	27	30	24.4	22.0	47.5	57.6
DR-18M-25M	18	25	15.1	27	30	24.4	22.0	52.3	62.4
DR-20M-16M	20	16	12.7	30	32	26.0	22.0	47.8	57.9
DR-20M-18M	20	18	13.9	30	32	26.0	22.0	47.8	57.9
DR-20M-22M	20	22	15.8	30	32	26.0	22.0	49.3	59.4
DR-20M-25M	20	25	15.8	30	32	26.0	22.0	54.1	64.2
DR-22M-18M	22	18	13.9	30	32	26.0	22.0	47.8	57.9
DR-22M-20M	22	20	15.1	30	32	26.0	22.0	49.3	59.4
DR-22M-25M	22	25	18.3	30	32	26.0	22.0	54.1	64.2
DR-25M-18M	25	18	13.9	35	38	31.3	26.5	50.8	63.1
DR-25M-20M	25	20	15.1	35	38	31.3	26.5	52.3	64.6

Powyższe wymiary podane w milimetrach mają charakter orientacyjny, a producent zastrzega sobie możliwość wprowadzenia zmian. Wymiary dotyczące długości podane są dla nakrętek dokręconych tylko ręcznie.