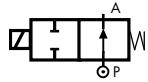


## 2/2 WAY DIRECT ACTING SOLENOID VALVE, G 1/8"



normally open

TYPE: RB214

### TECHNICAL SPECIFICATIONS

- Media: water, oil, air
- Media temperature:  $-10^{\circ}\text{C} \div +130^{\circ}\text{C}$
- Ambient temperature:  $-10^{\circ}\text{C} \div +50^{\circ}\text{C}$
- Body material: brass (CW617N EN 12165)
- Operator material: stainless steel
- Seal material: foodgrade FKM
- Coil power: AC 10VA (holding)  
AC 16VA (inrush)  
DC 7W
- Protection class: IP 65 (with connector)

### OPTIONS

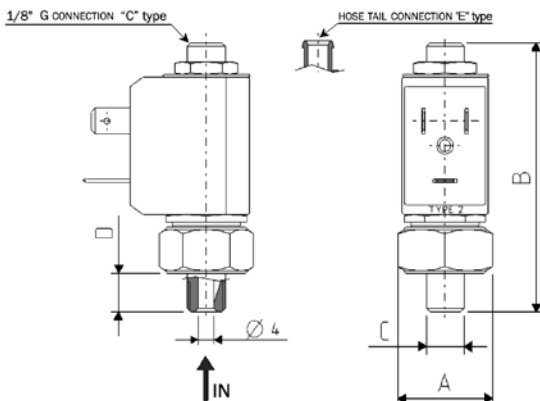
- EPDM seal for air and hot water MAX  $120^{\circ}\text{C}$  (e.g. code RB214CED)
- Armature tube with hose tail  $\varnothing 6$  mm (e.g. code RB214EVD)
- NC version available upon request (e.g. code B214EVB)



COMPRESSED AIR

SELECTION TABLE

VALVE	G connection	nominal diameter	flow rate Kvs	OPD			COILS	
				min	max AC	max DC	code	[Volts/Hz]
code	[ISO 228 G]	[mm]	[l/min]	[barg]	[barg]	[barg]	code	[Volts/Hz]
RB214CVD	1/8"	1.7	1.2	0	14	14	2250	24v DC
							2200	24v 50/60Hz
							2400	110v 50Hz - 120v 60Hz
							2600	200v 50Hz - 220v 60Hz
							2700	230v 50Hz - 240v 60Hz



DIMENSIONS & WEIGHTS

G connection	A	B	C	D	weight
[ISO 228 G]	[mm]	[mm]	[mm]	[mm]	[kg]
1/8"	21	65.7	1/8"	9.5	--