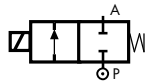


2/2 WAY DIRECT ACTING SOLENOID VALVE, G 1/8" - G 1/4"



normally closed

HIGH PRESSURE

TYPE: D298/299

TECHNICAL SPECIFICATIONS

- Media[®]: water, oil, liquids and aggressive fluids
- Media temperature: -10°C ÷ +130°C
- Ambient temperature: -10°C ÷ +50°C
- Body material: stainless steel (1.4305 EN 10088/AISI 303)
- Orifice material: stainless steel (1.4305 EN 10088/AISI 303)
- Operator material: stainless steel
- Seal material: Ruby
- Coil power: AC 25vA (holding)
AC 50vA (inrush)
DC 22w
- Protection class: IP 65 (with connector)

OPTIONS

Standard 7000 series coils may be used (AC 18vA - DC 14w), however the maximum pressure rating will be reduced. For further details please contact M&M Sales Department. Also available with G 1/8" connections (e.g. code D298DRB1), performance ratings remain the same as D299.

NOTES

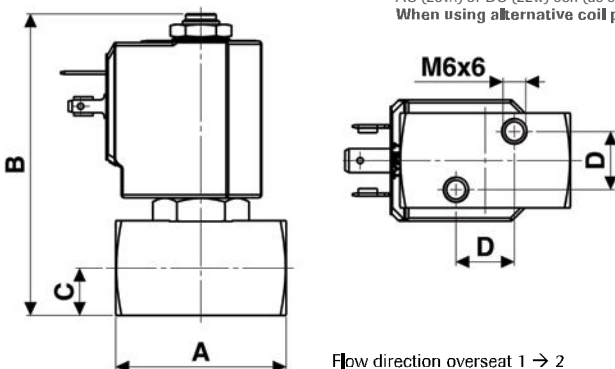
❶ Not 100% leak-proof when used with air/gases. Approximate leak rate is 1,5 ml/min at max OPD.



SELECTION TABLE

VALVE	G connection	nominal diameter	flow rate Kvs	OPD			COILS	
				min	max AC	max DC	high power - class "H"	
code	[ISO 228 G]	[mm]	[l/min]	[barg]	[barg]	[barg]	code	[Volts/Hz]
D299DRB1	1/4"	1.2	0.7	0	200	110	72Z1	24v DC
D299DRC1	1/4"	1.5	1.3	0	200	80	72K1	24v 50/60Hz
D299DRE1	1/4"	2.0	2.3	0	140	30	74K1	110v 50Hz - 120v 60Hz
D299DRG1	1/4"	2.5	3.4	0	90	23 [ⓔ]	77K1	230v 50Hz - 240v 60Hz
D299DRH1	1/4"	3.0	4.5	0	50	14 [ⓔ]		

[ⓔ] Max OPD similar to that of the same valve when equipped with FKM seal and standard 7000 series coil (e.g. code D299DVG 7250).
ATTENTION: When high pressure valves are supplied without a coil, their nameplates display the max. OPD of the valve when equipped with an AC (25vA) or DC (22w) coil (as shown in the SELECTION TABLE above).
 When using alternative coil power ratings please ensure to request separately the appropriate nameplate at time of order.



DIMENSIONS & WEIGHTS

G connection	A	B	C	D	weight
[ISO 228 G]	[mm]	[mm]	[mm]	[mm]	[kg]
1/8" - 1/4"	45	80	12.5	15.4	0.36