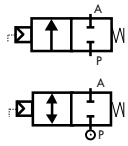
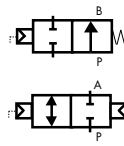


## 2/2 WAY PISTON ACTUATED VALVE G 1/2" ÷ 3/4" – STAINLESS STEEL



**NC normally closed  
flow over seat**

**NC normally closed  
Bi-Directional**



**NO normally open  
flow under seat**

**Double acting  
Bi-Directional**

### TECHNICAL SPECIFICATIONS

- Media: water, oil, air, aggressive media and steam ①
- Media temperature: -10°C ÷ +180°C
- Ambient temperature: -10°C ÷ +60°C
- Pilot media: air, inert gases
- Body material: cast AISI 316L (CF3M), see page 37
- Bonnet material: cast AISI 316L (CF3M), see page 37
- Actuator body material: Polyamide PA6 (reinforced fiberglass 30%)
- Seal material: PTFE type TFM 1600
- Position indicator as standard

### BENEFITS

- Waterhammer-free design for BPG - DPG (2→1)
- Actuator housing rotation 360°
- Design suitable for vacuum applications up to 10<sup>-2</sup> mbar

### OPTIONS

- NPT Connection (e.g. Code PN205CTW00)
- Welded ends see page 17

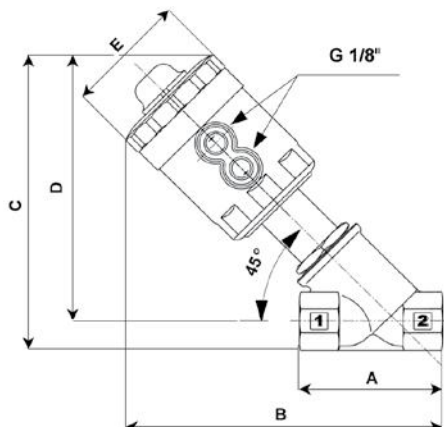
### TYPE: COMPACT 45



### SELECTION TABLE

VALVE	Connection	DN	Flow rate Kvs	Working pressure ①		Flow direction	Pilot pressure ②		Function
				min	max		min	max	
Code	[ISO 228 G]	[mm]	[l/min]	[barg]	[barg]	-	[barg]	[barg]	-
PG205CTW00	1/2"	15	75	0	16	1→2	3.8	10	normally closed
PG206CTX00	3/4"	20	133	0	16	1→2	5.8	10	
BPG205CTW00	1/2"	15	75	0	16 / 16	1→2 / 2→1	6.2 / 5	10	normally closed
BPG206CTX00	3/4"	20	133	0	16 / 7	1→2 / 2→1	8.7 / 5	10	
RPG205CTW00	1/2"	15	75	0	16	2→1	4	10	normally open
RPG206CTX00	3/4"	20	133	0	16	2→1	6.2	10	
DPG205CTW00	1/2"	15	75	0	16 / 16	1→2 / 2→1	3	10	double acting
DPG206CTX00	3/4"	20	133	0	16 / 16	1→2 / 2→1	5	10	

① Steam: max working pressure 10 bar (9 barg); ② Minimum pilot pressure at the max working pressure; for lower working pressures please refer to the comparative charts



### DENISONS & WEIGHTS

Connection	Actuator Ø	A	B	C	D	E	Weight
[ISO 228 G]	[mm]	[mm]	[mm]	[mm]	[mm]	[mm]	[kg]
1/2"	45	65	144	136	123	57	0.8
3/4"	45	75	149	142	126	57	0.9