

2/2 WAY PISTON ACTUATED VALVE – WELDED CONNECTIONS – AISI 316L

TECHNICAL SPECIFICATIONS

See general features on pages 11, 12, 13, 14, 15

OPTIONS

Welded connection to DIN 3239 pipe (e.g. Code BPE205STW00)

Manual override (e.g. Code PS205STW0M0) see page 28

Stroke regulator (e.g. Code BPB210STJR0) see page 28

Travel switch (e.g. Code RPW208LTZ0) see page 28

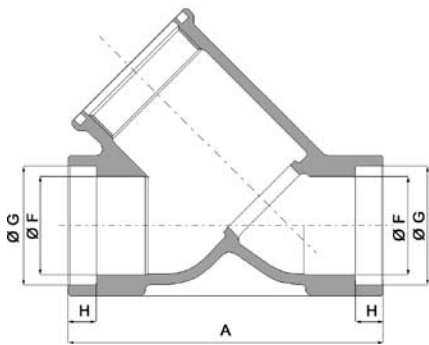
High temperature version (e.g. Code PS205STW0H)

TYPE: ALL TYPES

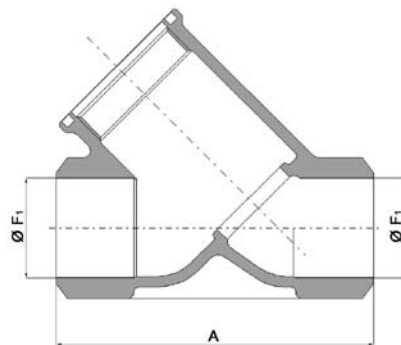


SELECTION TABLE

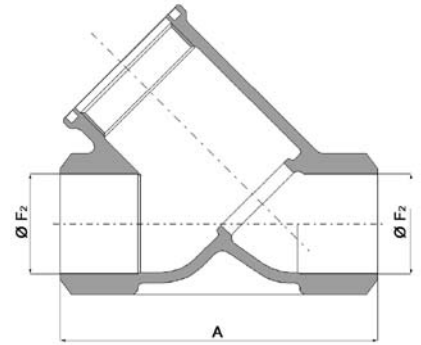
DN	SOCKET WELD to ISO 65/ANSI B 36.10 pipe			BUTT WELD to ISO 65/ANSI B 36.10 pipe			BUTT WELD to DIN 11850 pipe			BUTT WELD to ISO 4200 pipe		
	Actuator Ø 45	Actuator Ø 63	Actuator Ø 90	Actuator Ø 45	Actuator Ø 63	Actuator Ø 90	Actuator Ø 45	Actuator Ø 63	Actuator Ø 90	Actuator Ø 45	Actuator Ø 63	Actuator Ø 90
[mm]	Code	Code	Code	Code	Code	Code	Code	Code	Code	Code	Code	Code
15	PS205CTW00	PS205STW00	–	PB205CTW00	PB205STW00	–	PW205CTW00	PW205STW00	–	PH205CTW00	PH205STW00	–
20	PS206CTX00	PS206STX00	–	PB206CTX00	PB206STX00	–	PW206CTX00	PW206STX00	–	PH206CTX00	PH206STX00	–
25	–	PS207STY00	PS207LTY00	–	PB207STY00	PB207LTY00	–	PW207STY00	PW207LTY00	–	PH207STY00	PH207LTY00
32	–	PS208STZ00	PS208LTZ00	–	PB208STZ00	PB208LTZ00	–	PW208STZ00	PW208LTZ00	–	PH208STZ00	PH208LTZ00
40	–	PS209STK00	PS209LTK00	–	PB209STK00	PB209LTK00	–	PW209STK00	PW209LTK00	–	PH209STK00	PH209LTK00
50	–	PS210STJ00	PS210LTJ00	–	PB210STJ00	PB210LTJ00	–	PW210STJ00	PW210LTJ00	–	PH210STJ00	PH210LTJ00



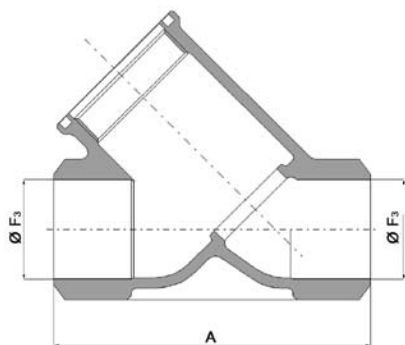
Valve with socket weld connection to ISO 65/ANSI B 36.10 pipe



Valve with butt weld connection to ISO 65/ANSI B 36.10 pipe
Welded ends complying with ISO 6761



Valve with butt weld connection to DIN 11850 pipe
Welded ends complying with ISO 6761



Valve with butt weld connection to ISO 4200 pipe
Welded ends complying with ISO 6761

DIMENSIONS

Actuator Ø	DN	A	Ø F	Ø F1	Ø F2	Ø F3	Ø G	H
[mm]	[mm]	[mm]	[mm]	[mm]	[mm]	[mm]	[mm]	[mm]
45	15	65	17.4	17.4	16	18.1	22	5
	20	75	22.8	22.8	20	23.7	27.5	7
63	15	65	17.4	17.4	16	18.1	22	5
	20	75	22.8	22.8	20	23.7	27.5	7
	25	90	28.3	28.3	26	29.7	34	8
	32	110	37.1	37.1	32	38.4	43	10
	40	120	42.7	42.7	38	44.3	49	12
90	50	150	54.8	54.8	50	55.1	61.5	16
	25	90	28.3	28.3	26	29.7	34	8
	32	110	37.1	37.1	32	38.4	43	10
	40	120	42.7	42.7	38	44.3	49	12
	50	150	54.8	54.8	50	55.1	61.5	16

Note: For overall dimensions please refer to pages 11, 12, 13, 14, 15.