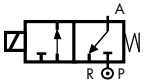


3/2 WAY DIRECT ACTING PILOT VALVES



normally closed

TYPE: B356 / B326 / D326

TECHNICAL SPECIFICATIONS

Media: water, inert gases, air		
Media temperature: -10°C ÷ +60°C		
Ambient temperature: -10°C ÷ +60°C		
Body material: brass (CW617N EN 12165) with electroless nickel plating treatment		
Operator material: stainless steel		
Seal material: FKM		
Series 2000 coils: connection to DIN 46244		
Electrical connection: fast on connection 6.3x0.8		
Series 7000 coils: connection to DIN EN 175301-803 form A (ex DIN 43650-A)		
Coil power:	AC	DC
SERIE 2000	10VA (holding)	7W
	16VA (inrush)	
SERIE 7000	18VA (holding)	14W
	36VA (inrush)	
Protection class: IP 65 (with connector)		



NOTES

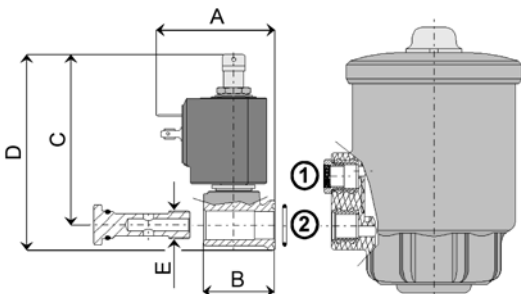
Standard manual override/electroless nickel plating treatment
 Expressly designed to pilot M&M Piston Actuated Valves
 Valve rotation 360° around port

SELECTION TABLE

VALVE	Actuator Ø	Connection	DN	Flow rate Kvs	OPD			COILS	
					min	max AC	max DC	Code	[Volts/Hz]
Code	[mm]	[type]	[mm]	[l/min]	[barg]	[barg]	[barg]	Code	[Volts/Hz]
B356CVCMK	45	"push-in" pneumatic fitting for Ø 6 mm external tube	1.5	0.7	0	10	10	2250	24v DC
B326CVCMK	63		1.5	0.7	0	10	10	2200	24v 50/60Hz
D326CVEMK	90		2.0	1.3	0	10	10	2400	110v 50Hz - 120v 60Hz
								2600	200v 50Hz - 220v 60Hz
								2700	230v 50Hz - 240v 60Hz
								7250	24v DC
								7200	24v 50/60Hz
								7400	110v 50Hz - 120v 60Hz
								7600	200v 50Hz - 220v 60Hz
								7700	230v 50Hz - 240v 60Hz

Screw the pilot valve bolt into the inlet port of the piston valve actuator using a maximum torque level of 5 Nm:

- into hole 1 for **NORMALLY OPEN VALVES (RPG/RCG)**
- into hole 2 for **NORMALLY CLOSED VALVES (PG-BPG/CG-BCG)**



DIMENSIONS & WEIGHTS

VALVE	A	B	C	D	E	Weight
Code	[mm]	[mm]	[mm]	[mm]	[ISO 228 G]	[kg]
B356	48	31	66.5	76.5	1/8"	0.25
B326	51.5	34.5	66.3	78.3	1/4"	0.25
D326	57	34.5	82.6	94.6	1/4"	0.30