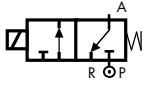


3/2 WAY DIRECT ACTING PILOT VALVES FOR USE IN POTENTIALLY EXPLOSIVE ATMOSPHERE ATEX II 2 GD

Solenoid valve equipped with a coil suitable for use in potentially explosive atmosphere, coil protection class EEx m II 2GD T4



normally closed

TYPE: N326CVEK



TECHNICAL SPECIFICATIONS

Media: water, inert gases, air
Media temperature: -10°C ÷ +60°C
Ambient temperature: -20°C ÷ +50°C
Body material: brass (CW617N EN 12165) with electroless nickel plating treatment
Operator material: stainless steel
Protection class: EEx m II 2GD T4
Seal material: FKM
Protection class: IP65

NOTES

- Coils are supplied with a 3-meter power cable, wired on a non-removable plug
- Expressly designed to pilot M&M Piston Actuated Valves
- Valve rotation 360° around port
- Manual override not available
- Spare parts not available.
- The valve is supplied inclusive of coil and plug



WARNING!
Valves for potentially explosive atmosphere are available from factory only:
REPLACING THE SOLENOID DOESN'T MAKE A VALVE EXPLOSION-PROOF!

* A mains fuse or an equivalent means of protection (breaking value shown on table for each coil) shall be installed on the mains supply line. Absence of mains protection does not conform to safety standards (EC Directives 94/9/EC and 1999/92/EC) and could be a potential risk of explosion.

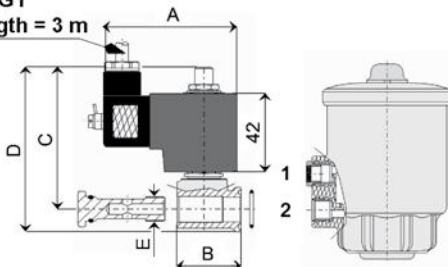
SELECTION TABLE

VALVE	Connection	DN	Flow rate Kvs	OPD			COILS		Power	FUSES *
				min	max AC	max DC	Code	[Volts/Hz]		
Code	[type]	[mm]	[l/min]	[barg]	[barg]	[barg]	Code	[Volts/Hz]	Holding	[m/A]
N326CVEK	"push-in" pneumatic fitting for Ø 6 mm external tube	2.0	1.3	0	10	10	N253	24v DC	10.1W	800
							N203	24v 50/60Hz	7.2VA	800
							N403	110v 50Hz	9.1VA	200
							NK03	120v 60Hz	8.6VA	200
							N703	230v 50Hz	8.5VA	100

Screw the pilot valve bolt into the inlet port of the piston valve actuator using a maximum torque level of 5 Nm:

- into hole 1 for **NORMALLY OPEN VALVES (RPG/RCG)**
- into hole 2 for **NORMALLY CLOSED VALVES (PG-BPG/CG-BCG)**

Cable type
H05V2V2-F 3G1
standard length = 3 m



DIMENSIONS & WEIGHTS

VALVE	A	B	C	D	E	Weight
Code	[mm]	[mm]	[mm]	[mm]	[ISO 228 G]	[kg]
N326	72	34.5	74	86	1/4"	0.68