

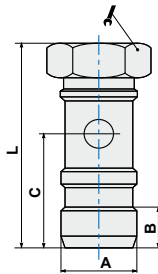




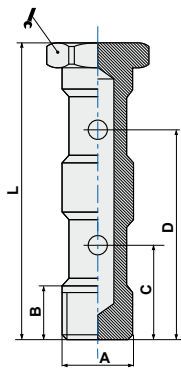
ART. 407V Vite cava semplice  
Banjo stem single

CODICE	A	B	C	L		
407M5	M5	5,8	9,6	17,5	8	100
40718V	G1/8	9	15	28	14	100
40714V	G1/4	11	18	33	17	50
40738V	G3/8	12	21,5	37	22	50
40712V	G1/2	14	24	42	27	25





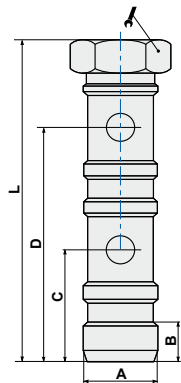
ART. 407 Vite cava semplice con O-Ring  
Banjo stem single with O-Ring

CODICE	A	B	C	L		
40718	G1/8	4,5	13,75	25	14	100
40714	G1/4	6	16,7	30	17	50
40738	G3/8	6	18	34	22	25
40712	G1/2	7,4	21,5	35,5	27	25





ART. 408V Vite cava doppia  
Banjo stem double



CODICE	A	B	C	D	L		
40818V	G1/8	9	15	31	44,5	14	50
40814V	G1/4	11	17	36	51,5	17	50
40838V	G3/8	12	20,5	42	58,6	22	25
40812V	G1/2	14	24	50	68	27	20

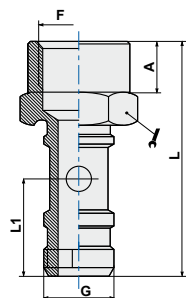


ART. 408 Vite cava doppia con O-Ring  
Banjo stem double with O-Ring


CODICE	A	B	C	D	L		
40818	G1/8	4,5	13	29	40	14	50
40814	G1/4	6	16,5	33,5	47	17	50
40838	G3/8	8,5	18	37,6	52,5	22	25
40812	G1/2	10,8	21,5	45	63	27	20

**ART. 409** Vite cava semplice femmina con O-Ring  
Female banjo stem single with O-Ring

CODICE	A	F	G	L	L1		
40918	7	G1/8	G1/8	32	13,25	14	50
40914	9,3	G1/4	G1/4	38	15,2	17	50




**ART. 411** Rondella distanziatrice  
Spacer washer

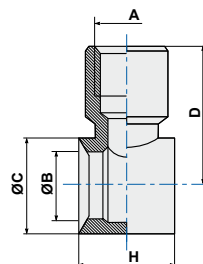
CODICE	A	ØB	ØD	H	
411PM5	M5	9	5,1	1,5	100
411P18	G1/8	14	9,8	1,5	100
411P14	G1/4	18	13,5	1,5	100
411P38	G3/8	22	17	1,5	100
411P12	G1/2	27	21,5	1,5	100
411M5	M5	8,8	5,2	1	100
41118	G1/8	13,8	9,8	1,5	100
41114	G1/4	18	13,2	1,5	100
41138	G3/8	21	16,8	1,5	100
41112	G1/2	26	20,8	1,5	100
41134	G3/4	32,8	26,8	1,5	100




P = versione in nylon  
P = nylon material  
A = taglia - A = size

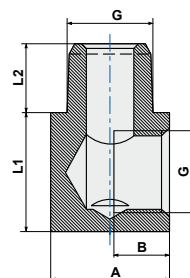
**ART. 412** Anello singolo femmina  
Female single banjo body

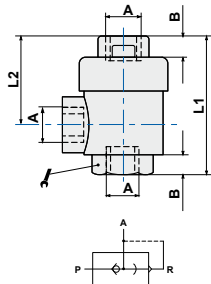
CODICE	A	ØB	ØC	D	H	
41218	G1/8	9,9	14	20	15	50
41214	G1/4	13,3	18	24	17	50
41238	G3/8	16,8	21	28,5	20	25
41212	G1/2	21	26	34,5	24	25



**ART. RLB100** Raccordo ad "L" M/F conico  
Male-female elbow tapered

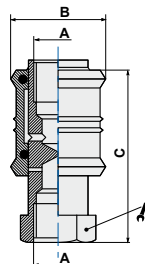
CODICE	G	A	B	L1	L2	
RLB100M5	M5	9	4,5	9	4,5	100
RLB10018	1/8	14	6,5	14	8	100
RLB10014	1/4	17	9	17	9,5	100





**ART. 503** Valvola scarico rapido  
Quick exhaust valve

CODICE	A	B	L1	L2			
50318	G1/8	8	42	28		14	25
50314	G1/4	11	53,3	34,5		19	25
50338	G3/8	12	58	36		21	10
50312	G1/2	14	71	44		26	10
50334	G3/4	18	86	52		32	5
50301	G1"	19	94	56		38	1



**ART. 504** Valvola a corsoio manuale  
Hand slide valve

CODICE	A	ØB	C			
*504M5	M5	15	33		10	10
*50418	G1/8	28	53		17	10
*50414	G1/4	30	58		19	10
*50438	G3/8	35	68		22	10
*50412	G1/2	40	80		27	10
*50434	G3/4	48	80		36	5

\* nota: corpo in alluminio  
\* note: aluminium body

### Esempi di combinazioni

#### Examples of combinations

Asta regolatore  
+ anello singolo a calzamento  
Speed controller stem  
+ quick single banjo body

Asta doppia girevole  
+ anello doppio automatico  
+ anello singolo automatico  
Swivel double stem  
+ push-in double banjo body  
+ push-in single banjo body

Asta doppia girevole  
+ 2 anello singolo a calzamento  
Swivel double stem  
+ 2 quick single banjo body

Asta regolatore con pomolo  
+ anello singolo femmina  
Speed controller stem  
+ female single banjo body

Asta singola girevole  
+ anello singolo ad ogiva  
Swivel single stem  
+ compression single banjo body

Asta singola girevole  
+ anello singolo femmina  
Swivel single stem  
+ female single banjo body

