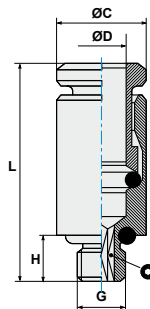


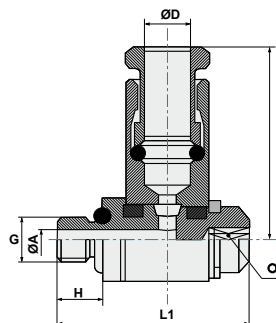
ART. **RDR** Dritto filetto cilindrico maschio con O-Ring
Straight male adaptor (parallel)

CODICE	D	G	C	H	L		⊙	🔪
RDR3.20	2,00	M3	5,4	3,0	13,5		1,5	100
RDR3.30	3,00	M3	5,8	3,0	14,5		1,5	100
RDR3.31	3,17	M3	5,8	3,0	14,0		1,5	100
RDR5.20	2,00	M5	5,4	3,5	13,0		1,5	100
RDR5.30	3,00	M5	5,8	3,5	14,5		2,0	100
RDR5.31	3,17	M5	5,8	3,5	14,5		2,0	100
RDR5.40	4,00	M5	6,8	3,5	16,5		2,0	100



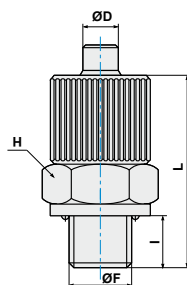
ART. **RGR** Asta con filetto cilindrico in anello semplice
Complete single banjo with stem

CODICE	D	G	A	H	L1	L		⊙	🔪
RGR3.20	2,00	M3	1,4	3,0	13,5	13,0		1,5	50
RGR3.30	3,00	M3	1,4	3,0	13,5	13,5		1,5	50
RGR3.31	3,17	M3	1,4	3,0	13,5	13,5		1,5	50
RGR5.20	2,00	M5	2,0	3,5	14,0	13,0		2,0	50
RGR5.30	3,00	M5	2,0	3,5	14,0	13,5		2,0	50
RGR5.31	3,17	M5	2,0	3,5	14,0	13,5		2,0	50
RGR5.40	4,00	M5	2,0	3,5	14,0	14,5		2,0	50



ART. **TC** Raccordo diritto maschio cilindrico
Parallel straight male adaptor

CODICE	ØD	ØF	I	L	H		🔪
TC04M5	4	M5x0,8	4	17,0	8		100
TC0418	4	G1/8	6	20,5	14		100
TC06M5	6	M5x0,8	4	20,8	10		100
TC06M6	6	M6x1	4	20,8	10		100
TC0618	6	G1/8	6	23,3	14		100



ART. **TL** Raccordo ad L maschio conico
Elbow taper male adaptor

CODICE	ØD	ØF	I	H	H1	L1		🔪
TL04M5	4	M5x0,8	4,0	13,0	9,0	13,5		50
TL0418	4	G1/8	5,0	19,5	12,5	16,5		50
TL06M5	6	M5x0,8	4,9	13,9	9,4	16,3		50
TL06M6	6	M6x1	4,0	14,2	9,2	17,5		50
TL0618	6	G1/8	5,0	19,5	12,5	19,3		50

