

# 26-1700 Series

## Regulators - Relief / Backpressure

D26170543X012

### Specifications

For other materials or modifications, please consult TESCOM.

#### OPERATING PARAMETERS

Pressure rating per criteria of ANSI/ASME B31.3

<b>Maximum Inlet Pressure</b>	10,000 psig / 689 bar
<b>Controlled Pressure Ranges</b>	5-500, 5-800, 10-1500, 15-2500, 25-4000, 50-6000, and 200-10,000 psig 0.35-34.5, 0.35-55.2, 0.69-103, 1.03-172, 1.72-276, 3.45-414, and 13.8-689 bar
<b>Design Proof Pressure</b>	150% maximum rated
<b>Leakage</b>	Bubble-tight
<b>Operating Temperature</b>	-40°F to 165°F / -40°C to 74°C
<b>Flow Capacity</b>	C <sub>v</sub> = 0.10 (26-17X1 through 26-17X4) C <sub>v</sub> = 0.14 (26-17X5 through 26-17X7)
<b>Maximum Operating Torque</b>	40 in-lbs / 4.5 N•m

#### MEDIA CONTACT MATERIALS

<b>Back-up Ring</b>	Teflon®
<b>Body</b>	316 Stainless Steel
<b>O-Rings</b>	Buna-N
<b>Seal</b>	CTFE
<b>Seat</b>	CTFE (26-17X1 through 26-17X4) Teflon® (26-17X5 through 26-17X7)
<b>Trim</b>	300 Series Stainless Steel
<b>Remaining Parts</b>	300 Series Stainless Steel

#### OTHER

<b>Cleaning</b>	CGA 4.1 and ASTM G93
<b>Weight</b>	5 lbs / 2.2 kg

Teflon® is a registered trademark of E.I. du Pont de Nemours and Company.



TESCOM 26-1700 Series regulator controls pressures up to 15,000 psig / 1034 bar and is suitable for gas or liquid service.

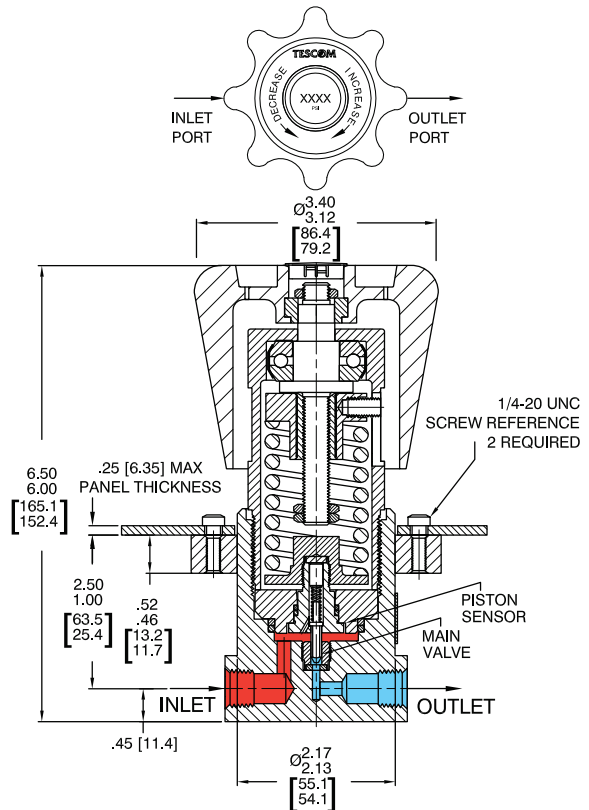
### Applications

- Pump discharge pressure control
- Reactor pressure control
- Over-pressurization relief

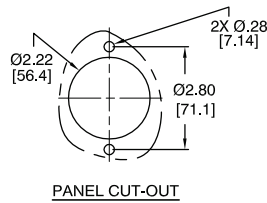
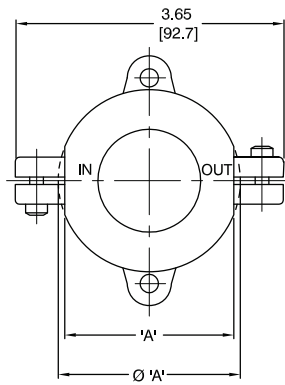
### Features and Benefits

- Accuracy: ±1% of central pressure range
- NACE Compatible design available
- Wide range of applications due to:
  - Seven different control pressure ranges
  - 200-15,000 psig / 13.8-1034 bar control is optional
  - High flow C<sub>v</sub> = 0.60 and low flow C<sub>v</sub> = 0.02 models are available
- Bubble-tight shut-off at all reseal pressures
- Safe and reliable piston-style sensor
- Panel mounting is standard
- Compatible with TESCOM Air Actuators and ER3000 Electropneumatic Controllers

26-1700 Series Regulator Drawing



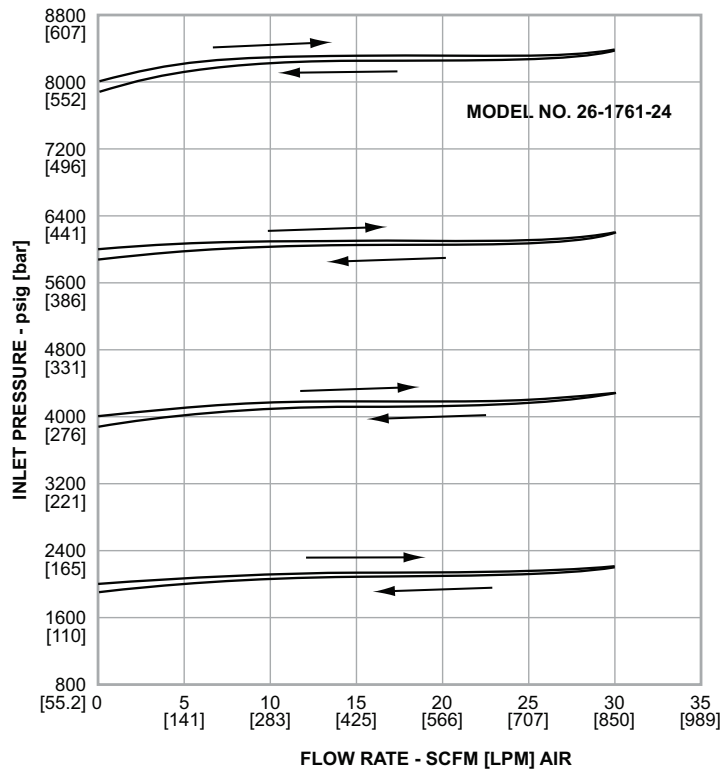
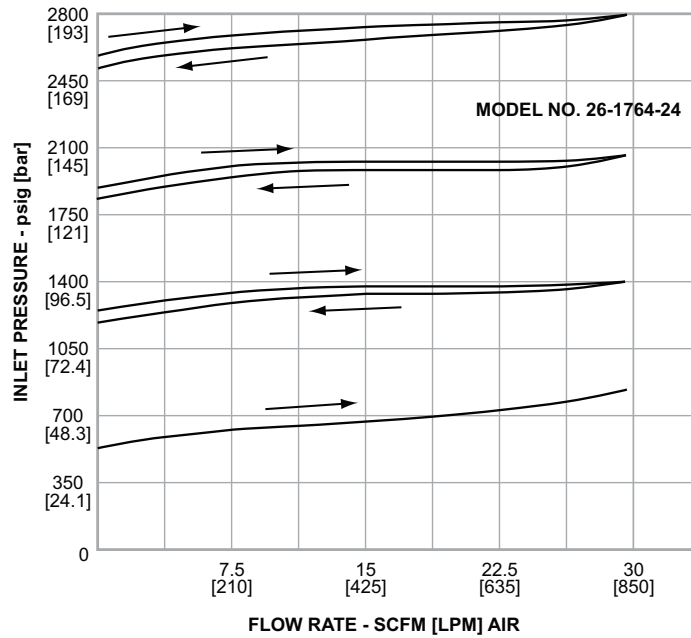
INLET AND OUTLET PORT	*A*
1/4 EXCEPT NPTF	2.30
1/4 AND 3/8 NPTF	Ø 2.48
3/8 MEDIUM AND HIGH PRESSURE	3.08
1/2 NPTF	3.33



All dimensions are reference & nominal  
Metric [millimeter] equivalents are in brackets

## 26-1700 Series Regulator Flow Charts

For more information on how to read flow curves, please refer to the Flow Curves and Calculations document (debul2007x012) in the TESCOM catalog or on [www.tescom.com](http://www.tescom.com).



## 26-1700 Series Regulator Part Number Selector

Repair Kits, Accessories & Modifications may be available for this product. Please contact TESCOM for more information.

Example for selecting a part number:

**26-17                    6                    4                    -                    2                    4                    [BLANK]**

BASIC SERIES	BODY AND BONNET MATERIAL	CONTROLLED PRESSURE RANGES	INLET AND OUTLET PORT TYPE	INLET AND OUTLET PORT SIZE	OPTIONS
26-17	6 – 316 Stainless Steel	1 – 200-10,000 psig 13.8-689 bar 2 – 50-6000 psig 3.45-414 bar 3 – 25-4000 psig 1.72-276 bar 4 – 15-2500 psig 1.03-172 bar 5 – 10-1500 psig 0.69-103 bar 6 – 5-800 psig 0.35-55.2 bar 7 – 5-500 psig 0.35-34.5 bar	1 – SAE 2 – NPTF 3 – MS33649 4 – High Pressure 6 – Medium Pressure	2 – 1/8" 4 – 1/4" 6 – 3/8" 8 – 1/2**	[BLANK] – None - 065 – 316 Stainless Steel Wetted - 099 – 200-15,000 psig / 13.8-1034 bar Control Range, C <sub>v</sub> = 0.02 - 154 – C <sub>v</sub> = 0.02 - 161 – Urethane O-Rings CO <sub>2</sub> Service - 184 – C <sub>v</sub> = 0.60, 5000 psig / 345 bar, 1/2" NPTF Ports

\* Available for NPTF only.

## 26-1700F Series

Regulators - Relief / Backpressure

D2617FL10141XEN2

## Specifications

*For other materials or modifications, please consult TESCOM.*

## OPERATING PARAMETERS

*Pressure rating per criteria of ANSI/ASME B31.3***Controlled Pressure Range**

5-500 psig / 0.34-34.5 bar

**Design Proof Pressure**

150% of rated pressure

**Design Burst Pressure**

400% of rated pressure

**Leakage**

Bubble-tight

**Flow Capacity** $C_v = 0.14$ **Operating Temperature**

-15°F to 165°F / -26°C to 74°C

**Maximum Operating Torque**

40 in-lbs / 4.5 N•m

## MEDIA CONTACT MATERIALS

**Body**

316L Stainless Steel

**Main Valve Seat**

Teflon®

**Seal**

CTFE

**Back-up Rings**

Teflon®

**O-Ring**

Buna-N

**Remaining Parts**

300 Series Stainless Steel

## OTHER

**Weight (approximate)****DN 15:** 8 lbs / 3.6 kg**DN 20/25:** 11 lbs / 5 kg*Teflon® is a registered trademark of E.I. du Pont de Nemours and Company.*

TESCOM 26-1700F Series backpressure regulators provide welded flanges according to EN 1092 and are suitable for gas or liquid service.

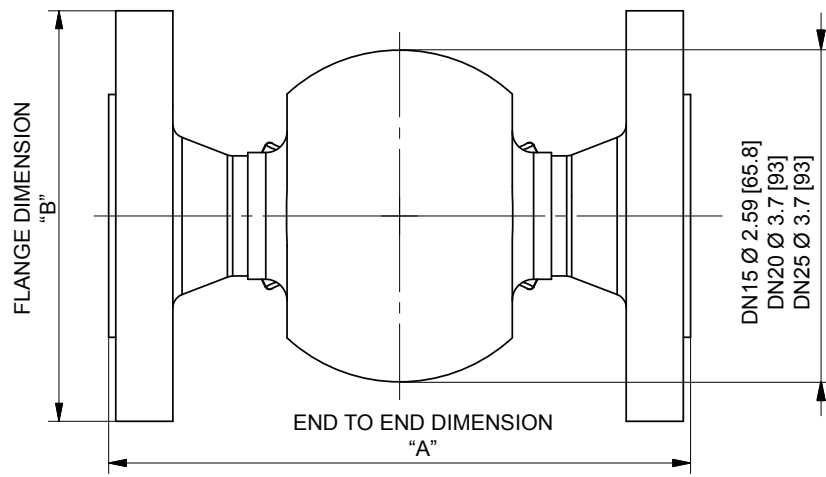
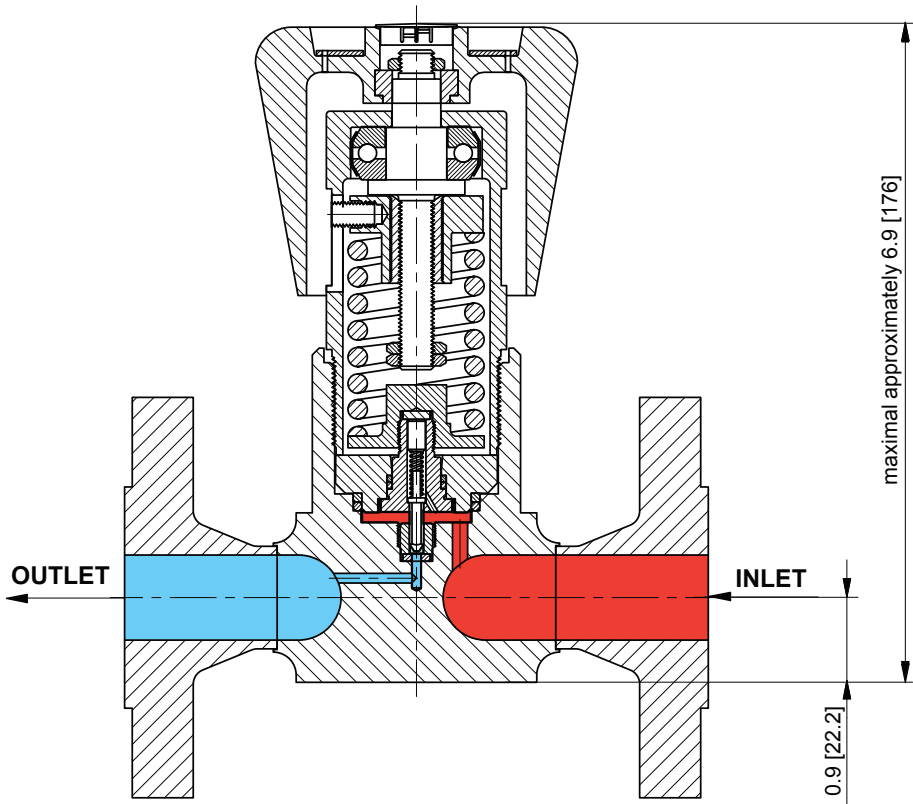
## Applications

- Pilot plants (i.e. in the chemical industry)
- Pressure control of reactor or vessel applications

## Features and Benefits

- Flange connections according to DIN EN 1092-1 Type 11 for easy line integration
- Face-to-face dimensions according to DIN EN 558, Row 1
- Connection up to DN 25
- Setpoint repeatability exceeds conventional relief valves
- Bubble-tight shutoff at all reseal pressures
- Safe and reliable piston-style sensor
- Compatible with the Tescom Air Actuator and ER3000 Electropneumatic Controller for remote control
- Other connection standards upon request

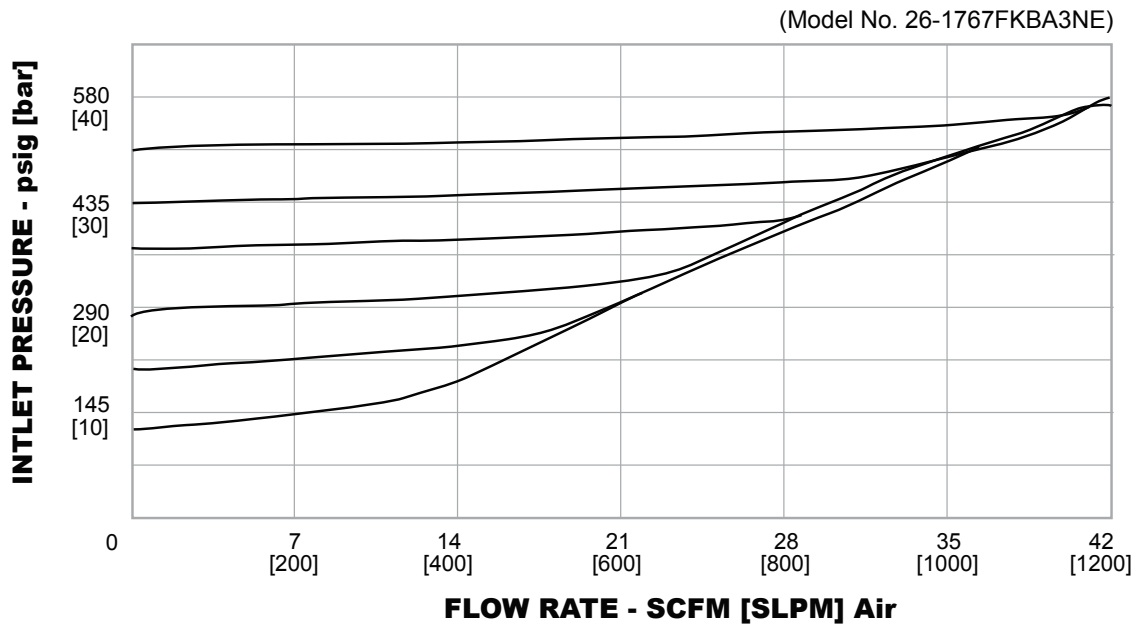
26-1700F Series Regulator Drawing



All dimensions are reference & nominal  
 Metric [millimeter] equivalents are in brackets

## 26-1700F Series Regulator Flow Chart

For more information on how to read flow curves, please refer to the Flow Curves and Calculations document (debul2007x012) in the TESCOM catalog or on [www.tescom.com](http://www.tescom.com).



## 26-1700F Series Regulator Part Number Selector

Repair Kits, Accessories & Modifications may be available for this product. Please contact TESCOM for more information.

Example for selecting a part number:

BASIC SERIES	BODY AND FLANGE MATERIAL	CONTROLLED PRESSURE RANGE	INLET AND OUTLET PORT TYPE	"A" ±.08" ±2 mm	"B" ±.08" ±2 mm	FLANGE TYPE	GAUGE PORT OPTIONS	FLOW CAPACITY	OPTIONAL ITEM
26-17	6 - 316L Stainless Steel	7 - 5-500 psig 0.34-34.5 bar	K - DN 15 L - DN 20 M - DN 25	5.12 130 5.90 150 6.30 160	3.74 95 4.13 105 4.53 115	B - Form B - raised face D - Form D - ring joint	A - None F - 1/4" NPTF 1 x in G - 1/4" NPTF 1 x in L - 1/4" NPTF 1 x in, 1 x out	3 - $C_v = 0.14$	N - None

### Kits

	BASIC SERIES	PART NUMBER
NON METALLIC	26-17XXFXXXXXX	389-1268
REPAIR	26-17XXFXXXXXX	389-6574