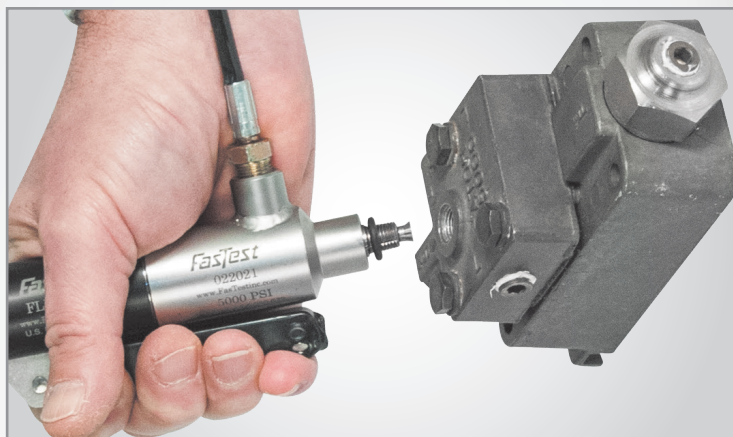
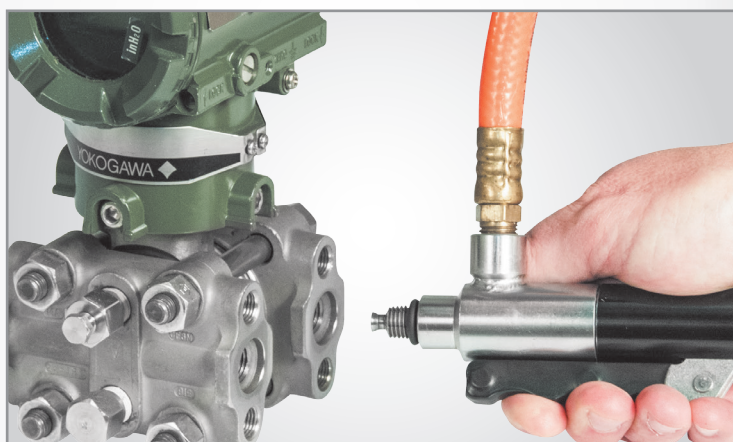


## FasMate® Quick Connectors Industry Applications:



- ✓ Manifolds, Engine Blocks, Transmissions, Brake and Steering Systems Testing



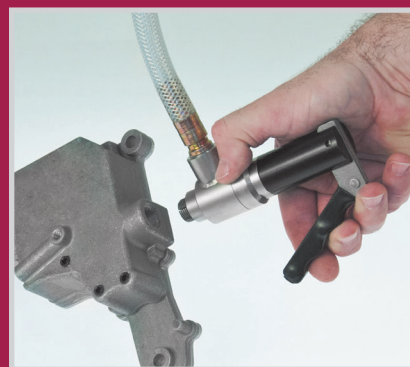
- ✓ Transmitters, Valves, Gauges and Instrumentation Calibration



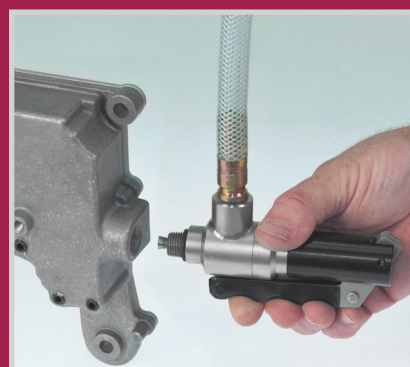
- ✓ Pressure Vessels, Pipes, Plumbing, Irrigation and Spray Systems Filling or Testing

**FasTest®**  
Your Connection Experts

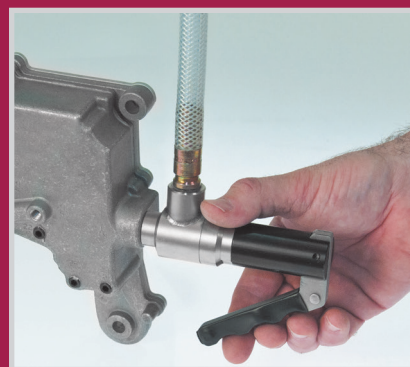
The **FasMate® Series** instantly seals threaded ports from vacuum up to 344.7 bar. The patented proprietary design makes sealing threaded ports as easy as 1, 2, 3.



- 1 Squeeze lever to collapse the threaded collets



- 2 Insert into threaded port



- 3 Releasing the lever expands the collets for a safe secure leak free connection

## Where to Buy



### **Purchase through local distributor**

- ➡ Factory authorized distributors provide local service and support across the U.S.A. and internationally.
- ➡ Contact your local distributor or visit:  
[www.fastestinc.com/en/distributorlocator](http://www.fastestinc.com/en/distributorlocator)

## Cost, Process and Quality Improvement

Since 1985, **FasTest, Inc.** has manufactured quick test connectors and valves that maximize efficiency, productivity and profitability for the Industrial Manufacturing, HVAC-R and Compressed Gas Industries.

Relying on our core engineering skills, FasTest has secured over 50 US and International patents. These patents serve as the design platform for innovative products that enable our customers to improve testing, manufacturing processes and productivity.

## Proudly Serving



# FasTest®

### Headquarters in USA

1646 Terrace Drive • Roseville, MN 55113-1317  
Phone: +1.651.645.6266  
Fax: +1.651.645.7390  
[www.fastestinc.com](http://www.fastestinc.com)

### Asia Office in Hong Kong

+852.2886.1650 • [asia@fastestinc.com](mailto:asia@fastestinc.com)

### Notifications and Copyright

Specifications in this brochure are subject to change without notice. FasTest also reserves the right to make modifications and makes no guarantee of the accuracy of the information contained herein.

FasTest is a registered trademark with the US Patent & Trademark Office.

© 2016 FasTest Inc. All rights reserved.

No part of this publication may be reproduced without written permission.

### Patents

FasTest Inc. takes pride in its innovative quick disconnect coupling solutions, many of which have been awarded United States and International patents. FasTest Inc. has a strong tradition of leadership in the quick disconnect market, and aggressively pursues and protects its proprietary information and intellectual property.

All products are designed and manufactured by Fastest Inc. USA.

### Limited Express Warranty

FasTest Inc. warrants its products against defects in workmanship and materials for 12 months from the date of sale by FasTest Inc. or its authorized distributor. This warranty is void if the product is misused, tampered with or used in a manner that is contrary to FasTest Inc.'s written recommendations and/or instructions.

See website for complete warranty information.

### Custom Applications

FasTest has full engineering and manufacturing capability to provide special accommodations to meet specific applications. Our engineers are available to review your unique application requirements.

### Certifications

FasTest Inc. is ISO 9001: 2008 certified.



## ***FasMate***<sup>®</sup> *Series*

- Eliminate thread damage, sealant and wrenches
- Safe and reliable connection to threads for up to 5000 psi (345 bar)
- Modular design for squeeze lever, push button, or pneumatic actuation
- Field serviceable without special tools, reduce maintenance cost and downtime



### ***Instant leak tight connection to threads for high volume production testing***

***FasTest's*** patented ***FasMate***<sup>®</sup> ***FN and FX Series*** connectors make instant leak tight connections that significantly decrease the time needed for pressure and vacuum testing, media filling or flushing and performance testing.

The split collet operation uses no thread sealant, wrenches and will not damage threads. ***FasMate's*** rugged design is ideal for production and is available in squeeze lever, push button and pneumatic actuation models.

# FasMate® Series - Instant Threaded Connections

FN: components with internal threads | FNR: components with internal threads with limited depth | FX: components with external threads



Lever Actuation

## The FasMate® Advantage

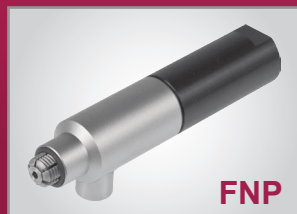
- **Safe and reliable connection to threads** for up to 345 bar (5000 psi)
- **Modular design** for squeeze lever, push button, or pneumatic actuation
- **Field serviceable without special tools**, reduce maintenance cost and downtime
- **Pressure assisted gripping** locks connector securely even under dynamic pressure
- **Ergonomic product**, reduce operator stress from repetitive motion
- **Rugged, durable construction** for demanding production environments

## Alternative Actuation Options

### Push-Button



### Pneumatic



## Technical Specifications

	FN Series	FX Series	FNR Series
Housing Material	Stainless steel and anodized aluminum		
Seal Material	Buna-N		
Connection Profile	Mates with NPT, Metric, BSPP, BSPT, and SAE threads		
Termination Profile	NPT or BSPP female thread port		
Operating Pressure	Vacuum to 344.7 bar (Body sizes 1 to 4) Vacuum to 241.3 bar (Body size 5) Vacuum to 51.7 bar (Thin walled pipe models)		Vacuum to 172.3 bar
Operating Temp.	-40°C to +121°C (-40°F to +250°F)		
Maximum Side Load Rating	1.4 – 5.65 Nm (12.5 – 50 in-lbs)	1.4 – 5.65 Nm (12.5 – 50 in-lbs)	1.06 - 3.18 Nm (9.38 - 28.13 in-lbs.)

### For FNV/FNP and FXV/FXP only:

Pilot Pressure	5.5 - 8 bar (80 - 120 psi)
Pilot Port Profile	1/8" female NPT

# FasMate® - FN SERIES

## Connectors for Internal (Female) Threads

- Connects to Internal Threads  
 - Connects to External Threads

Part Number	Connection Profile	Term Profile	Body Size	Min. Insert Length (mm)
<b>NPT (per SAE J476 or ANSI B1.20)</b>				
FNL-022021	1/8" NPT	1/8" NPT	1	0.55 (14.0)
FNL-022025	1/8" NPT	1/8" BSPP	1	0.55 (14.0)
FNL-042041	1/4" NPT	1/4" NPT	2	0.67 (17.1)
FNL-042045	1/4" NPT	1/4" BSPP	2	0.67 (17.1)
FNL-062061	3/8" NPT	3/8" NPT	3	0.67 (17.1)
FNL-062065	3/8" NPT	3/8" BSPP	3	0.67 (17.1)
FNL-082081	1/2" NPT	1/2" NPT	4	0.76 (19.4)
FNL-082085	1/2" NPT	1/2" BSPP	4	0.76 (19.4)
FNL-122121	3/4" NPT	3/4" NPT	5	0.63 (16.0)
FNL-122125	3/4" NPT	3/4" BSPP	5	0.63 (16.0)
<b>ISO O-Ring Metric (per ISO 6149 or SAE J2244)</b>				
FNL-108021	M10 × 1.0	1/8" NPT	1	0.55 (14.0)
FNL-108025	M10 × 1.0	1/8" BSPP	1	0.55 (14.0)
FNL-128041	M12 × 1.5	1/4" NPT	2	0.67 (17.1)
FNL-128045	M12 × 1.5	1/4" BSPP	2	0.67 (17.1)
FNL-148041	M14 × 1.5	1/4" NPT	2	0.67 (17.1)
FNL-148045	M14 × 1.5	1/4" BSPP	2	0.67 (17.1)
FNL-168061	M16 × 1.5	3/8" NPT	3	0.67 (17.1)
FNL-168065	M16 × 1.5	3/8" BSPP	3	0.67 (17.1)
FNL-188061	M18 × 1.5	3/8" NPT	4	0.76 (19.4)
FNL-188065	M18 × 1.5	3/8" BSPP	4	0.76 (19.4)
FNL-208061	M20 × 1.5	3/8" NPT	4	0.76 (19.4)
FNL-208065	M20 × 1.5	3/8" BSPP	4	0.76 (19.4)
FNL-228081	M22 × 1.5	1/2" NPT	4	0.76 (19.4)
FNL-228085	M22 × 1.5	1/2" BSPP	4	0.76 (19.4)

### Note:

Connectors can be quickly adapted to lever, pneumatic or thumb valve actuation for all FN models.

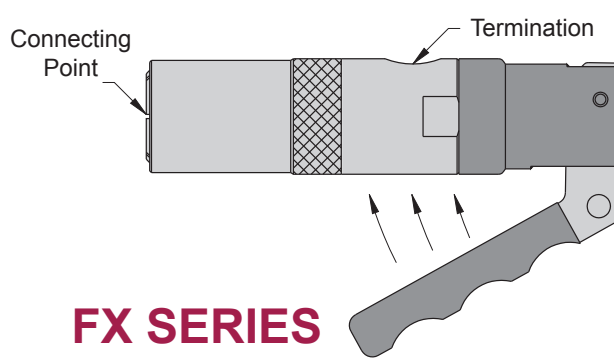
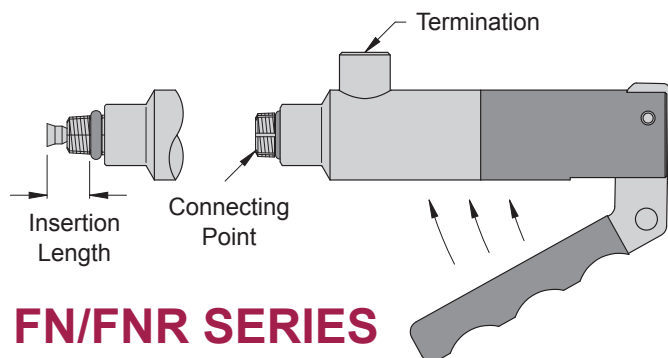
FXL and FXV are also interchangeable. (FXP is excluded).

Part Number	Connection Profile	Term Profile	Body Size	Min. Insert Length (mm)
<b>SAE O-Ring (per SAE J1926 or ISO 11926)</b>				
FNL-044021	-4 (7/16-20)	1/8" NPT	1	0.55 (14.0)
FNL-044025	-4 (7/16-20)	1/8" BSPP	1	0.55 (14.0)
FNL-054041	-5 (1/2-20)	1/4" NPT	2	0.67 (17.1)
FNL-054045	-5 (1/2-20)	1/4" BSPP	2	0.67 (17.1)
FNL-064041	-6 (9/16-18)	1/4" NPT	3	0.67 (17.1)
FNL-064045	-6 (9/16-18)	1/4" BSPP	3	0.67 (17.1)
FNL-084061	-8 (3/4-16)	3/8" NPT	4	0.76 (19.4)
FNL-084065	-8 (3/4-16)	3/8" BSPP	4	0.76 (19.4)
FNL-104081	-10 (7/8-14)	1/2" NPT	4	0.76 (19.4)
FNL-104085	-10 (7/8-14)	1/2" BSPP	4	0.76 (19.4)
FNL-124121	-12 (1 1/16-12)	3/4" NPT	5	0.63 (16.0)
<b>BSPP (per ISO 228 or BS 2779)</b>				
FNL-026021	1/8" BSPP	1/8" NPT	1	0.55 (14.0)
FNL-026025	1/8" BSPP	1/8" BSPP	1	0.55 (14.0)
FNL-046041	1/4" BSPP	1/4" NPT	2	0.67 (17.1)
FNL-046045	1/4" BSPP	1/4" BSPP	2	0.67 (17.1)
FNL-066061	3/8" BSPP	3/8" NPT	3	0.67 (17.1)
FNL-066065	3/8" BSPP	3/8" BSPP	3	0.67 (17.1)
FNL-086081	1/2" BSPP	1/2" NPT	4	0.76 (19.4)
FNL-086085	1/2" BSPP	1/2" BSPP	4	0.76 (19.4)
FNL-126121	3/4" BSPP	3/4" NPT	5	0.63 (16.0)
FNL-126125	3/4" BSPP	3/4" BSPP	5	0.63 (16.0)
<b>BSPT (per ISO 7 or BS 21)</b>				
FNL-026T025	1/8" BSPT	1/8" BSPP	1	0.55 (14.0)
FNL-046T045	1/4" BSPT	1/4" BSPP	2	0.67 (17.1)
FNL-066T065	3/8" BSPT	3/8" BSPP	3	0.67 (17.1)
FNL-086T085	1/2" BSPT	1/2" BSPP	4	0.76 (19.4)
FNL-126T125	3/4" BSPT	3/4" BSPP	5	0.63 (16.0)

Substitute "V" or "P" for actuation options:

Thumb Valve = FNV-082085

Automated Pneumatic = FNP-082085



## FasMate® - FNR SERIES

Connectors for Internal Reduced Insertion

Part Number	Connection Profile	Term Profile	Body Size	Min. Insert Length †
<b>NPT: Per SAE J476a, ANSI B1.20</b>				
FNLR-022021	1/8" NPT	1/8" NPT	1	0.30 (7.6)
FNLR-022025	1/8" NPT	1/8" BSPP	1	0.30 (7.6)
FNLR-042041	1/4" NPT	1/4" NPT	2	0.39 (9.9)
FNLR-042045	1/4" NPT	1/4" BSPP	2	0.39 (9.9)
FNLR-062061	3/8" NPT	3/8" NPT	3	0.47 (11.9)
FNLR-062065	3/8" NPT	1/4" BSPP	3	0.47 (11.9)
<b>SAE O-Ring Boss: Per SAE J1926, ISO 11926</b>				
FNLR-034021	-3 (3/8-24)	1/8" NPT	1	0.34 (8.6)
FNLR-034025	-3 (3/8-24)	1/8" BSPP	1	0.34 (8.6)
FNLR-044K021	-4 (7/16-24)	1/8" NPT	1	0.37 (9.4)
FNLR-044K025	-4 (7/16-24)	1/8" BSPP	1	0.37 (9.4)
FNLR-044021	-4 (7/16-20)	1/8" NPT	1	0.34 (8.6)
FNLR-044025	-4 (7/16-20)	1/8" BSPP	1	0.34 (8.6)
FNLR-054041	-5 (1/2-20)	1/4" NPT	2	0.39 (9.9)
FNLR-054045	-5 (1/2-20)	1/4" BSPP	2	0.39 (9.9)
FNLR-064041	-6 (9/16-18)	1/4" NPT	3	0.41 (10.4)
FNLR-064045	-6 (9/16-18)	1/4" BSPP	3	0.41 (10.4)
<b>Metric (aka M, ISO O-Ring Boss): Per SAE J2244, ISO 6149, DIN 3852 Part 1</b>				
FNLR-108021	M10 × 1.0	1/8" NPT	1	0.27 (6.9)
FNLR-108025	M10 × 1.0	1/8" BSPP	1	0.27 (6.9)
FNLR-108D021	M10 × 1.25	1/8" NPT	1	0.32 (8.1)
FNLR-108D025	M10 × 1.25	1/8" BSPP	1	0.32 (8.1)
FNLR-108E021	M10 × 1.5	1/8" NPT	1	0.34 (8.6)
FNLR-108E025	M10 × 1.5	1/8" BSPP	1	0.34 (8.6)
FNLR-128C041	M12 × 1.0	1/4" NPT	2	0.38 (9.7)
FNLR-128C045	M12 × 1.0	1/4" BSPP	2	0.38 (9.7)
FNLR-128D041	M12 × 1.25	1/4" NPT	2	0.38 (9.7)
FNLR-128D045	M12 × 1.25	1/4" BSPP	2	0.38 (9.7)
FNLR-128041	M12 × 1.5	1/4" NPT	2	0.40 (10.2)
FNLR-128045	M12 × 1.5	1/4" BSPP	2	0.40 (10.2)
FNLR-148041	M14 × 1.5	1/4" NPT	2	0.43 (10.9)
FNLR-148045	M14 × 1.5	1/4" BSPP	2	0.43 (10.9)
FNLR-168061	M16 × 1.5	3/8" NPT	3	0.43 (10.9)
FNLR-168065	M16 × 1.5	3/8" BSPP	3	0.43 (10.9)
<b>BSPP (aka G): Per ISO 228, BS 2779, DIN 3852 Part 2 Type A and B</b>				
FNLR-026021	1/8" BSPP	1/8" NPT	1	0.27 (6.9)
FNLR-026025	1/8" BSPP	1/8" BSPP	1	0.27 (6.9)
FNLR-046041	1/4" BSPP	1/4" NPT	2	0.39 (9.9)
FNLR-046045	1/4" BSPP	1/4" BSPP	2	0.39 (9.9)

## FasMate® - FX SERIES

Connectors for External (Male) Threads

Part Number	Connection Profile	Term Profile	Body Size
<b>NPT (per SAE J476 or ANSI B1.20)</b>			
FXL-021041	1/8" NPT	1/4" NPT	1
FXL-041041	1/4" NPT	1/4" NPT	1
FXL-061061	3/8" NPT	3/8" NPT	2
FXL-081061	1/2" NPT	3/8" NPT	2
<b>SAE 37° Flare (per SAE J514 or ISO 12151-5)</b>			
FXL-049041	-4 (7/16-20)	1/4" NPT	1
FXL-059041	-5 (1/2-20)	1/4" NPT	1
FXL-069041	-6 (9/16-18)	1/4" NPT	1
FXL-089061	-8 (3/4-16)	3/8" NPT	2
<b>SAE 45° Flare (per SAE J512 or J513)</b>			
FXL-04A041	-4 (7/16-20)	1/4" NPT	1
FXL-05A041	-5 (1/2-20)	1/4" NPT	1
FXL-06A061	-6 (5/8-18)	3/8" NPT	2
FXL-08A061	-8 (3/4-16)	3/8" NPT	2
<b>SAE O-Ring Face Seal (per SAE J1453)</b>			
FXL-009041	-4 (9/16-18)	1/4" NPT	1
FXL-011061	-6 (11/16-16)	3/8" NPT	2
FXL-013061	-8 (13/16-16)	3/8" NPT	2
<b>BSPP (per ISO 228 or BS 2279)</b>			
FXL-025041	1/8" BSPP	1/4" NPT	1
FXL-045041	1/4" BSPP	1/4" NPT	1
FXL-065061	3/8" BSPP	3/8" NPT	2
FXL-085061	1/2" BSPP	3/8" NPT	2
<b>BSPT (per ISO 7 or BS 21)</b>			
FXL-025T041	1/8" BSPT	1/4" NPT	1
FXL-045T041	1/4" BSPT	1/4" NPT	1
FXL-065T061	3/8" BSPT	3/8" NPT	2
FXL-085T061	1/2" BSPT	3/8" NPT	2
<b>NPT, For Thin Walled Pipe</b>			
FXL-061061PT	3/8" NPT	3/8" NPT	2
FXL-081061PT	1/2" NPT	3/8" NPT	2
<b>NPSM (per ASME B1.20.1)</b>			
FXL-04P041	1/4" NPSM	1/4" NPT	1

Substitute "V" or "P" for actuation options:

Thumb Valve = FXV-05A041

Automated Pneumatic = FXP-05A041

† Dimensions in inches (mm).