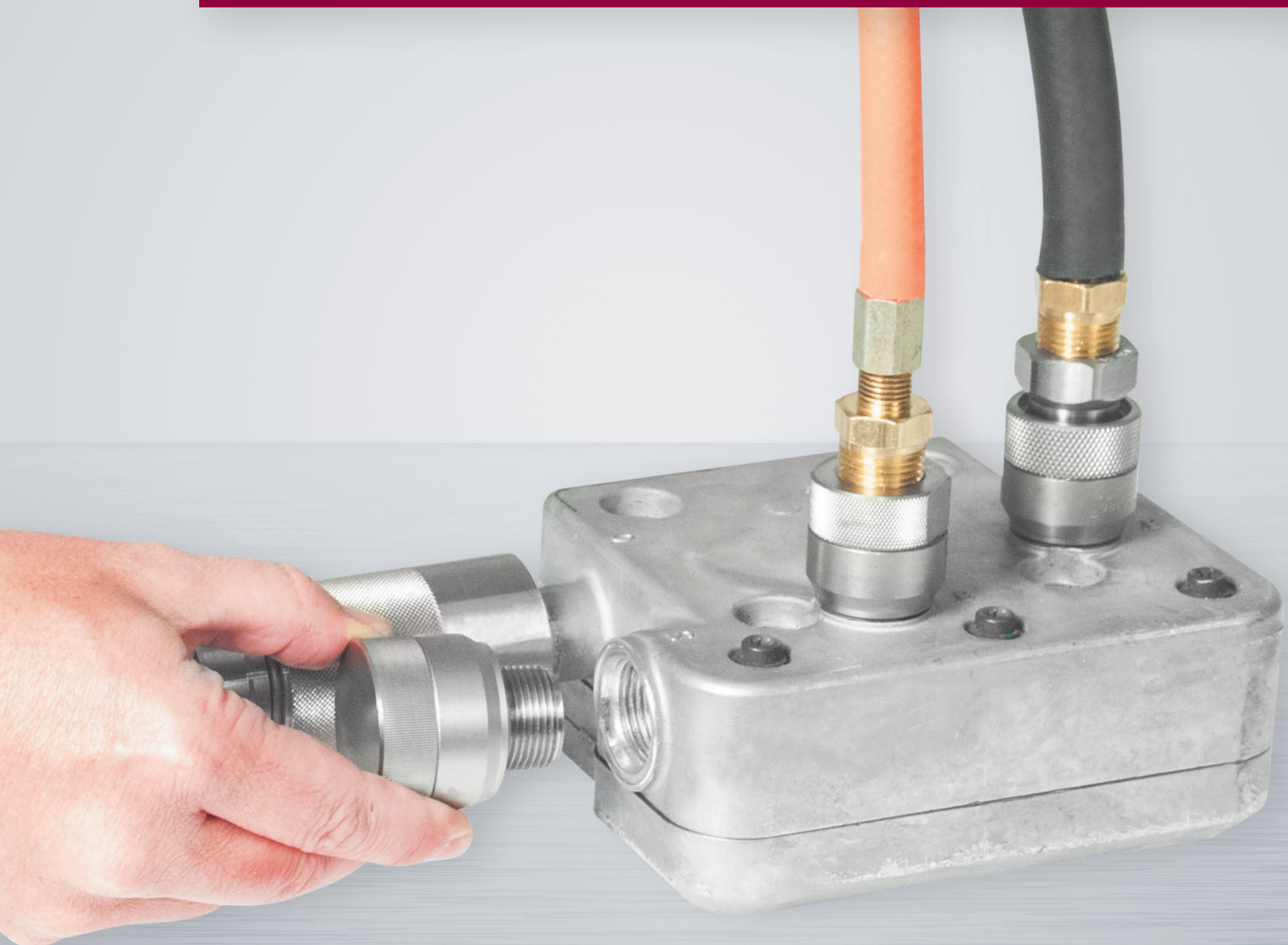


TwistMate[®]

- **Finger tighten** seals up to 689 bar (10,000 psi) for pneumatic and hydraulic testing
- **Safe and Reliable** leak tight connections to male and female threads
- **Eliminate** thread damage, sealant and wrenches
- **Durable** stainless steel construction available in multiple thread types



Quick Sealing with a “Twist to Connect” Actuation Method

The **TwistMate** family of products use an innovative “*twist to connect*”, pressure assisted grip and seal technology to deliver a fast, safe and repeatable connection to male and female threads. This sealing method creates an improved seal as pressures increase and eliminates the traditional sealing methods using tape and wrenches that frequently damage threads.



Your Productivity Connection

Cost, Process and Quality Improvement

Since 1985, **FasTest, Inc.** has manufactured quick test connectors and valves that maximize efficiency, productivity and profitability for the Industrial Manufacturing, HVAC-R and Compressed Gas Industries.

Relying on our core engineering skills, FasTest has secured over 50 US and International patents. These patents serve as the design platform for innovative products that enable our customers to improve testing, manufacturing processes and productivity.

FasTest connector benefits:

- Quick temporary, leak tight connections, which are consistent and repeatable and standardize operational processes
- Reliable and secure connections under dynamic high pressure conditions
- Increase production throughput and quality while dramatically reducing operating costs
- Eliminate testing bottlenecks, ideal for automation to accommodate high volume production testing
- Ready-to-use tools, so no more jury-rigged or homemade devices that are often leaky, inadequate and cumbersome
- Wide range of standard and custom products for different connection profiles

Widely used in:

- Manufacturing leak test, including pressure decay, tracer gas, mass spectrometer
- Pressure or vacuum tests of gauges, metrological transmitters
- Rapid filling or discharge of coolant in refrigeration systems

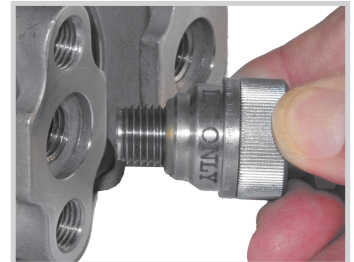
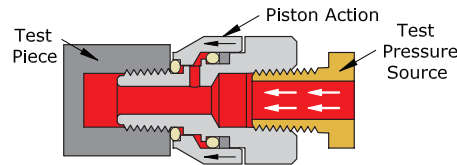
TwistMate® - Threaded Connectors

Quick Leak Tight Connection to Male and Female Threads

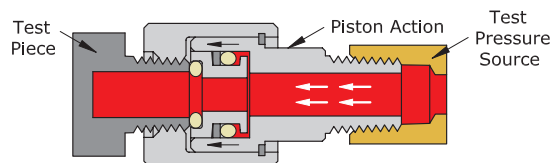
How to Operate

Spin connectors into or over threads until seal makes contact, apply test pressure

MIT - Internal Threads



MET - External Threads



Features	Benefits
Twist to connect	Lower cost solution, ideal for smaller volume production
Pressure assisted grip and seal	Sealing to test piece improves as vacuum or pressure are applied
No wrench tightening, thread damage, tape or sealant	Reduces wear on test piece and prevents contamination of media
Intuitive design and precise engineering	Easy to use, no operator adjustment necessary, sealing with no guesswork
Rugged, durable construction	Endures demanding production environments
Easy service of parts without special tools	Field serviceable, reduces operational cost and maintenance down time

Technical Specifications

Housing Material	Stainless steel
Seal Material	Urethane, Neoprene or Buna N
Connection Profiles	Mates with NPT, SAE O-Ring Boss, 37° and 45° Flare, Metric, BSPP and BSPT
Termination Profiles	NPT, SAE 37° Flare and BSPP
Operating Pressures	Vacuum to 689 Bar (10,000 psi)
Operating Temperature	-40°C to 93°C (-40°F to 200°F)

Specifications, Parts and Accessories

For complete dimensions, seals, repair kits and accessories, visit www.fastestinc.com and enter part number into search field.

For ordering information or technical support, contact **FasTest** or your local distributor.

Part Number Key

Model				Special Options			
MIT H - 04 2 04 1 X -				Blank = None PT = For thin walled pipe threads			
Optional Configurations				Seal Material			
Blank = Standard C = For curved surfaces H = High pressure				Blank = Standard seal B = Buna-N E = EPDM N = Neoprene S = Silicone U = Urethane V = Viton			
Thread Size †	NPT BSPP/BSPT	SAE	Metric	Connector Configuration			
02	1/8	--	--	Blank = Swivel style X = Non-Swivel connector			
03	--	3/8-24	--				
04	1/4	7/16-20	--				
05	--	1/2-20	--				
06	3/8	9/16-18 or 5/8-18	--				
08	1/2	3/4-16	--				
10	--	7/8-14	M10 x 1				
12	3/4	1 1/16-12	M12 x 1				
14	--	1 3/16-12	M14 x 1				
161	1 5/16-12	M16 x 1				
18	--	--	M18 x 1.5				
20	1-1/4	1 5/8-12	M20 x 1.5				
22	--	--	M22 x 1.5				
24	1-1/2	1 7/8-12	--				
322	--	--				
402-1/2	--	--				
483	--	--				
644	--	--				

† First two numbers (04) represent connection thread size, the 4th and 5th numbers (04) represent termination thread size.

Notes:

Part Number Keys are to assist in IDENTIFICATION ONLY.
 Verify new part numbers with factory; some configurations are not possible.



Thread Standards

- NPT:** Per SAE J476a, ANSI B1.20
- SAE O-Ring Boss:** Per SAE J1926, ISO 11926
- SAE 37° Flare:** Per SAE J514, ISO 12151-5
- SAE 45° Flare:** Per SAE J512 or J513
- BSPP (aka G):** Per ISO 228, BS 2779, DIN 3852 Part 2 Type A and B
- BSPT:** Per ISO 7, BS 21, DIN 3852 Part 2 Type C
- Metric (aka M, ISO O-Ring Boss):** Per SAE J2244, ISO 6149, DIN 3852 Part 1

TwistMate Repair Kits

- Swivel Style Repair Kits**
 2 internal O-rings, 2 backup rings and 1 snap ring.
- Non-Swivel Style Repair Kits**
 1 internal O-ring and 1 backup ring.
- Repair kits do not include main seal replacement.
- For additional kits consult factory.

MIT Connectors for Internal (Female) Threads

Part Number	Connection Profile	Termination Profile	Rated bar (psi)
NPT, Swivel			
MIT-022021	1/8" NPT	1/8" NPT	345 (5000)
MIT-042021	1/4" NPT	1/8" NPT	345 (5000)
MIT-042041	1/4" NPT	1/4" NPT	345 (5000)
MIT-062021	3/8" NPT	1/8" NPT	275 (4000)
MIT-062061	3/8" NPT	3/8" NPT	275 (4000)
MIT-082021	1/2" NPT	1/8" NPT	275 (4000)
MIT-082081	1/2" NPT	1/2" NPT	275 (4000)
MIT-122121	3/4" NPT	3/4" NPT	275 (4000)
MIT-162161	1" NPT	1" NPT	275 (4000)
NPT, Non-Swivel			
MIT-022021X	1/8" NPT	1/8" NPT	345 (5000)
MITH-022021X	1/8" NPT	1/8" NPT	689 (10000)
MIT-042041X	1/4" NPT	1/4" NPT	345 (5000)
MITH-042041X	1/4" NPT	1/4" NPT	689 (10000)
MIT-062061X	3/8" NPT	3/8" NPT	275 (4000)
MITH-062061X	3/8" NPT	3/8" NPT	689 (10000)
MIT-082081X	1/2" NPT	1/2" NPT	275 (4000)
MITH-082081X	1/2" NPT	1/2" NPT	551 (8000)
MIT-122121X	3/4" NPT	3/4" NPT	275 (4000)
MITH-122121X	3/4" NPT	3/4" NPT	517 (7500)
MIT-162161X	1" NPT	1" NPT	275 (4000)
MITH-162161X	1" NPT	1" NPT	448 (6500)
MIT-202201X	1-1/4" NPT	1-1/4" NPT	275 (4000)
MIT-242241X	1-1/2" NPT	1-1/2" NPT	206 (3000)
MIT-322161X	2" NPT	1" NPT	172 (2500)
MIT-402161X	2-1/2" NPT	1" NPT	103 (1500)
MIT-482161X	3" NPT	1" NPT	103 (1500)
MIT-642161X	4" NPT	1" NPT	69 (1000)
IEC Transmitter Port, Swivel			
MIT-042021TM	1/4" IEC	1/8" NPT	345 (5000)
NPT, Non-Swivel for Curved Surfaces †			
MITC-022021X	1/8" NPT	1/8" NPT	345 (5000)
MITC-042041X	1/4" NPT	1/4" NPT	345 (5000)
NPT, Plug			
MIT-022P	1/8" NPT	n/a	345 (5000)
MIT-042P	1/4" NPT	n/a	345 (5000)
MIT-062P	3/8" NPT	n/a	275 (4000)
MIT-082P	1/2" NPT	n/a	275 (4000)
MIT-122P	3/4" NPT	n/a	275 (4000)
MIT-162P	1" NPT	n/a	275 (4000)

† MITC styles have a unique chamfer seal design for sealing on curved surfaces. See website for application details.

Part Number	Connection Profile	Termination Profile	Rated bar (psi)
SAE O-Ring Boss, Non-Swivel			
MIT-034021X	-3 (3/8-24)	1/8" NPT	345 (5000)
MIT-044021X	-4 (7/16-20)	1/8" NPT	345 (5000)
MITH-044021X	-4 (7/16-20)	1/8" NPT	689 (10,000)
MIT-054041X	-5 (1/2-20)	1/4" NPT	345 (5000)
MIT-064041X	-6 (9/16-18)	1/4" NPT	345 (5000)
MITH-064041X	-6 (9/16-18)	1/4" NPT	689 (10,000)
MIT-084081X	-8 (3/4-16)	1/2" NPT	275 (4000)
MITH-084081X	-8 (3/4-16)	1/2" NPT	551 (8000)
MIT-104081X	-10 (7/8-14)	1/2" NPT	275 (4000)
MITH-104081X	-10 (7/8-14)	1/2" NPT	517 (5700)
MIT-124121X	-12 (1 1/16-12)	3/4" NPT	275 (4000)
MITH-124121X	-12 (1 1/16-12)	3/4" NPT	517 (5700)
MIT-144161X	-14 (1 3/16-12)	1" NPT	275 (4000)
MITH-144161X	-14 (1 3/16-12)	1" NPT	482 (7000)
MIT-164161X	-16 (1 5/16-12)	1" NPT	275 (4000)
MITH-164161X	-16 (1 5/16-12)	1" NPT	482 (7000)
MIT-204201X	-20 (1 5/8-12)	1-1/4" NPT	275 (4000)
Metric, Swivel			
MIT-108025	M10 x 1.0	1/8" BSPP	345 (5000)
MIT-128045	M12 x 1.5	1/4" BSPP	345 (5000)
MIT-148045	M14 x 1.5	1/4" BSPP	345 (5000)
MIT-168065	M16 x 1.5	3/8" BSPP	275 (4000)
MIT-188065	M18 x 1.5	3/8" BSPP	275 (4000)
MIT-228085	M22 x 1.5	1/2" BSPP	275 (4000)
Metric, Non-Swivel			
MIT-108021X	M10 x 1.0	1/8" NPT	345 (5000)
MIT-128041X	M12 x 1.5	1/4" NPT	345 (5000)
MIT-148041X	M14 x 1.5	1/4" NPT	345 (5000)
MIT-168061X	M16 x 1.5	3/8" NPT	275 (4000)
MIT-188061X	M18 x 1.5	3/8" NPT	275 (4000)
MIT-228081X	M22 x 1.5	1/2" NPT	275 (4000)
Metric, Plug			
MIT-108P	M10 x 1.0	n/a	345 (5000)
MIT-128P	M12 x 1.5	n/a	345 (5000)
MIT-148P	M14 x 1.5	n/a	345 (5000)
MIT-168P	M16 x 1.5	n/a	275 (4000)
MIT-188P	M18 x 1.5	n/a	275 (4000)
MIT-228P	M22 x 1.5	n/a	275 (4000)

Notes:
MIT swivel styles allow one end of the connector to spin while terminated to a pressure source which makes connections easier and faster; MIT non-swivel styles do not have this feature.

See part number key or website for additional connector details.

- Connects to Internal Threads

- Connects to External Threads

MIT Connectors for Internal (Female) Threads

Part Number	Connection Profile	Termination Profile	Rated psi (bar)
BSPP, Swivel			
MIT-026021	1/8" BSPP	1/8" NPT	345 (5000)
MIT-026025	1/8" BSPP	1/8" BSPP	345 (5000)
MIT-046021	1/4" BSPP	1/8" NPT	345 (5000)
MIT-046041	1/4" BSPP	1/4" NPT	345 (5000)
MIT-046045	1/4" BSPP	1/4" BSPP	345 (5000)
MIT-066021	3/8" BSPP	1/8" NPT	275 (4000)
MIT-066061	3/8" BSPP	3/8" NPT	275 (4000)
MIT-066065	3/8" BSPP	3/8" BSPP	275 (4000)
MIT-086021	1/2" BSPP	1/8" NPT	275 (4000)
MIT-086081	1/2" BSPP	1/2" NPT	275 (4000)
MIT-086085	1/2" BSPP	1/2" BSPP	275 (4000)
MIT-126125	3/4" BSPP	3/4" BSPP	275 (4000)
MIT-166165	1" BSPP	1" BSPP	275 (4000)
BSPP, Non-Swivel			
MIT-026025X	1/8" BSPP	1/8" BSPP	345 (5000)
MIT-046045X	1/4" BSPP	1/4" BSPP	345 (5000)
MIT-066065X	3/8" BSPP	3/8" BSPP	275 (4000)
MIT-086085X	1/2" BSPP	1/2" BSPP	275 (4000)
MIT-126121X	3/4" BSPP	3/4" NPT	275 (4000)
MIT-126125X	3/4" BSPP	3/4" BSPP	275 (4000)
MIT-166161X	1" BSPP	1" NPT	275 (4000)
MIT-166165X	1" BSPP	1" BSPP	275 (4000)
BSPP, Plug			
MIT-026P	1/8" BSPP	n/a	275 (4000)
MIT-046P	1/4" BSPP	n/a	275 (4000)
MIT-066P	3/8" BSPP	n/a	275 (4000)
MIT-086P	1/2" BSPP	n/a	275 (4000)
MIT-126P	3/4" BSPP	n/a	275 (4000)
MIT-166P	1" BSPP	n/a	275 (4000)

Part Number	Connection Profile	Termination Profile	Rated psi (bar)
BSPT, Swivel			
MIT-026T021	1/8" BSPT	1/8" NPT	345 (5000)
MIT-026T025	1/8" BSPT	1/8" BSPP	345 (5000)
MIT-046T021	1/4" BSPT	1/8" NPT	345 (5000)
MIT-046T041	1/4" BSPT	1/4" NPT	345 (5000)
MIT-046T045	1/4" BSPT	1/4" BSPP	345 (5000)
MIT-066T021	3/8" BSPT	1/8" NPT	275 (4000)
MIT-066T061	3/8" BSPT	3/8" NPT	275 (4000)
MIT-066T065	3/8" BSPT	3/8" BSPP	275 (4000)
MIT-086T021	1/2" BSPT	1/8" NPT	275 (4000)
MIT-086T081	1/2" BSPT	1/2" NPT	275 (4000)
MIT-086T085	1/2" BSPT	1/2" BSPP	275 (4000)
MIT-126T125	3/4" BSPT	3/4" BSPP	275 (4000)
MIT-166T165	1" BSPT	1" BSPP	275 (4000)
BSPT, Non-Swivel			
MIT-026T025X	1/8" BSPT	1/8" BSPP	345 (5000)
MIT-046T045X	1/4" BSPT	1/4" BSPP	345 (5000)
MIT-066T065X	3/8" BSPT	3/8" BSPP	275 (4000)
MIT-086T085X	1/2" BSPT	1/2" BSPP	275 (4000)
MIT-126T121X	3/4" BSPT	3/4" NPT	275 (4000)
MIT-126T125X	3/4" BSPT	3/4" BSPP	275 (4000)
MIT-166T161X	1" BSPT	1" NPT	275 (4000)
MIT-166T165X	1" BSPT	1" BSPP	275 (4000)
BSPT, Plug			
MIT-026TP	1/8" BSPT	n/a	345 (5000)
MIT-046TP	1/4" BSPT	n/a	345 (5000)
MIT-066TP	3/8" BSPT	n/a	275 (4000)
MIT-086TP	1/2" BSPT	n/a	275 (4000)
MIT-126TP	3/4" BSPT	n/a	275 (4000)
MIT-166TP	1" BSPT	n/a	275 (4000)

Notes:

MIT swivel styles allow one end of the connector to spin while terminated to a pressure source which makes connections easier and faster; MIT non-swivel styles do not have this feature.

See part number key or website for additional connector details.

 - Connects to Internal Threads  - Connects to External Threads

MET Connectors for External (Male) Threads

Part Number	Connection Profile	Termination Profile	Rated psi (bar)
NPT, Swivel			
MET-021021	1/8" NPT	1/8" NPT	345 (5000)
MET-021022	1/8" NPT	1/8" NPT*	345 (5000)
METH-021022	1/8" NPT	1/8" NPT*	689 (10,000)
MET-041021	1/4" NPT	1/8" NPT	345 (5000)
MET-041042	1/4" NPT	1/4" NPT*	345 (5000)
METH-041042	1/4" NPT	1/4" NPT*	551 (8000)
MET-061021	3/8" NPT	1/8" NPT	275 (4000)
MET-061062	3/8" NPT	3/8" NPT*	275 (4000)
METH-061062	3/8" NPT	3/8" NPT*	551 (8000)
MET-081021	1/2" NPT	1/8" NPT	275 (4000)
MET-081082	1/2" NPT	1/2" NPT*	275 (4000)
METH-081082	1/2" NPT	1/2" NPT*	413 (6000)
MET-121122	3/4" NPT	3/4" NPT*	275 (4000)
METH-121122	3/4" NPT	3/4" NPT*	345 (5000)
MET-161162	1" NPT	1" NPT*	275 (4000)
METH-161162	1" NPT	1" NPT*	345 (5000)
MET-201202	1-1/4" NPT	1-1/4" NPT*	172 (2000)
MET-241161	1-1/2" NPT	1" NPT	68 (1000)
MET-321161	2" NPT	1" NPT	31 (750)
MET-401161	2-1/2" NPT	1" NPT	34 (500)
MET-481161	3" NPT	1" NPT	34 (500)
NPT, Swivel for Thin Walled Pipes †			
MET-041042-PT	1/4" NPT	1/4" NPT*	31 (750)
MET-061062-PT	3/8" NPT	3/8" NPT*	31 (750)
MET-081082-PT	1/2" NPT	1/2" NPT*	31 (750)
MET-121122-PT	3/4" NPT	3/4" NPT*	31 (750)
MET-161162-PT	1" NPT	1" NPT*	31 (750)
MET-201202-PT	1-1/4" NPT	1-1/4" NPT*	31 (750)
MET-241161††	1-1/2" NPT	1" NPT	31 (750)
MET-321161	2" NPT	1" NPT	31 (750)
MET-401161	2-1/2" NPT	1" NPT	34 (500)
MET-481161	3" NPT	1" NPT	34 (500)
NPT, Cap			
MET-021C	1/8" NPT	n/a	345 (5000)
MET-041C	1/4" NPT	n/a	345 (5000)
MET-061C	3/8" NPT	n/a	275 (4000)
MET-081C	1/2" NPT	n/a	275 (4000)

* Designates male threads.

† Connectors for Schedule 40 pipe.

†† Connector pressure rating reduced from 1000 to 750 psi for thin walled (Schedule 40) threaded pipe applications.

Note:

See part number key or website for additional connector details.

Part Number	Connection Profile	Termination Profile	Rated psi (bar)
SAE 37° Flare, Swivel			
MET-049021	-4 (7/16-20)	1/8" NPT	689 (10,000)
METH-049040	-4 (7/16-20)	-4 (7/16-20)*	689 (10,000)
MET-069021	-6 (9/16-18)	1/8" NPT	689 (10,000)
METH-069060	-6 (9/16-18)	-6 (9/16-18)*	689 (10,000)
MET-089021	-8 (3/4-16)	1/8" NPT	689 (10,000)
METH-089080	-8 (3/4-16)	-8 (3/4-16)*	689 (10,000)
METH-109100	-10 (7/8-14)	-10 (7/8-14)*	689 (10,000)
METH-129120	-12 (1 1/16-12)	-12 (1 1/16-12)*	689 (10,000)
MET-169120	-16 (1 5/16-12)	-12 (1 1/16-12)*	68 (1000)
MET-209160	-20 (1 5/8-12)	-16 (1 5/16-12)*	68 (1000)
MET-249200	-24 (1 7/8-12)	-20 (1 5/8-12)*	31 (750)
MET-329240	-32 (2 1/2-12)	-24 (1 7/8-12)*	31 (750)
SAE 45° Flare, Swivel			
MET-04A042B	-4 (7/16-20)	1/4" NPT*	345 (5000)
MET-06A062N	-6 (5/8-18)	3/8" NPT*	345 (5000)
MET-08A082N	-8 (3/4-16)	1/2" NPT*	275 (4000)
MET-10A082N	-10 (7/8-14)	1/2" NPT*	275 (4000)
MET-12A122N	-12 (1 1/16-14)	3/4" NPT*	275 (4000)
MIL Spec 18997, Swivel			
MET-06-18997-021	9/16-18 UNF	1/8" NPT	275 (4000)
BSPP, Swivel			
MET-025021	1/8" BSPP	1/8" NPT	345 (5000)
MET-025022	1/8" BSPP	1/8" NPT*	345 (5000)
MET-025025	1/8" BSPP	1/8" BSPP	345 (5000)
MET-045021	1/4" BSPP	1/8" NPT	345 (5000)
MET-045042	1/4" BSPP	1/4" NPT*	345 (5000)
MET-045045	1/4" BSPP	1/4" BSPP	345 (5000)
MET-065021	3/8" BSPP	1/8" NPT	275 (4000)
MET-065062	3/8" BSPP	3/8" NPT*	275 (4000)
MET-065065	3/8" BSPP	3/8" BSPP	275 (4000)
MET-085021	1/2" BSPP	1/8" NPT	275 (4000)
MET-085082	1/2" BSPP	1/2" NPT*	275 (4000)
MET-085085	1/2" BSPP	1/2" BSPP	275 (4000)
BSPP, Cap			
MET-025C	1/8" BSPP	n/a	345 (5000)
MET-045C	1/4" BSPP	n/a	345 (5000)
MET-065C	3/8" BSPP	n/a	275 (4000)
MET-085C	1/2" BSPP	n/a	275 (4000)

Connects to Internal Threads

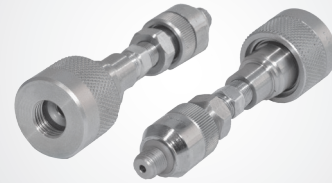
Connects to External Threads

MET Connectors for External (Male) Threads

Part Number	Connection Profile	Termination Profile	Rated psi (bar)
BSPT, Swivel			
MET-025T021	1/8" BSPT	1/8" NPT	345 (5000)
MET-025T022	1/8" BSPT	1/8" NPT*	345 (5000)
MET-025T025	1/8" BSPT	1/8" BSPP	345 (5000)
MET-045T021	1/4" BSPT	1/8" NPT	345 (5000)
MET-045T042	1/4" BSPT	1/4" NPT*	345 (5000)
MET-045T045	1/4" BSPT	1/4" BSPP	345 (5000)
MET-065T021	3/8" BSPT	1/8" NPT	275 (4000)
MET-065T062	3/8" BSPT	3/8" NPT*	275 (4000)
MET-065T065	3/8" BSPT	3/8" BSPP	275 (4000)
MET-085T021	1/2" BSPT	1/8" NPT	275 (4000)
MET-085T082	1/2" BSPT	1/2" NPT*	275 (4000)
MET-085T085	1/2" BSPT	1/2" BSPP	275 (4000)
BSPT, Cap			
MET-025TC	1/8" BSPT	n/a	345 (5000)
MET-045TC	1/4" BSPT	n/a	345 (5000)
MET-065TC	3/8" BSPT	n/a	275 (4000)
MET-085TC	1/2" BSPT	n/a	275 (4000)
Swagelok®, Compression Fittings, Swivel			
MET-CF04021	1/4" (7/16-20)	1/8" NPT	345 (5000)
MET-CF06021	3/8" (9/16-20)	1/8" NPT	275 (4000)
MET-CF08021	1/2" (3/4-20)	1/8" NPT	275 (4000)
Swagelok®, Compression Fittings, Cap			
MET-CF04C	1/4" (7/16-20)	n/a	345 (5000)
MET-CF06C	3/8" (9/16-20)	n/a	275 (4000)
MET-CF08C	1/2" (3/4-20)	n/a	275 (4000)
Ferulok®, Compression Fittings, Swivel			
MET-CF04021F	1/4" (7/16-20)	1/8" NPT	345 (5000)
MET-CF06021F	3/8" (9/16-18)	1/8" NPT	275 (4000)
MET-CF08021F	1/2" (3/4-16)	1/8" NPT	275 (4000)
Ferulok®, Compression Fittings, Cap			
MET-CF04CF	1/4" (7/16-20)	n/a	345 (5000)
MET-CF06CF	3/8" (9/16-18)	n/a	275 (4000)
MET-CF08CF	1/2" (3/4-16)	n/a	275 (4000)
SAE 37° Flare, Bench Step, Swivel			
MET-069040	-6 (9/16-18)	-4 (7/16-20)*	345 (5000)
MET-089060	-8 (3/4-16)	-6 (9/16-18)*	275 (4000)
MET-109080	-10 (7/8-14)	-8 (3/4-16)*	275 (4000)
MET-129100	-12 (1 1/16-12)	-10 (7/8-14)*	275 (4000)
MET-169120	-16 (1 5/16-12)	-12 (1 1/16-12)*	68 (1000)
MET-209160	-20 (1 5/8-12)	-16 (1 5/16-12)*	68 (1000)
MET-249200	-24 (1 7/8-12)	-20 (1 5/8-12)*	31 (750)
MET-329240	-32 (2 1/2-12)	-24 (1 7/8-12)*	31 (750)

Transition Adapters

MIT to MET Swivels



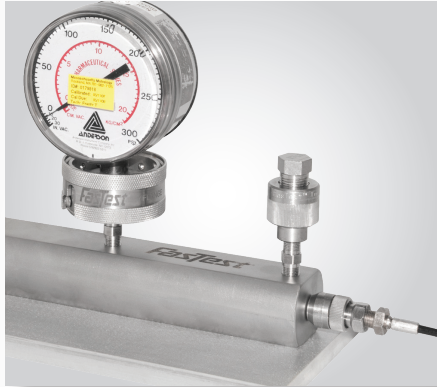
Part Number	Connection Profile	Termination Profile	Rated psi (bar)
NPT, Transition Adapters, Swivels			
MI022-ME021	1/8" NPT	1/8" NPT	345 (5000)
MI022-ME041	1/8" NPT	1/4" NPT	345 (5000)
MI022-ME061	1/8" NPT	3/8" NPT	275 (4000)
MI022-ME081	1/8" NPT	1/2" NPT	275 (4000)
MI042-ME021	1/4" NPT	1/8" NPT	345 (5000)
MI042-ME041	1/4" NPT	1/4" NPT	345 (5000)
MI042-ME061	1/4" NPT	3/8" NPT	275 (4000)
MI042-ME081	1/4" NPT	1/2" NPT	275 (4000)
BSPP, Transition Adapters, Swivels			
MI026-ME025	1/8" BSPP	1/8" BSPP	345 (5000)
MI026-ME045	1/8" BSPP	1/4" BSPP	345 (5000)
MI026-ME065	1/8" BSPP	3/8" BSPP	275 (4000)
MI026-ME085	1/8" BSPP	1/2" BSPP	275 (4000)
MI046-ME025	1/4" BSPP	1/8" BSPP	345 (5000)
MI046-ME045	1/4" BSPP	1/4" BSPP	345 (5000)
MI046-ME065	1/4" BSPP	3/8" BSPP	275 (4000)
MI046-ME085	1/4" BSPP	1/2" BSPP	275 (4000)
BSPT, Transition Adapters, Swivels			
MI026T-ME025T	1/8" BSPT	1/8" BSPT	345 (5000)
MI026T-ME045T	1/8" BSPT	1/4" BSPT	345 (5000)
MI026T-ME065T	1/8" BSPT	3/8" BSPT	275 (4000)
MI026T-ME085T	1/8" BSPT	1/2" BSPT	275 (4000)
MI046T-ME025T	1/4" BSPT	1/8" BSPT	345 (5000)
MI046T-ME045T	1/4" BSPT	1/4" BSPT	345 (5000)
MI046T-ME065T	1/4" BSPT	3/8" BSPT	275 (4000)
MI046T-ME085T	1/4" BSPT	1/2" BSPT	275 (4000)

*Designates male threads.

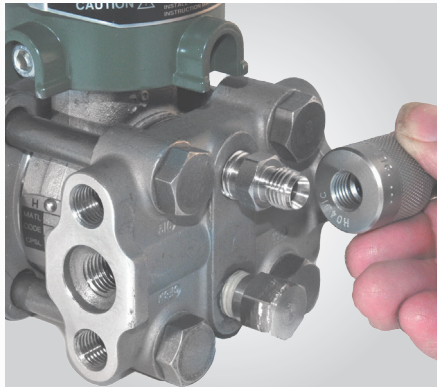
Note:

See part number key or website for additional connector details.

**TwistMate® Quick Connectors
Industry Applications:**



Simple manifolds, gauges
and threaded parts



Transmitters, valves and
instrumentation calibration



Pressure vessels, pipes
and plumbing

FasTest®

Headquarters in USA

1646 Terrace Drive • Roseville, MN 55113-1317

Phone: +1.651.645.6266

Fax: +1.651.645.7390

www.fastestinc.com

Notifications and Copyright

Specifications in this brochure are subject to change without notice. FasTest also reserves the right to make modifications and makes no guarantee of the accuracy of the information contained herein.

FasTest is a registered trademark with the US Patent & Trademark Office.

© 2016 FasTest Inc. All rights reserved.

No part of this publication may be reproduced without written permission.

Patents

FasTest Inc. takes pride in its innovative quick disconnect coupling solutions, many of which have been awarded United States and International patents. FasTest Inc. has a strong tradition of leadership in the quick disconnect market, and aggressively pursues and protects its proprietary information and intellectual property.

All products are designed and manufactured by FasTest Inc. USA

Limited Express Warranty

FasTest Inc. warrants its products against defects in workmanship and materials for 12 months from the date of sale by FasTest Inc. or its authorized distributor. This warranty is void if the product is misused, tampered with or used in a manner that is contrary to FasTest Inc.'s written recommendations and/or instructions.

See website for complete warranty information.

Custom Applications

FasTest has full engineering and manufacturing capability to provide special accommodations to meet specific applications. Our engineers are available to review your unique application requirements.

Certifications

FasTest Inc. is ISO 9001: 2008 certified.