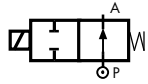


2/2 WAY DIRECT ACTING SOLENOID VALVE, G 1/8"



normally open

TYPE: RD213

TECHNICAL SPECIFICATIONS

- Media: water, oil, air
- Media temperature: $-10^{\circ}\text{C} \div +130^{\circ}\text{C}$
- Ambient temperature: $-10^{\circ}\text{C} \div +50^{\circ}\text{C}$
- Body material: brass (CW617N EN 12165)
- Operator material: stainless steel
- Seal material: foodgrade FKM
- Coil power: AC 18VA (holding)
AC 36VA (inrush)
DC 14w
- Protection class: IP 65 (with connector)

OPTIONS

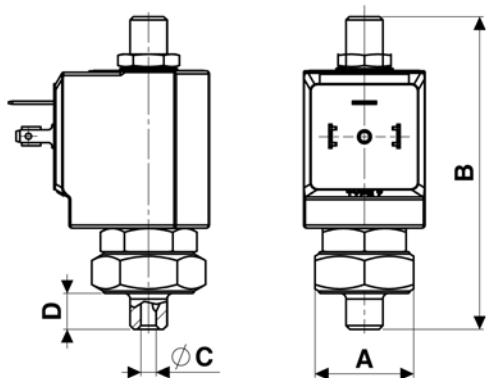
- EPDM seal for air and hot water MAX 120°C (e.g. code RD213CEG)
- Armature tube with spherical 1/8" G connection (e.g. code RD213AVG)



COMPRESSED AIR

SELECTION TABLE

VALVE	G connection	nominal diameter	flow rate Kvs	OPD			COILS	
				min	max AC	max DC	code	[Volts/Hz]
code	[ISO 228 G]	[mm]	[l/min]	[barg]	[barg]	[barg]	code	[Volts/Hz]
RD213CVG	1/8"	2.5	2.4	0	16	16	7250	24v DC
							7200	24v 50/60Hz
							7400	110v 50Hz - 120v 60Hz
							7600	200v 50Hz - 220v 60Hz
							7700	230v 50Hz - 240v 60Hz



DIMENSIONS & WEIGHTS

G connection	A	B	C	D	weight
[ISO 228 G]	[mm]	[mm]	[mm]	[mm]	[kg]
1/8"	Hex 26	82.5	4	9.5	--