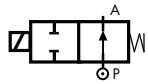


## 2/2 WAY DIRECT ACTING SOLENOID VALVE, G 1/4"



normally open

TYPE: RD236

### TECHNICAL SPECIFICATIONS

Media: water, oil, air
Media temperature: -10°C ÷ +130°C
Ambient temperature: -10°C ÷ +50°C
Body material: brass (CW617N EN 12165)
Orifice material: stainless steel (1.4305 EN 10088/AISI 303)
Operator material: stainless steel
Seal material: foodgrade FKM
Coil power: AC 18VA (holding)
AC 36VA (inrush)
DC 14w
Protection class: IP 65 (with connector)

### OPTIONS

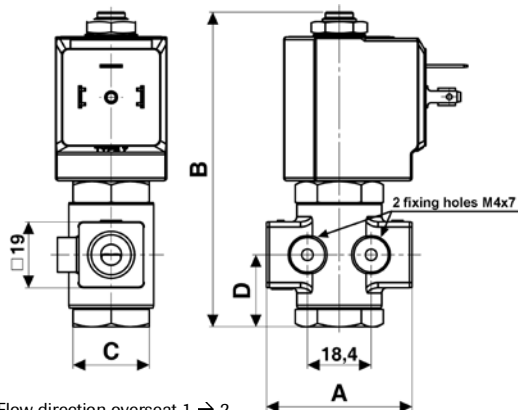
EPDM seal for air and hot water MAX 120°C (e.g. code RD236DEC)  
 High pressure version see page 28



COMPRESSED AIR

SELECTION TABLE

VALVE	G connection	nominal diameter	flow rate Kvs	OPD			COILS	
				min	max AC	max DC	code	[Volts/Hz]
code	[ISO 228 G]	[mm]	[l/min]	[barg]	[barg]	[barg]	code	[Volts/Hz]
RD236DVA	1/4"	1.0	0.5	0	25	25	7250	24v DC
RD236DVC	1/4"	1.5	1.3	0	20	20	7200	24v 50/60Hz
RD236DVG	1/4"	2.5	2.8	0	15	15	7400	110v 50Hz - 120v 60Hz
RD236DVH	1/4"	3.0	3.5	0	12	12	7600	200v 50Hz - 220v 60Hz
RD236DVM	1/4"	4.5	5.5	0	5	5	7700	230v 50Hz - 240v 60Hz



Flow direction overseat 1 → 2

DIMENSIONS & WEIGHTS

G connection	A	B	C	D	weight
[ISO 228 G]	[mm]	[mm]	[mm]	[mm]	[kg]
1/4"	42	91	Hex 22	20.75	0.25