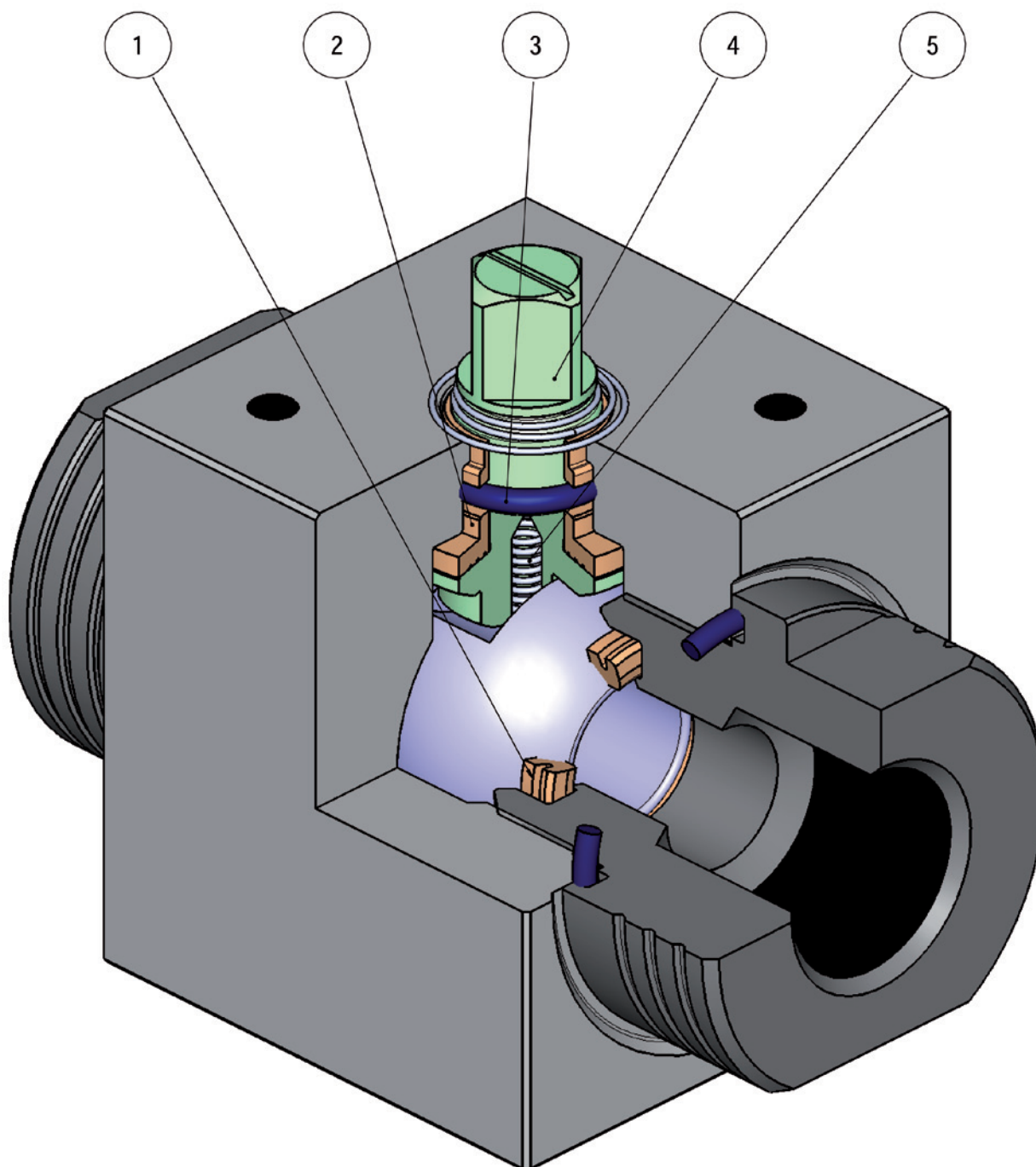


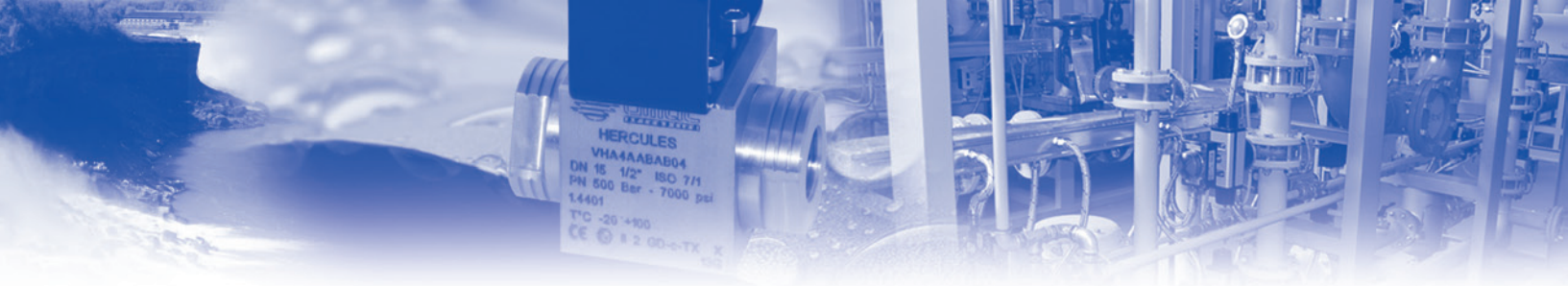


HERCULES- VALVOLA PER ALTA CICLICITÀ CON GUARNIZIONI IN PTFE-TFM1600

HERCULES - VALVE FOR HIGH CICLICITY WITH PTFE-TFM1600

Hercules Stainless steel
PTFE-TFM1600 seals





FEATURES & BENEFITS

1	Tenuta in "TFM1600" Seat in "TFM1600"	PTFE di seconda generazione con performance più elevate nella combinazione pressione/temperatura <i>2nd generation PTFE with higher performance in pressure and temperature diagram</i>
2	Supporto stelo in "TFM1600" "TFM1600" stem bush	Elevato numero di azionamenti <i>High number of cycles</i>
3	O-ring in elastomero da 90 Shore A <i>Elastomer O-Ring with a hardness of 90 Shore A</i>	Nessun deperimento dovuto ad azionamenti estremamente veloci <i>No deterioration with quick operations</i>
3	O-ring a bassa permeabilità "Rapid Gas Decompression" <i>Low-permeability O-ring "Rapid Gas Decompression"</i>	Buona resistenza alla decompressione esplosiva <i>Good resistance to explosive decompression</i>
4	Stelo in 17-4 PH <i>Stem in 17-4 PH</i>	Maggior resistenza meccanica di circa 5 volte rispetto ad un acciaio inox <i>Increased mechanical strenght about 5 times more compared to a standard stainless steel</i>
4	Rullatura stelo H900 Shaft rolling H900	Minor usura delle guarnizioni grazie alla bassa rugosità (0,4 micron Ra) dello stelo che facilita lo scorrimento <i>Less wear of the seals due to the low roughness (0,4 micron Ra) which facilitate the sliding of the shaft</i>
5	Antistatic device (continuità elettrica tra sfera, stelo e corpo) <i>Antistatic device (electrical continuity between ball, stem and body)</i>	Si evitano cariche elettrostatiche che potrebbero essere causa d'innesco in ambienti infiammabili e/o esplosivi <i>Static electricity is avoided which can cause sparks and fire in an inflammable/explosive environment</i>
		Sicurezza garantita del contatto durante tutta la vita della valvola <i>Contact safety throughout the entire life of the valve</i>
	Certificato PED <i>PED Certificate</i>	Piena conformità alle norme di sicurezza europee per i dispositivi in pressione (per DN > di 25) <i>Full compliance with European safety standards for pressure equipment (for DN> 25)</i>
	Fire safe design <i>Fire safe design</i>	Garantisce la tenuta della valvola anche in caso di incendio <i>Guarantees the tightness of the valve also in case of fire</i>
	Certificato ATEX <i>Atex Certificate</i>	Ne consente l'installazione in presenza di ambiente potenzialmente esplosivo <i>Installation is possible in a potential explosive environment</i>



HERCULES CON GUARNIZIONI IN PTFE-TFM1600 HERCULES WITH PTFE-TFM1600 SEATS

Valvola a sfera in acciaio inox - alta ciclicità
Stainless steel ball valve - high ciclicity



Hercules stainless steel
PTFE-TFM1600 seals

Caratteristiche generali:

Estremità filettate EN ISO 228 o NPT

Temperatura di utilizzo: da -30°C a +155°C

Pressione di utilizzo: 100bar/1500 psi DN6, DN8, DN10, DN15

63 bar/1000 psi DN20 e DN25

50bar/700 psi DN32 e DN40

40bar/600 psi DN50

Fluido intercettato: fluidi liquidi e gassosi chimicamente aggressivi se compatibili con i materiali costitutivi

Antistatic device

Fire safe design

General features

Threaded ends: EN ISO 228 o NPT

Working temperature: from -30°C to +155°C

Working pressure: DN6, DN8, DN10, DN15 100bar/1500 psi

DN20 e DN25 63 bar/1000 psi

DN32 e DN40 50bar/700 psi

DN50 40bar/600 psi

Intercepted fluid: liquid and gaseous fluids chemically aggressive if they are compatible with the construction materials

Antistatic device

Fire safe design

Esecuzioni speciali a richiesta:

Per altre applicazioni consultare il nostro ufficio tecnico

Special execution on request

For other applications, please contact our technical department

Certificazioni:

Versione ATEX in conformità alla direttiva 94/9/EC

Versione PED CE1115 per misure \geq DN32

Approvals:

ATEX version in conformity with directive 94/9/EC

PED CE1115 version for size \geq DN32

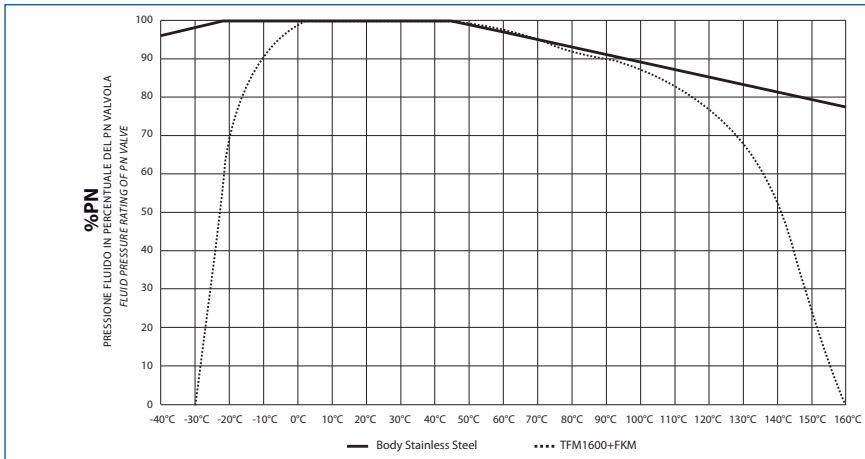
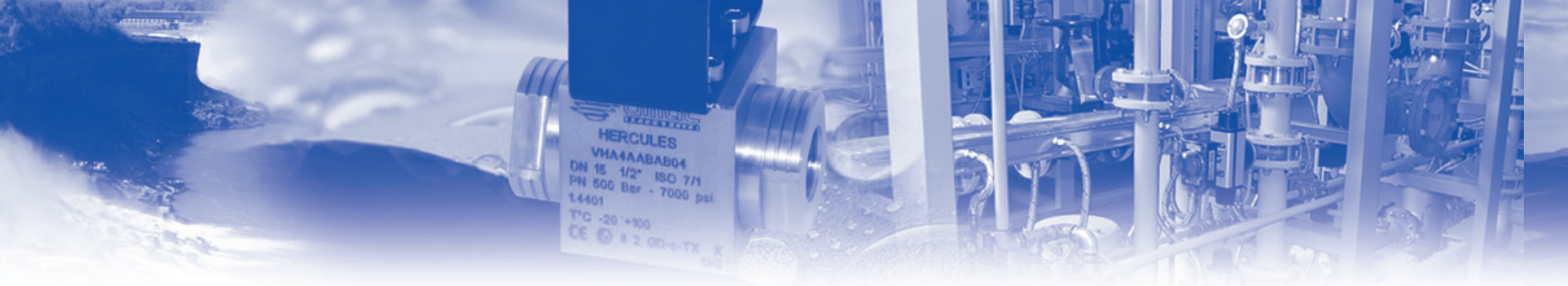
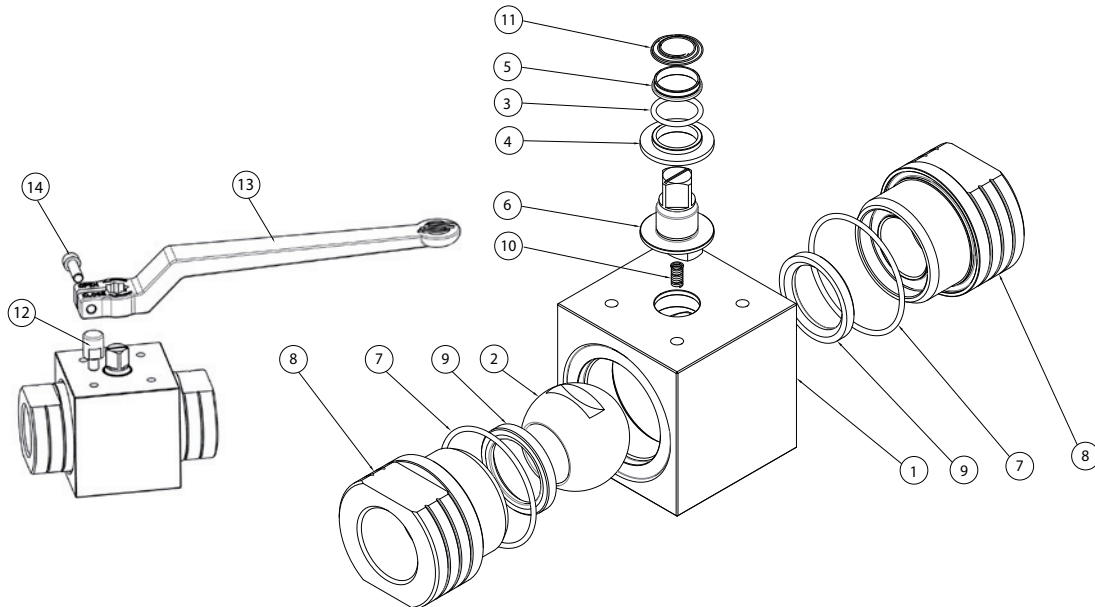


diagramma pressione/temperatura
pressure/temperature diagram

DN6, DN8, DN10, DN15	PN100/1500psi
DN20 e DN25	PN63/1000 psi
DN32 e DN40	PN50/700 psi
DN50	PN40/600 psi



Hercules Stainless steel
PTFE-TFM1600 seals

MATERIALI MATERIALS

1	Corpo <i>Body</i>	Inox 1.4401 / X5CrNiMo17-12-2
2	Sfera <i>Ball</i>	A351 CF8M
3	O-ring	FKM
4	Bussola inferiore <i>Lower bush</i>	PTFE-TFM1600
5	Bussola superiore <i>Upper bush</i>	PTFE-TFM1600
6	Stelo <i>Stem</i>	AISI630 (17-4 PH)
7	O-ring	FKM
8	Manicotto <i>Ends</i>	A182 F316 / A479 TP316
9	Seggio <i>Seats</i>	PTFE-TFM1600
10	Molla antistatic device <i>Antistatic device spring</i>	1.4310 - X12CrNi17-7
11	Molla antistatic device superiore <i>Upper antistatic device spring</i>	1.4310 - X12CrNi17-7
12	Fermo <i>Holder screw</i>	X5CrNiMo1713 - AISI316
13	Leva <i>Lever</i>	EN AB 46100 - AL SI 11 CU (FE) Nichelata - <i>Nickel coated</i>
14	Vite <i>Screw</i>	A2 - 70

COPPIE DI SPUNTO in Nm BREAK AWAY TORQUES Nm

misura <i>size</i>	DN 6 1/8"	DN8 1/4"	DN 10 3/8"	DN 15 1/2"	DN 20 3/4"	DN 25 1"	DN 32 1"1/4"	DN 40 1"1/2"	DN 50 2"
PN 100 Bar	10		17	20					
PN 63 Bar					31	39			
PN 50 Bar							60	81	
PN 40 Bar									125

PORTATA KV m³/h FLOW RATE KV m³/h

KV m ³ /h	5,2	11	20	60	100	130	170	280
----------------------	-----	----	----	----	-----	-----	-----	-----

Il valore Kv è il valore indice in m³/h (con acqua a 15°C) che provoca la caduta di pressione di 1 bar
Kv is the coefficient, expressed in m³/h (with water at 15°C) causing a pressure loss of 1 bar.

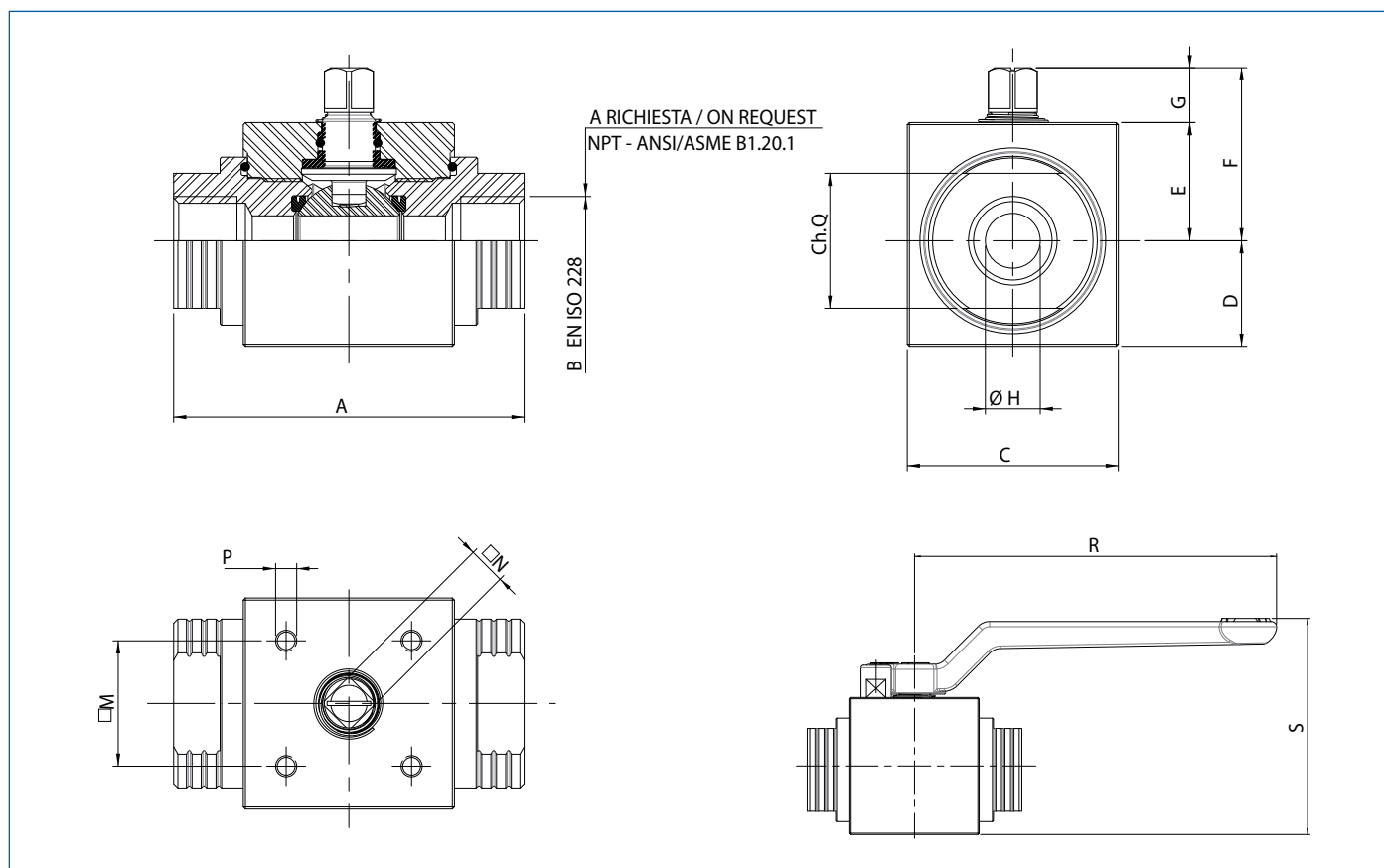


CODICI VALVOLA HERCULES - ASSE NUDO E CON LEVA HERCULES VALVE CODES - FREE SHAFT AND WITH LEVER

misura size	DN 6 1/8"	DN 8 1/4"	DN 10 3/8"	DN 15 1/2"	DN 20 3/4"	DN 25 1"	DN 32 1"1/4"	DN 40 1"1/2"	DN 50 2"
Asse libero Vers. ISO228 <i>Free shaft -ISO228 Version</i>	VHA4TCTFT01	VHA4TCTFT02	VHA4TCTFT03	VHA4TCTFT04	VHA4TCTFT05	VHA4TCTFT06	VHA4TCTFT07	VHA4TCTFT08	VHA4TCTFT09
Asse libero Vers. NPT <i>Free shaft -NPT Version</i>	VHA4TCTFT41	VHA4TCTFT42	VHA4TCTFT43	VHA4TCTFT44	VHA4TCTFT45	VHA4TCTFT46	VHA4TCTFT47	VHA4TCTFT48	VHA4TCTFT49
Con leva Vers. ISO228 <i>With lever -ISO228 version</i>	LHA4TCTFT01	LHA4TCTFT02	LHA4TCTFT03	LHA4TCTFT04	LHA4TCTFT05	LHA4TCTFT06	LHA4TCTFT07	LHA4TCTFT08	LHA4TCTFT09
Con leva Vers. NPT <i>With lever -NPT version</i>	LHA4TCTFT41	LHA4TCTFT42	LHA4TCTFT43	LHA4TCTFT44	LHA4TCTFT45	LHA4TCTFT46	LHA4TCTFT47	LHA4TCTFT48	LHA4TCTFT49
Kit leva <i>Lever kit</i>	KLVVH501	KLVVH501	KLVVH503	KLVVH503	KLVVH505	KLVVH505	KLVVH507	KLVVH507	KLVVH509
peso weight Kg.	0,31	0,30	0,68	1,12	1,45	2,34	3,13	5,13	9,22

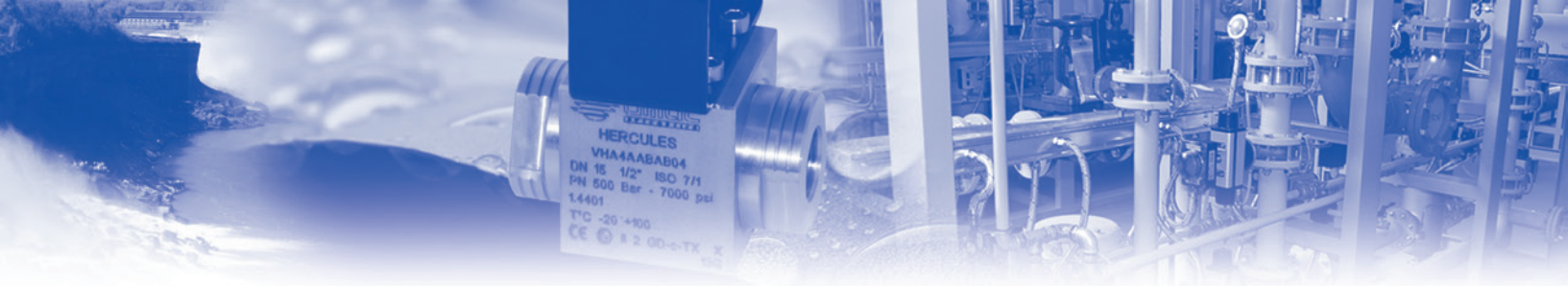
NOTA: Per la versione ATEX aggiungere "YX" alla fine del codice *NOTE: Please add "YX" at the end of the code for the ATEX version*

Hercules Stainless steel
PTFE-TFM1600 seals

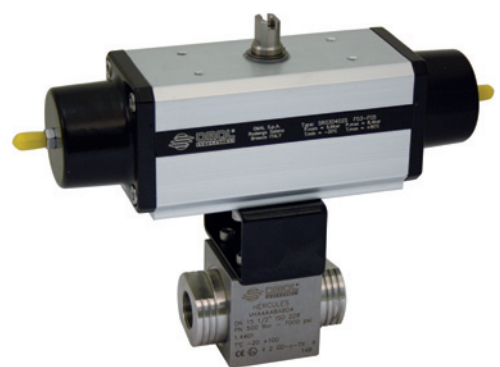
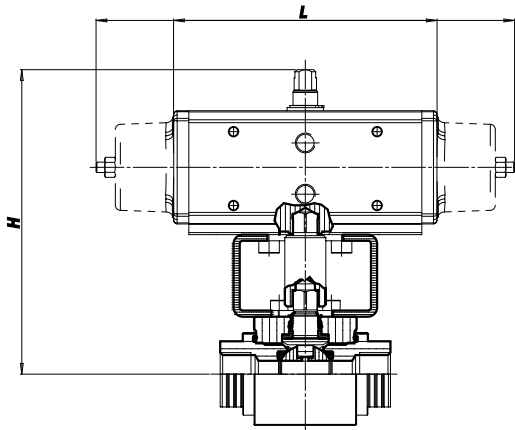
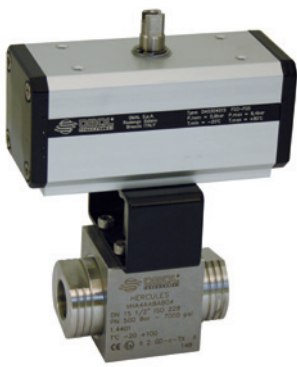


DIMENSIONI DIMENSIONS

Size	A	B	C	D	E	F	G	ØH	Ch.Q	□M	□N	P	R	S
DN 6 - 1/8"	69	1/8"	30	13	17	27	10	6	19	21x30	6	M5	103,5	56,1
DN 8 - 1/4"	69	1/4"	30	13	17	27	10	6	19	21x30	6	M5	103,5	56,1
DN 10 - 3/8"	72	3/8"	45	19,7	25,3	38,3	13	9	24	29,7 (F04)	9	M5	140	75,5
DN 15 - 1/2"	83	1/2"	50	25	28	41	13	13	32	29,7 (F04)	9	M5	140	83,6
DN 20 - 3/4"	95	3/4"	55	27,5	31	46	15	19	37	35,36 (F05)	11	M6	212	94,8
DN 25 - 1"	113	1"	65	32,5	35	50	15	25	45	35,36 (F05)	11	M6	212	103,8
DN 32 - 1"1/4"	111	1"1/4"	80	38	42	62	20	32	55	49,5 (F07)	14	M8	315	121,6
DN 40 - 1"1/2"	130	1"1/2"	90	44	46	66	20	38	65	49,5 (F07)	14	M8	315	131,6
DN 50 - 2"	140	2"	120	59	61	81	20	51	80	49,5 (F07)	17	M8	315	161,7



VALVOLA PER ALTA CICLICITA' CON ATTUATORE DOPPIO E SEMPLICE EFFETTO
HIGH CICLICITY VALVE WITH DOUBLE ACTING AND SPRING RETURN ACTUATOR



Hercules stainless steel
PTFE-ITFM1600 seals

ATTUATORE PNEUMATICO DOPPIO EFFETTO
DOUBLE ACTING PNEUMATIC ACTUATOR

VERSIONE EN ISO 228 EN ISO 228 VERSION	Articolo	Attuatore	Kit di montaggio	DN	size	L mm	H mm	Peso Kg
	Model	Actuator	Mounting kit	mm				Weight Kg
	DHA4TCTFT01AABA0	DA015401S	KCF034565	06	1/8"	114	129,4	1,29
	DHA4TCTFT02AABA0	DA015401S	KCF034565	08	1/4"	114	129,4	1,28
	DHA4TCTFT03AACA0	DA030401S	KCF034569	10	3/8"	130,2	145,7	1,94
	DHA4TCTFT04AACA0	DA030401S	KCF034569	15	1/2"	130,2	148,4	2,38
	DHA4TCTFT05AADA0	DA045402S	KCF044562	20	3/4"	144,1	156,7	3,02
	DHA4TCTFT06AAEA0	DA060402S	KCF044562	25	1"	152	165,4	4,22
	DHA4TCTFT07AAFA0	DA090401S	KCF054564	32	1 1/4"	168,6	179,5	5,41
	DHA4TCTFT08AAHA0	DA120401S	KCF054564	40	1 1/2"	183,9	202,4	8,36
	DHA4TCTFT09AAIA0	DA180401S	KCF074563	50	2"	212,2	227	13,11

ATTUATORE PNEUMATICO SEMPLICE EFFETTO
SPRING RETURN PNEUMATIC ACTUATOR

VERSIONE EN ISO 228 EN ISO 228 VERSION	Articolo	Attuatore	Kit di montaggio	DN	size	L mm	H mm	Peso Kg
	Model	Actuator	Mounting kit	mm				Weight Kg
	SHA4TCTFT01AACA0	SR015401S	KCF034565	06	1/8"	221	137,4	1,86
	SHA4TCTFT02AACA0	SR015401S	KCF034565	08	1/4"	221	137,4	1,85
	SHA4TCTFT03AAEA0	SR030402S	KCF044571	10	3/8"	240,2	155,7	2,96
	SHA4TCTFT04AAEA0	SR030402S	KCF044571	15	1/2"	240,2	158,4	3,40
	SHA4TCTFT05AAFA0	SR045401S	KCF054573	20	3/4"	293,6	168,5	4,30
	SHA4TCTFT06AAHA0	SR060401S	KCF054573	25	1"	319,5	191,4	6,29
	SHA4TCTFT07AAIA0	SR090401S	KCF074574	32	1 1/4"	357	208	8,24
	SHA4TCTFT08AAJA0	SR120401S	KCF074574	40	1 1/2"	368,2	222,4	12,34
	SHA4TCTFT09AAKA0	SR180401S	KCF104575	50	2"	435,5	249	19,38

NOTA: Per la versione ATEX aggiungere "YX" alla fine del codice **NOTE:** Please add "YX" at the end of the code for the ATEX version
 Il dimensionamento degli attuatori pneumatici è stato fatto considerando una pressione minima di alimentazione pari a 5,6 barg.
 The sizing of pneumatic actuators has been done considering a minimum supply pressure of 5,6 barg.

ATTUATORE PNEUMATICO DOPPIO EFFETTO
DOUBLE ACTING PNEUMATIC ACTUATOR

VERSIONE NPT NPT VERSION	Articolo	Attuatore	Kit di montaggio	DN	size	L mm	H mm	Peso Kg
	Model	Actuator	Mounting kit	mm				Weight Kg
	DHA4TCTFT41AABA0	DA015401S	KCF034565	06	1/8"	114	129,4	1,29
	DHA4TCTFT42AABA0	DA015401S	KCF034565	08	1/4"	114	129,4	1,28
	DHA4TCTFT43AACA0	DA030401S	KCF034569	10	3/8"	130,2	145,7	1,94
	DHA4TCTFT44AACA0	DA030401S	KCF034569	15	1/2"	130,2	148,4	2,38
	DHA4TCTFT45AADA0	DA045402S	KCF044562	20	3/4"	144,1	156,7	3,02
	DHA4TCTFT46AAEA0	DA060402S	KCF044562	25	1"	152	165,4	4,22
	DHA4TCTFT47AAFA0	DA090401S	KCF054564	32	1 1/4"	168,6	179,5	5,41
	DHA4TCTFT48AAHA0	DA120401S	KCF054564	40	1 1/2"	183,9	202,4	8,36
	DHA4TCTFT49AAIA0	DA180401S	KCF074563	50	2"	212,2	227	13,11

ATTUATORE PNEUMATICO SEMPLICE EFFETTO
SPRING RETURN PNEUMATIC ACTUATOR

VERSIONE NPT NPT VERSION	Articolo	Attuatore	Kit di montaggio	DN	size	L mm	H mm	Peso Kg
	Model	Actuator	Mounting kit	mm				Weight Kg
	SHA4TCTFT41AACA0	SR015401S	KCF034565	06	1/8"	221	137,4	1,86
	SHA4TCTFT42AACA0	SR015401S	KCF034565	08	1/4"	221	137,4	1,85
	SHA4TCTFT43AAEA0	SR030402S	KCF044571	10	3/8"	240,2	155,7	2,96
	SHA4TCTFT44AAEA0	SR030402S	KCF044571	15	1/2"	240,2	158,4	3,40
	SHA4TCTFT45AAFA0	SR045401S	KCF054573	20	3/4"	293,6	168,5	4,30
	SHA4TCTFT46AAHA0	SR060401S	KCF054573	25	1"	319,5	191,4	6,29
	SHA4TCTFT47AAIA0	SR090401S	KCF074574	32	1 1/4"	357	208	8,24
	SHA4TCTFT48AAJA0	SR120401S	KCF074574	40	1 1/2"	368,2	222,4	12,34
	SHA4TCTFT49AAKA0	SR180401S	KCF104575	50	2"	435,5	249	19,38