



**PNEUMAX**



**ATEX**  
OVERVIEW



# ATEX Overview

## Components for explosive atmosphere

Pneumax is offering a range of components usable in potentially explosive atmosphere and classified in different protection categories according to Directive 2014/34/UE, also known as ATEX.

# ATEX Directive

## 2014/34 /UE

Directive ATEX 2014/34/EU (previously ATEX 94/9/EC) provides for harmonised requirements and conformity assessment procedures for electrical and non-electrical equipment, intended for use in environments which are potentially explosive due to dust or gas hazards, and protective systems. Safety devices intended for use

outside explosive atmospheres, which are required for or contribute to the safe functioning of equipment or protective systems with respect to risks of explosion are also included.

ATEX Directive divides equipment into groups and categories as shown in table below.

**ATEX directive divides equipment in groups and categories as shown in the following table:**

| GROUPS |                    | CATEGORIES |                               | CONDITION OF OPERATIONS  |
|--------|--------------------|------------|-------------------------------|--|
| I      | Underground Mines  | M1         | Very high level of protection | Equipment remains energised and functioning when explosive atmosphere present        |
|        |                    | M2         | High level of protection      | Equipment de-energised when explosive atmosphere is recognised                       |
| II     | Surface industries | 1          | Very high level of protection | Equipment remains energised and functioning in Zones 0,1,2 (G) and/or 20, 21, 22 (D) |
|        |                    | 2          | High level of protection      | Equipment remains energised and functioning in Zones 1, 2 (G) and/or 21, 22 (D)      |
|        |                    | 3          | Normal protection             | Equipment remains energised and functioning in Zone 2 (G) and/or 22 (D)              |

The conformity assessment procedures depend on the categories (level of protection) of the intended use of the equipment.

## Atmosphere Explosive

**An explosive atmosphere is a mixture of flammable gases, vapours, mists or dusts with air, under specific atmospheric conditions in which, after ignition has occurred, combustion propagates to the flammable mixture.**

|                                  |  |
|----------------------------------|--|
| <b>GAS:</b><br>IIA, IIB, IIC     | <p>Gas and vapours are divided into 3 sub-groups IIA, IIB and IIC depending of the characteristics of the substance. The group IIC is the most dangerous and the group IIA is the less one. Based on the substance, it is possible to identify the group to which the equipment must belong.</p> <p>Each equipment is suitable and approved for a gas group: equipment of IIC group can be installed also in location that require equipment of the groups IIA and IIB and IIC.</p> <p>Example of substances:</p> <ul style="list-style-type: none"> <li>- <b>IIA:</b> acetone, ethyl alcohol, ammonia, petrol, butane, hexane, ethane, natural gas, naphtha, propane, toluene, solvents, etc..</li> <li>- <b>IIB:</b> acetaldehyde, cyclopropane, ethyl ether, ethylene, etc...</li> <li>- <b>IIC:</b> acetylene, hydrogen, gases containing more than 25% hydrogen, carbon disulphide, etc...</li> </ul> |
| <b>DUST:</b><br>IIIA, IIIB, IIIC | <p>Dusts are into 3 sub-groups <b>IIIA</b>, <b>IIIB</b> and <b>IIIC</b>:</p> <ul style="list-style-type: none"> <li>- <b>IIIA:</b> fiber</li> <li>- <b>IIIB:</b> non conductive dust</li> <li>- <b>IIIC:</b> conductive dust</li> </ul>  |

Directive 2014/34/EU (Manufacturer Directive) applies to equipment and protective systems (group, category, assessment procedures, marking) whereas ATEX Directive 99/92/CE (User Directive) provides for a classification of the places where explosive atmospheres may occur

(zoning) and define protection level of the equipment and protective systems (groups and categories) shall be used in each zone. Hazardous locations are classified, by the User, in zones based on frequency and duration of the occurrence of explosive atmosphere.

|      |                |  |
|------|----------------|--|
| GAS  | <b>Zone 0</b>  | A place in which an explosive atmosphere consisting of a mixture with air of flammable substances in the form of gas, vapour or mist is present continuously or for long periods or frequently.  |
|      | <b>Zone 1</b>  | A place in which an explosive atmosphere consisting of a mixture with air or flammable substances in the form of gas, vapour or mist is likely to occur in normal operation occasionally.  |
|      | <b>Zone 2</b>  | A place in which an explosive atmosphere consisting of a mixture with air of flammable substances in the form of gas, vapour or mist is not likely to occur in normal operation but, if it does occur, will persist for a short period only. |
| DUST | <b>Zone 20</b> | A place in which an explosive atmosphere in the form of a cloud of combustible dust in air is present continuously, or for long periods or frequently.   |
|      | <b>Zone 21</b> | A place in which an explosive atmosphere in the form of a cloud of combustible dust in air is likely to occur in normal operation occasionally.  |
|      | <b>Zone 22</b> | A place in which an explosive atmosphere in the form of a cloud of combustible dust in air is not likely to occur in normal operation but, if it does occur, will persist for a short period only.   |

## ATEX product

The products shall be provide by the appropriate identification label, which includes, in addition to the CE marking, the specific marking of explosive protection (Epsilon-x, in the hexagon) followed by the group (I or II) and category; for group II, the letter G is added for equipment for Gas while equipment for dust is identified by the letter D (Dust).

Other information usually located in marking plate are:

- Gas/dust subgroup
- Type of protection
- Temperature class (Gas) and max surface temperature (Dust)
- Equipment protection level (EPL)

## Correlation between zone , category and EPL

| Zone | Category | EPL |
|------|----------|-----|
| 0    | 1G       | Ga  |
| 1    | 2G       | Gb  |
| 2    | 3G       | Gc  |
| 20   | 1D       | Da  |
| 21   | 2D       | Db  |
| 22   | 3D       | Dc  |

## ATEX Marking

### Correlation between max surface temperature and temperature class of equipment

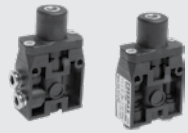
| Equipment              |          | Electrical products<br>(according EN 60079-X)  | Non - Electrical products<br>(according EN 13463-X) | Non - Electrical products (according<br>EN ISO 80079-36 & 80079-37 )<br>Mandatory from 10/2019 |
|------------------------|----------|--|---|--|
| Surface temperature Ts | Class t. | xxxxx  II 2 G Ex ib T4 Gb X<br>II 2 D Ex tb T135°C Db X                                | II 2 GD c T4 T135°C X                               | II 2 G Ex h T4 Gb X<br>II 2 D Ex h T135°C Db X   |
| Ts < 85°C              | T6       | xxxx N° of Ex Notified Body (only category 2 and 1) for quality assurance notification | II Group  | II Group   |
| 85°C < Ts < 100°C      | T5       | II Group   | 2 Category  | 2 Category   |
| 100°C < Ts < 135°C     | T4       | 2 Category   | G, D Gas, Dust                                      | G, D Gas, Dust   |
| 135°C < Ts < 200°C     | T3       | G, D Gas, Dust   | c Constructional safety "c"                         | Ex h Protection for non - electrical equipment   |
| 200°C < Ts < 300°C     | T2       | Ex ib Intrinsically safe "ib"  | T4 Temperature class                                | T4 Temperature class   |
| 300°C < Ts < 450°C     | T1       | Ex tb Dust tight enclosure "tb"  | T135°C Maximum surface temperature                  | T135°C Maximum surface temperature   |
|                        |          | T4 Temperature class   | Gb, Db EPL  | Gb, Db EPL   |
|                        |          | T135°C Maximum surface temperature   | X Special condition for safe use (see instruction)  | X Special condition for safe use (see instruction)   |
|                        |          | Gb, Db EPL   |   |  |
|                        |          | X Special condition for safe use (see instruction)                                     |   |  |

## Air distribution

### Valves and solenoid valves

#### Valves and solenoid valves with spools

ATEX ON REQUEST


**SERIES 104**

**cod. X104\_ - Valves**

| Marking   | Temperature       | Versions                                      | Size | Function              | Connection |
|---|-------------------|---|------|-----------------------|------------|
| II 3G Ex h IIB T4 Gc X<br>II 3D Ex h IIIC T105°C Dc X | -5°C ≤ Ta ≤ +50°C | <b>Pneumatic,<br/>mechanic and<br/>manual</b> | -    | 2/2, 3/2,<br>5/2, 5/3 | Ø4         |

ATEX ON REQUEST


**SERIES 105**

**cod. X105\_ - Valves**

| Marking  | Temperature       | Versions                                      | Size | Function | Connection |
|--|-------------------|---|------|----------|------------|
| II 2G Ex h IIC T5 Gb X<br>II 2D Ex h IIIC T90°C Db X | -5°C ≤ Ta ≤ +70°C | <b>Pneumatic,<br/>mechanic and<br/>manual</b> | -    | 3/2, 5/2 | M5         |

**cod. X105\_2640\_ - Handle with valve**

| Marking  | Temperature       | Versions                                      | Size | Function | Connection |
|--|-------------------|---|------|----------|------------|
| II 3G Ex h IIB T5 Gc X<br>II 3D Ex h IIIC T90°C Dc X | -5°C ≤ Ta ≤ +70°C | <b>Pneumatic,<br/>mechanic and<br/>manual</b> | -    | 3/2, 5/2 | M5         |

ATEX ON REQUEST


**SERIES 200**

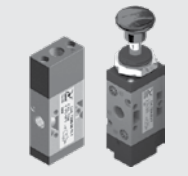
**cod. X2\_ - Valves**

| Marking   | Temperature       | Version                                       | Size | Function         | Connection               |
|---|-------------------|---|------|------------------|--------------------------|
| II 2G Ex h IIC T5 Gb X<br>II 2D Ex h IIIC T100°C Db X | -5°C ≤ Ta ≤ +70°C | <b>Pneumatic,<br/>mechanic and<br/>manual</b> | -    | 3/2,<br>5/2, 5/3 | G1/8 - G1/4<br>G1/2 - G1 |

**cod. X2\_10\_ - Valves with pedal**

| Marking   | Temperature       | Version                                       | Size | Function         | Connection               |
|---|-------------------|---|------|------------------|--------------------------|
| II 3G Ex h IIB T5 Gc X<br>II 3D Ex h IIIC T100°C Dc X | -5°C ≤ Ta ≤ +70°C | <b>Pneumatic,<br/>mechanic and<br/>manual</b> | -    | 3/2,<br>5/2, 5/3 | G1/8 - G1/4<br>G1/2 - G1 |

ATEX ON REQUEST


**SERIES T200**

**cod. X2T8\_ | X2T4\_ - Pneumatic valves**

| Marking  | Temperature       | Version         | Size | Function         | Connection  |
|--|-------------------|-----------------|------|------------------|-------------|
| II 2G Ex h IIB T5 Gb X<br>II 2D Ex h IIIC T96°C Db X | -5°C ≤ Ta ≤ +50°C | <b>Solenoid</b> | -    | 3/2,<br>5/2, 5/3 | G1/8 - G1/4 |

ATEX ON REQUEST


**SERIES 800**

**cod. X80\_11\_ - Valves**

| Marking   | Temperature       | Version                                       | Size | Function         | Connection |
|---|-------------------|---|------|------------------|------------|
| II 2G Ex h IIC T5 Gb X<br>II 2D Ex h IIIC T100°C Db X | -5°C ≤ Ta ≤ +70°C | <b>Pneumatic,<br/>mechanic and<br/>manual</b> | -    | 3/2,<br>5/2, 5/3 | M5 - G1/8  |

**Cod. X8\_M2 - Solenoid valves without coils**

| Marking  | Temperature       | Version         | Size | Function         | Connection        |
|--|-------------------|-----------------|------|------------------|-------------------|
| II 2G Ex h IIC T6 Gb X<br>II 2D Ex h IIIC T70°C Db X | -5°C ≤ Ta ≤ +50°C | <b>Solenoid</b> | -    | 3/2,<br>5/2, 5/3 | M5 - G1/8<br>G1/4 |

**cod. X8\_X\_ - Solenoid valves with coils XME 2GD**

| Marking  | Temperature       | Version         | Size | Function         | Connection        |
|--|-------------------|-----------------|------|------------------|-------------------|
| II 2G Ex h IIC T4 Gb X<br>II 2D Ex h IIIC T135°C Db X IP65 | -5°C ≤ Ta ≤ +40°C | <b>Solenoid</b> | -    | 3/2,<br>5/2, 5/3 | M5 - G1/8<br>G1/4 |



ATEX ON REQUEST



**SERIES 800 (continue)**



cod. **X8\_B\_ | X8\_C\_** - Solenoid valves with coils XMB or XMC 3GD

| Marking  | Temperature       | Versions | Size | Function         | Connection |
|--|-------------------|----------|------|------------------|------------|
| II 3G Ex h IIC T4 Gc X<br>II 3D Ex h IIIC T120°C Dc X IP65 | -5°C ≤ Ta ≤ +40°C | Solenoid | -    | 3/2,<br>5/2, 5/3 | M5 - G1/8  |

cod. **X805\_ | X808\_ | X818\_** - Solenoid valves with electric pilot XN3\_ 15mm 3GD

| Marking  | Temperature       | Versions | Size | Function         | Connection |
|--|-------------------|----------|------|------------------|------------|
| II 3G Ex h IIC T4 Gc X<br>II 3D Ex h IIIC T125°C Dc X IP65 | -5°C ≤ Ta ≤ +50°C | Solenoid | -    | 3/2,<br>5/2, 5/3 | M5 - G1/8  |

cod. **X824\_ | X828\_** - Solenoid valves without coils

| Marking  | Temperature       | Versions                                    | Size | Function         | Connection |
|--|-------------------|---|------|------------------|------------|
| II 3G Ex h IIB T6 Gc X<br>II 3D Ex h IIIC T70°C Dc X | -5°C ≤ Ta ≤ +50°C | Solenoid, pneumatic,<br>mechanic and manual | -    | 3/2,<br>5/2, 5/3 | G1/4       |

ATEX ON REQUEST



**SERIES 400**



cod. **X4\_M2\_** - Solenoid valves without coils

| Marking  | Temperature       | Versions                                    | Size | Function         | Connection          |
|--|-------------------|---|------|------------------|---------------------|
| II 2G Ex h IIB T6 Gb X<br>II 2D Ex h IIIC T70°C Db X | -5°C ≤ Ta ≤ +50°C | Solenoid, pneumatic,<br>mechanic and manual | -    | 3/2,<br>5/2, 5/3 | G1/8 - G1/4<br>G1/2 |

cod. **X4\_X\_** - Solenoid valves with coils XME 2GD

| Marking  | Temperature       | Versions                                    | Size | Function         | Connection          |
|--|-------------------|---|------|------------------|---------------------|
| II 2G Ex h IIB T4 Gb X<br>II 2D Ex h IIIC T135°C Db X IP65 | -5°C ≤ Ta ≤ +40°C | Solenoid, pneumatic,<br>mechanic and manual | -    | 3/2,<br>5/2, 5/3 | G1/8 - G1/4<br>G1/2 |

cod. **X4\_B\_ | X4\_C\_ | X4\_M\_** - Solenoid valves with coils XMB or XMC 3GD

| Marking  | Temperature       | Versions                                    | Size | Function              | Connection          |
|--|-------------------|---|------|-----------------------|---------------------|
| II 3G Ex h IIB T4 Gc X<br>II 3D Ex h IIIC T120°C Dc X IP65 | -5°C ≤ Ta ≤ +40°C | Solenoid, pneumatic,<br>mechanic and manual | -    | 2/2, 3/2,<br>5/2, 5/3 | G1/8 - G1/4<br>G1/2 |

ATEX ON REQUEST



**SERIES T400**



cod. **X4T8\_ | X4T4\_** - Valves and solenoid valves without coils

| Marking  | Temperature       | Versions                                    | Size | Function         | Connection  |
|--|-------------------|---|------|------------------|-------------|
| II 2G Ex h IIB T5 Gb X<br>II 2D Ex h IIIC T96°C Db X | -5°C ≤ Ta ≤ +50°C | Solenoid, pneumatic,<br>mechanic and manual | -    | 3/2,<br>5/2, 5/3 | G1/8 - G1/4 |

cod. **X4T8\_ | X4T4\_** - Solenoid valves with coils XME 2GD

| Marking  | Temperature       | Versions                                    | Size | Function         | Connection  |
|--|-------------------|---|------|------------------|-------------|
| II 2G Ex h IIB T4 Gb X<br>II 2D Ex h IIIC T135°C Db X IP65 | -5°C ≤ Ta ≤ +40°C | Solenoid, pneumatic,<br>mechanic and manual | -    | 3/2,<br>5/2, 5/3 | G1/8 - G1/4 |

cod. **X4T8\_ | X4T4\_** - Solenoid valves with coils XMB or XMC 3GD

| Marking  | Temperature       | Versions                                    | Size | Function         | Connection  |
|--|-------------------|---|------|------------------|-------------|
| II 3G Ex h IIB T4 Gc X<br>II 3D Ex h IIIC T120°C Dc X IP65 | -5°C ≤ Ta ≤ +40°C | Solenoid, pneumatic,<br>mechanic and manual | -    | 3/2,<br>5/2, 5/3 | G1/8 - G1/4 |

ATEX ON REQUEST



**SERIES 2400 LINE-FLAT-VDMA**



cod. **2400\_** - Solenoid valves

| Marking   | Temperature       | Versions     | Size | Function           | Connection             |
|---|-------------------|--------------|------|--------------------|------------------------|
| II 3G Ex nA IIC T6 Gc IP65<br>II 3D Ex tc IIIC T=85°C Dc IP65 | -5°C ≤ Ta ≤ +50°C | All versions | 18mm | 5/2, 5/3,<br>2x3/2 | G1/8 - G1/4<br>Ø6 - Ø8 |

ATEX ON REQUEST



**SERIES 2600 LINE-FLAT-VDMA**



cod. **2600\_** - Solenoid valves

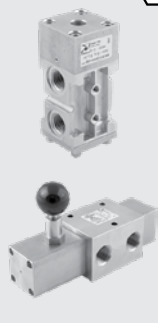
| Marking   | Temperature       | Versions     | Size | Function | Connection         |
|---|-------------------|--------------|------|----------|--------------------|
| II 3G Ex nA IIC T6 Gc IP65<br>II 3D Ex tc IIIC T=85°C Dc IP65 | -5°C ≤ Ta ≤ +50°C | All versions | 26mm | 5/2, 5/3 | G3/8 - G1/4<br>Ø10 |

## Valves and solenoid valves with spool

ATEX READY



### PROCESS AUTOMATION TECHNOLOGY STAINLESS STEEL


 cod. **SS11\_ | SS12\_ | SS14\_ | SS34\_ - H** - High temperature

| Marking   | Temperature  | Version                                  | Size | Function | Connection           |
|---|--|--|------|----------|----------------------|
| II 2G Ex h IIC T3 Gb X<br>II 2D Ex h IIIC T180°C Db X | $-10^{\circ}\text{C} \leq T_a \leq +150^{\circ}\text{C}$ | Solenoid, pneumatic, mechanic and manual | -    | 3/2, 5/2 | 1/4" NPT<br>1/2" NPT |

 cod. **SS11\_ | SS12\_ | SS14\_ | SS34\_ - L** - Low temperature

| Marking   | Temperature   | Version                                  | Size | Function | Connection           |
|---|---|--|------|----------|----------------------|
| II 2G Ex h IIC T5 Gb X<br>II 2D Ex h IIIC T100°C Db X | $-50^{\circ}\text{C} \leq T_a \leq +70^{\circ}\text{C}$ | Solenoid, pneumatic, mechanic and manual | -    | 3/2, 5/2 | 1/4" NPT<br>1/2" NPT |

ATEX READY



### PROCESS AUTOMATION TECHNOLOGY ALUMINIUM SERIES


 cod. **SS11\_ | SS12\_ | SS14\_ | SS38\_**

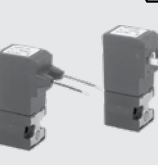
| Marking   | Temperature   | Version                                  | Size | Function | Connection                     |
|---|---|--|------|----------|--------------------------------|
| II 2G Ex h IIC T5 Gb X<br>II 2D Ex h IIIC T100°C Db X | $-30^{\circ}\text{C} \leq T_a \leq +70^{\circ}\text{C}$ | Solenoid, pneumatic, mechanic and manual | -    | 3/2, 5/2 | 1/4" NPT<br>1/2" NPT<br>1" NPT |

## Direct operated solenoid valves

ATEX ON REQUEST



### SERIES 300


 cod. **XN3\_** - Direct operated solenoid valves

| Marking  | Temperature  | Version | Size | Function | Connection |
|--|--|---------|------|----------|------------|
| II 3G Ex nA IIC T4 Gc X<br>II 3D Ex tc IIIC T125°C Dc X IP65 | $-10^{\circ}\text{C} \leq T_a \leq 50^{\circ}\text{C}$ | NC-NO   | 15mm | 3/2      | -          |

ATEX ON REQUEST



### M SERIES (MECHANICS)


 cod. **XM2\_ , XM2/\_ | X3\_5.M1, X3\_5.M1/\_** - Solenoid valves without coils

| Marking  | Temperature   | Version | Size | Function | Connection      |
|--|---|---------|------|----------|-----------------|
| II 2G Ex h IIC T6 Gb X<br>II 2D Ex h IIIC T70°C Db X | $-10^{\circ}\text{C} \leq T_a \leq +50^{\circ}\text{C}$ | NC-NO   | -    | 3/2      | Ø4 - M5<br>G1/8 |

 cod. **XM2\_ , XM2/\_ | X3\_5.M1, X3\_5.M1/\_** - Solenoid valves with coils XME 2GD

| Marking  | Temperature   | Version | Size | Function | Connection      |
|--|---|---------|------|----------|-----------------|
| II 2G Ex h IIC T4 Gb X<br>II 2D Ex h IIIC T135°C Db X IP65 | $-10^{\circ}\text{C} \leq T_a \leq +40^{\circ}\text{C}$ | NC-NO   | -    | 3/2      | Ø4 - M5<br>G1/8 |

 cod. **XM2\_ , XM2/\_ | X3\_5.M1, X3\_5.M1/\_** - Solenoid valves with coils XMB or XMC 3GD

| Marking  | Temperature   | Version | Size | Function | Connection      |
|--|---|---------|------|----------|-----------------|
| II 3G Ex h IIC T4 Gc X<br>II 3D Ex h IIIC T120°C Dc X IP65 | $-10^{\circ}\text{C} \leq T_a \leq +40^{\circ}\text{C}$ | NC-NO   | -    | 3/2      | Ø4 - M5<br>G1/8 |

ATEX ON REQUEST



### CNOMO SERIES


 cod. **XM3P\_ , XM3R\_ | XM4P\_ , XM4R\_ | XM5P\_ , XM5R\_** - Solenoid valves without coils

| Marking  | Temperature   | Version | Size | Function | Connection |
|--|---|---------|------|----------|------------|
| II 2G Ex h IIB T6 Gb X<br>II 2D Ex h IIIC T70°C Db X | $-10^{\circ}\text{C} \leq T_a \leq +50^{\circ}\text{C}$ | NC-NO   | -    | 3/2      | -          |

 cod. **XM3P\_ , XM3R\_ | XM4P\_ , XM4R\_ | XM5P\_ , XM5R\_** - Solenoid valves with coils XME 2GD

| Marking  | Temperature   | Version | Size | Function | Connection |
|--|---|---------|------|----------|------------|
| II 2G Ex h IIB T4 Gb X<br>II 2D Ex h IIIC T135°C Db X IP65 | $-10^{\circ}\text{C} \leq T_a \leq +40^{\circ}\text{C}$ | NC-NO   | -    | 3/2      | -          |





ATEX ON REQUEST



**CNOMO SERIES (continue)**



cod. **XM3P\_ , XM3R\_ | XM4P\_ , XM4R\_ | XM5P\_ , XM5R\_** - Solenoid valves with coils XMB or XMC 3GD

| Marking  | Temperature        | Version | Size | Function | Connection |
|--|--------------------|---------|------|----------|------------|
| II 3G Ex h IIB T4 Gc X<br>II 3D Ex h IIIC T120°C Dc X IP65 | -10°C ≤ Ta ≤ +40°C | NC-NO   | -    | 3/2      | -          |

**Valves and solenoid valves Poppet system**

ATEX ON REQUEST



**SERIES 700**



cod. **X70532\_ | X77\_3211\_** - Valves

| Marking  | Temperature       | Version | Size | Function | Connection                         |
|--|-------------------|---------|------|----------|------------------------------------|
| II 2G Ex h IIB T5 Gb X<br>II 2D Ex h IIIC T95°C Db X | -5°C ≤ Ta ≤ +70°C | NC-NO   | -    | 3/2      | G3/8 - G1/2<br>G3/4 - G1<br>G1 1/2 |

cod. **X7\_M2** - Solenoid valves without coils

| Marking  | Temperature       | Version | Size | Function | Connection                         |
|--|-------------------|---------|------|----------|------------------------------------|
| II 2G Ex h IIB T6 Gb X<br>II 2D Ex h IIIC T70°C Db X | -5°C ≤ Ta ≤ +50°C | NC-NO   | -    | 3/2      | G3/8 - G1/2<br>G3/4 - G1<br>G1 1/2 |

cod. **X7\_X\_** - Solenoid valves with coils XME 2GD

| Marking  | Temperature       | Version | Size | Function | Connection                         |
|--|-------------------|---------|------|----------|------------------------------------|
| II 2G Ex h IIB T4 Gb X<br>II 2D Ex h IIIC T135°C Db X IP65 | -5°C ≤ Ta ≤ +40°C | NC-NO   | -    | 3/2      | G3/8 - G1/2<br>G3/4 - G1<br>G1 1/2 |

cod. **X7\_B\_ | X7\_C\_** - Solenoid valves with coils XME 2GD XMB or XMC 3GD

| Marking  | Temperature       | Version | Size | Function | Connection                         |
|--|-------------------|---------|------|----------|------------------------------------|
| II 3G Ex h IIB T4 Gc X<br>II 3D Ex h IIIC T120°C Dc X IP65 | -5°C ≤ Ta ≤ +40°C | NC-NO   | -    | 3/2      | G3/8 - G1/2<br>G3/4 - G1<br>G1 1/2 |

ATEX READY



**PROCESS AUTOMATION TECHNOLOGY ALUMINIUM SERIES**



cod. **SA771 | SA772 | SA773 | SAN776**

| Marking   | Temperature        | Version | Size | Function | Connection                                   |
|---|--------------------|---------|------|----------|--|
| II 2G Ex h IIB T5 Gb X<br>II 2D Ex h IIIC T100°C Db X | -30°C ≤ Ta ≤ +70°C | NC-NO   | -    | 3/2      | 1/2" NPT<br>3/4" NPT<br>1" NPT<br>1 1/2" NPT |

**Valves and solenoid valves NAMUR**

ATEX ON REQUEST



**SERIES 514/N**



cod. **X514/N** - Valves and solenoid valves without coils

| Marking  | Temperature        | Version   | Size | Function   | Connection |
|--|--------------------|---|------|------------|------------|
| II 2G Ex h IIB T5 Gb X<br>II 2D Ex h IIIC T96°C Db X | -10°C ≤ Ta ≤ +50°C | Solenoid - Spring<br>Solenoid - Differential<br>Solenoid - Solenoid | -    | 3/2<br>5/2 | G1/4       |

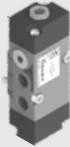
cod. **X514/N** - Solenoid valves with coils XME 2GD

| Marking  | Temperature        | Version   | Size | Function   | Connection |
|--|--------------------|---|------|------------|------------|
| II 2G Ex h IIB T4 Gb X<br>II 2D Ex h IIIC T135°C Db X IP65 | -10°C ≤ Ta ≤ +40°C | Solenoid - Spring<br>Solenoid - Differential<br>Solenoid - Solenoid | -    | 3/2<br>5/2 | G1/4       |

cod. **X514/N** - Solenoid valves with coils XMB or XMC 3GD

| Marking  | Temperature        | Version   | Size | Function   | Connection |
|--|--------------------|---|------|------------|------------|
| II 3G Ex h IIB T4 Gc X<br>II 3D Ex h IIIC T120°C Dc X IP65 | -10°C ≤ Ta ≤ +40°C | Solenoid - Spring<br>Solenoid - Differential<br>Solenoid - Solenoid | -    | 3/2<br>5/2 | G1/4       |

ATEX ON REQUEST


**SERIES T514**

 cod. **X5T4** - Valves and solenoid valves without coils

| Marking  | Temperature  | Version   | Size | Function        | Connection |
|--|--|---|------|-----------------|------------|
| II 2G Ex h IIB T5 Gb X<br>II 2D Ex h IIIC T96°C Db X | $-5^{\circ}\text{C} \leq \text{Ta} \leq +50^{\circ}\text{C}$ | Pneum. o Sol. - Differential<br>Pneum. o Sol. - Spring<br>Pneum. o Sol. - Pneumatic | -    | 4/2<br>5/2, 9/2 | G1/4       |

 cod. **X5T4** - Solenoid valves with coils XME 2GD

| Marking  | Temperature  | Version  | Size | Function        | Connection |
|--|--|--|------|-----------------|------------|
| II 2G Ex h IIB T4 Gb X<br>II 2D Ex h IIIC T135°C Db X IP65 | $-5^{\circ}\text{C} \leq \text{Ta} \leq +40^{\circ}\text{C}$ | Solenoid - Differential<br>Solenoid - Spring<br>Solenoid - Pneumatic | -    | 4/2<br>5/2, 9/2 | G1/4       |

 cod. **X5T4** - Solenoid valves with coils XMB or XMC 3GD

| Marking  | Temperature  | Version  | Size | Function        | Connection |
|--|--|--|------|-----------------|------------|
| II 3G Ex h IIB T4 Gc X<br>II 3D Ex h IIIC T120°C Dc X IP65 | $-5^{\circ}\text{C} \leq \text{Ta} \leq +40^{\circ}\text{C}$ | Solenoid - Differential<br>Solenoid - Spring<br>Solenoid - Pneumatic | -    | 4/2<br>5/2, 9/2 | G1/4       |

ATEX ON REQUEST


**SERIES 514 - 516**

 cod. **X514** | **X516** - Valves and solenoid valves without coils

| Marking  | Temperature   | Version   | Size | Function        | Connection |
|--|---|---|------|-----------------|------------|
| II 2G Ex h IIC T5 Gb X<br>II 2D Ex h IIIC T96°C Db X | $-30^{\circ}\text{C} \leq \text{Ta} \leq +50^{\circ}\text{C}$ | Pneum. o Sol. - Differential<br>Pneum. o Sol. - Spring<br>Pneum. o Sol. - Pneumatic | -    | 4/2<br>5/2, 9/2 | G1/4       |

 cod. **X514** | **X516** - Solenoid valves with coils XME 2GD

| Marking  | Temperature   | Version  | Size | Function        | Connection |
|--|---|--|------|-----------------|------------|
| II 2G Ex h IIC T4 Gb X<br>II 2D Ex h IIIC T135°C Db X IP65 | $-20^{\circ}\text{C} \leq \text{Ta} \leq +40^{\circ}\text{C}$ | Solenoid - Differential<br>Solenoid - Spring<br>Solenoid - Pneumatic | -    | 4/2<br>5/2, 9/2 | G1/4       |

 cod. **X514** | **X516** - Solenoid valves with coils XMHC 2GD Ex ia, E xt with connector

| Marking  | Temperature   | Version  | Size | Function        | Connection |
|--|---|--|------|-----------------|------------|
| II 2G Ex h IIB/IIC T4 Gb X<br>II 2D Ex h IIIC T130°C Db X IP65 | $-30^{\circ}\text{C} \leq \text{Ta} \leq +50^{\circ}\text{C}$ | Solenoid - Differential<br>Solenoid - Spring<br>Solenoid - Pneumatic | -    | 4/2<br>5/2, 9/2 | G1/4       |

 cod. **X514** | **X516** - Solenoid valves with coils XMH4/H6 2GD Ex ia

| Marking                    | Temperature   | Version  | Size | Function        | Connection |
|----------------------------|---|--|------|-----------------|------------|
| II 2G Ex h IIB/IIC T4 Gb X | $-30^{\circ}\text{C} \leq \text{Ta} \leq +50^{\circ}\text{C} / +85^{\circ}\text{C}$ | Solenoid - Differential<br>Solenoid - Spring<br>Solenoid - Pneumatic | -    | 4/2<br>5/2, 9/2 | G1/4       |

 cod. **X514** | **X516** - Solenoid valves with coils XMB oppure XMC 3GD

| Marking  | Temperature   | Version  | Size | Function        | Connection |
|--|---|--|------|-----------------|------------|
| II 3G Ex h IIC T4 Gc X<br>II 3D Ex h IIIC T120°C Dc X IP65 | $-20^{\circ}\text{C} \leq \text{Ta} \leq +40^{\circ}\text{C}$ | Solenoid - Differential<br>Solenoid - Spring<br>Solenoid - Pneumatic | -    | 4/2<br>5/2, 9/2 | G1/4       |

ATEX ON REQUEST


**SERIES 515 - 517**

 cod. **X515** | **X517** - Valves and solenoid valves without coils

| Marking  | Temperature   | Version   | Size | Function | Connection |
|--|---|---|------|----------|------------|
| II 2G Ex h IIC T5 Gb X<br>II 2D Ex h IIIC T96°C Db X | $-30^{\circ}\text{C} \leq \text{Ta} \leq +50^{\circ}\text{C}$ | Pneum. o Sol. - Differential<br>Pneum. o Sol. - Spring<br>Pneum. o Sol. - Pneumatic | -    | 5/2      | G1/4       |

 cod. **X515** | **X517** - Solenoid valves with coils XME 2GD

| Marking  | Temperature   | Version  | Size | Function | Connection |
|--|---|--|------|----------|------------|
| II 2G Ex h IIC T4 Gb X<br>II 2D Ex h IIIC T135°C Db X IP65 | $-20^{\circ}\text{C} \leq \text{Ta} \leq +40^{\circ}\text{C}$ | Solenoid - Differential<br>Solenoid - Spring<br>Solenoid - Pneumatic | -    | 5/2      | G1/4       |

 cod. **X515** | **X517** - Solenoid valves with coils XMHC 2GD Ex ia, E xt with connector

| Marking  | Temperature  | Version  | Size | Function | Connection |
|--|--|--|------|----------|------------|
| II 2G Ex h IIB/IIC T4 Gb X<br>II 2D Ex h IIIC T130°C Db X IP65 | $-30^{\circ}\text{C} \leq \text{Ta} \leq 50^{\circ}\text{C}$ | Solenoid - Differential<br>Solenoid - Spring<br>Solenoid - Pneumatic | -    | 5/2      | G1/4       |

 cod. **X515** | **X517** - Solenoid valves with coils XMH4/H6 2GD Ex ia

| Marking                    | Temperature   | Version  | Size | Function | Connection |
|----------------------------|---|--|------|----------|------------|
| II 2G Ex h IIB/IIC T4 Gb X | $-30^{\circ}\text{C} \leq \text{Ta} \leq 50^{\circ}\text{C} / 85^{\circ}\text{C}$ | Solenoid - Differential<br>Solenoid - Spring<br>Solenoid - Pneumatic | -    | 5/2      | G1/4       |



ATEX ON REQUEST



**SERIES 515 - 517 (continue)**



cod. **X515** | **X517** - Solenoid valves with coils XMB or XMC 3GD

| Marking  | Temperature        | Version  | Size | Function | Connection |
|--|--------------------|--|------|----------|------------|
| II 3G Ex h IIC T4 Gc X<br>II 3D Ex h IIIC T120°C Dc X IP65 | -20°C ≤ Ta ≤ +40°C | Solenoid - Differential<br>Solenoid - Spring<br>Solenoid - Pneumatic | -    | 5/2      | G1/4       |

**Valves and solenoid valves ISO5599/1**

ATEX ON REQUEST



**SERIES 1000**



cod. **X10\_16\_** | **X10\_18\_** | **X10\_19\_** - Valves

| Marking   | Temperature       | Version                 | Size                    | Function | Connection |
|---|-------------------|-------------------------|-------------------------|----------|------------|
| II 2G Ex h IIC T5 Gb X<br>II 2D Ex h IIIC T100°C Db X | -5°C ≤ Ta ≤ +70°C | Solenoid,<br>Pneumatic. | ISO 1<br>ISO 2<br>ISO 3 | 5/2, 5/3 | -          |

cod. **X1001\_**, **X1051\_** | **X1002\_**, **X1052\_** - Solenoid valves without coils

| Marking  | Temperature       | Version                 | Size                    | Function | Connection |
|--|-------------------|-------------------------|-------------------------|----------|------------|
| II 2G Ex h IIC T6 Gb X<br>II 2D Ex h IIIC T70°C Db X | -5°C ≤ Ta ≤ +50°C | Solenoid,<br>Pneumatic. | ISO 1<br>ISO 2<br>ISO 3 | 5/2, 5/3 | -          |

cod. **X1001\_**, **X1051\_** | **X1002\_**, **X1052\_** - Solenoid valves with coils XME 2GD

| Marking  | Temperature       | Version                 | Size                    | Function | Connection |
|--|-------------------|-------------------------|-------------------------|----------|------------|
| II 2G Ex h IIC T4 Gb X<br>II 2D Ex h IIIC T135°C Db X IP65 | -5°C ≤ Ta ≤ +40°C | Solenoid,<br>Pneumatic. | ISO 1<br>ISO 2<br>ISO 3 | 5/2, 5/3 | -          |

cod. **X1001\_**, **X1051\_** | **X1002\_**, **X1052\_** - Solenoid valves with coils XMB 3GD or XMC 3GD

| Marking  | Temperature       | Version                 | Size                    | Function | Connection |
|--|-------------------|-------------------------|-------------------------|----------|------------|
| II 3G Ex h IIC T4 Gc X<br>II 3D Ex h IIIC T120°C Dc X IP65 | -5°C ≤ Ta ≤ +40°C | Solenoid,<br>Pneumatic. | ISO 1<br>ISO 2<br>ISO 3 | 5/2, 5/3 | -          |

cod. **X1011\_** | **X1012\_** **X1013\_** - Solenoid valves without coils

| Marking  | Temperature       | Version                 | Size                    | Function | Connection |
|--|-------------------|-------------------------|-------------------------|----------|------------|
| II 3G Ex h IIB T6 Gc X<br>II 3D Ex h IIIC T70°C Dc X | -5°C ≤ Ta ≤ +50°C | Solenoid,<br>Pneumatic. | ISO 1<br>ISO 2<br>ISO 3 | 5/2, 5/3 | -          |

cod. **X1011\_** | **X1012\_** | **X1013\_** - Solenoid valves with coils XMB 3GD or XMC 3GD

| Marking  | Temperature       | Version                 | Size                    | Function | Connection |
|--|-------------------|-------------------------|-------------------------|----------|------------|
| II 3G Ex h IIB T4 Gc X<br>II 3D Ex h IIIC T120°C Dc X IP65 | -5°C ≤ Ta ≤ +40°C | Solenoid,<br>Pneumatic. | ISO 1<br>ISO 2<br>ISO 3 | 5/2, 5/3 | -          |

**Accessories**

**Complementary valves**

ATEX ON REQUEST



**SERIES 900**



cod. **X900\_** - Valves

| Marking   | Temperature       | Version      | Size | Function | Connection |
|---|-------------------|--------------|------|----------|------------|
| II 2G Ex h IIC T4 Gb X<br>II 2D Ex h IIIC T120°C Db X | -5°C ≤ Ta ≤ +70°C | All versions | -    | -        | -          |

**Process automation technology stainless steel accessories**

ATEX READY



**STEEL LINE SERIES**



cod. **SS11\_** | **SS12\_** | **SS14\_** | **SS34\_** - H - High temperature

| Marking   | Temperature         | Version      | Size | Function  | Connection                               |
|---|---------------------|--------------|------|---|--|
| II 2G Ex h IIC T3 Gb X<br>II 2D Ex h IIIC T180°C Db X | -10°C ≤ Ta ≤ +150°C | All versions | -    | Flow control<br>Quick exhaust<br>Exhaust flow control | 1/4" NPT - 1/2" NPT<br>3/4" NPT - 1" NPT |

cod. **SS11\_** | **SS12\_** | **SS14\_** | **SS34\_** - L - Low temperature

| Marking   | Temperature        | Version      | Size | Function  | Connection                               |
|---|--------------------|--------------|------|---|--|
| II 2G Ex h IIC T5 Gb X<br>II 2D Ex h IIIC T100°C Db X | -50°C ≤ Ta ≤ +70°C | All versions | -    | Flow control<br>Quick exhaust<br>Exhaust flow control | 1/4" NPT - 1/2" NPT<br>3/4" NPT - 1" NPT |

## Aluminum process automation technology accessories

ATEX READY



### ALUMINUM PROCESS AUTOMATION TECHNOLOGY SERIES


 cod. **A6\_** - H - Accessories

| Marking   | Temperature        | Version      | Size | Function | Connection                               |
|---|--------------------|--------------|------|----------|--|
| II 2G Ex h IIC T5 Gb X<br>II 2D Ex h IIIC T100°C Db X | -30°C ≤ Ta ≤ +70°C | All versions | -    | -        | 1/4" NPT - 1/2" NPT<br>3/4" NPT - 1" NPT |

## Valves and solenoid valves manifold

### Valves and solenoid valves manifold VDMA

ATEX ON REQUEST



### SERIES 2400 VDMA


 cod. **2400\_** - Solenoid valves manifold

| Marking   | Temperature       | Version      | Size | Function           | Connection  |
|---|-------------------|--------------|------|--------------------|-------------|
| II 3G Ex nA IIC T6 Gc IP65<br>II 3D Ex tc IIIC T=85°C Dc IP65 | -5°C ≤ Ta ≤ +50°C | All versions | 18mm | 5/2, 5/3,<br>2x3/2 | G1/8 - G1/4 |

ATEX ON REQUEST



### SERIES 2600 VDMA


 cod. **2600\_** - Solenoid valves manifold

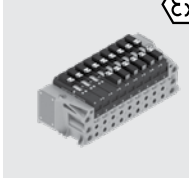
| Marking   | Temperature       | Version      | Size | Function | Connection  |
|---|-------------------|--------------|------|----------|-------------|
| II 3G Ex nA IIC T6 Gc IP65<br>II 3D Ex tc IIIC T=85°C Dc IP65 | -5°C ≤ Ta ≤ +50°C | All versions | 26mm | 5/2, 5/3 | G3/8 - G1/4 |

## Solenoid valves manifold ISO15407-2

ATEX READY



### SERIES 2700


 cod. **2700\_** - Solenoid valves manifold

| Marking  | Temperature        | Version      | Size | Function           | Connection |
|--|--------------------|--------------|------|--------------------|------------|
| II 3G Ex nA IIC T6 Gc X<br>II 3D Ex tc IIIC T80°C Dc X | -10°C ≤ Ta ≤ +50°C | All versions | 26mm | 5/2, 5/3,<br>2x3/2 | G1/4       |

## Solenoid valves manifold

ATEX READY



### SERIES 2200 OPTYMA-S


 cod. **2200\_** - Solenoid valves manifold

| Marking  | Temperature        | Version      | Size   | Function           | Connection   |
|--|--------------------|--------------|--------|--------------------|--------------|
| II 3G Ex nA IIC T6 Gc X<br>II 3D Ex tc IIIC T80°C Dc X | -10°C ≤ Ta ≤ +50°C | All versions | 12,5mm | 5/2, 5/3,<br>2x3/2 | Ø4 - Ø6 - Ø8 |

ATEX READY



### SERIES 2300 ENOVA


 cod. **2300\_** - Solenoid valves manifold

| Marking  | Temperature       | Version      | Size   | Function           | Connection   |
|--|-------------------|--------------|--------|--------------------|--------------|
| II 3G Ex nA IIC T5 Gc IP65<br>II 3D Ex tc IIIC T=100°C Dc IP65 | -5°C ≤ Ta ≤ +50°C | All versions | 12,5mm | 5/2, 5/3,<br>2x3/2 | Ø4 - Ø6 - Ø8 |



## Air Treatment

## Modular FRL

ATEX ON REQUEST



## SERIES 1700

## cod. X17001... - Filter

| Marking  | Temperature  | Version           | Size | Connection  |
|--|--|-------------------|------|-------------|
| II 2G Ex h IIB T5 Gb X<br>II 2D Ex h IIIB T90°C Db X | $-5^{\circ}\text{C} \leq \text{Ta} \leq +50^{\circ}\text{C}$ | <b>Metal body</b> | 1    | G1/8 - G1/4 |

## cod. X17008... - Coalescing filter

| Marking  | Temperature  | Version           | Size | Connection  |
|--|--|-------------------|------|-------------|
| II 2G Ex h IIB T5 Gb X<br>II 2D Ex h IIIB T90°C Db X | $-5^{\circ}\text{C} \leq \text{Ta} \leq +50^{\circ}\text{C}$ | <b>Metal body</b> | 1    | G1/8 - G1/4 |

## cod. X17002... - X17022... - Pressure regulator

| Marking  | Temperature  | Version           | Size | Connection  |
|--|--|-------------------|------|-------------|
| II 2G Ex h IIB T5 Gb X<br>II 2D Ex h IIIB T90°C Db X | $-5^{\circ}\text{C} \leq \text{Ta} \leq +50^{\circ}\text{C}$ | <b>Metal body</b> | 1    | G1/8 - G1/4 |

## cod. X170B2... - X170M2... - Manifold pressure regulators

| Marking  | Temperature  | Version           | Size | Connection  |
|--|--|-------------------|------|-------------|
| II 2G Ex h IIB T5 Gb X<br>II 2D Ex h IIIB T90°C Db X | $-5^{\circ}\text{C} \leq \text{Ta} \leq +50^{\circ}\text{C}$ | <b>Metal body</b> | 1    | G1/8 - G1/4 |

## cod. X17003... - Lubricator

| Marking  | Temperature  | Version           | Size | Connection  |
|--|--|-------------------|------|-------------|
| II 2G Ex h IIB T5 Gb X<br>II 2D Ex h IIIB T90°C Db X | $-5^{\circ}\text{C} \leq \text{Ta} \leq +50^{\circ}\text{C}$ | <b>Metal body</b> | 1    | G1/8 - G1/4 |

## cod. X17004... - Filter regulator

| Marking  | Temperature  | Version           | Size | Connection  |
|--|--|-------------------|------|-------------|
| II 2G Ex h IIB T5 Gb X<br>II 2D Ex h IIIB T90°C Db X | $-5^{\circ}\text{C} \leq \text{Ta} \leq +50^{\circ}\text{C}$ | <b>Metal body</b> | 1    | G1/8 - G1/4 |

## cod. X17110M2 - X17120 - Progressive start-up valve

| Marking  | Temperature  | Version           | Size | Connection |
|--|--|-------------------|------|------------|
| II 2G Ex h IIB T5 Gb X<br>II 2D Ex h IIIB T90°C Db X | $-5^{\circ}\text{C} \leq \text{Ta} \leq +50^{\circ}\text{C}$ | <b>Metal body</b> | 1    | G1/4       |

## cod. X17030... - Shut-off valve

| Marking  | Temperature  | Version           | Size | Connection  |
|--|--|-------------------|------|-------------|
| II 2G Ex h IIB T5 Gb X<br>II 2D Ex h IIIB T90°C Db X | $-5^{\circ}\text{C} \leq \text{Ta} \leq +50^{\circ}\text{C}$ | <b>Metal body</b> | 1    | G1/8 - G1/4 |

## cod. X171S2... - High sensitive air pressure regulator

| Marking  | Temperature  | Version           | Size | Connection |
|--|--|-------------------|------|------------|
| II 2G Ex h IIB T5 Gb X<br>II 2D Ex h IIIB T90°C Db X | $-5^{\circ}\text{C} \leq \text{Ta} \leq +50^{\circ}\text{C}$ | <b>Metal body</b> | 1    | G1/4       |

## cod. X17202... - X17222 - Pressure regulator

| Marking  | Temperature  | Version             | Size | Connection   |
|--|--|---------------------|------|--------------|
| II 2G Ex h IIB T5 Gb X<br>II 2D Ex h IIIB T90°C Db X | $-5^{\circ}\text{C} \leq \text{Ta} \leq +50^{\circ}\text{C}$ | <b>All versions</b> | 2    | G1/4<br>G3/8 |

## cod. X17210M2 - X17220 - Progressive start-up valve

| Marking  | Temperature  | Version             | Size | Connection |
|--|--|---------------------|------|------------|
| II 2G Ex h IIB T5 Gb X<br>II 2D Ex h IIIB T90°C Db X | $-5^{\circ}\text{C} \leq \text{Ta} \leq +50^{\circ}\text{C}$ | <b>All versions</b> | 2    | G3/8       |

## cod. X17230... - Shut-off valve

| Marking  | Temperature  | Version             | Size | Connection |
|--|--|---------------------|------|------------|
| II 2G Ex h IIB T5 Gb X<br>II 2D Ex h IIIB T90°C Db X | $-5^{\circ}\text{C} \leq \text{Ta} \leq +50^{\circ}\text{C}$ | <b>All versions</b> | 2    | G3/8       |

## cod. X17212... - High sensitive air pressure regulator

| Marking  | Temperature  | Version             | Size | Connection |
|--|--|---------------------|------|------------|
| II 2G Ex h IIB T5 Gb X<br>II 2D Ex h IIIB T90°C Db X | $-5^{\circ}\text{C} \leq \text{Ta} \leq +50^{\circ}\text{C}$ | <b>All versions</b> | 2    | G3/8       |



ATEX ON REQUEST


**SERIES 1700 (continue)**
**cod. X17302... - X17322 - Pressure regulator**

| Marking  | Temperature       | Version      | Size | Connection  |
|--|-------------------|--------------|------|-------------|
| II 2G Ex h IIB T5 Gb X<br>II 2D Ex h IIIB T90°C Db X | -5°C ≤ Ta ≤ +50°C | All versions | 3    | G3/8 - G1/2 |

**cod. X17310M2 - X17320 - Progressive start-up valve**

| Marking  | Temperature       | Version      | Size | Connection |
|--|-------------------|--------------|------|------------|
| II 2G Ex h IIB T5 Gb X<br>II 2D Ex h IIIB T90°C Db X | -5°C ≤ Ta ≤ +50°C | All versions | 3    | G1/2       |

**cod. X17330... - Shut-off valve**

| Marking  | Temperature       | Version      | Size | Connection |
|--|-------------------|--------------|------|------------|
| II 2G Ex h IIB T5 Gb X<br>II 2D Ex h IIIB T90°C Db X | -5°C ≤ Ta ≤ +50°C | All versions | 3    | G1/2       |

**cod. X173S2... - X173P2... - High sensitive air pressure regulator**

| Marking  | Temperature       | Version      | Size | Connection |
|--|-------------------|--------------|------|------------|
| II 2G Ex h IIB T5 Gb X<br>II 2D Ex h IIIB T90°C Db X | -5°C ≤ Ta ≤ +50°C | All versions | 3    | G1/2       |

**cod. X17401... - Filter**

| Marking  | Temperature       | Version      | Size | Connection |
|--|-------------------|--------------|------|------------|
| II 2G Ex h IIB T5 Gb X<br>II 2D Ex h IIIB T90°C Db X | -5°C ≤ Ta ≤ +50°C | All versions | 4    | G1         |

**cod. X17408... - Coalescing filter**

| Marking  | Temperature       | Version      | Size | Connection |
|--|-------------------|--------------|------|------------|
| II 2G Ex h IIB T5 Gb X<br>II 2D Ex h IIIB T90°C Db X | -5°C ≤ Ta ≤ +50°C | All versions | 4    | G1         |

**cod. X17402... - Pressure regulator**

| Marking  | Temperature       | Version      | Size | Connection |
|--|-------------------|--------------|------|------------|
| II 2G Ex h IIB T5 Gb X<br>II 2D Ex h IIIB T90°C Db X | -5°C ≤ Ta ≤ +50°C | All versions | 4    | G1         |

**cod. X17403... - Lubricator**

| Marking  | Temperature       | Version      | Size | Connection |
|--|-------------------|--------------|------|------------|
| II 2G Ex h IIB T5 Gb X<br>II 2D Ex h IIIB T90°C Db X | -5°C ≤ Ta ≤ +50°C | All versions | 4    | G1         |

**cod. X17410M2 - X17420 - Progressive start-up valve**

| Marking  | Temperature       | Version      | Size | Connection |
|--|-------------------|--------------|------|------------|
| II 2G Ex h IIB T5 Gb X<br>II 2D Ex h IIIB T90°C Db X | -5°C ≤ Ta ≤ +50°C | All versions | 4    | G1         |

**cod. X17430... - Shut-off valve**

| Marking  | Temperature       | Version      | Size | Connection |
|--|-------------------|--------------|------|------------|
| II 2G Ex h IIB T5 Gb X<br>II 2D Ex h IIIB T90°C Db X | -5°C ≤ Ta ≤ +50°C | All versions | 4    | G1         |

**cod. X17101... - Filter**

| Marking  | Temperature       | Version            | Size | Connection  |
|--|-------------------|--------------------|------|-------------|
| II 3G Ex h IIB T5 Gc X<br>II 3D Ex h IIIB T90°C Dc X | -5°C ≤ Ta ≤ +50°C | Technopolymer body | 1    | G1/8 - G1/4 |

**cod. X17108... - Coalescing filter**

| Marking  | Temperature       | Version            | Size | Connection  |
|--|-------------------|--------------------|------|-------------|
| II 3G Ex h IIB T5 Gc X<br>II 3D Ex h IIIB T90°C Dc X | -5°C ≤ Ta ≤ +50°C | Technopolymer body | 1    | G1/8 - G1/4 |

**cod. X17109... - X17129... - Panel mounting pressure regulator**

| Marking  | Temperature       | Version            | Size | Connection  |
|--|-------------------|--------------------|------|-------------|
| II 3G Ex h IIB T5 Gc X<br>II 3D Ex h IIIB T90°C Dc X | -5°C ≤ Ta ≤ +50°C | Technopolymer body | 1    | G1/8 - G1/4 |

**cod. X17102... - X17122... - Pressure regulator**

| Marking  | Temperature       | Version            | Size | Connection  |
|--|-------------------|--------------------|------|-------------|
| II 3G Ex h IIB T5 Gc X<br>II 3D Ex h IIIB T90°C Dc X | -5°C ≤ Ta ≤ +50°C | Technopolymer body | 1    | G1/8 - G1/4 |





ATEX ON REQUEST



## SERIES 1700 (continue)

## cod. X17103... - Lubricator

| Marking  | Temperature  | Version            | Size | Connection  |
|--|--|--------------------|------|-------------|
| II 3G Ex h IIB T5 Gc X<br>II 3D Ex h IIIB T90°C Dc X | $-5^{\circ}\text{C} \leq \text{Ta} \leq +50^{\circ}\text{C}$ | Technopolymer body | 1    | G1/8 - G1/4 |

## cod. X17104... - Filter regulator

| Marking  | Temperature  | Version            | Size | Connection  |
|--|--|--------------------|------|-------------|
| II 3G Ex h IIB T5 Gc X<br>II 3D Ex h IIIB T90°C Dc X | $-5^{\circ}\text{C} \leq \text{Ta} \leq +50^{\circ}\text{C}$ | Technopolymer body | 1    | G1/8 - G1/4 |

## cod. X17130... - Shut-off valve

| Marking  | Temperature  | Version            | Size | Connection |
|--|--|--------------------|------|------------|
| II 3G Ex h IIB T5 Gc X<br>II 3D Ex h IIIB T90°C Dc X | $-5^{\circ}\text{C} \leq \text{Ta} \leq +50^{\circ}\text{C}$ | Technopolymer body | 1    | G1/4       |

## cod. X17201... - Filter

| Marking  | Temperature  | Version      | Size | Connection   |
|--|--|--------------|------|--------------|
| II 3G Ex h IIB T5 Gc X<br>II 3D Ex h IIIB T90°C Dc X | $-5^{\circ}\text{C} \leq \text{Ta} \leq +50^{\circ}\text{C}$ | All versions | 2    | G1/4<br>G3/8 |

## cod. X17208... - Coalescing filter

| Marking  | Temperature  | Version      | Size | Connection  |
|--|--|--------------|------|-------------|
| II 3G Ex h IIB T5 Gc X<br>II 3D Ex h IIIB T90°C Dc X | $-5^{\circ}\text{C} \leq \text{Ta} \leq +50^{\circ}\text{C}$ | All versions | 2    | G1/4 - G3/8 |

## cod. X17203... - Lubricator

| Marking  | Temperature  | Version      | Size | Connection  |
|--|--|--------------|------|-------------|
| II 3G Ex h IIB T5 Gc X<br>II 3D Ex h IIIB T90°C Dc X | $-5^{\circ}\text{C} \leq \text{Ta} \leq +50^{\circ}\text{C}$ | All versions | 2    | G1/4 - G3/8 |

## cod. X17204... - Filter regulator

| Marking  | Temperature  | Version      | Size | Connection  |
|--|--|--------------|------|-------------|
| II 3G Ex h IIB T5 Gc X<br>II 3D Ex h IIIB T90°C Dc X | $-5^{\circ}\text{C} \leq \text{Ta} \leq +50^{\circ}\text{C}$ | All versions | 2    | G1/4 - G3/8 |

## cod. X17301... - Filter

| Marking  | Temperature  | Version      | Size | Connection  |
|--|--|--------------|------|-------------|
| II 3G Ex h IIB T5 Gc X<br>II 3D Ex h IIIB T90°C Dc X | $-5^{\circ}\text{C} \leq \text{Ta} \leq +50^{\circ}\text{C}$ | All versions | 3    | G3/8 - G1/2 |

## cod. X17308... - Coalescing filter

| Marking  | Temperature  | Version      | Size | Connection  |
|--|--|--------------|------|-------------|
| II 3G Ex h IIB T5 Gc X<br>II 3D Ex h IIIB T90°C Dc X | $-5^{\circ}\text{C} \leq \text{Ta} \leq +50^{\circ}\text{C}$ | All versions | 3    | G3/8 - G1/2 |

## cod. X17303... - Lubricator

| Marking  | Temperature  | Version      | Size | Connection  |
|--|--|--------------|------|-------------|
| II 3G Ex h IIB T5 Gc X<br>II 3D Ex h IIIB T90°C Dc X | $-5^{\circ}\text{C} \leq \text{Ta} \leq +50^{\circ}\text{C}$ | All versions | 3    | G3/8 - G1/2 |

## cod. X17304... - Filter regulator

| Marking  | Temperature  | Version      | Size | Connection  |
|--|--|--------------|------|-------------|
| II 3G Ex h IIB T5 Gc X<br>II 3D Ex h IIIB T90°C Dc X | $-5^{\circ}\text{C} \leq \text{Ta} \leq +50^{\circ}\text{C}$ | All versions | 3    | G3/8 - G1/2 |



ATEX READY



## AIRPLUS SERIES

## cod. T171... - N171... | T172... - N172... - P172... | T173... - N173... - P173...

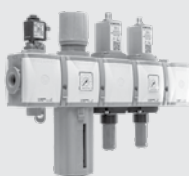
| Marking  | Temperature  | Version      | Size  | Function                                     | Connection                 |
|--|--|--------------|-------|--|----------------------------|
| II 3G Ex h IIC T5 Gc X<br>II 3D Ex h IIIC T98°C Dc X | $-5^{\circ}\text{C} \leq \text{Ta} \leq +50^{\circ}\text{C}$ | Polymer Bowl | 1-2-3 | All functions except electric shut-off valve | G1/8 - G1/4<br>G3/8 - G1/2 |

## cod. P174..

| Marking   | Temperature  | Version      | Size | Function                                     | Connection |
|---|--|--------------|------|--|------------|
| II 3G Ex h IIC T4 Gc X<br>II 3D Ex h IIIC T115°C Dc X | $-5^{\circ}\text{C} \leq \text{Ta} \leq +50^{\circ}\text{C}$ | Polymer Bowl | 4    | All functions except electric shut-off valve | G1         |

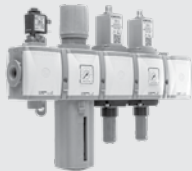
## cod. P172...T - L172...T | P173...T - L173...T

| Marking   | Temperature  | Version             | Size  | Function                                     | Connection                 |
|---|--|---------------------|-------|--|----------------------------|
| II 2G Ex h IIC T4 Gb X<br>II 2D Ex h IIIC T135°C Db X | $-30^{\circ}\text{C} \leq \text{Ta} \leq +80^{\circ}\text{C}$<br>$-40^{\circ}\text{C} \leq \text{Ta} \leq +80^{\circ}\text{C}$ | Metal body and bowl | 1-2-3 | All functions except electric shut-off valve | G1/8 - G1/4<br>G3/8 - G1/2 |





ATEX READY


**AIRPLUS SERIES (continue)**


| cod. P174..T - L174..T   |  |                     |       |  |                            |
|--|--|---------------------|-------|--|----------------------------|
| Marking  | Temperature                              | Version             | Size  | Function                                     | Connection                 |
| II 2G Ex h IIC T3 Gb X<br>II 2D Ex h IIIC T150°C Db X                                    | -30°C ≤ Ta ≤ +80°C<br>-40°C ≤ Ta ≤ +80°C | Metal body and bowl | 4     | All functions except electric shut-off valve | G1                         |
| cod. T171... - N171...   T172... - N172...   T173... - N173... - VE - bobina 15mm        |  |                     |       |  |                            |
| Marking  | Temperature                              | Version             | Size  | Function                                     | Connection                 |
| II 3G Ex h IIC T4 Gc X<br>II 3D Ex h IIIC T115°C Dc X                                    | -5°C ≤ Ta ≤ +50°C                        | Polymer body        | 1-2-3 | VE Electric shut-off valve                   | G1/8 - G1/4<br>G3/8 - G1/2 |
| cod. T171... - N171...   T172... - N172...   T173... - N173... - VE - bobina 22mm e 30mm |  |                     |       |  |                            |
| Marking  | Temperature                              | Version             | Size  | Function                                     | Connection                 |
| II 3G Ex h IIC T5 Gc X<br>II 3D Ex h IIIC T98°C Dc X                                     | -5°C ≤ Ta ≤ +50°C                        | Polymer body        | 1-2-3 | VE Electric shut-off valve                   | G1/8 - G1/4<br>G3/8 - G1/2 |
| cod. P172...VE...   P173...VE... - VE  |  |                     |       |  |                            |
| Marking  | Temperature                              | Version             | Size  | Function                                     | Connection                 |
| II 3G Ex h IIC T4 Gc X<br>II 3D Ex h IIIC T135°C Dc X                                    | -5°C ≤ Ta ≤ +50°C                        | Metal body          | 1-2-3 | VE Electric shut-off valve                   | G3/8 - G1/2                |
| cod. P174...VE... - VE   |  |                     |       |  |                            |
| Marking  | Temperature                              | Version             | Size  | Function                                     | Connection                 |
| II 3G Ex h IIC T3 Gc X<br>II 3D Ex h IIIC T150°C Dc X                                    | -5°C ≤ Ta ≤ +50°C                        | Metal body          | 4     | VE Electric shut-off valve                   | G1                         |

ATEX READY


**SERIES 1700 STEEL LINE**


| cod. SS174... - SF174...  |                     |  |      |                             |  |
|---|---------------------|--|------|-----------------------------|--|
| Marking   | Temperature         | Version  | Size | Connection                  |  |
| II 2G Ex h IIC T4 Gb X<br>II 2D Ex h IIIC T130°C Db X                     | -30°C ≤ Ta ≤ +80°C  | Standard   | 4    | 3/4" NPT - 1" NPT<br>G1     |  |
| cod. SS174... - SF174... - L  |                     |  |      |                             |  |
| Marking   | Temperature         | Version  | Size | Connection                  |  |
| II 2G Ex h IIC T4 Gb X<br>II 2D Ex h IIIC T130°C Db X                     | -50°C ≤ Ta ≤ +80°C  | Low temperature                                      | 4    | 3/4" NPT - 1" NPT<br>G1     |  |
| cod. SS174... - SF174... - H  |                     |  |      |                             |  |
| Marking   | Temperature         | Version  | Size | Connection                  |  |
| II 2G Ex h IIC T3 Gb X<br>II 2D Ex h IIIC T200°C Db X                     | -5°C ≤ Ta ≤ +150°C  | High temperature                                     | 4    | 3/4" NPT - 1" NPT<br>G1     |  |
| cod. SS174... - SF174... - S - SR   |                     |  |      |                             |  |
| Marking   | Temperature         | Version  | Size | Connection                  |  |
| II 2G Ex h IIC T4 Gb X<br>II 2D Ex h IIIC T120°C Db X                     | -5°C ≤ Ta ≤ +70°C   | Automatic drain and reduced automatic drain versions | 4    | 3/4" NPT - 1" NPT<br>G1     |  |
| cod. SS174... - SF174... - SM174 - Z                                      |                     |  |      |                             |  |
| Marking   | Temperature         | Version  | Size | Connection                  |  |
| II 2G Ex h IIC T4 Gb X<br>II 2D Ex h IIIC T130°C Db X                     | -60°C ≤ Ta ≤ +80°C  | Silicone seals version                               | 4    | 3/4" NPT - 1" NPT<br>G1     |  |
| cod. SS174... - SF174... - EF   |                     |  |      |                             |  |
| Marking   | Temperature         | Version  | Size | Connection                  |  |
| II 2G Ex h IIC T3 Gb X<br>II 2D Ex h IIIC T150°C Db X                     | -40°C ≤ Ta ≤ +100°C | EPDM FDA seals version                               | 4    | 3/4" NPT - 1" NPT<br>G1     |  |
| cod. SS172... - SF172... - SM172   SS173... - SF173... - SM173 - Standard |                     |  |      |                             |  |
| Marking   | Temperature         | Version  | Size | Connection                  |  |
| II 2G Ex h IIC T4 Gb X<br>II 2D Ex h IIIC T110°C Db X                     | -30°C ≤ Ta ≤ +80°C  | Standard   | 2    | 1/4" NPT - 3/8" NPT<br>G1/4 |  |
|   |                     |  | 3    | 1/4" NPT - 1/2" NPT<br>G1/2 |  |
| cod. SS172... - SF172... - SM172   SS173... - SF173... - SM173 - L        |                     |  |      |                             |  |
| Marking   | Temperature         | Version  | Size | Connection                  |  |
| II 2G Ex h IIC T4 Gb X<br>II 2D Ex h IIIC T110°C Db X                     | -50°C ≤ Ta ≤ +80°C  | Low temperature                                      | 2    | 1/4" NPT - 3/8" NPT<br>G1/4 |  |
|   |                     |  | 3    | 1/4" NPT - 1/2" NPT<br>G1/2 |  |





ATEX READY



**SERIES 1700 STEEL LINE (continue)**



| cod. SS172... - SF172... - SM172   SS173... - SF173... - SM173 - H      |  |  |      |                             |
|---|--|--|------|-----------------------------|
| Marking   | Temperature  | Version  | Size | Connection                  |
| II 2G Ex h IIC T3 Gb X<br>II 2D Ex h IIIC T180°C Db X                   | $-5^{\circ}\text{C} \leq \text{Ta} \leq +150^{\circ}\text{C}$  | High temperature   | 2    | 1/4" NPT - 3/8" NPT<br>G1/4 |
|   |  |  | 3    | 1/4" NPT - 1/2" NPT<br>G1/2 |
| cod. SS172... - SF172... - SM172   SS173... - SF173... - SM173 - S - SR |  |  |      |                             |
| Marking   | Temperature  | Version  | Size | Connection                  |
| II 2G Ex h IIC T5 Gb X<br>II 2D Ex h IIIC T100°C Db X                   | $-5^{\circ}\text{C} \leq \text{Ta} \leq +70^{\circ}\text{C}$   | Automatic drain and<br>reduced automatic drain<br>versions | 2    | 1/4" NPT - 3/8" NPT<br>G1/4 |
|   |  |  | 3    | 1/4" NPT - 1/2" NPT<br>G1/2 |
| cod. SS172... - SF172... - SM172   SS173... - SF173... - SM173 - Z      |  |  |      |                             |
| Marking   | Temperature  | Version  | Size | Connection                  |
| II 2G Ex h IIC T4 Gb X<br>II 2D Ex h IIIC T110°C Db X                   | $-60^{\circ}\text{C} \leq \text{Ta} \leq +80^{\circ}\text{C}$  | Silicone seals version                                     | 2    | 1/4" NPT - 3/8" NPT<br>G1/4 |
|   |  |  | 3    | 1/4" NPT - 1/2" NPT<br>G1/2 |
| cod. SS172... - SF172... - SM172   SS173... - SF173... - SM173 - EF     |  |  |      |                             |
| Marking   | Temperature  | Version  | Size | Connection                  |
| II 2G Ex h IIC T4 Gb X<br>II 2D Ex h IIIC T130°C Db X                   | $-40^{\circ}\text{C} \leq \text{Ta} \leq +100^{\circ}\text{C}$ | EPDM FDA seals version                                     | 2    | 1/4" NPT - 3/8" NPT<br>G1/4 |
|   |  |  | 3    | 1/4" NPT - 1/2" NPT<br>G1/2 |

**Volume Booster**

ATEX READY



**FLOWPLUS SERIES**



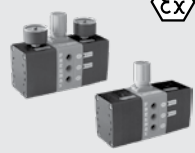
| cod. SA17_VB   SS17_VB                                |  |                    |      |                      |
|---|--|--------------------|------|----------------------|
| Marking   | Temperature  | Version            | Size | Connection           |
| II 2G Ex h IIC T5 Gb X<br>II 2D Ex h IIIC T90°C Db X  | $-30^{\circ}\text{C} \leq \text{Ta} \leq +80^{\circ}\text{C}$  | Standard<br>L<br>Z | 3    | 1/4" NPT<br>1/2" NPT |
|   | $-50^{\circ}\text{C} \leq \text{Ta} \leq +80^{\circ}\text{C}$  |                    |      |                      |
|   | $-60^{\circ}\text{C} \leq \text{Ta} \leq +80^{\circ}\text{C}$  |                    |      |                      |
| cod. SA17_VB   SS17_VB                                |  |                    |      |                      |
| Marking   | Temperature  | Version            | Size | Connection           |
| II 2G Ex h IIC T3 Gb X<br>II 2D Ex h IIIC T165°C Db X | $-5^{\circ}\text{C} \leq \text{Ta} \leq +150^{\circ}\text{C}$  | H                  | 3    | 1/4" NPT<br>1/2" NPT |
|   |  |                    |      |                      |
| cod. SA17_VB   SS17_VB                                |  |                    |      |                      |
| Marking   | Temperature  | Version            | Size | Connection           |
| II 2G Ex h IIC T4 Gb X<br>II 2D Ex h IIIC T115°C Db X | $-40^{\circ}\text{C} \leq \text{Ta} \leq +100^{\circ}\text{C}$ | EF                 | 3    | 1/4" NPT<br>1/2" NPT |
|   |  |                    |      |                      |
| cod. SA17_VB   SS17_VB                                |  |                    |      |                      |
| Marking   | Temperature  | Version            | Size | Connection           |
| II 2G Ex h IIC T5 Gb X<br>II 2D Ex h IIIC T90°C Db X  | $-30^{\circ}\text{C} \leq \text{Ta} \leq +80^{\circ}\text{C}$  | Standard<br>L<br>Z | 4    | 3/4" NPT<br>1" NPT   |
|   | $-50^{\circ}\text{C} \leq \text{Ta} \leq +80^{\circ}\text{C}$  |                    |      |                      |
|   | $-60^{\circ}\text{C} \leq \text{Ta} \leq +80^{\circ}\text{C}$  |                    |      |                      |
| cod. SA17_VB   SS17_VB                                |  |                    |      |                      |
| Marking   | Temperature  | Version            | Size | Connection           |
| II 2G Ex h IIC T5 Gb X<br>II 2D Ex h IIIC T90°C Db X  | $-5^{\circ}\text{C} \leq \text{Ta} \leq +150^{\circ}\text{C}$  | H                  | 4    | 3/4" NPT<br>1" NPT   |
|   |  |                    |      |                      |
| cod. SA17_VB   SS17_VB                                |  |                    |      |                      |
| Marking   | Temperature  | Version            | Size | Connection           |
| II 2G Ex h IIC T4 Gb X<br>II 2D Ex h IIIC T115°C Db X | $-40^{\circ}\text{C} \leq \text{Ta} \leq +100^{\circ}\text{C}$ | EF                 | 4    | 3/4" NPT<br>1" NPT   |
|   |  |                    |      |                      |

**Pressure boosters**

ATEX READY



**SERIES P+**



| cod. MDTP40 - Technopolymer Pressure Booster         |   |                            |      |            |
|--|---|----------------------------|------|------------|
| Marking  | Temperature   | Version                    | Size | Connection |
| II 3G Ex h IIB T6 Gc X<br>II 3D Ex h IIIB T85°C Dc X | $-5^{\circ}\text{C} \leq \text{Ta} \leq 50^{\circ}\text{C}$ | adjustable/ not adjustable | 40   | G1/4       |

## Pneumatic actuation

### Cylinders according to international standards

#### Microcylinders ISO6432

ATEX ON REQUEST



#### SERIES 1200 ROLLED END COVER VERSION (MIR)



##### cod. X1280

| Marking   | Temperature  | Version     | Bore (mm) | Stroke (mm) |
|---|--|-------------|-----------|-------------|
| II 2G Ex h IIC T5...T3 Gb X<br>II 2D Ex h IIIC T100°C...T140°C Db X | -5°C ≤ Ta ≤ 30°C (T5/T100°C)<br>-5°C ≤ Ta ≤ 65°C (T4/T135°C)<br>-5°C ≤ Ta ≤ 70°C (T3/T140°C) | NBR version | Ø8...Ø32  | 15...500    |

##### cod. X1280...T

| Marking  | Temperature  | Version                      | Bore (mm) | Stroke (mm) |
|--|--|------------------------------|-----------|-------------|
| II 2G Ex h IIC T6...T3 Gb X<br>II 2D Ex h IIIC T85°C...T165°C Db X | -5°C ≤ Ta ≤ 40°C (T6/T85°C)<br>-5°C ≤ Ta ≤ 55°C (T5/T100°C)<br>-5°C ≤ Ta ≤ 90°C (T4/T135°C)<br>-5°C ≤ Ta ≤ 120°C (T3/T165°C) | HNBR Version<br>NON Magnetic | Ø8...Ø32  | 15...500    |

##### cod. X1280...M.T

| Marking  | Temperature   | Version                  | Bore (mm) | Stroke (mm) |
|--|---|--------------------------|-----------|-------------|
| II 2G Ex h IIC T6...T4 Gb X<br>II 2D Ex h IIIC T85°C...T125°C Db X | -5°C ≤ Ta ≤ 40°C (T6/T85°C)<br>-5°C ≤ Ta ≤ 55°C (T5/T100°C)<br>-5°C ≤ Ta ≤ 80°C (T4/T125°C) | HNBR Version<br>Magnetic | Ø8...Ø32  | 15...500    |

##### cod. X1280...V

| Marking  | Temperature  | Version                     | Bore (mm) | Stroke (mm) |
|--|--|-----------------------------|-----------|-------------|
| II 2G Ex h IIC T6...T3 Gb X<br>II 2D Ex h IIIC T85°C...T195°C Db X | -5°C ≤ Ta ≤ 40°C (T6/T85°C)<br>-5°C ≤ Ta ≤ 55°C (T5/T100°C)<br>-5°C ≤ Ta ≤ 90°C (T4/T135°C)<br>-5°C ≤ Ta ≤ 150°C (T3/T195°C) | FPM Version<br>NON Magnetic | Ø8...Ø32  | 15...500    |

##### cod. X1280...M.V

| Marking  | Temperature   | Version                 | Bore (mm) | Stroke (mm) |
|--|---|-------------------------|-----------|-------------|
| II 2G Ex h IIC T6...T4 Gb X<br>II 2D Ex h IIIC T85°C...T125°C Db X | -5°C ≤ Ta ≤ 40°C (T6/T85°C)<br>-5°C ≤ Ta ≤ 55°C (T5/T100°C)<br>-5°C ≤ Ta ≤ 80°C (T4/T125°C) | FPM Version<br>Magnetic | Ø8...Ø32  | 15...500    |

ATEX ON REQUEST



#### SERIES 1200 STEEL LINE



##### cod. X12X

| Marking   | Temperature  | Version     | Bore (mm) | Stroke (mm) |
|---|--|-------------|-----------|-------------|
| II 2G Ex h IIC T5...T4 Gb X<br>II 2D Ex h IIIC T100°C...T135°C Db X | -5°C ≤ Ta ≤ 35°C (T5/T100°C)<br>-5°C ≤ Ta ≤ 70°C (T4/T135°C) | NBR Version | Ø16...Ø63 | 15...500    |

##### cod. X12X...PN

| Marking   | Temperature  | Version   | Bore (mm) | Stroke (mm) |
|---|--|---|-----------|-------------|
| II 2G Ex h IIC T5...T4 Gb X<br>II 2D Ex h IIIC T100°C...T135°C Db X | -5°C ≤ Ta ≤ 35°C (T5/T100°C)<br>-5°C ≤ Ta ≤ 70°C (T4/T135°C) | PUR Ø16 ÷ Ø32 adjustable<br>pneumatic cushioning version,<br>NON Magnetic | Ø16...Ø63 | 15...500    |

##### cod. X12X...PM

| Marking   | Temperature  | Version  | Bore (mm) | Stroke (mm) |
|---|--|--|-----------|-------------|
| II 2G Ex h IIC T5...T3 Gb X<br>II 2D Ex h IIIC T100°C...T145°C Db X | -5°C ≤ Ta ≤ 35°C (T5/T100°C)<br>-5°C ≤ Ta ≤ 70°C (T4/T135°C)<br>-5°C ≤ Ta ≤ 80°C (T3/T145°C) | PUR Ø16 ÷ Ø32: non adjustable<br>cushioning - Magnetic,<br>Ø40 ÷ Ø63 non adjustable<br>cushioning; adjustable<br>pneumatic cushioning - Magnetic | Ø16...Ø63 | 15...500    |

##### cod. X12X...V.N

| Marking   | Temperature  | Version                     | Bore (mm) | Stroke (mm) |
|---|--|-----------------------------|-----------|-------------|
| II 2G Ex h IIC T5...T2 Gb X<br>II 2D Ex h IIIC T100°C...T215°C Db X | -5°C ≤ Ta ≤ 40°C (T5/T100°C)<br>-5°C ≤ Ta ≤ 75°C (T4/T135°C)<br>-5°C ≤ Ta ≤ 140°C (T3/T200°C)<br>-5°C ≤ Ta ≤ 150°C (T2/T215°C) | FPM Version<br>NON Magnetic | Ø16...Ø63 | 15...500    |

##### cod. X12X...V.M

| Marking   | Temperature  | Version                 | Bore (mm) | Stroke (mm) |
|---|--|-------------------------|-----------|-------------|
| II 2G Ex h IIC T5...T3 Gb X<br>II 2D Ex h IIIC T100°C...T140°C Db X | -5°C ≤ Ta ≤ 40°C (T5/T100°C)<br>-5°C ≤ Ta ≤ 75°C (T4/T135°C)<br>-5°C ≤ Ta ≤ 80°C (T3/T140°C) | FPM Version<br>Magnetic | Ø16...Ø63 | 15...500    |



## Cylinders CNOMO-CETOP-ISO

ATEX ON REQUEST



**SERIES 1303 - 1304 - 1305 - 1306 - 1307 - 1308 - 1315**



| cod. X1303   X1304   X1305   X1306   X1307   X1308   X1315          |  |                             |            |             |
|---|--|-----------------------------|------------|-------------|
| Marking   | Temperature  | Version                     | Bore (mm)  | Stroke (mm) |
| II 2G Ex h IIC T5...T3 Gb X<br>II 2D Ex h IIIC T100°C...T140°C Db X | -5°C ≤ Ta ≤ 30°C (T5/T100°C)<br>-5°C ≤ Ta ≤ 65°C (T4/T135°C)<br>-5°C ≤ Ta ≤ 70°C (T3/T140°C)                                   | NBR Version                 | Ø32...Ø320 | 25...1000   |
| cod. X1303   X1304   X1305...V                                      |  |                             |            |             |
| Marking   | Temperature  | Version                     | Bore (mm)  | Stroke (mm) |
| II 2G Ex h IIC T5...T2 Gb X<br>II 2D Ex h IIIC T100°C...T225°C Db X | -5°C ≤ Ta ≤ 25°C (T5/T100°C)<br>-5°C ≤ Ta ≤ 60°C (T4/T135°C)<br>-5°C ≤ Ta ≤ 125°C (T3/T200°C)<br>-5°C ≤ Ta ≤ 150°C (T2/T225°C) | FPM Version<br>NON Magnetic | Ø32...Ø200 | 25...1000   |
| cod. X1306   X1307   X1308...V                                      |  |                             |            |             |
| Marking   | Temperature  | Version                     | Bore (mm)  | Stroke (mm) |
| II 2G Ex h IIC T5...T3 Gb X<br>II 2D Ex h IIIC T100°C...T150°C Db X | -5°C ≤ Ta ≤ 30°C (T5/T100°C)<br>-5°C ≤ Ta ≤ 65°C (T4/T135°C)<br>-5°C ≤ Ta ≤ 80°C (T3/T150°C)                                   | FPM Version<br>Magnetic     | Ø32...Ø200 | 25...1000   |

## Cylinders ISO 15552

ATEX ON REQUEST



**SERIES 1319 - 1320 - 1321**



| cod. X1319   X1320   X1321   |   |                             |            |             |
|--|---|-----------------------------|------------|-------------|
| Marking  | Temperature   | Version                     | Bore (mm)  | Stroke (mm) |
| II 2G Ex h IIC T6...T4 Gb X<br>II 2D Ex h IIIC T85°C...T115°C Db X | -5°C ≤ Ta ≤ 40°C (T6/T85°C)<br>-5°C ≤ Ta ≤ 55°C (T5/T100°C)<br>-5°C ≤ Ta ≤ 70°C (T4/T115°C) | NBR Version                 | Ø32...Ø200 | 25...1000   |
| cod. X1319   X1320...V   |   |                             |            |             |
| Marking  | Temperature   | Version                     | Bore (mm)  | Stroke (mm) |
| II 2G Ex h IIC T4 Gb X<br>II 2D Ex h IIIC T125°C Db X              | -5°C ≤ Ta ≤ 80°C (T4/T125°C)  | FPM Version<br>Magnetic     | Ø32...Ø200 | 25...1000   |
| cod. X1321...V   |   |                             |            |             |
| Marking  | Temperature   | Version                     | Bore (mm)  | Stroke (mm) |
| II 2G Ex h IIC T3 Gb X<br>II 2D Ex h IIIC T195°C Db X              | -5°C ≤ Ta ≤ 150°C (T3/T195°C)   | FPM Version<br>NON Magnetic | Ø32...Ø200 | 25...1000   |

ATEX ON REQUEST



**SERIES 1348 - 1349 - 1350**



| cod. X1348   X1349   X1350  |  |              |           |             |
|---|--|--------------|-----------|-------------|
| Marking   | Temperature  | Version      | Bore (mm) | Stroke (mm) |
| II 2G Ex h IIC T4...T3 Gb X<br>II 2D Ex h IIIC T135°C...T155°C Db X | -5°C ≤ Ta ≤ 50°C (T4/T135°C)<br>-5°C ≤ Ta ≤ 70°C (T3/T155°C) | All versions | Ø32...Ø63 | 25...320    |

ATEX ON REQUEST



**ECOPLUS SERIES**



| cod. X1396   X1397   X1398   |   |             |            |             |
|--|---|-------------|------------|-------------|
| Marking  | Temperature   | Version     | Bore (mm)  | Stroke (mm) |
| II 2G Ex h IIC T6...T4 Gb X<br>II 2D Ex h IIIC T85°C...T120°C Db X | -5°C ≤ Ta ≤ 35°C (T6/T85°C)<br>-5°C ≤ Ta ≤ 50°C (T5/T100°C)<br>-5°C ≤ Ta ≤ 70°C (T4/T120°C) | NBR Version | Ø32...Ø100 | 25...1000   |
| cod. X1396   X1397   X1398...P                                     |   |             |            |             |
| Marking  | Temperature   | Version     | Bore (mm)  | Stroke (mm) |
| II 2G Ex h IIC T4 Gb X<br>II 2D Ex h IIIC T130°C Db X              | -30°C ≤ Ta ≤ 80°C (T4/T130°C)   | PUR Version | Ø32...Ø100 | 25...1000   |

ATEX ON REQUEST


**ECOLIGHT SERIES**

| cod. X1390   X1391   X1392  |  |  |            |             |
|---|--|--|------------|-------------|
| Marking   | Temperature  | Version                                      | Bore (mm)  | Stroke (mm) |
| II 2G Ex h IIC T5...T4 Gb X<br>II 2D Ex h IIIC T100°C...T135°C Db X | -5°C ≤ Ta ≤ 35°C (T5/T100°C)<br>-5°C ≤ Ta ≤ 70°C (T4/T135°C) | <b>NBR Version</b>                           | Ø32...Ø200 | 25...1000   |
| cod. X1390   X1391   X1392...P                                      |  |  |            |             |
| Marking   | Temperature  | Version                                      | Bore (mm)  | Stroke (mm) |
| II 2G Ex h IIC T3 Gb X<br>II 2D Ex h IIIC T140°C Db X               | -30°C ≤ Ta ≤ 80°C (T3/T140°C)                                | <b>PUR Version</b>                           | Ø32...Ø200 | 25...1000   |
| cod. X1390   X1391...V  |  |  |            |             |
| Marking   | Temperature  | Version                                      | Bore (mm)  | Stroke (mm) |
| II 2G Ex h IIC T4 Gb X<br>II 2D Ex h IIIC T120°C Db X               | -5°C ≤ Ta ≤ 80°C (T4/120°C)                                  | <b>FPM Version<br/>Magnetic</b>              | Ø32...Ø200 | 25...1000   |
| cod. X1392...V  |  |  |            |             |
| Marking   | Temperature  | Version                                      | Bore (mm)  | Stroke (mm) |
| II 2G Ex h IIC T3 Gb X<br>II 2D Ex h IIIC T190°C Db X               | -5°C ≤ Ta ≤ 150°C (T3/190°C)                                 | <b>FPM Version<br/>NON Magnetic</b>          | Ø32...Ø200 | 25...1000   |
| cod. X1390   X1391   X1392...R                                      |  |  |            |             |
| Marking   | Temperature  | Version                                      | Bore (mm)  | Stroke (mm) |
| II 2G Ex h IIC T3 Gb X<br>II 2D Ex h IIIC T165°C Db X               | -10°C ≤ Ta ≤ 80°C (T3/165°C)                                 | <b>Version with<br/>metallic rod scraper</b> | Ø32...Ø100 | 25...1000   |
| cod. X1390   X1391   X1392...Q                                      |  |  |            |             |
| Marking   | Temperature  | Version                                      | Bore (mm)  | Stroke (mm) |
| II 2G Ex h IIC T3 Gb X<br>II 2D Ex h IIIC T150°C Db X               | -20°C ≤ Ta ≤ 80°C (T3/150°C)                                 | <b>Version with<br/>plastic rod scraper</b>  | Ø32...Ø100 | 25...1000   |
| cod. X1390   X1391   X1392...L                                      |  |  |            |             |
| Marking   | Temperature  | Version                                      | Bore (mm)  | Stroke (mm) |
| II 2G Ex h IIC T3 Gb X<br>II 2D Ex h IIIC T155°C Db X               | -50°C ≤ Ta ≤ 80°C (T3/155°C)                                 | <b>Low temperature version</b>               | Ø32...Ø200 | 25...1000   |



ATEX ON REQUEST


**SERIES INOX STEEL LINE**

| cod. X1393   X1394  |  |                                     |            |             |
|---|--|-------------------------------------|------------|-------------|
| Marking   | Temperature  | Version                             | Bore (mm)  | Stroke (mm) |
| II 2G Ex h IIC T5...T3 Gb X<br>II 2D Ex h IIIC T100°C...T150°C Db X | -30°C ≤ Ta ≤ 30°C (T5/T100°C)<br>-30°C ≤ Ta ≤ 65°C (T4/T135°C)<br>-30°C ≤ Ta ≤ 80°C (T3/T150°C)                                | <b>PUR Version</b>                  | Ø32...Ø100 | 25...1000   |
| cod. X1393...V  |  |                                     |            |             |
| Marking   | Temperature  | Version                             | Bore (mm)  | Stroke (mm) |
| II 2G Ex h IIC T5...T3 Gb X<br>II 2D Ex h IIIC T100°C...T150°C Db X | -5°C ≤ Ta ≤ 30°C (T5/T100°C)<br>-5°C ≤ Ta ≤ 65°C (T4/T135°C)<br>-5°C ≤ Ta ≤ 80°C (T3/T150°C)                                   | <b>FPM Version<br/>Magnetic</b>     | Ø32...Ø100 | 25...1000   |
| cod. X1394...V  |  |                                     |            |             |
| Marking   | Temperature  | Version                             | Bore (mm)  | Stroke (mm) |
| II 2G Ex h IIC T5...T2 Gb X<br>II 2D Ex h IIIC T100°C...T220°C Db X | -5°C ≤ Ta ≤ 30°C (T5/T100°C)<br>-5°C ≤ Ta ≤ 65°C (T4/T135°C)<br>-5°C ≤ Ta ≤ 130°C (T3/T200°C)<br>-5°C ≤ Ta ≤ 150°C (T2/T220°C) | <b>FPM Version<br/>NON Magnetic</b> | Ø32...Ø100 | 25...1000   |


**Hydro-pneumatic cylinders ISO1552**

ATEX ON REQUEST


**SERIES 1450-1463**

| cod. X1450   X1463   |   |                     |           |             |
|--|---|---------------------|-----------|-------------|
| Marking  | Temperature   | Version             | Bore (mm) | Stroke (mm) |
| II 2G Ex h IIC T6...T4 Gb X<br>II 2D Ex h IIIC T85°C...T115°C Db X | -5°C ≤ Ta ≤ 40°C (T6/T85°C)<br>-5°C ≤ Ta ≤ 55°C (T5/T100°C)<br>-5°C ≤ Ta ≤ 70°C (T4/T115°C) | <b>All versions</b> | Ø50-Ø63   | 50...450    |



## Non standard cylinders

### Flat profiled tube

ATEX ON REQUEST



#### ECOFLAT SERIES



cod. X1370 | X1371 | X1372 | X1373

| Marking  | Temperature   | Version      | Bore (mm) | Stroke (mm) |
|--|---|--------------|-----------|-------------|
| II 2G Ex h IIC T6...T4 Gb X<br>II 2D Ex h IIIC T85°C...T110°C Db X | -5°C ≤ Ta ≤ 45°C (T6/T85°C)<br>-5°C ≤ Ta ≤ 60°C (T5/T100°C)<br>-5°C ≤ Ta ≤ 70°C (T4/T110°C) | All versions | Ø25...Ø63 | 25...320    |

### Compact cylinders

ATEX ON REQUEST



#### SERIES 1500



cod. X15...

| Marking  | Temperature   | Version     | Bore (mm)  | Stroke (mm) |
|--|---|-------------|------------|-------------|
| II 2G Ex h IIC T6...T4 Gb X<br>II 2D Ex h IIIC T85°C...T125°C Db X | -5°C ≤ Ta ≤ 30°C (T6/T85°C)<br>-5°C ≤ Ta ≤ 45°C (T5/T100°C)<br>-5°C ≤ Ta ≤ 70°C (T4/T125°C) | NBR Version | Ø20...Ø100 | 5...50      |

cod. X15...T

| Marking  | Temperature  | Version                      | Bore (mm)  | Stroke (mm) |
|--|--|------------------------------|------------|-------------|
| II 2G Ex h IIC T6...T3 Gb X<br>II 2D Ex h IIIC T85°C...T175°C Db X | -5°C ≤ Ta ≤ 30°C (T6/T85°C)<br>-5°C ≤ Ta ≤ 45°C (T5/T100°C)<br>-5°C ≤ Ta ≤ 120°C (T3/T175°C) | HNBR Version<br>NON Magnetic | Ø20...Ø100 | 5...50      |

cod. X15...M.T

| Marking  | Temperature   | Version                  | Bore (mm)  | Stroke (mm) |
|--|---|--------------------------|------------|-------------|
| II 2G Ex h IIC T6...T4 Gb X<br>II 2D Ex h IIIC T85°C...T135°C Db X | -5°C ≤ Ta ≤ 30°C (T6/T85°C)<br>-5°C ≤ Ta ≤ 45°C (T5/T100°C)<br>-5°C ≤ Ta ≤ 80°C (T4/T135°C) | HNBR Version<br>Magnetic | Ø20...Ø100 | 5...50      |

cod. X15...V

| Marking  | Temperature  | Version                     | Bore (mm)  | Stroke (mm) |
|--|--|-----------------------------|------------|-------------|
| II 2G Ex h IIC T6...T3 Gb X<br>II 2D Ex h IIIC T85°C...T200°C Db X | -5°C ≤ Ta ≤ 35°C (T6/T85°C)<br>-5°C ≤ Ta ≤ 50°C (T5/T100°C)<br>-5°C ≤ Ta ≤ 85°C (T4/T135°C)<br>-5°C ≤ Ta ≤ 150°C (T3/T200°C) | FPM Version<br>NON Magnetic | Ø20...Ø100 | 5...50      |

cod. X15...M.V

| Marking  | Temperature   | Version                 | Bore (mm)  | Stroke (mm) |
|--|---|-------------------------|------------|-------------|
| II 2G Ex h IIC T6...T4 Gb X<br>II 2D Ex h IIIC T85°C...T130°C Db X | -5°C ≤ Ta ≤ 30°C (T6/T85°C)<br>-5°C ≤ Ta ≤ 50°C (T5/T100°C)<br>-5°C ≤ Ta ≤ 80°C (T4/T130°C) | FPM Version<br>Magnetic | Ø20...Ø100 | 5...50      |

ATEX ON REQUEST



#### EUROPE SERIES



cod. X156\_ | X158\_...

| Marking  | Temperature  | Version     | Bore (mm)  | Stroke (mm) |
|--|--|-------------|------------|-------------|
| II 2G Ex h IIC T6...T4 Gb X<br>II 2D Ex h IIIC T85°C...T135°C Db X | -30°C ≤ Ta ≤ 30°C (T6/T85°C)<br>-30°C ≤ Ta ≤ 45°C (T5/T100°C)<br>-30°C ≤ Ta ≤ 80°C (T4/T135°C) | PUR Version | Ø12...Ø100 | 5...500     |

cod. X157\_ | X159\_....\_(4-5-6)

| Marking  | Temperature  | Version                      | Bore (mm)  | Stroke (mm) |
|--|--|------------------------------|------------|-------------|
| II 2G Ex h IIC T6...T3 Gb X<br>II 2D Ex h IIIC T85°C...T175°C Db X | -5°C ≤ Ta ≤ 30°C (T6/T85°C)<br>-5°C ≤ Ta ≤ 45°C (T5/T100°C)<br>-5°C ≤ Ta ≤ 80°C (T4/T135°C)<br>-5°C ≤ Ta ≤ 120°C (T3/T175°C) | HNBR Version<br>NON Magnetic | Ø12...Ø100 | 5...500     |

cod. X157\_ | X159\_....\_(1-2-3)

| Marking  | Temperature   | Version                  | Bore (mm)  | Stroke (mm) |
|--|---|--------------------------|------------|-------------|
| II 2G Ex h IIC T6...T4 Gb X<br>II 2D Ex h IIIC T85°C...T135°C Db X | -5°C ≤ Ta ≤ 30°C (T6/T85°C)<br>-5°C ≤ Ta ≤ 45°C (T5/T100°C)<br>-5°C ≤ Ta ≤ 80°C (T4/T135°C) | HNBR Version<br>Magnetic | Ø12...Ø100 | 5...500     |

## Compact cylinders ISO21287

ATEX ON REQUEST



### ECOMPACT SERIES



#### cod. X154\_(0-1) | X155\_(0-1)....\_(1÷6)

| Marking  | Temperature   | Version            | Bore (mm)  | Stroke (mm) |
|--|---|--------------------|------------|-------------|
| II 2G Ex h IIC T6...T4 Gb X<br>II 2D Ex h IIIC T85°C...T110°C Db X | -5°C ≤ Ta ≤ 45°C (T6/T85°C)<br>-5°C ≤ Ta ≤ 60°C (T5/T100°C)<br>-5°C ≤ Ta ≤ 70°C (T4/T110°C) | <b>NBR Version</b> | Ø20...Ø100 | 5...500     |

#### cod. X154\_(4-5) | X155\_(4-5)....\_(1÷6)

| Marking  | Temperature  | Version            | Bore (mm)  | Stroke (mm) |
|--|--|--------------------|------------|-------------|
| II 2G Ex h IIC T6...T4 Gb X<br>II 2D Ex h IIIC T85°C...T120°C Db X | -30°C ≤ Ta ≤ 45°C (T6/T85°C)<br>-30°C ≤ Ta ≤ 60°C (T5/T100°C)<br>-30°C ≤ Ta ≤ 80°C (T4/T120°C) | <b>PUR Version</b> | Ø20...Ø100 | 5...500     |

#### cod. X154\_(6-7) | X155\_(6-7)....\_(4-5-6)

| Marking  | Temperature  | Version                             | Bore (mm)  | Stroke (mm) |
|--|--|-------------------------------------|------------|-------------|
| II 2G Ex h IIC T6...T3 Gb X<br>II 2D Ex h IIIC T85°C...T190°C Db X | -5°C ≤ Ta ≤ 45°C (T6/T85°C)<br>-5°C ≤ Ta ≤ 60°C (T5/T100°C)<br>-5°C ≤ Ta ≤ 95°C (T4/T135°C)<br>-5°C ≤ Ta ≤ 150°C (T3/T190°C) | <b>FPM Version<br/>NON Magnetic</b> | Ø20...Ø100 | 5...500     |

#### cod. X154\_(6-7) | X155\_(6-7)....\_(1-2-3)

| Marking  | Temperature   | Version                         | Bore (mm)  | Stroke (mm) |
|--|---|---------------------------------|------------|-------------|
| II 2G Ex h IIC T6...T4 Gb X<br>II 2D Ex h IIIC T85°C...T120°C Db X | -5°C ≤ Ta ≤ 45°C (T6/T85°C)<br>-5°C ≤ Ta ≤ 60°C (T5/T100°C)<br>-5°C ≤ Ta ≤ 80°C (T4/T120°C) | <b>FPM Version<br/>Magnetic</b> | Ø20...Ø100 | 5...500     |

ATEX ON REQUEST



### ECOMPACT-S SERIES



#### cod. X154\_(0-1) | X155\_(0-1)....\_(1-4)

| Marking  | Temperature   | Version            | Bore (mm) | Stroke (mm) |
|--|---|--------------------|-----------|-------------|
| II 2G Ex h IIC T6...T4 Gb X<br>II 2D Ex h IIIC T85°C...T110°C Db X | -5°C ≤ Ta ≤ 45°C (T6/T85°C)<br>-5°C ≤ Ta ≤ 60°C (T5/T100°C)<br>-5°C ≤ Ta ≤ 70°C (T4/T110°C) | <b>NBR Version</b> | Ø32...Ø63 | 5...500     |

#### cod. X154\_(4-5) | X155\_(4-5)....\_(1-4)

| Marking  | Temperature  | Version            | Bore (mm) | Stroke (mm) |
|--|--|--------------------|-----------|-------------|
| II 2G Ex h IIC T6...T4 Gb X<br>II 2D Ex h IIIC T85°C...T120°C Db X | -30°C ≤ Ta ≤ 45°C (T6/T85°C)<br>-30°C ≤ Ta ≤ 60°C (T5/T100°C)<br>-30°C ≤ Ta ≤ 80°C (T4/T120°C) | <b>PUR Version</b> | Ø32...Ø63 | 5...500     |

#### cod. X154\_(6-7) | X155\_(6-7)....\_4

| Marking  | Temperature  | Version                             | Bore (mm) | Stroke (mm) |
|--|--|-------------------------------------|-----------|-------------|
| II 2G Ex h IIC T6...T3 Gb X<br>II 2D Ex h IIIC T85°C...T190°C Db X | -5°C ≤ Ta ≤ 45°C (T6/T85°C)<br>-5°C ≤ Ta ≤ 60°C (T5/T100°C)<br>-5°C ≤ Ta ≤ 95°C (T4/T135°C)<br>-5°C ≤ Ta ≤ 150°C (T3/T190°C) | <b>FPM Version<br/>NON Magnetic</b> | Ø32...Ø63 | 5...500     |

#### cod. X154\_(6-7) | X155\_(6-7)....\_1

| Marking  | Temperature   | Version                         | Bore (mm) | Stroke (mm) |
|--|---|---------------------------------|-----------|-------------|
| II 2G Ex h IIC T6...T3 Gb X<br>II 2D Ex h IIIC T85°C...T190°C Db X | -5°C ≤ Ta ≤ 45°C (T6/T85°C)<br>-5°C ≤ Ta ≤ 60°C (T5/T100°C)<br>-5°C ≤ Ta ≤ 80°C (T4/T120°C) | <b>FPM Version<br/>Magnetic</b> | Ø32...Ø63 | 5...500     |

## Guided compact cylinders

ATEX ON REQUEST



### SERIES 6100



#### cod. X6100

| Marking   | Temperature  | Version            | Bore (mm) | Stroke (mm) |
|---|--|--------------------|-----------|-------------|
| II 2G Ex h IIC T4...T3 Gb X<br>II 2D Ex h IIIC T135°C...T140°C Db X | -5°C ≤ Ta ≤ 65°C (T4/T135°C)<br>-5°C ≤ Ta ≤ 70°C (T3/T140°C) | <b>NBR Version</b> | Ø12...Ø63 | 10...200    |



ATEX ON REQUEST



**SERIES 6101**



cod. **X6101**

| Marking   | Temperature  | Version            | Bore (mm)  | Stroke (mm)     |
|---|--|--------------------|------------|-----------------|
| II 2G Ex h IIC T6...T5 Gb X<br>II 2D Ex h IIIC T85°C...T95°C Db X | -5°C ≤ Ta ≤ 60°C (T6/T85°C)<br>-5°C ≤ Ta ≤ 70°C (T5/T95°C) | <b>NBR Version</b> | <b>Ø80</b> | <b>25...200</b> |

**Slide units**

ATEX ON REQUEST



**SERIES 6200**



cod. **X6200**

| Marking   | Temperature  | Version            | Bore (mm)        | Stroke (mm)     |
|---|--|--------------------|------------------|-----------------|
| II 2G Ex h IIC T4...T3 Gb X<br>II 2D Ex h IIIC T135°C...T145°C Db X | -5°C ≤ Ta ≤ 60°C (T4/T135°C)<br>-5°C ≤ Ta ≤ 70°C (T3/T145°C) | <b>NBR Version</b> | <b>Ø10...Ø32</b> | <b>10...100</b> |

ATEX ON REQUEST



**SERIES 6210**



cod. **X6210**

| Marking  | Temperature   | Version            | Bore (mm)        | Stroke (mm)     |
|--|---|--------------------|------------------|-----------------|
| II 2G Ex h IIC T6...T4 Gb X<br>II 2D Ex h IIIC T85°C...T105°C Db X | -5°C ≤ Ta ≤ 50°C (T6/T85°C)<br>-5°C ≤ Ta ≤ 65°C (T5/T100°C)<br>-5°C ≤ Ta ≤ 70°C (T4/T105°C) | <b>NBR Version</b> | <b>Ø10...Ø25</b> | <b>25...200</b> |

**Rodless cylinders**

**Standard**

ATEX ON REQUEST



**SERIES 1605**



cod. **X1605**

| Marking   | Temperature  | Version            | Bore (mm)        | Stroke (mm) |
|---|--|--------------------|------------------|-------------|
| II 2G Ex h IIC T5...T4 Gb X<br>II 2D Ex h IIIC T100°C...T130°C Db X | -5°C ≤ Ta ≤ 40°C (T5/T100°C)<br>-5°C ≤ Ta ≤ 70°C (T4/T130°C) | <b>NBR Version</b> | <b>Ø16...Ø63</b> | <b>6m</b>   |

**Magnetic sensors**

ATEX ON REQUEST



**SERIES SA**



cod. **X1500 | X1600**

| Marking   | Temperature      | Version                    | Bore (mm)   | Stroke (mm)                               |
|---|------------------|----------------------------|-------------|---|
| II 3G Ex nA IIC T5 Gc<br>II 3D Ex tc IIIC T100°C Dc | -5°C ≤ Ta ≤ 40°C | <b>Sensors Hall effect</b> | <b>12mm</b> | <b>M8 cable<br/>2 or 3<br/>connectors</b> |

cod. **X1500 | X1600**

| Marking   | Temperature      | Version             | Bore (mm)   | Stroke (mm)                               |
|---|------------------|---------------------|-------------|---|
| II 3G Ex nC IIC T5 Gc<br>II 3D Ex tc IIIC T100°C Dc | -5°C ≤ Ta ≤ 40°C | <b>Sensors REED</b> | <b>12mm</b> | <b>M8 cable<br/>2 or 3<br/>connectors</b> |

**Miniaturised magnetic sensors**

ATEX ON REQUEST



**SERIES SR**



cod. **X1580**

| Marking  | Temperature        | Version                    | Bore (mm)  | Stroke (mm)                            |
|--|--------------------|----------------------------|------------|--|
| II 3G Ex ic IIB T4 Gc<br>II 3D Ex ic IIIC T135°C | -10°C ≤ Ta ≤ +70°C | <b>Sensors Hall effect</b> | <b>5mm</b> | <b>Cable<br/>2 or 3<br/>connectors</b> |



**PNEUMAX**

**PNEUMAX S.p.A.**

Via Cascina Barbellina, 10

24050 Lurano (BG) - Italy

P. +39 035 41 92 777

[info@pneumaxspa.com](mailto:info@pneumaxspa.com)

[www.pneumaxspa.com](http://www.pneumaxspa.com)