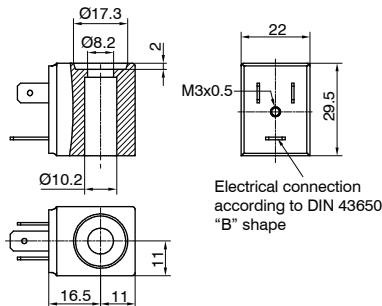


Solenoid coil 22 mm Ø10, type MB



Ordering code

**MBT**

VOLTAGE
4: 12 VDC
5: 24 VDC
9: 24 VDC (2W)
56: 24 VAC (50-60 Hz)
57: 110 VAC (50-60 Hz)
58: 230 VAC (50-60 Hz)



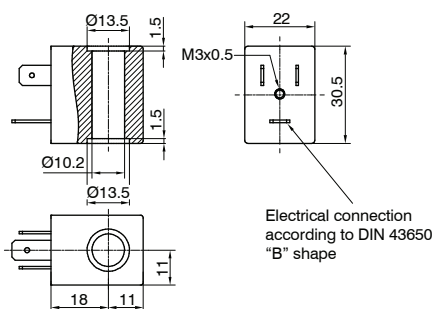
Operational characteristics

Class of insulation	Tolerance on voltage	IP Rating with connector fitted	Electrical connection	Weight (gr.)
F	±10%	IP65	DIN43650 B industrial	53

Solenoid coil 22 mm Ø10, type XMB



CE II 3GD Ex nA IIC T5, T4 Gc  
CE II 3GD Ex tc IIIC T85°C, T120°C Dc IP65



Ordering code

**XMBT**

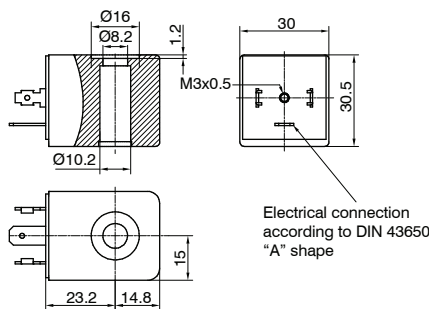
VOLTAGE
4: 12 VDC
5: 24 VDC
9: 24 VDC (50-60 Hz)
56: 24 VAC (50-60 Hz)
57: 110 VAC (50-60 Hz)
58: 230 VAC (50-60 Hz)



Operational characteristics

Class of insulation	Tolerance on voltage	IP Rating with connector fitted	Electrical connection	Weight (gr.)
F	±10%	IP65	DIN43650 B industrial	54

Solenoid coil 30 mm Ø10, type MC



Ordering code

**MCT**

VOLTAGE
4: 12 VDC
5: 24 VDC
9: 24 VDC (2W)
56: 24 VAC (50-60 Hz)
57: 110 VAC (50-60 Hz)
58: 230 VAC (50-60 Hz)



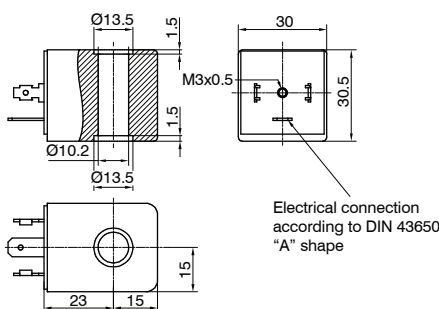
Operational characteristics

Class of insulation	Tolerance on voltage	IP Rating with connector fitted	Electrical connection	Weight (gr.)
F	±10%	IP65	DIN43650 A	113

Solenoid coil 30 mm Ø10, type XMC



CE II 3GD Ex nA IIC T5, T4 Gc  
CE II 3GD Ex tc IIIC T85°C, T120°C Dc IP65



Ordering code

**XMCT**

VOLTAGE
4: 12 VDC
5: 24 VDC
9: 24 VDC (50-60 Hz)
56: 24 VAC (50-60 Hz)
57: 110 VAC (50-60 Hz)
58: 230 VAC (50-60 Hz)



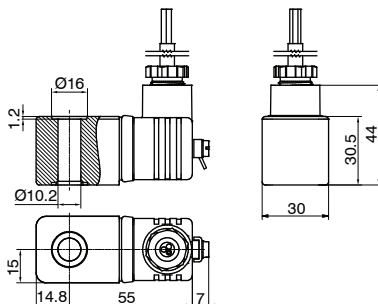
Operational characteristics

Class of insulation	Tolerance on voltage	IP Rating with connector fitted	Electrical connection	Weight (gr.)
F	±10%	IP65	DIN43650 A	117

**Solenoid coil 30 mm Ø10, type XME**



CE II 2GD Ex mb IIC T6, T5, T4 Gb  
CE II 2GD Ex mb IIIC T85°C, T100°C, T135°C Db IP65



Ordering code

**XME**

VOLTAGE

- 5: 24 VDC
- 56: 24 VAC (50-60 Hz)
- 57: 110 VAC (50-60 Hz)
- 58: 230 VAC (50-60 Hz)



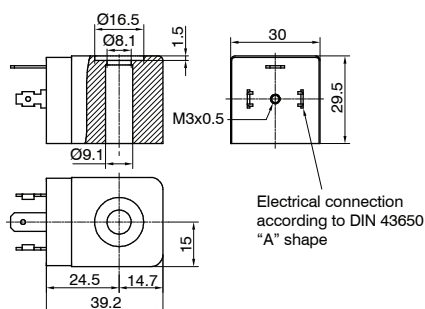
**Operational characteristics**

Class of insulation	Tolerance on voltage	IP Rating with connector fitted	Electrical connection	Weight (gr.)
H	±10%	IP65	Cavo 3 mt.	325

**Solenoid coil 30 mm Ø9, type XMHB EX ia**



CE II 3G Ex nA IIC T5 Gc  
CE II 3D Ex tc IIIC T95°C Dc IP65



Ordering code

**XMHB**

VOLTAGE

- 4: 32 VDC T4
- 6: 32 VDC T6



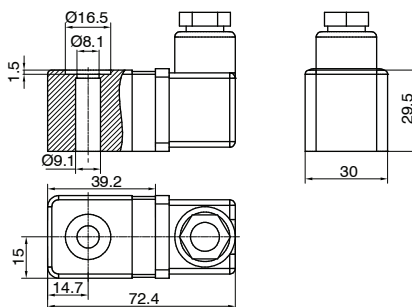
**Operational characteristics**

Class of insulation	Tolerance on voltage	IP Rating with connector fitted	Electrical connection	Weight (gr.)
F	±10%	IP65	DIN43650 A	111

**Solenoid coil 30 mm Ø9, type XMHC EX ia 32 VDC T6**



CE II 2G Ex ia IIB/IIC T6, T4 Ga  
CE II 2D Ex t IIIC T80°C, T130°C Db IP65



Ordering code

**XMHC**



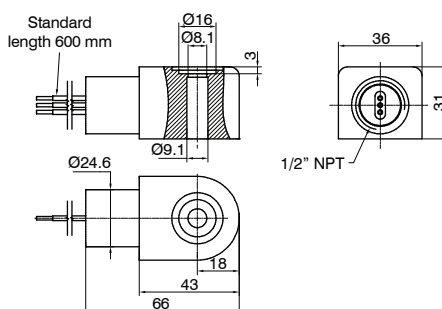
**Operational characteristics**

Class of insulation	Tolerance on voltage	Grado di protezione	Weight (gr.)
F	±10%	IP65	136

**Solenoid coil 36 mm Ø9, type ML FM APPROVED**



Class I, Division 2, Groups A, B, C, D, T4, Ta=60°C  
Suitable for Class II, III, Division 2, Groups E, F, G, T4, Ta=60°C hazardous (classified) locations.



Ordering code

**ML**

VOLTAGE

- 4: 12 VDC
- 5: 24 VDC
- 39: 120 VAC
- 41: 240 VAC

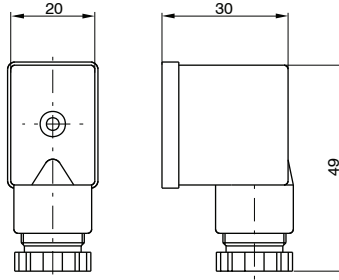


**Operational characteristics**

Class of insulation	Tolerance on voltage	IP Rating with connector fitted	Electrical connection (mm)	Weight (gr.)
H	±10%	IP65	600	150

PROCESS AUTOMATION TECHNOLOGY

Connector 22 mm ATEX DIN43650 B industrial



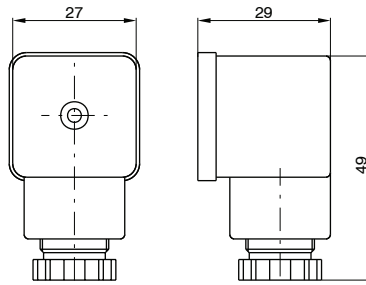
Ordering code

**X305.11.00**



Weight gr. 21

Connector 30 mm ATEX DIN43650 A



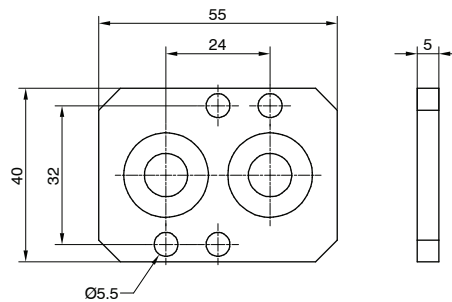
Ordering code

**X300.11.00**



Weight gr. 25

30 mm solenoid base adaptor



Ordering code

**514.05**

Weight gr. 25