

Handling

Pneumatic gripper clamps with fully adjustment opening angle



HANDLING



Quick set-up



No flow valve required

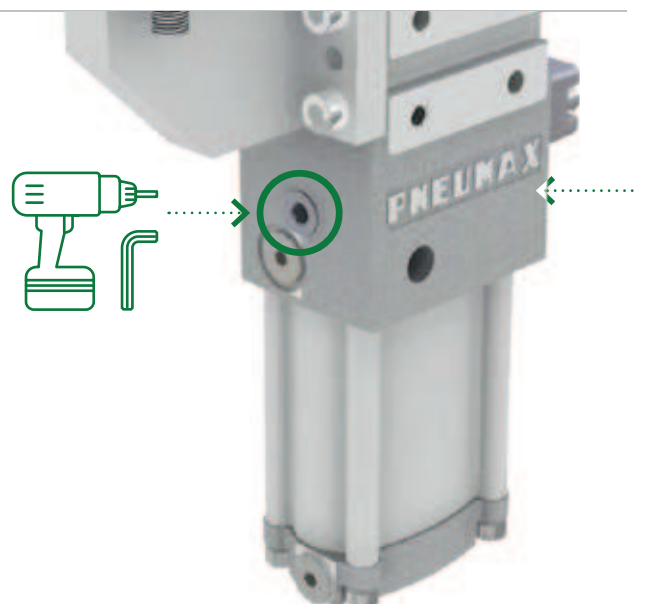
Toggle-joint mechanism

Compact gripper clamps with toggle-joint mechanism, to secure the workpiece clamping in case of air loss: the jaws remain locked in closed position.

Mainly used to **hold the workpiece on edges or through holes – from above or below – and to transfer parts.**

The shortest set-up time in the market

Easy field adjustment of the opening angle, from the rear or front side of the gripper clamp with the shortest set-up time in the market.



Handling products

J-Series

Complete reliability of the angle adjustment over time integrated mechanism secures the adjusted position and prevents any sliding or opening angle displacement. A **retain mechanism** secures the **adjustment tool in its seat** and prevents the Allen wrench to fall down during the adjustment procedure.

Even without air, the clamp can be toggle-locked through the adjustment means.



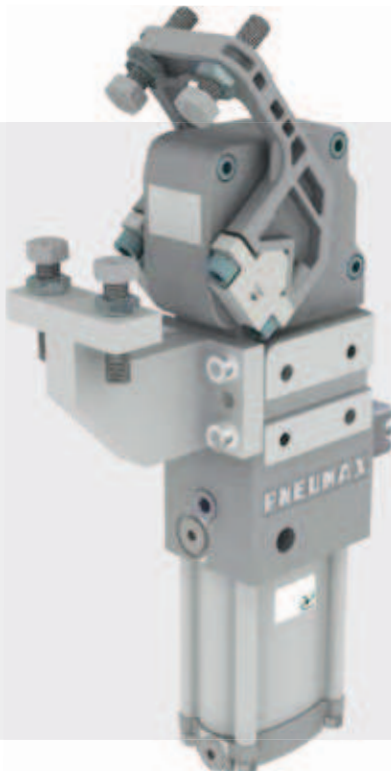
Sealed roller bearings

Lightweight design, which does not compromise the stiffness and strength of the housings.

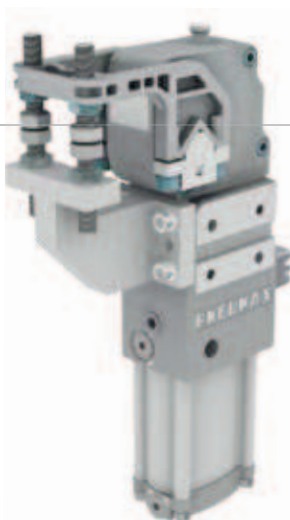
Equipped with sealed roller bearings, to ensure a high protection degree against contaminants > **fully encapsulated housing**.

No flow valve required

No slamming towards the opening position due to an optimal integrated cushioning system.



J-Series



Pneumatic gripper clamps

Technical features

Manual release button to open the linkage when air pressure is removed during setup. **Pneumatic ports on both sides** of the cylinder.

Operating features

Operating pressure from 2 to 8 bar / from 30 to 115 psi

Lubrication all the devices are lubricated for life at the factory. Inline air lubrication isn't required

Functional charts

Size 40 mm

• **Cycle time for max opening angle**
< 0.8 s NO flow valve required

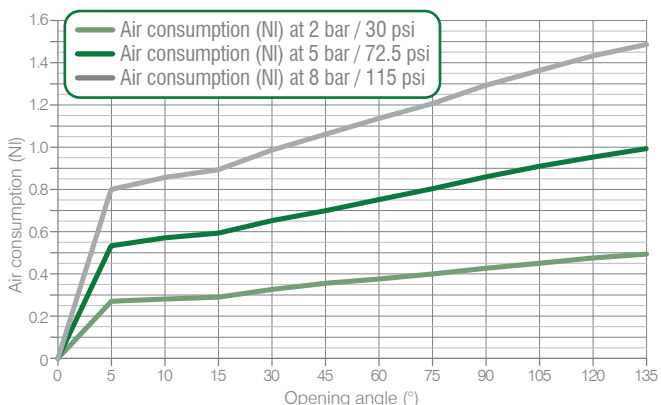
• **Clamping moment (at 5 bar / 72.5 psi)**
50 N m / 36,87 lb-ft

• **Holding moment**
75 N m / 55,31 lb-ft

The above data are meant for correct working conditions of the clamp with the same performance level during its life time. For applications which exceed the above data, please contact our sales representatives.

• **Air consumption / Complete cycle (opening and closing)**

REV. 00 - 17/06/2015



Ordering string

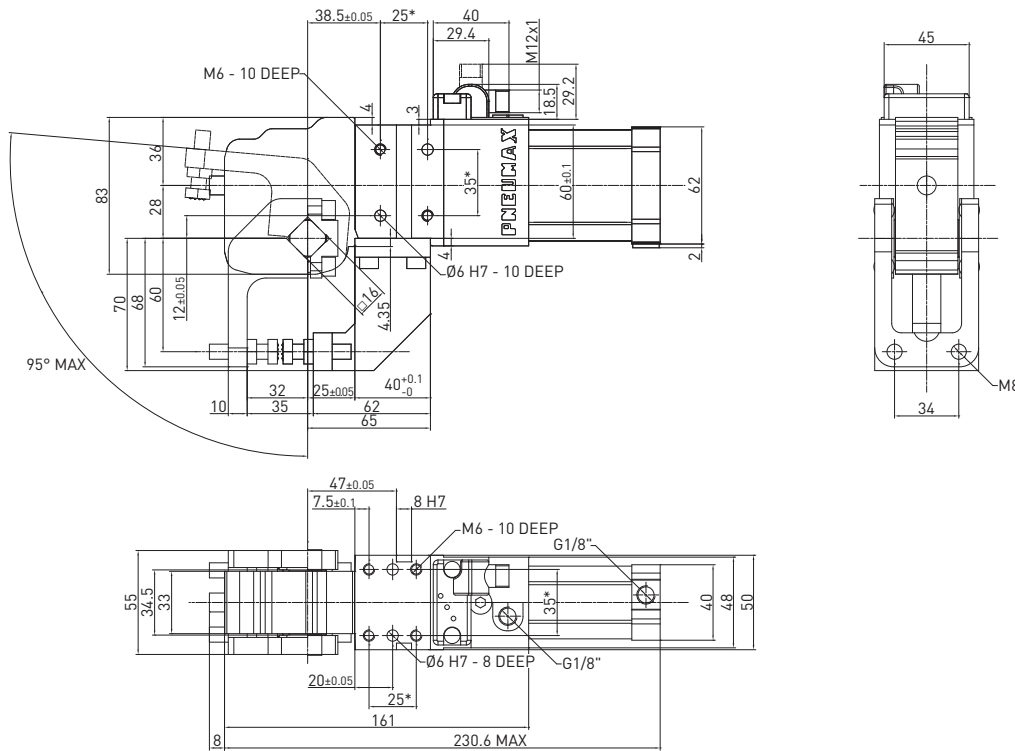
J-Series

J P 40 E G 1 2 A

J	VERSION	J = Retractable locating pin package with dual rod
P	OPERATION	P = pneumatic D = pneumatic with manual operation
40	SIZE	40 = Ø 40 mm
E	SENSOR	E = electronic sensor with M12 swivel connector - PNP A = electronic sensor with M12 swivel connector - NPN N = no sensor B = electronic sensor with M8 swivel connector - PNP
G	PORTS	G = G thread – BSPP
1	ARM MOVEMENT	1 = upper jaw
2	CLAMP ARM TYPE	2 = 2 pairs of knurled tips (not included in the scope of the supply)
A	ARM MATERIAL	A = aluminum S = steel

JP40E / Gripper clamp - Size 40 mm

WEIGHT 1.9 kg



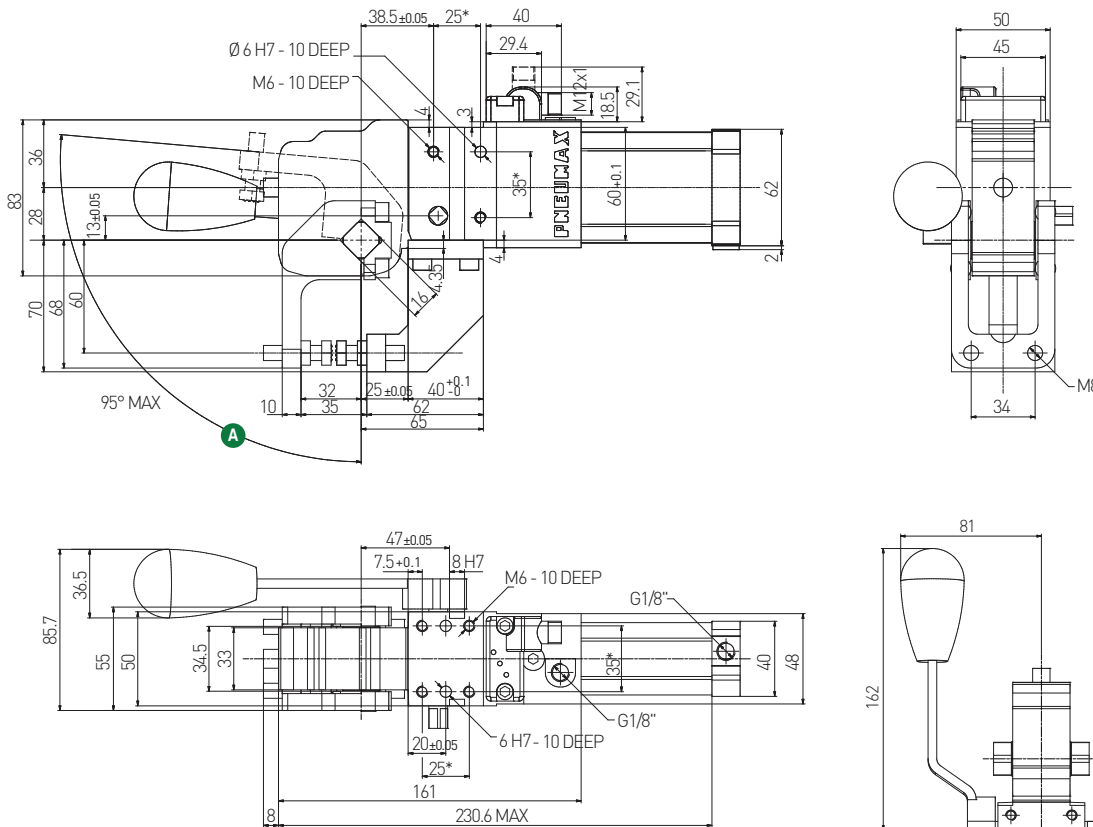
* DIMENSIONAL TOLERANCE FOR DOWEL HOLES: ± 0.02
DIMENSIONAL TOLERANCE FOR THREADED HOLES: ± 0.1

REV. 00 31/03/2015

JD_40E / Gripper clamp - Size 40 mm - Manual operation

WEIGHT 2.2 kg

D1 handle included



Handle swivel angle

Arm opening angle	Handle swivel angle A
0°	4.12°
15°	22.65°
30°	38.2°
45°	58.4°
60°	83.6°
75°	107.6°
90°	123.6°
105°	132.75°
120°	137.7°
135°	140°

D1 Version

D2 Version

* DIMENSIONAL TOLERANCE FOR DOWEL HOLES: ± 0.02

DIMENSIONAL TOLERANCE FOR THREADED HOLES: ± 0.1

REV. 00 - 17/06/2015

M5x16 screws
Tightening torque: 5 Nm / 3.68 Lb ft