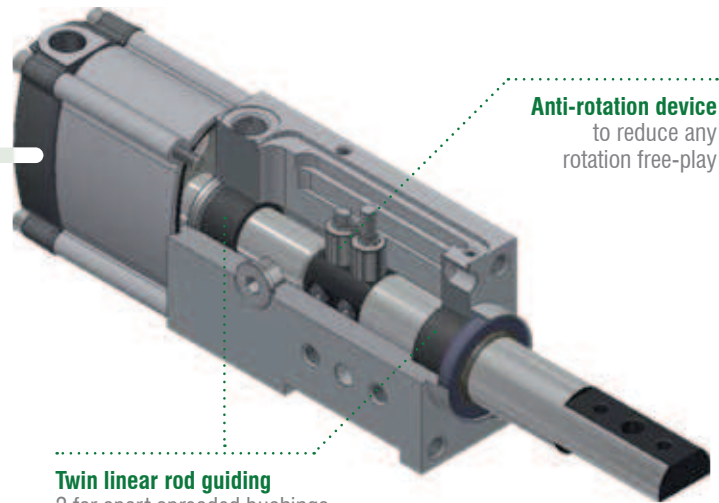


Locating

High locating accuracy.
High protection against welding debris and corrosion.



Anti-rotation device
to reduce any rotation free-play

Twin linear rod guiding
2 far apart spreaded bushings limit any deflection and improve the pin package accuracy over a long period of time.

LOCATING



Extra-light products



RP50 RP63 RM50 HP50 RD50 RT40 RTD40 RCD250 RC50 RC63 FP40 FP63 FT50 FTD50 RP32 RA32
CNOMO

High positioning accuracy level

Precise guiding through 2 far-apart spreaded bushings for an optimal support of the rods > twin piston rod guide

- Low deflection
- Efficient anti rotation mechanism

Long life built-in components in rust prevention

- No weld covers or bellows required
- Steel and brass rod scraper to prevent welding debris from entering the pin package
- Chrome rod coating as a protection against adhering weld sparks

High resistance to welding debris and corrosion

Anti-rotation system to reduce any rotation free-play

Locating products

LOCATING

Dual rods

- Extra-light products
- Short body length
- Clear design with user-friendly surfaces and no dirt or welding deposit traps



Nano pin packages



2-sided mounting option

Supply ports on 3 sides



Front
mount

Rear
mount



G ports
on 3 sides

High performance pin package

The heat generated from any welding process can cause a localized deformation in the workpiece when the metal cools, some parts could contract more than others, leaving residual stress.

To improve the process reliability, a higher level of pull force to disengage the pin can be required to overcome the tensions in the workpiece.

Pull force:
1960N



Cnomo

Pin packages according to Cnomo standard also available with manual operation.

CNOMO



FT-Series



Retractable locating pin packages with dual rods and toggle linkage

- Fully encapsulated toggle mechanism: in case of air loss, the working position remains secure
- Manual unlock mechanism to disengage the linkage in emergency situations
- Position repeatability ± 0.05 mm
- Clear design with user-friendly surfaces and no dirt or welding deposit traps

LOCATING

Technical features

Pneumatic ports on both sides of the cylinder.

Operating features

Operating pressure from 2 to 8 bar / from 30 to 115 psi

Lubrication all the devices are lubricated for life at the factory. Inline air lubrication isn't required

Functional charts

Size 50 mm

• Max deflection

Stroke	Load (kg)	Load position B deviation (mm)	Load position C deviation (mm)
40 mm	0.5	0.001	0.002
	1	0.001	0.002
	1.5	0.001	0.002
	2	0.001	0.002
	2.5	0.001	0.004
	3	0.001	0.004
	3.5	0.002	0.004
	4	0.002	0.004

• Functional data (at 5 bar / 72.5 psi)

Thrust force	4900 N
Max distance from the load centre to the rod	200 mm

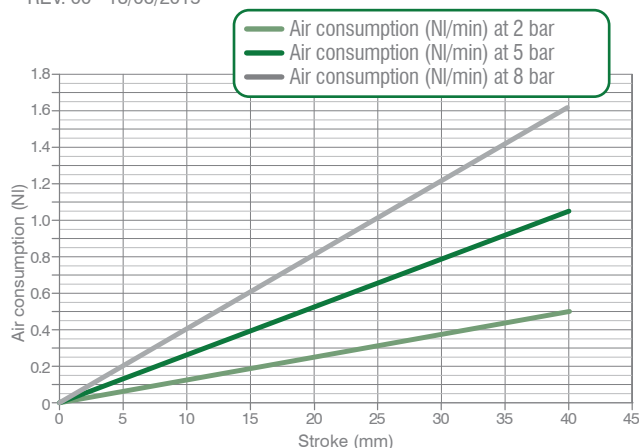
• Cycle time for max stroke

< 0.8 s NO flow valve required

• Air consumption

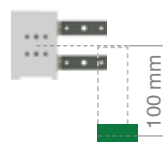
Air consumption for complete cycle

REV. 00 - 18/06/2015



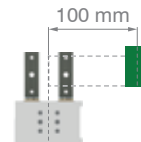
Load position **B**

Horizontal mounting position of the retractable locating pin/load centre at 100 mm from the rod axis



Load position **C**

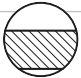
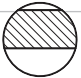
Vertical mounting position of the retractable locating pin/load centre at 100 mm from the rod axis

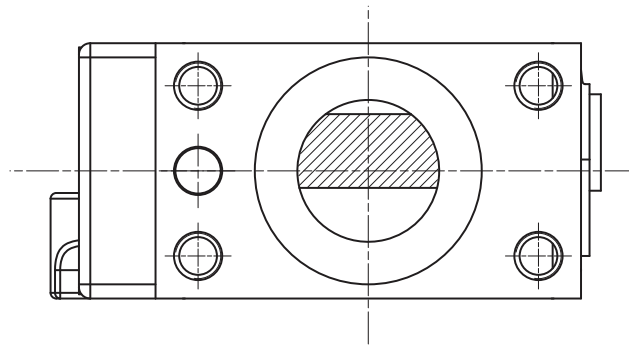


FT-Series / Ordering string

FT_50-series

F **T** **50** **E** **40** **G** **5** **2**

F	VERSION	F = Retractable locating pin packages with dual rods
T	OPERATION	T = pneumatic with toggle lock TD = pneumatic with manual operation and toggle lock
50	SIZE	50 = Ø 50 mm
E	SENSOR	E = electronic sensor with M12 swivel connector - PNP
40	STROKE	40 = 40 mm
G	PORTS	G = G thread – BSPP
3	ROD TERMINATION	3 = Mounting surface on the rods corresponds to the pin package axis 5 = 2.5 mm out of the axis mounting surface
2	ROD ORIENTATION	2 =  4 = 

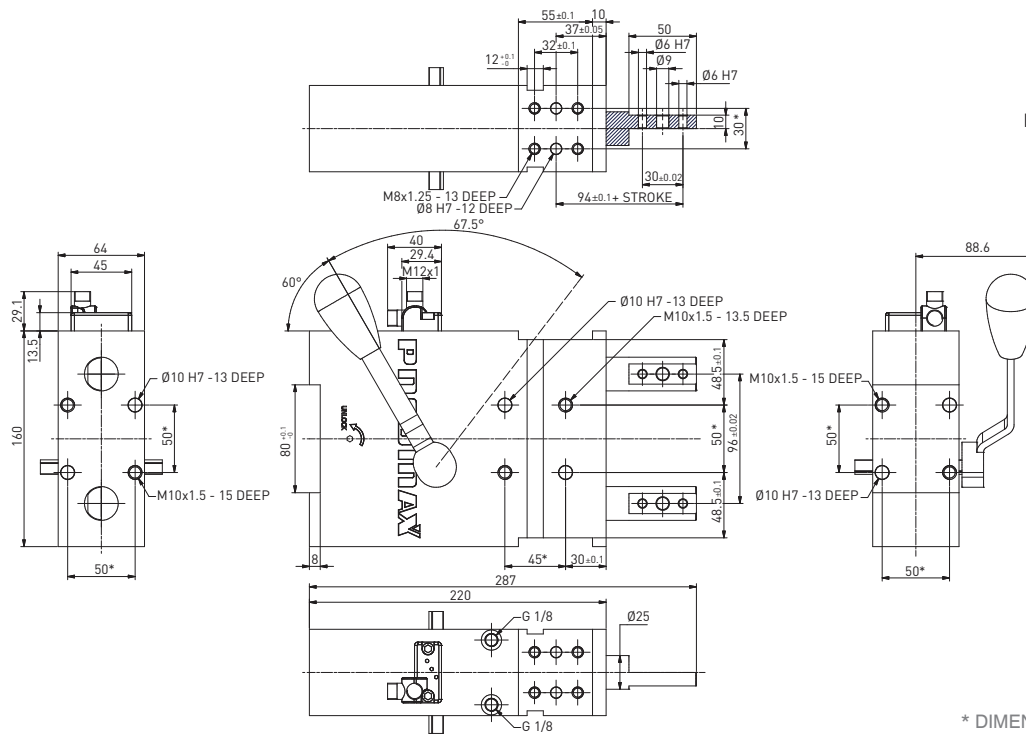


LOCATING

FTD50E40G3 / Retractable locating pin package with dual rods and toggle linkage and manual operation - Size 50 mm
Rod termination 3 – in line to the pin package axis

WEIGHT 7,5 KG
Handle included

Max Hand Force: 200 N



* DIMENSIONAL TOLERANCE
FOR DOWEL HOLES: ± 0.02

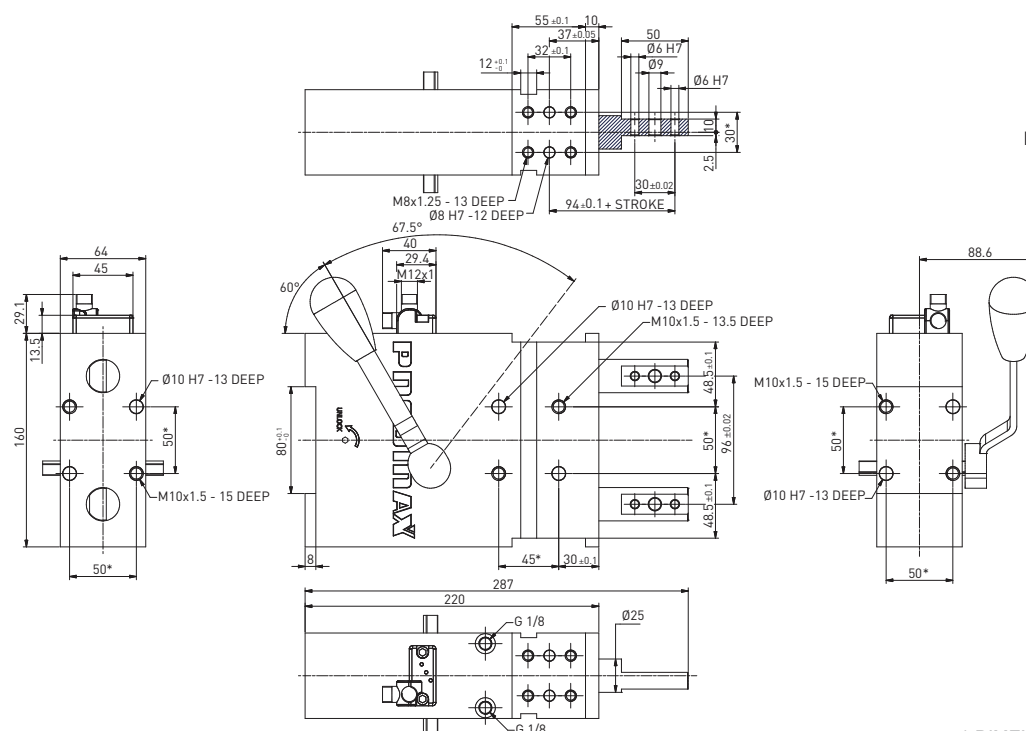
DIMENSIONAL TOLERANCE
FOR THREADED HOLES: ± 0.1

REV. 01 - 27/04/2021

FTD50E40G5 / Retractable locating pin package with dual rods and toggle linkage and manual operation - Size 50 mm
Rod termination 5 – 2.5 mm out of axis mounting surface

WEIGHT 7,5 KG
Handle included

Max Hand Force: 200 N



* DIMENSIONAL TOLERANCE
FOR DOWEL HOLES: ± 0.02

DIMENSIONAL TOLERANCE
FOR THREADED HOLES: ± 0.1

REV. 01 - 27/04/2021