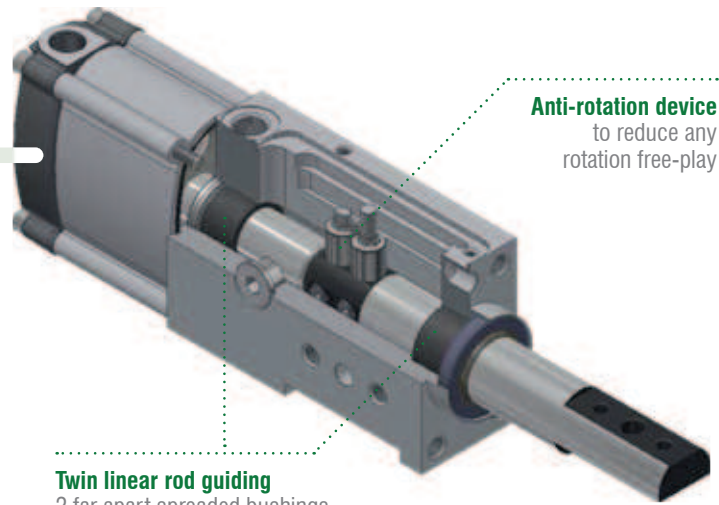


Locating

High locating accuracy.
High protection against welding debris and corrosion.



Anti-rotation device
to reduce any rotation free-play

Twin linear rod guiding
2 far apart spreaded bushings limit any deflection and improve the pin package accuracy over a long period of time.

LOCATING



Extra-light products



RP50 RP63 RM50 HP50 RD50 RT40 RTD40 RCD250 RC50 RC63 FP40 FP63 FT50 FTD50 RP32 RA32
CNOMO

High positioning accuracy level

Precise guiding through 2 far-apart spreaded bushings for an optimal support of the rods > twin piston rod guide

- Low deflection
- Efficient anti rotation mechanism

Long life built-in components in rust prevention

- No weld covers or bellows required
- Steel and brass rod scraper to prevent welding debris from entering the pin package
- Chrome rod coating as a protection against adhering weld sparks

High resistance to welding debris and corrosion

Anti-rotation system to reduce any rotation free-play

Locating products

LOCATING

Dual rods

- Extra-light products
- Short body length
- Clear design with user-friendly surfaces and no dirt or welding deposit traps



Nano pin packages



2-sided mounting option

Supply ports on 3 sides



Front
mount

Rear
mount



G ports
on 3 sides

High performance pin package

The heat generated from any welding process can cause a localized deformation in the workpiece when the metal cools, some parts could contract more than others, leaving residual stress.

To improve the process reliability, a higher level of pull force to disengage the pin can be required to overcome the tensions in the workpiece.

Pull force:
1960N



Cnomo

Pin packages according to Cnomo standard also available with manual operation.

CNOMO



HP-Series

High Performance retractable locating pin package



Technical features

Pneumatic ports on both sides of the cylinder.

Operating features

Operating pressure	from 2 to 8 bar / from 30 to 115 psi
Lubrication	all the devices are lubricated for life at the factory. Inline air lubrication isn't required

Functional charts

Size 50 mm

• Max deflection

Stroke	Load (kg)	Load position A deviation (mm)	Load position B deviation (mm)	Load position C deviation (mm)
60 mm	0.5	0.007	0.012	0.01
	1	0.013	0.025	0.023
	1.5	0.02	0.04	0.036
	2	0.03	0.053	0.049
	2.5	0.038	0.067	0.064
	3	0.045	0.082	0.075
50 mm	0.5	0.006	0.009	0.007
	1	0.013	0.02	0.018
	1.5	0.021	0.032	0.028
	2	0.026	0.047	0.043
	2.5	0.032	0.66	0.057
	3	0.037	0.075	0.068
40 mm	0.5	0.004	0.009	0.004
	1	0.009	0.02	0.009
	1.5	0.013	0.032	0.013
	2	0.018	0.047	0.018
	2.5	0.022	0.66	0.022
	3	0.026	0.075	0.026
25 mm	0.5	0	0.005	0
	1	0.005	0.015	0.005
	1.5	0.007	0.032	0.007
	2	0.011	0.047	0.011
	2.5	0.012	0.66	0.012
	3	0.014	0.075	0.014
15 mm	0.5	0	0.005	0
	1	0.002	0.018	0
	1.5	0.004	0.025	0.002
	2	0.007	0.033	0.006
	2.5	0.012	0.043	0.009
	3	0.014	0.052	0.013

• Functional data (at 5 bar / 72.5 psi)

Thrust force	825 N
Pull force	1.960 N
Max bending moment	3 N m / 2.21 lb-ft
Max distance from the load centre to the rod	200 mm

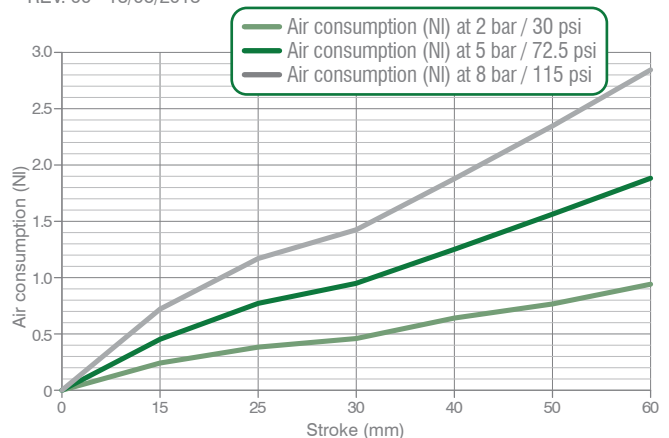
• Cycle time for max stroke

< 0.8 s NO flow valve required

• Air consumption

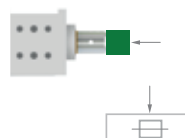
Air consumption for complete cycle

REV. 00 - 18/06/2015



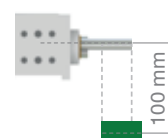
Load position **A**

Horizontal mounting position of the retractable locating pin/load centre on the rod



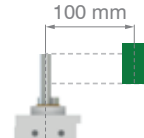
Load position **B**

Horizontal mounting position of the retractable locating pin/load centre at 100 mm from the rod axis



Load position **C**

Vertical mounting position of the retractable locating pin/load centre at 100 mm from the rod axis



Ordering string

HP-Series

HP **50** **E** **40** **3** **G** **1**

HP VERSION **HP** = High Performance retractable locating pin package

50 SIZE **50** = Ø 50 mm

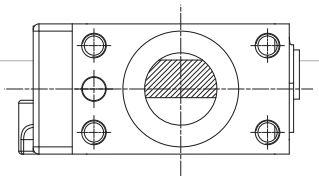
E SENSOR
E = electronic sensor with M12 swivel connector - PNP
A = electronic sensor with M12 swivel connector - NPN
N = no sensor
B = electronic sensor with M8 swivel connector - PNP

40 STROKE
15 = 15 mm
25 = 25 mm
40 = 40 mm
50 = 50 mm
60 = 60 mm

3 ROD TERMINATION
1 = iØ 16 mm cross-cut key rod termination
2 = iØ 10 mm cross-cut key rod termination
3 = rod termination for offset pins
4 = rod termination with key
5 = iØ 10 mm flat termination
6 = iØ 12 mm flat termination

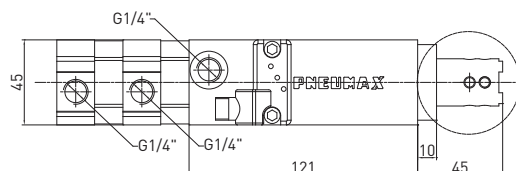
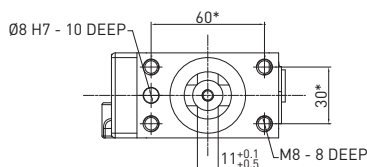
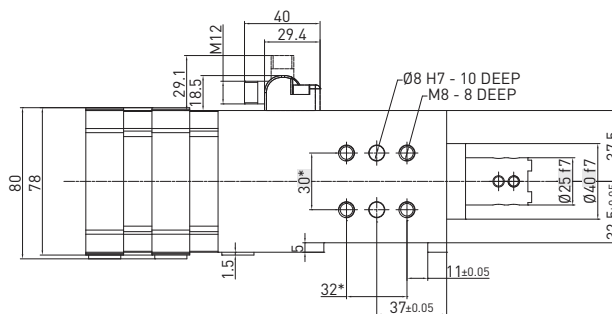
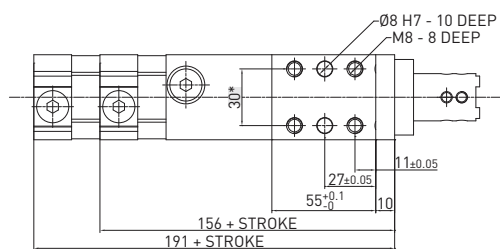
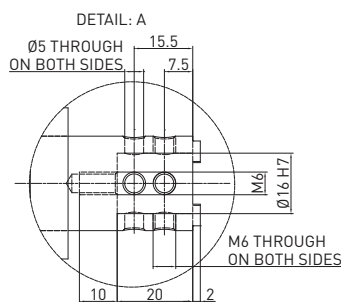
G PORTS **G** = G thread – BSPP

1 ROD ORIENTATION
 (for termination type 3)



LOCATING

HP50E_1 / High Performance retractable locating pin package - Size 50 mm - iØ 16 mm cross-cut key rod termination

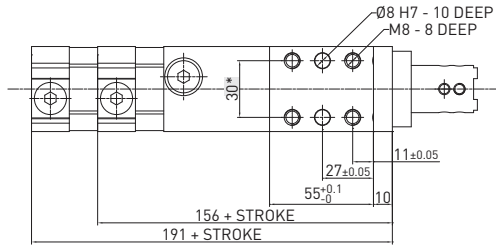
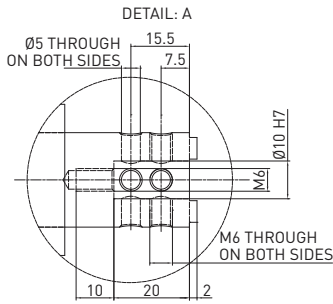


WEIGHT 2.2 kg
min. stroke version

WEIGHT 2.5 kg
max. stroke version

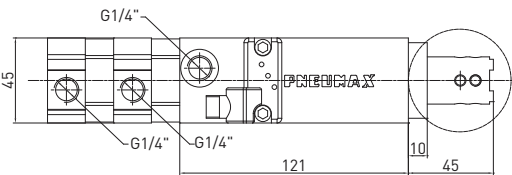
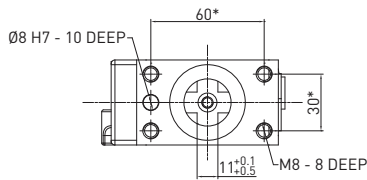
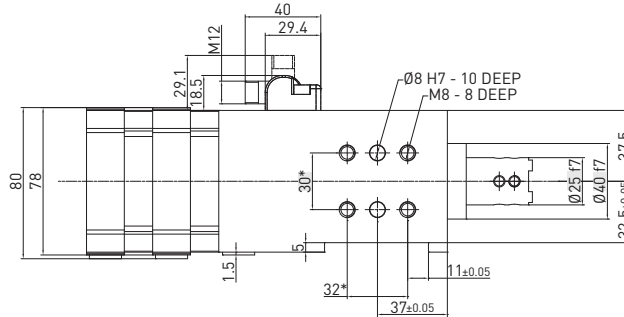
REV. 01 - 26/02/2016

HP50E_2 / High Performance retractable locating pin package - Size 50 mm - iØ 10 mm cross-cut key rod termination



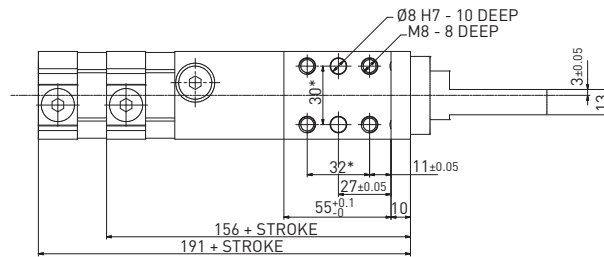
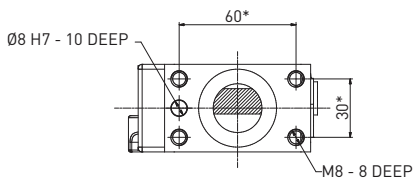
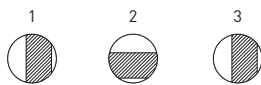
WEIGHT 2.2 kg
min. stroke version

WEIGHT 2.5 kg
max. stroke version



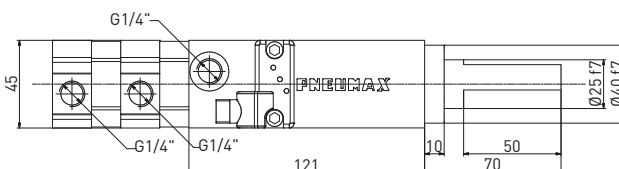
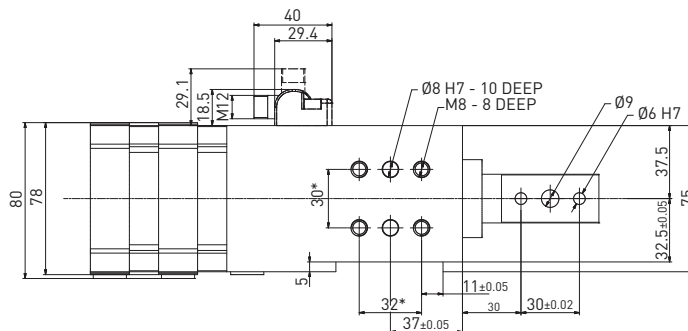
REV. 01 - 26/02/2016

HP50E_3 / High Performance retractable locating pin package - Size 50 mm - Rod termination for offset pins



WEIGHT 2.2 kg
min. stroke version

WEIGHT 2.5 kg
max. stroke version



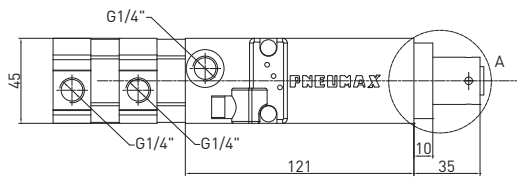
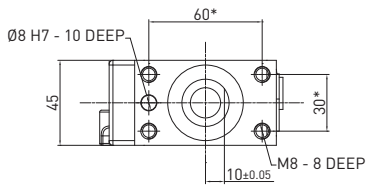
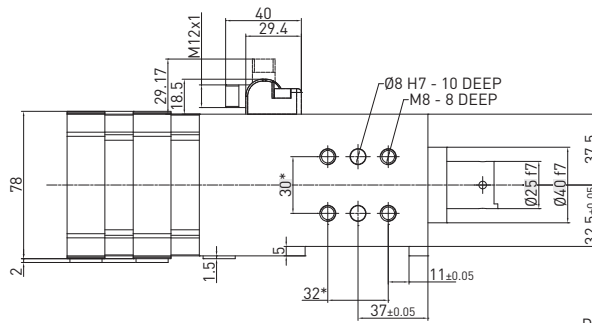
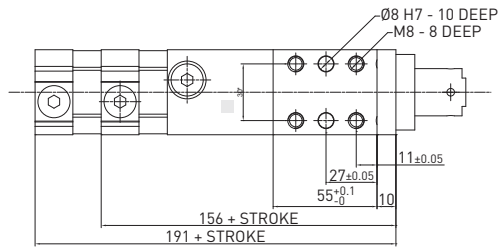
REV. 00 - 12/05/2015



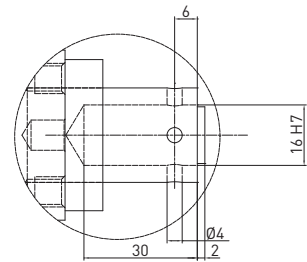
HP50E_4 / High Performance retractable locating pin package - Size 50 mm - Rod termination with key

WEIGHT 2.2 kg
min. stroke version

WEIGHT 2.5 kg
max. stroke version



DETAIL: A



REV. 00 - 31/03/2015

LOCATING