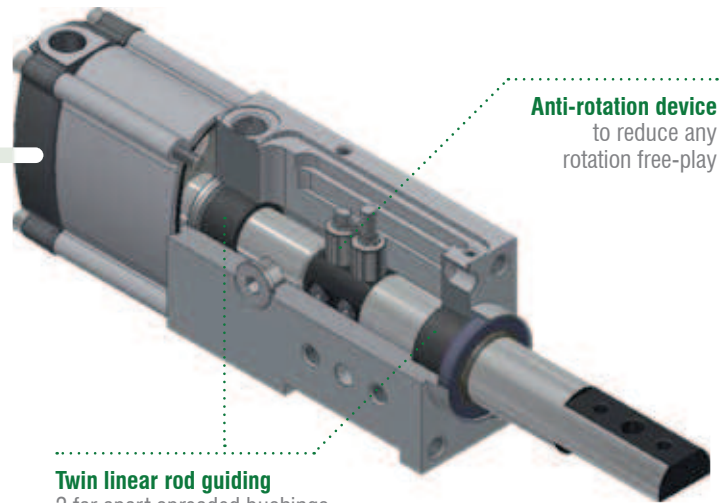


# Locating

High locating accuracy.  
High protection against welding debris and corrosion.



**Anti-rotation device**  
to reduce any rotation free-play

**Twin linear rod guiding**  
2 far apart spreaded bushings limit any deflection and improve the pin package accuracy over a long period of time.

LOCATING



**Extra-light products**



RP50 RP63 RM50 HP50 RD50 RT40 RTD40 RCD250 RC50 RC63 FP40 FP63 FT50 FTD50 RP32 RA32  
CNOMO

## High positioning accuracy level

Precise guiding through 2 far-apart spreaded bushings for an optimal support of the rods > twin piston rod guide

- Low deflection
- Efficient anti rotation mechanism

## Long life built-in components in rust prevention

- No weld covers or bellows required
- Steel and brass rod scraper to prevent welding debris from entering the pin package
- Chrome rod coating as a protection against adhering weld sparks

## High resistance to welding debris and corrosion

## Anti-rotation system to reduce any rotation free-play

## Locating products

### Dual rods

- Extra-light products
- Short body length
- Clear design with user-friendly surfaces and no dirt or welding deposit traps



### Nano pin packages



2-sided mounting option

Supply ports on 3 sides



Front  
mount

Rear  
mount



G ports  
on 3 sides

### High performance pin package

The heat generated from any welding process can cause a localized deformation in the workpiece when the metal cools, some parts could contract more than others, leaving residual stress.

To improve the process reliability, a higher level of pull force to disengage the pin can be required to overcome the tensions in the workpiece.

Pull force:  
**1960N**



### Cnomo

Pin packages according to Cnomo standard also available with manual operation.

**CNOMO**



# RT-Series

## Retractable locating pin packages with toggle linkage



- Fully encapsulated toggle mechanism: in case of air loss, the working position remains secure
- Manual unlock mechanism to disengage the linkage in emergency situations
- Position repeatability  $\pm 0.05$  mm
- Clear design with user-friendly surfaces and no dirt or welding deposit traps

LOCATING

### Technical features

Pneumatic ports on both sides of the cylinder.

#### Operating features

**Operating pressure** from 2 to 8 bar / from 30 to 115 psi

**Lubrication** all the devices are lubricated for life at the factory. Inline air lubrication isn't required

### Functional charts

#### Size 40 mm

##### • Max deflection

40 mm	0.5	0.004	0.009	0.004
	1	0.009	0.02	0.009
	1.5	0.013	0.032	0.013
	2	0.018	0.047	0.018
	2.5	0.022	0.66	0.022
	3	0.026	0.075	0.026

##### • Functional data (at 5 bar / 72.5 psi)

Thrust force at end stroke	2700 N
----------------------------	--------

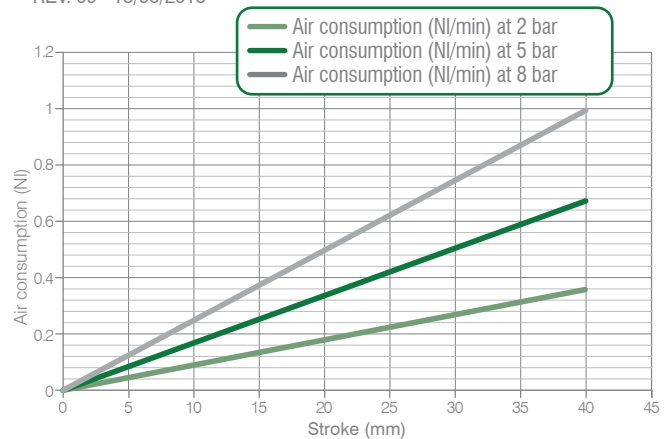
##### • Cycle time for max stroke

**< 0.8 s NO flow valve required**

##### • Air consumption

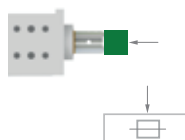
Air consumption for complete cycle

REV. 00 - 18/06/2015



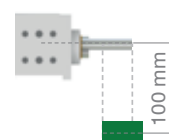
##### Load position **A**

Horizontal mounting position of the retractable locating pin/load centre on the rod



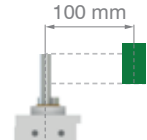
##### Load position **B**

Horizontal mounting position of the retractable locating pin/load centre at 100 mm from the rod axis



##### Load position **C**

Vertical mounting position of the retractable locating pin/load centre at 100 mm from the rod axis

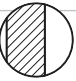
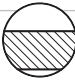
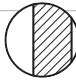
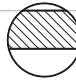


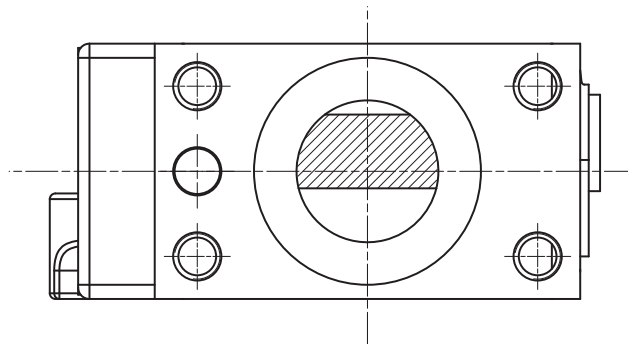


RT-Series / Ordering string

RT\_40-series

**R** **T** **40** **E** **40** **G** **3** **1**

<b>R</b>	<b>VERSION</b>	<b>R</b> = retractable locating pin package with toggle lock
<b>T</b>	<b>OPERATION</b>	<b>T</b> = pneumatic with toggle lock <b>TD</b> = pneumatic with manual operation and toggle lock
<b>40</b>	<b>SIZE</b>	<b>40</b> = Ø 40 mm
<b>E</b>	<b>SENSOR</b>	<b>E</b> = electronic sensor with M12 swivel connector -PNP
<b>40</b>	<b>STROKE</b>	<b>40</b> = 40 mm
<b>G</b>	<b>PORTS</b>	<b>G</b> = G thread – BSPP
<b>3</b>	<b>ROD TERMINATION</b>	<b>1</b> = iØ 16 mm cross-cut key rod termination <b>3</b> = rod termination for offset pins
<b>1</b>	<b>ROD ORIENTATION (for termination type 3)</b>	<b>1</b> =  <b>2</b> =  <b>3</b> =  <b>4</b> = 

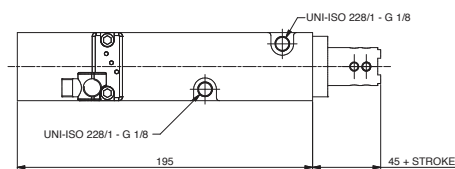
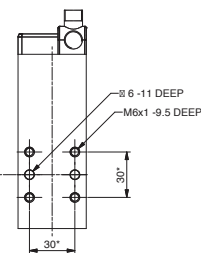
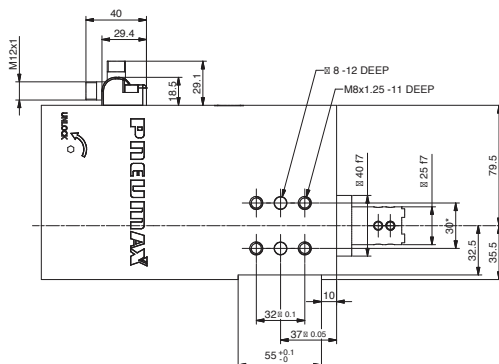
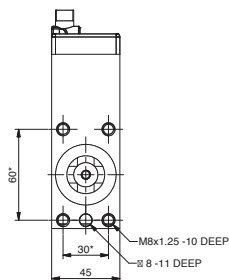
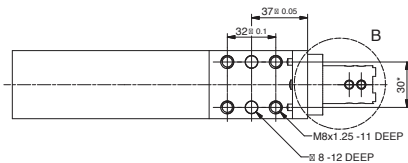
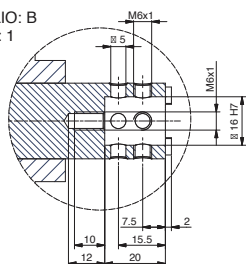


LOCATING

**RT40E40G1 / Retractable locating pin package with toggle lock - Size 40 mm - iØ 16 mm cross-cut key rod termination**

**WEIGHT 3,33 kg**

DETTAGLIO: B  
SCALA 1 : 1



\* DIMENSIONAL  
TOLERANCE FOR  
DOWEL HOLES: ±0.02

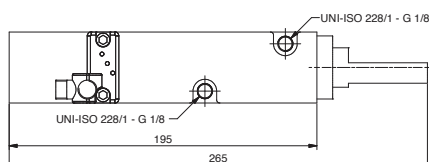
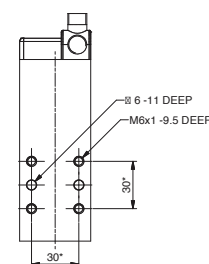
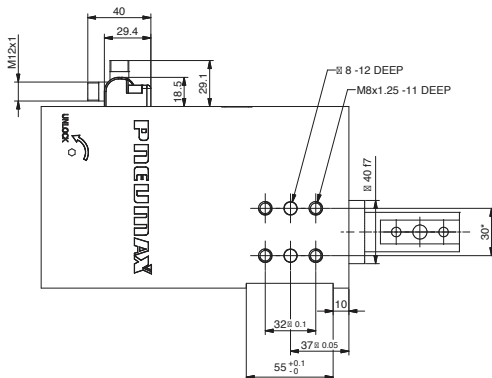
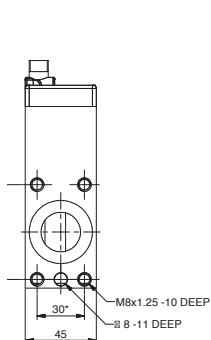
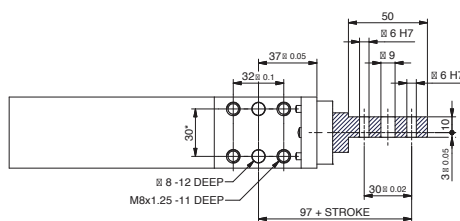
DIMENSIONAL  
TOLERANCE FOR  
THREADED HOLES: ±0.1

REV. 00 - 23/07/2021

**RT40E40G3\_ / Retractable locating pin package with toggle lock and manual operation - Size 40 mm rod termination for offset pins**

**WEIGHT 3,9 kg**

Handle included



\* DIMENSIONAL  
TOLERANCE FOR  
DOWEL HOLES: ±0.02

DIMENSIONAL  
TOLERANCE FOR  
THREADED HOLES: ±0.1

REV. 00 - 09/09/2021

ICE FOR DOWEL HOLES: Ø 0.02

