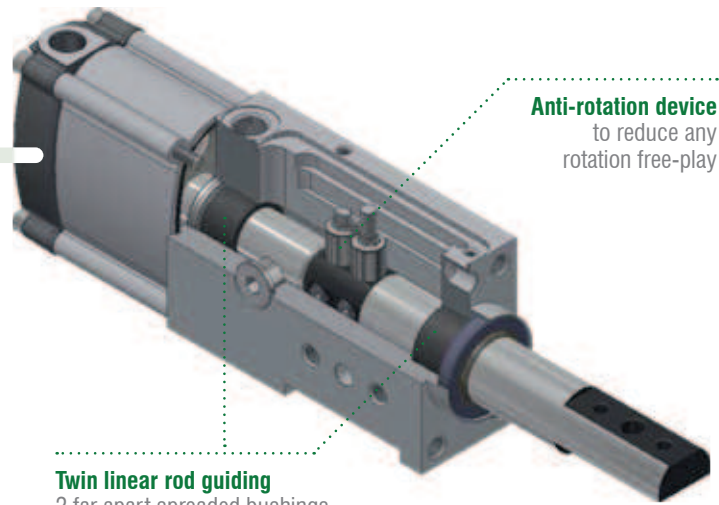


# Locating

High locating accuracy.  
High protection against welding debris and corrosion.



**Anti-rotation device**  
to reduce any rotation free-play

**Twin linear rod guiding**  
2 far apart spreaded bushings limit any deflection and improve the pin package accuracy over a long period of time.

LOCATING



**Extra-light products**



RP50 RP63 RM50 HP50 RD50 RT40 RTD40 RCD250 RC50 RC63 FP40 FP63 FT50 FTD50 RP32 RA32  
CNOMO

## High positioning accuracy level

Precise guiding through 2 far-apart spreaded bushings for an optimal support of the rods > twin piston rod guide

- Low deflection
- Efficient anti rotation mechanism

## Long life built-in components in rust prevention

- No weld covers or bellows required
- Steel and brass rod scraper to prevent welding debris from entering the pin package
- Chrome rod coating as a protection against adhering weld sparks

## High resistance to welding debris and corrosion

## Anti-rotation system to reduce any rotation free-play

## Locating products

### Dual rods

- Extra-light products
- Short body length
- Clear design with user-friendly surfaces and no dirt or welding deposit traps



### Nano pin packages



2-sided mounting option

Supply ports on 3 sides



Front  
mount

Rear  
mount



G ports  
on 3 sides

### High performance pin package

The heat generated from any welding process can cause a localized deformation in the workpiece when the metal cools, some parts could contract more than others, leaving residual stress.

To improve the process reliability, a higher level of pull force to disengage the pin can be required to overcome the tensions in the workpiece.

Pull force:  
**1960N**



### Cnomo

Pin packages according to Cnomo standard also available with manual operation.

**CNOMO**



### Retractable locating pin packages with toggle linkage

- Fully encapsulated toggle mechanism: in case of air loss, the working position remains secure
- Clear design with user-friendly surfaces



### Retractable locating pin packages with dual rods and toggle linkage

- Fully encapsulated toggle mechanism: in case of air loss, the working position remains secure
- Clear design with user-friendly surfaces and no dirt or welding deposit traps



### Retractable locating pin packages with toggle linkage and manual operation

- Manual unlock mechanism to disengage the linkage in emergency situations



### Retractable locating pin packages with dual rods, toggle linkage and manual operation

- Manual unlock mechanism to disengage the linkage in emergency situations



# R-Series

## Retractable locating pin packages



### Technical features

Pneumatic ports on both sides of the cylinder.

#### Operating features

<b>Operating pressure</b>	from 2 to 8 bar / from 30 to 115 psi
<b>Lubrication</b>	all the devices are lubricated for life at the factory. Inline air lubrication isn't required

### Functional charts

#### Size 50 mm

##### • Max deflection

Stroke	Load (kg)	Load position <b>A</b> deviation (mm)	Load position <b>B</b> deviation (mm)	Load position <b>C</b> deviation (mm)
60 mm	0.5	0.007	0.012	0.01
	1	0.013	0.025	0.023
	1.5	0.02	0.04	0.036
	2	0.03	0.053	0.049
	2.5	0.038	0.067	0.064
	3	0.045	0.082	0.075
50 mm	0.5	0.006	0.009	0.007
	1	0.013	0.02	0.018
	1.5	0.021	0.032	0.028
	2	0.026	0.047	0.043
	2.5	0.032	0.66	0.057
	3	0.037	0.075	0.068
40 mm	0.5	0.004	0.009	0.004
	1	0.009	0.02	0.009
	1.5	0.013	0.032	0.013
	2	0.018	0.047	0.018
	2.5	0.022	0.66	0.022
	3	0.026	0.075	0.026
25 mm	0.5	0	0.005	0
	1	0.005	0.015	0.005
	1.5	0.007	0.032	0.007
	2	0.011	0.047	0.011
	2.5	0.012	0.66	0.012
	3	0.014	0.075	0.014
15 mm	0.5	0	0.005	0
	1	0.002	0.018	0
	1.5	0.004	0.025	0.002
	2	0.007	0.033	0.006
	2.5	0.012	0.043	0.009
	3	0.014	0.052	0.013

##### • Functional data (at 5 bar / 72.5 psi)

Thrust force	<b>825 N</b>
Pull force	<b>980 N</b>
Max bending moment	<b>3 N m / 2.21 lb-ft</b>
Max distance from the load centre to the rod	<b>200 mm</b>

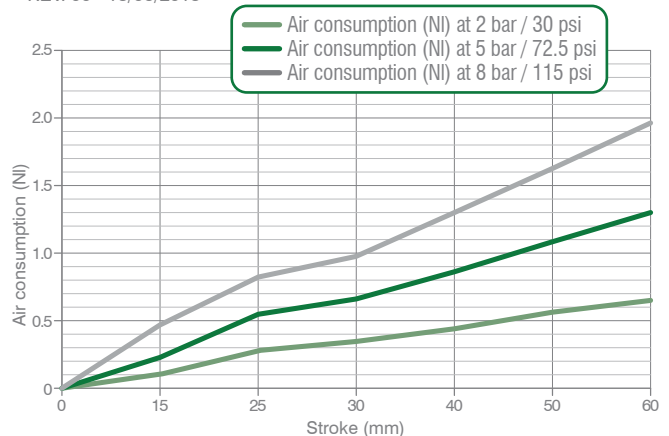
##### • Cycle time for max stroke

**< 0.8 s NO flow valve required**

##### • Air consumption

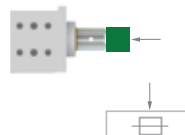
Air consumption for complete cycle

REV. 00 - 18/06/2015



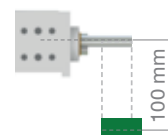
##### Load position **A**

Horizontal mounting position of the retractable locating pin/load centre on the rod



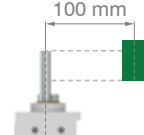
##### Load position **B**

Horizontal mounting position of the retractable locating pin/load centre at 100 mm from the rod axis



##### Load position **C**

Vertical mounting position of the retractable locating pin/load centre at 100 mm from the rod axis



## Size 63 mm

### • Max deflection

Stroke	Load (kg)	Load position <b>A</b> deviation (mm)	Load position <b>B</b> deviation (mm)	Load position <b>C</b> deviation (mm)
60 mm	0.5	0.007	0.012	0.01
	1	0.013	0.025	0.023
	1.5	0.02	0.04	0.036
	2	0.03	0.053	0.049
	2.5	0.038	0.067	0.064
	3	0.045	0.082	0.075
50 mm	0.5	0.006	0.009	0.007
	1	0.013	0.02	0.018
	1.5	0.021	0.032	0.028
	2	0.026	0.047	0.043
	2.5	0.032	0.66	0.057
	3	0.037	0.075	0.068
40 mm	0.5	0.004	0.009	0.004
	1	0.009	0.02	0.009
	1.5	0.013	0.032	0.013
	2	0.018	0.047	0.018
	2.5	0.022	0.66	0.022
	3	0.026	0.075	0.026
25 mm	0.5	0	0.005	0
	1	0.005	0.015	0.005
	1.5	0.007	0.032	0.007
	2	0.011	0.047	0.011
	2.5	0.012	0.66	0.012
	3	0.014	0.075	0.014
15 mm	0.5	0	0.005	0
	1	0.002	0.018	0
	1.5	0.004	0.025	0.002
	2	0.007	0.033	0.006
	2.5	0.012	0.043	0.009
	3	0.014	0.052	0.013

### • Functional data (at 5 bar / 72.5 psi)

Thrust force	1,400 N
Pull force	1,555 N
Max bending moment	3 N m / 2.21 lb-ft
Max distance from the load centre to the rod	200 mm

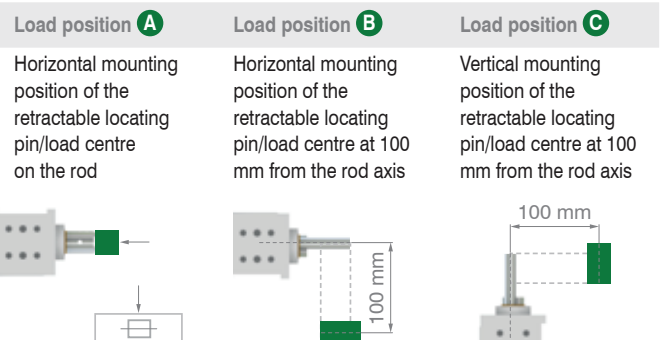
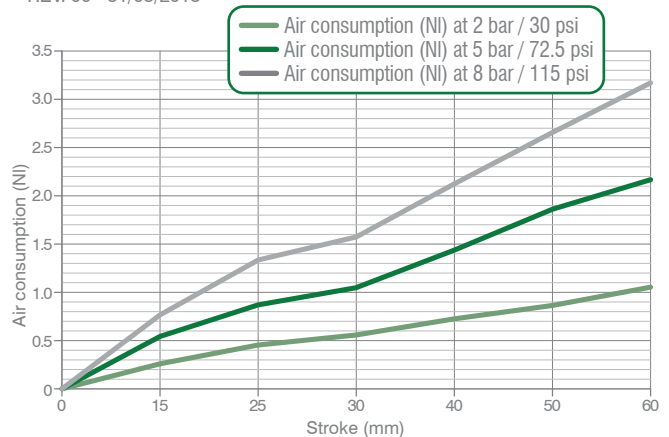
### • Cycle time for max stroke

< 0.8 s NO flow valve required

### • Air consumption

Air consumption for complete cycle

REV. 00 - 31/03/2015



Please get in touch with our technical representatives for any application which exceeds the above values, to find the appropriate solution for your application.

**R-Series / Ordering string**

**R\_32-series**

**R P 32 E 20 G 2**

LOCATING

<b>R</b>	<b>VERSION</b>	<b>R</b> = retractable locating pin package
<b>P</b>	<b>OPERATION</b>	<b>P</b> = pneumatic – sensor mounted on the end cap <b>A</b> = pneumatic – sensor mounted on the front side
<b>32</b>	<b>SIZE</b>	<b>32</b> = Ø 32 mm
<b>E</b>	<b>SENSOR</b>	<b>E</b> = electronic sensor with M12 swivel connector - PNP <b>A</b> = electronic sensor with M12 swivel connector - NPN <b>N</b> = no sensor <b>B</b> = electronic sensor with M8 swivel connector - PNP
<b>20</b>	<b>STROKE</b>	<b>20</b> = 20 mm <b>40</b> = 40 mm
<b>G</b>	<b>PORTS</b>	<b>G</b> = G thread – BSPP
<b>2</b>	<b>ROD TERMINATION</b>	<b>1</b> = iØ 16 mm cross-cut key rod termination <b>2</b> = iØ 10 mm cross-cut key rod termination



**Rod 1**



**Rod 2**

## R\_50/63-series

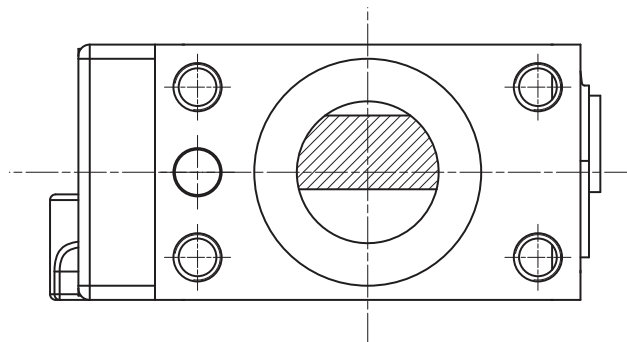
**R P 50 E 40 G 3 1**

<b>R</b>	<b>VERSION</b>	<b>R</b> = retractable locating pin package
<b>P</b>	<b>OPERATION</b>	<b>P</b> = pneumatic <b>D2</b> = pneumatic with manual operation (available in size 50)
<b>50</b>	<b>SIZE</b>	<b>50</b> = Ø 50 mm <b>63</b> = Ø 63 mm
<b>E</b>	<b>SENSOR</b>	<b>E</b> = electronic sensor with M12 swivel connector - PNP <b>A</b> = electronic sensor with M12 swivel connector - NPN <b>N</b> = no sensor <b>B</b> = electronic sensor with M8 swivel connector - PNP
<b>40</b>	<b>STROKE</b>	<b>15</b> = 15 mm <b>25</b> = 25 mm <b>40</b> = 40 mm <b>50</b> = 50 mm <b>60</b> = 60 mm
<b>G</b>	<b>PORTS</b>	<b>G</b> = G thread – BSPP
<b>3</b>	<b>ROD TERMINATION</b>	<b>1</b> = iØ 16 mm cross-cut key rod termination <b>2</b> = iØ 10 mm cross-cut key rod termination <b>3</b> = rod termination for offset pins <b>4</b> = rod termination with key <b>5</b> = rod with flat termination dia. 10 mm <b>6</b> = rod with flat termination dia. 12 mm <b>7</b> = iØ 12 mm CNOMO termination <b>8</b> = iØ 20 mm CNOMO termination



**Rod 1    Rod 2    Rod 3    Rod 4    Rod 5    Rod 6    Rod 7    Rod 8**

<b>1</b>	<b>ROD ORIENTATION (for termination type 3)</b>	<b>1</b> =	<b>2</b> =	<b>3</b> =	<b>4</b> =
----------	---	------------	------------	------------	------------



LOCATING

## RM250-series

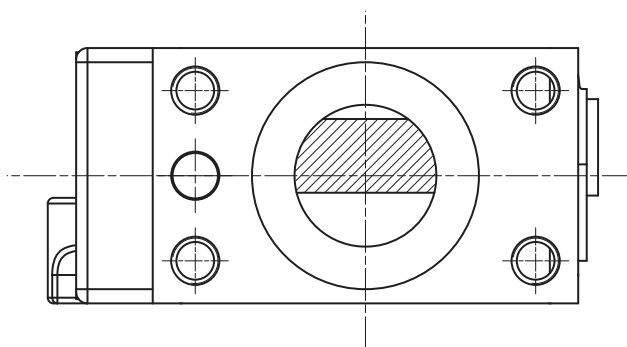
**R M2 50 E 15 3 1**

<b>R</b>	<b>VERSION</b>	<b>R</b> = retractable locating pin package
<b>M2</b>	<b>OPERATION</b>	<b>M2</b> = manual operation - handle included
<b>50</b>	<b>SIZE</b>	<b>50</b> = body corresponding to size 50
<b>E</b>	<b>SENSOR</b>	<b>E</b> = electronic sensor with M12 swivel connector - PNP <b>A</b> = electronic sensor with M12 swivel connector - NPN <b>N</b> = no sensor <b>B</b> = electronic sensor with M8 swivel connector - PNP
<b>15</b>	<b>STROKE</b>	<b>15</b> = 15 mm <b>25</b> = 25 mm <b>40</b> = 40 mm <b>50</b> = 50 mm <b>60</b> = 60 mm
<b>3</b>	<b>ROD TERMINATION</b>	<b>1</b> = iØ 16 mm cross-cut key rod termination <b>2</b> = iØ 10 mm cross-cut key rod termination <b>3</b> = rod termination for offset pins <b>4</b> = rod termination with key <b>5</b> = rod with flat termination dia. 10 mm <b>6</b> = rod with flat termination dia. 12 mm <b>7</b> = iØ 12 mm CNOMO termination <b>8</b> = iØ 20 mm CNOMO termination



**Rod 1    Rod 2    Rod 3    Rod 4    Rod 5    Rod 6    Rod 7    Rod 8**

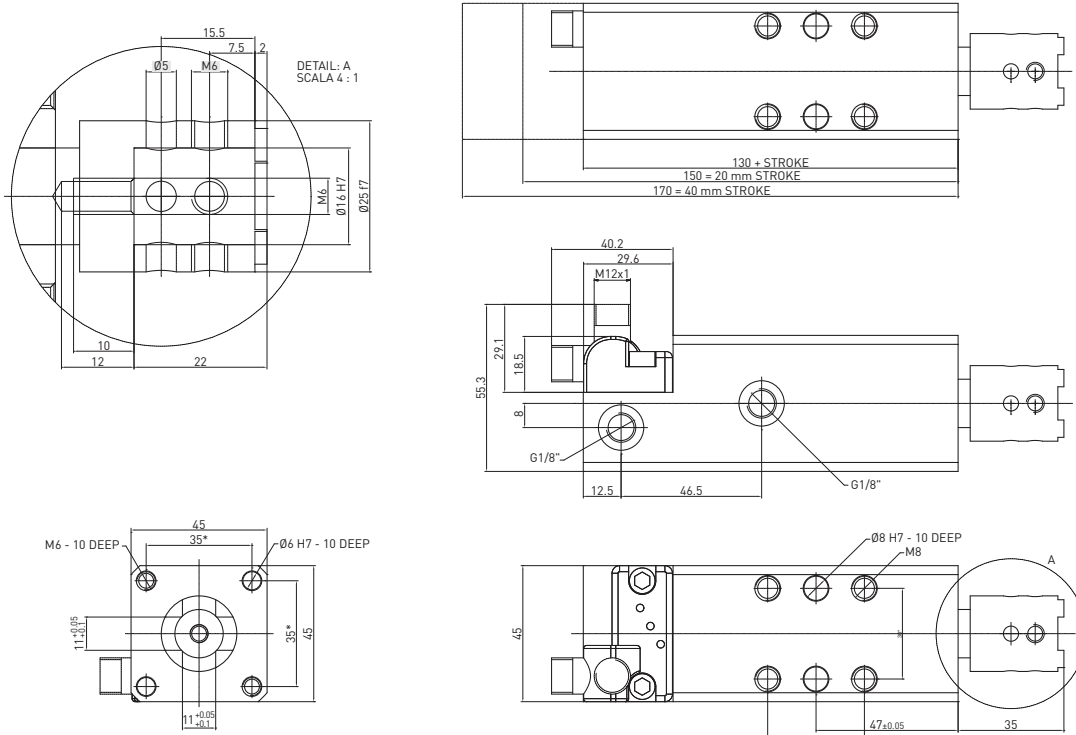
<b>1</b>	<b>ROD ORIENTATION (for termination type 3)</b>	<b>1</b> =	<b>2</b> =	<b>3</b> =	<b>4</b> =
----------	---	------------	------------	------------	------------





**RP32E \_1 / Retractable locating pin package - Size 32 mm - iØ 16 mm cross-cut key rod termination**

**WEIGHT 0.88 kg**  
min. stroke version

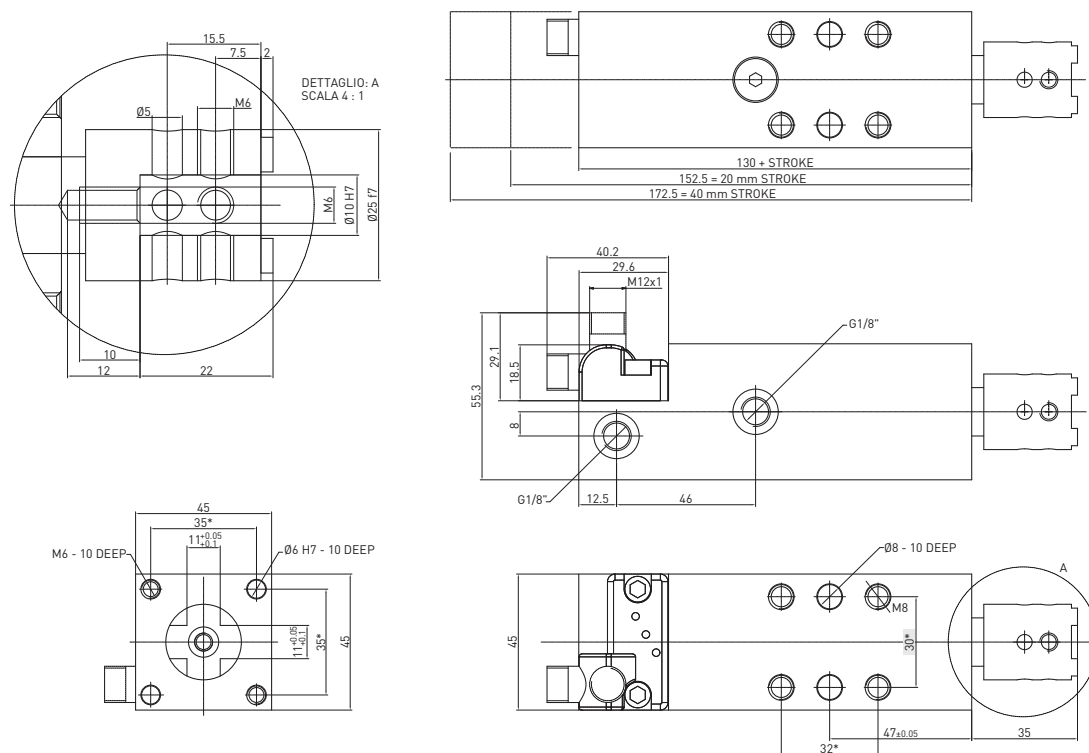


\* DIMENSIONAL TOLERANCE FOR DOWEL HOLES: ±0.02  
DIMENSIONAL TOLERANCE FOR THREADED HOLES: ±0.1

REV. 00 - 07/03/2017

**RP32E \_2 / Retractable locating pin package - Size 32 mm - iØ 10 mm cross-cut key rod termination**

**WEIGHT 0.88 kg**  
min. stroke version



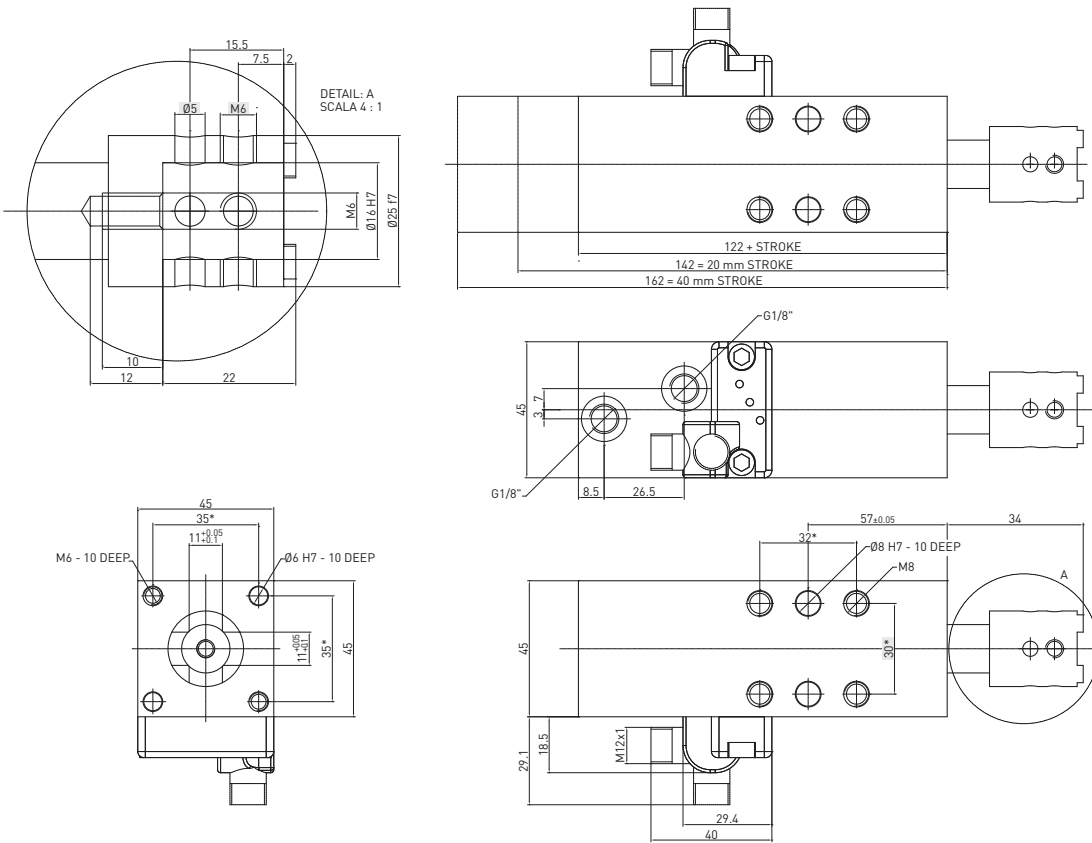
\* DIMENSIONAL TOLERANCE FOR DOWEL HOLES: ±0.02  
DIMENSIONAL TOLERANCE FOR THREADED HOLES: ±0.1

REV. 00 - 00/00/0000

**RA32E \_1 / Retractable locating pin package - Size 32 mm - iØ 16 mm cross-cut key rod termination**

**WEIGHT 0.94 kg**  
min. stroke version

LOCATING



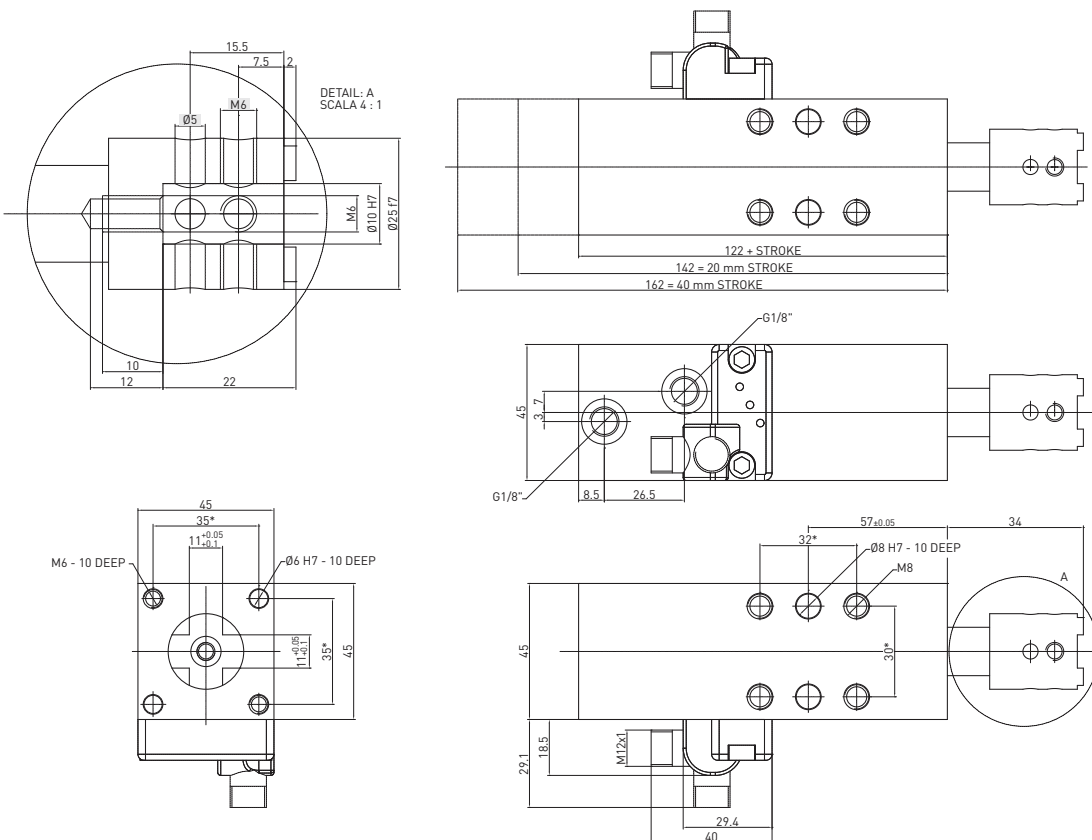
\* DIMENSIONAL  
TOLERANCE FOR  
DOWEL HOLES: ±0.02

DIMENSIONAL  
TOLERANCE FOR  
THREADED HOLES: ±0.1

REV. 02 - 12/01/2018

**RA32E \_2 / Retractable locating pin package - Size 32 mm - iØ 10 mm cross-cut key rod termination**

**WEIGHT 0.94 kg**  
min. stroke version



\* DIMENSIONAL  
TOLERANCE FOR  
DOWEL HOLES: ±0.02

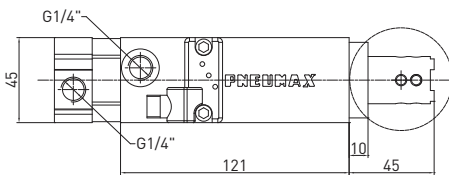
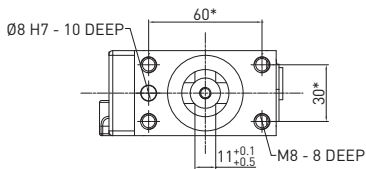
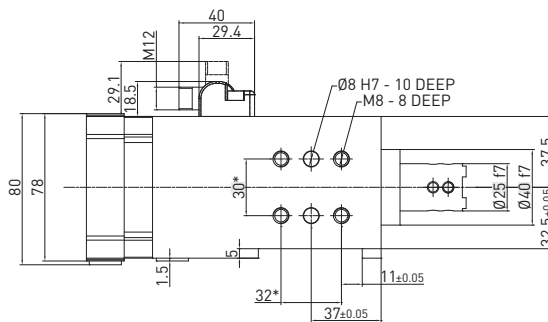
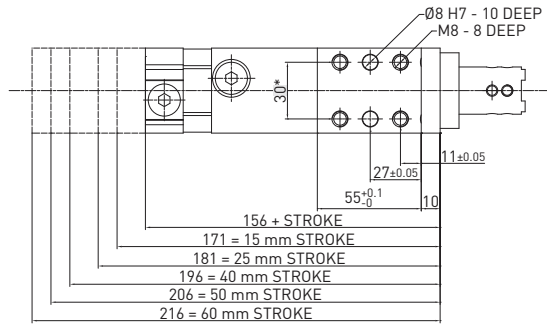
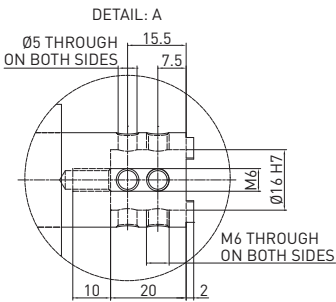
DIMENSIONAL  
TOLERANCE FOR  
THREADED HOLES: ±0.1

REV. 02 - 12/01/2018

**RP50E \_1 / Retractable locating pin package - Size 50 mm - iØ 16 mm cross-cut key rod termination**

**WEIGHT 1.85 kg**  
min. stroke version

**WEIGHT 2.1 kg**  
max. stroke version



\* DIMENSIONAL TOLERANCE FOR DOWEL HOLES: ±0.02

DIMENSIONAL TOLERANCE FOR THREADED HOLES: ±0.1

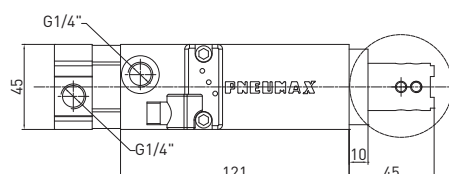
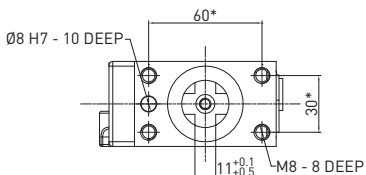
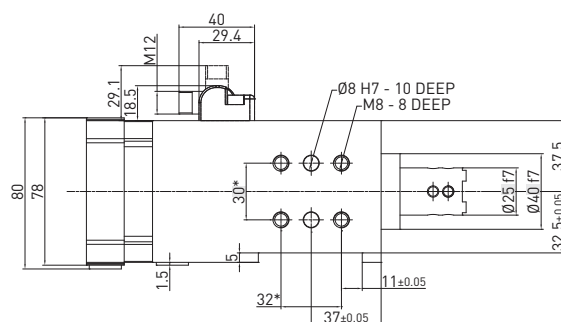
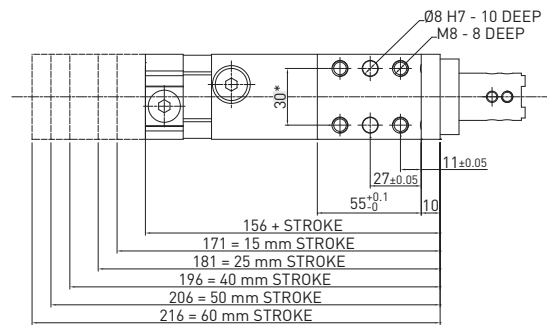
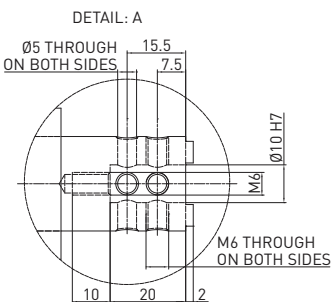
REV. 01 - 26/02/2016

LOCATING

**RP50E \_2 / Retractable locating pin package - Size 50 mm - iØ 10 mm cross-cut key rod termination**

**WEIGHT 1.85 kg**  
min. stroke version

**WEIGHT 2.1 kg**  
max. stroke version



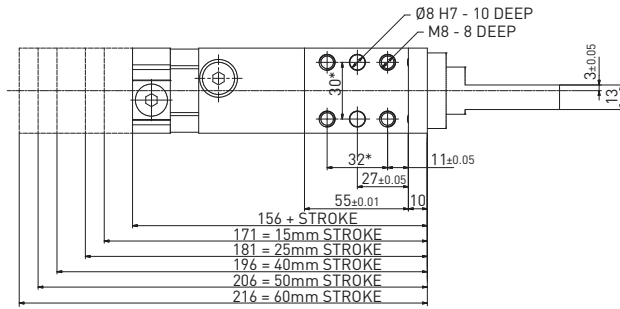
\* DIMENSIONAL TOLERANCE FOR DOWEL HOLES: ±0.02

DIMENSIONAL TOLERANCE FOR THREADED HOLES: ±0.1

REV. 01 - 26/02/2016

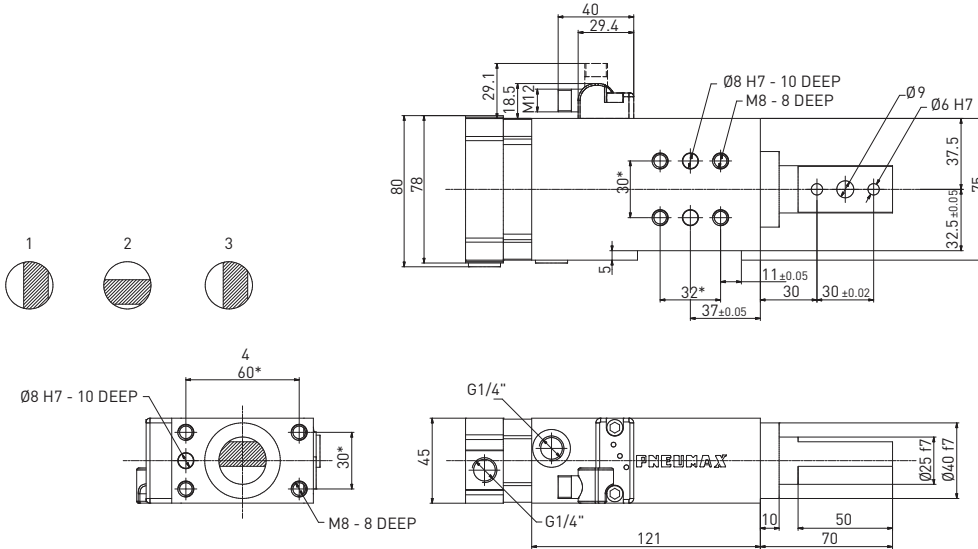
**RP50E\_3 / Retractable locating pin package - Size 50 mm - Rod termination for offset pins**

LOCATING



**WEIGHT 1.85 kg**  
min. stroke version

**WEIGHT 2.1 kg**  
max. stroke version

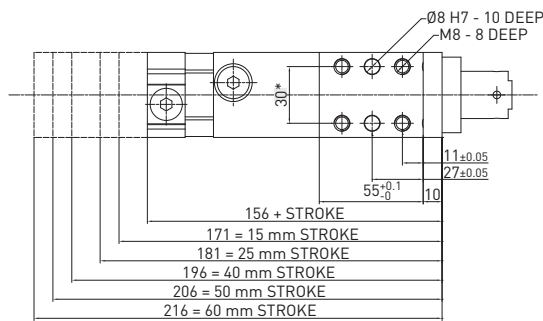
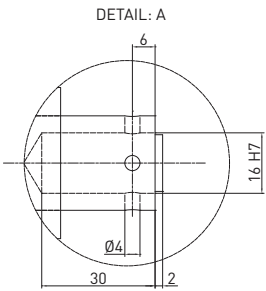


\* DIMENSIONAL  
TOLERANCE FOR  
DOWEL HOLES: ±0.02

DIMENSIONAL  
TOLERANCE FOR  
THREADED HOLES: ±0.1

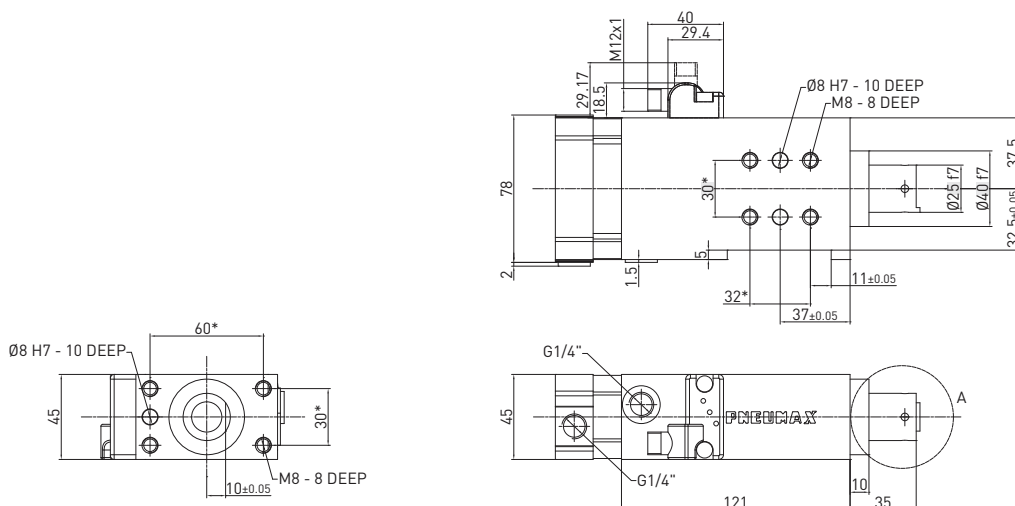
REV. 00 - 03/04/2015

**RP50E\_4 / Retractable locating pin package - Size 50 mm - Rod termination with key**



**WEIGHT 1.85 kg**  
min. stroke version

**WEIGHT 2.1 kg**  
max. stroke version



\* DIMENSIONAL  
TOLERANCE FOR  
DOWEL HOLES: ±0.02

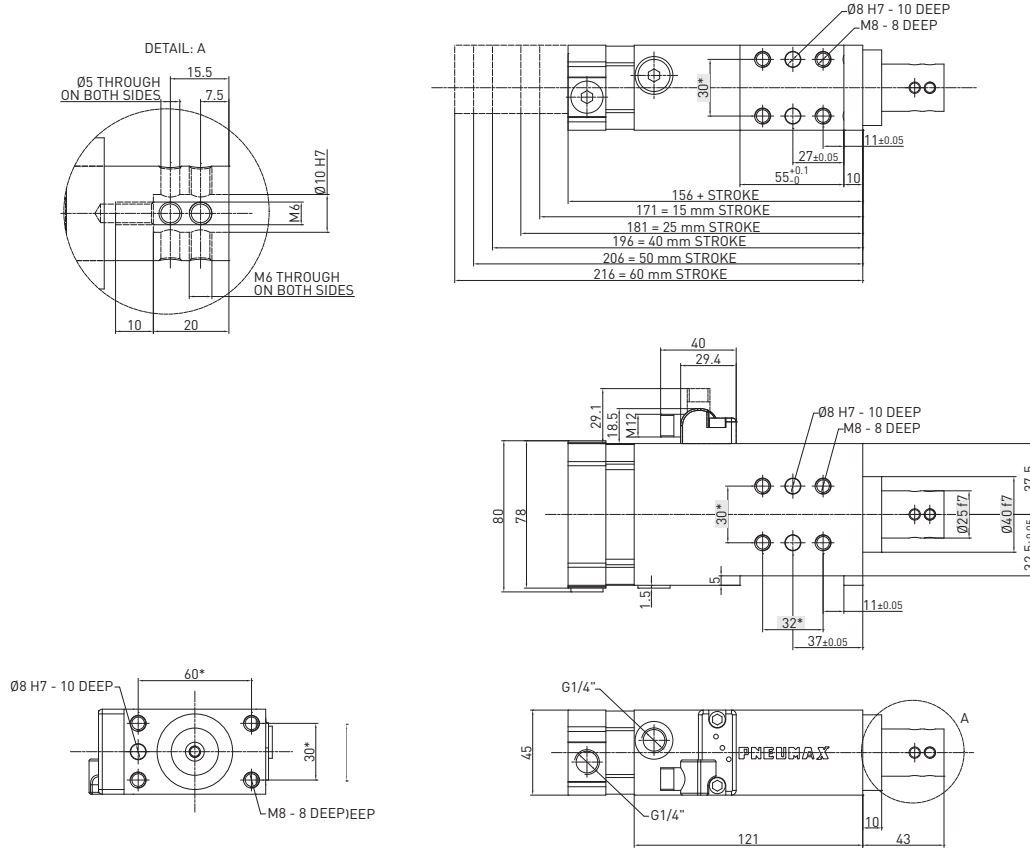
DIMENSIONAL  
TOLERANCE FOR  
THREADED HOLES: ±0.1

REV. 02 - 31/03/2015

**RP50E\_5 / Retractable locating pin package - Size 50 mm - iØ 10 mm flat termination**

**WEIGHT 1.85 kg**  
min. stroke version

**WEIGHT 2.1 kg**  
max. stroke version



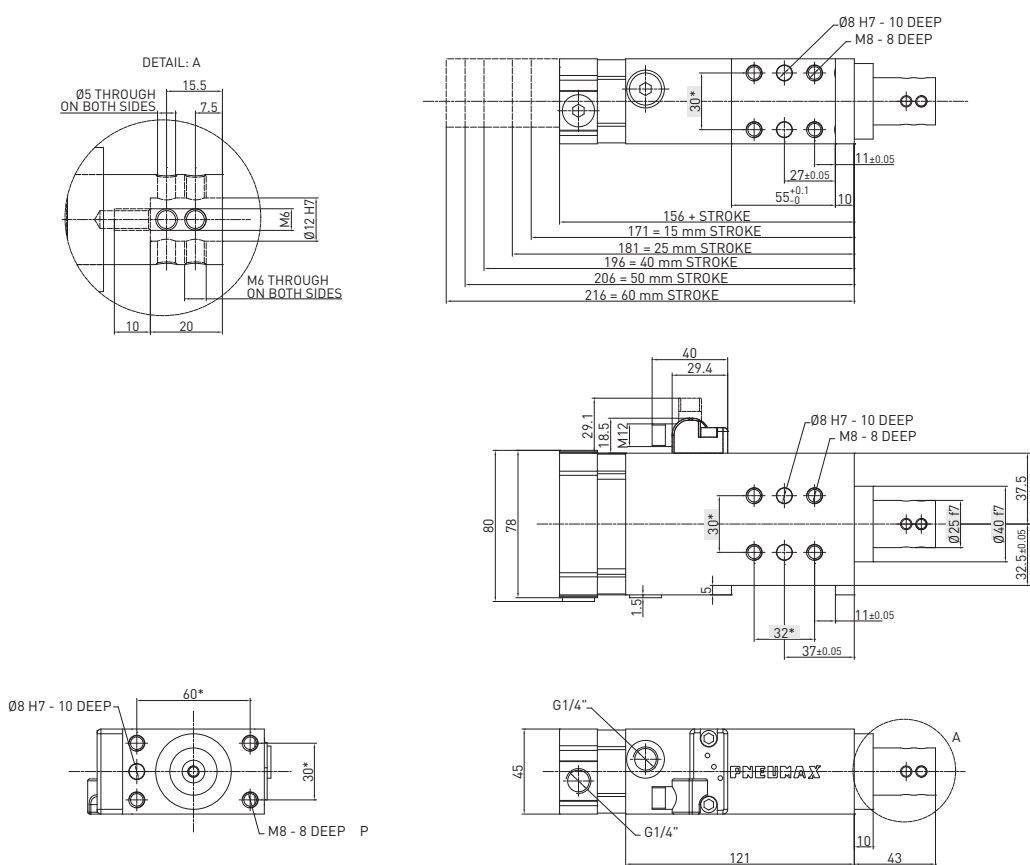
\* DIMENSIONAL TOLERANCE FOR DOWEL HOLES: ±0.02  
DIMENSIONAL TOLERANCE FOR THREADED HOLES: ±0.1  
REV. 00 - 14/03/2016

LOCATING

**RP50E\_6 / Retractable locating pin package - Size 50 mm - iØ 12 mm flat termination**

**WEIGHT 1.85 kg**  
min. stroke version

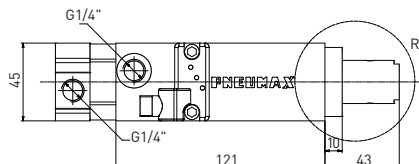
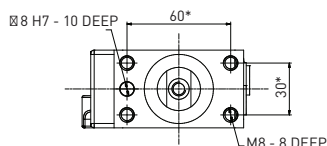
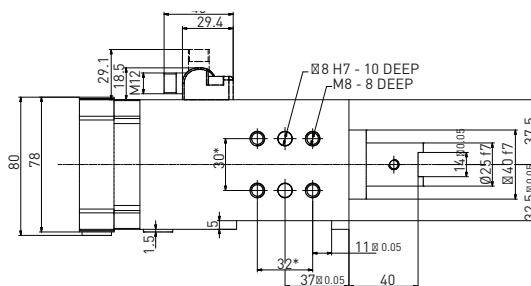
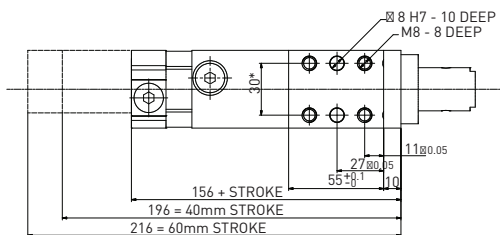
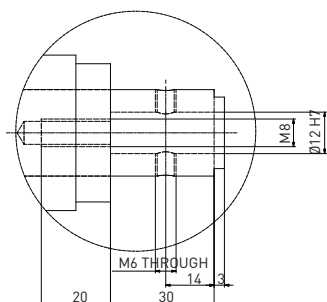
**WEIGHT 2.1 kg**  
max. stroke version



\* DIMENSIONAL TOLERANCE FOR DOWEL HOLES: ±0.02  
DIMENSIONAL TOLERANCE FOR THREADED HOLES: ±0.1  
REV. 01 - 26/02/2016

**RP50E\_7 / Retractable locating pin package - Size 50 mm - iØ 12 mm CNOMO termination**

LOCATING



**WEIGHT 1.85 kg**  
min. stroke version

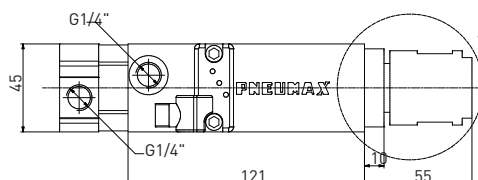
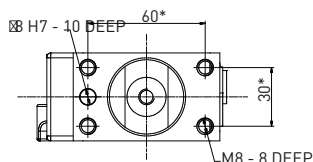
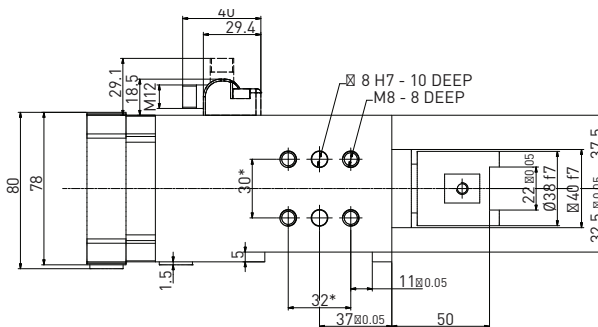
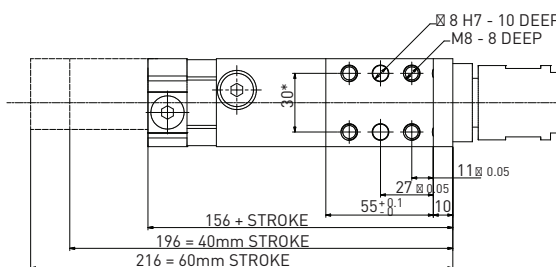
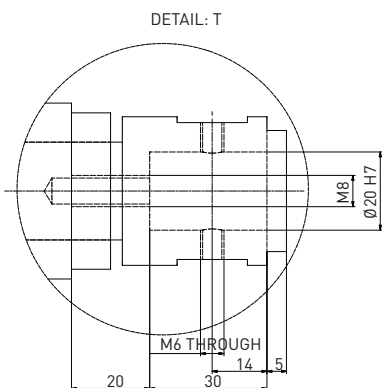
**WEIGHT 2.1 kg**  
max. stroke version

\* DIMENSIONAL TOLERANCE FOR DOWEL HOLES: ±0.02

DIMENSIONAL TOLERANCE FOR THREADED HOLES: ±0.1

REV. 00 - 26/09/2017

**RP50E\_8 / Retractable locating pin package - Size 50 mm - iØ 20 mm CNOMO termination**



**WEIGHT 1.85 kg**  
min. stroke version

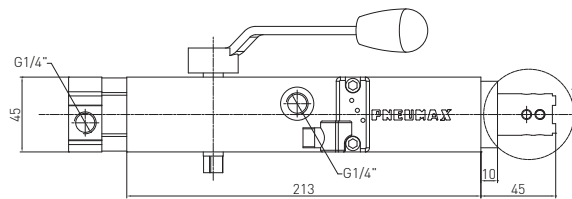
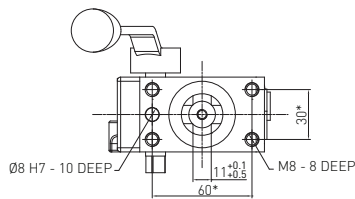
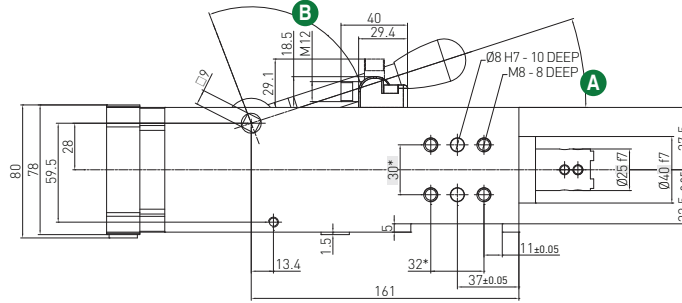
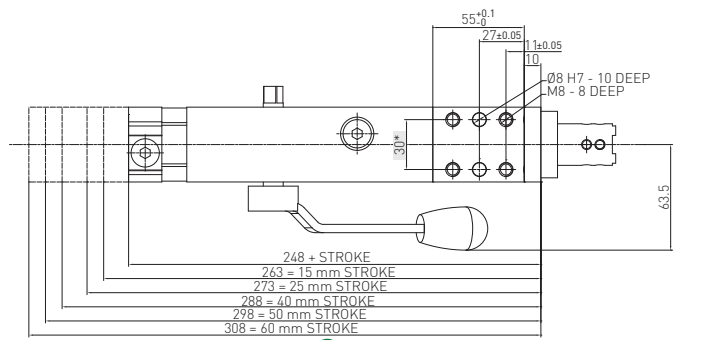
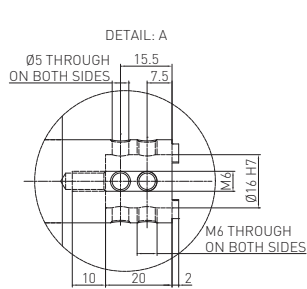
**WEIGHT 2.1 kg**  
max. stroke version

\* DIMENSIONAL TOLERANCE FOR DOWEL HOLES: ±0.02

DIMENSIONAL TOLERANCE FOR THREADED HOLES: ±0.1

REV. 00 - 26/09/2017

**RD250E\_1 / Retractable locating pin package - Size 50 mm - iØ 16 mm cross-cut key rod termination with manual operation**



**WEIGHT 1.85 kg**  
min. stroke version

**WEIGHT 3.1 kg**  
max. stroke version

**Handle swivel angle**

Stroke	A Handle swivel angle	B Handle swivel angle
15	90°	18°
25	70°	38°
40	42°	76°
50	25°	83°
60	15°	93°

Max Hand Force: 200 N

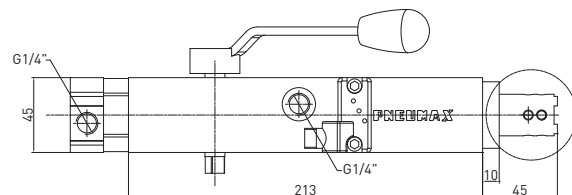
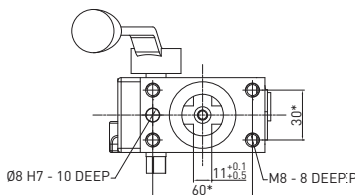
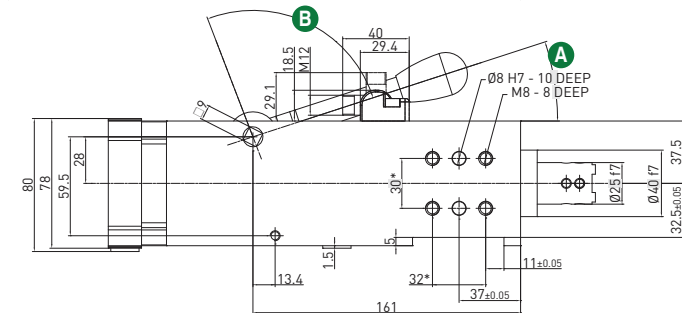
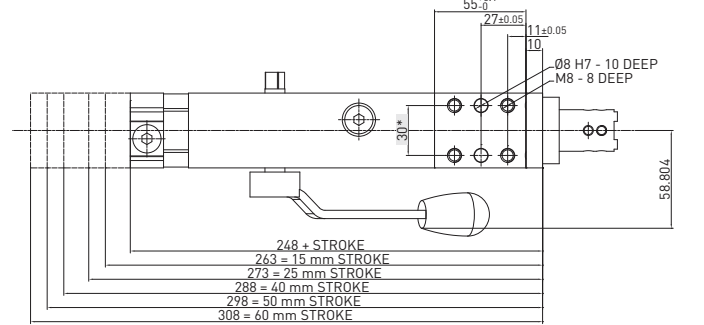
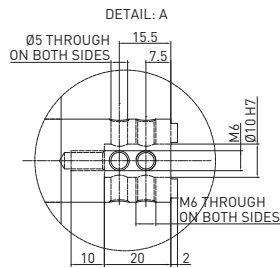
\* DIMENSIONAL TOLERANCE FOR DOWEL HOLES: ±0.02

DIMENSIONAL TOLERANCE FOR THREADED HOLES: ±0.1

REV. 00 - 05/03/2018

LOCATING

**RD250E\_2 / Retractable locating pin package - Size 50 mm - iØ 10 mm cross-cut key rod termination with manual operation**



**WEIGHT 1.85 kg**  
min. stroke version

**WEIGHT 3.1 kg**  
max. stroke version

**Handle swivel angle**

Stroke	A Handle swivel angle	B Handle swivel angle
15	90°	18°
25	70°	38°
40	42°	76°
50	25°	83°
60	15°	93°

Max Hand Force: 200 N

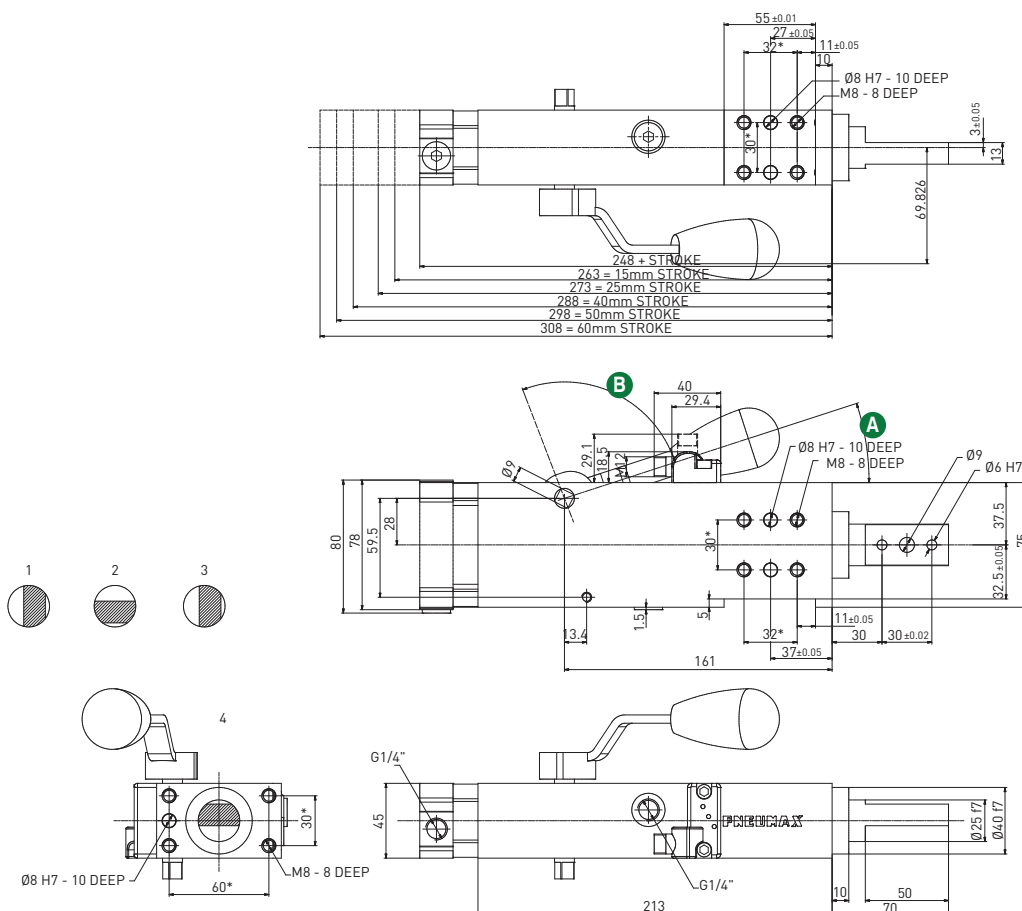
\* DIMENSIONAL TOLERANCE FOR DOWEL HOLES: ±0.02

DIMENSIONAL TOLERANCE FOR THREADED HOLES: ±0.1

REV. 01 - 26/02/2016

**RD250E\_3 / Retractable locating pin package - Size 50 mm - Rod termination for offset pins with manual operation**

LOCATING



**WEIGHT 1.85 kg**  
min. stroke version

**WEIGHT 3.1 kg**  
max. stroke version

**Handle swivel angle**

Stroke	<b>A</b> Handle swivel angle	<b>B</b> Handle swivel angle
15	90°	18°
25	70°	38°
40	42°	76°
50	25°	83°
60	15°	93°

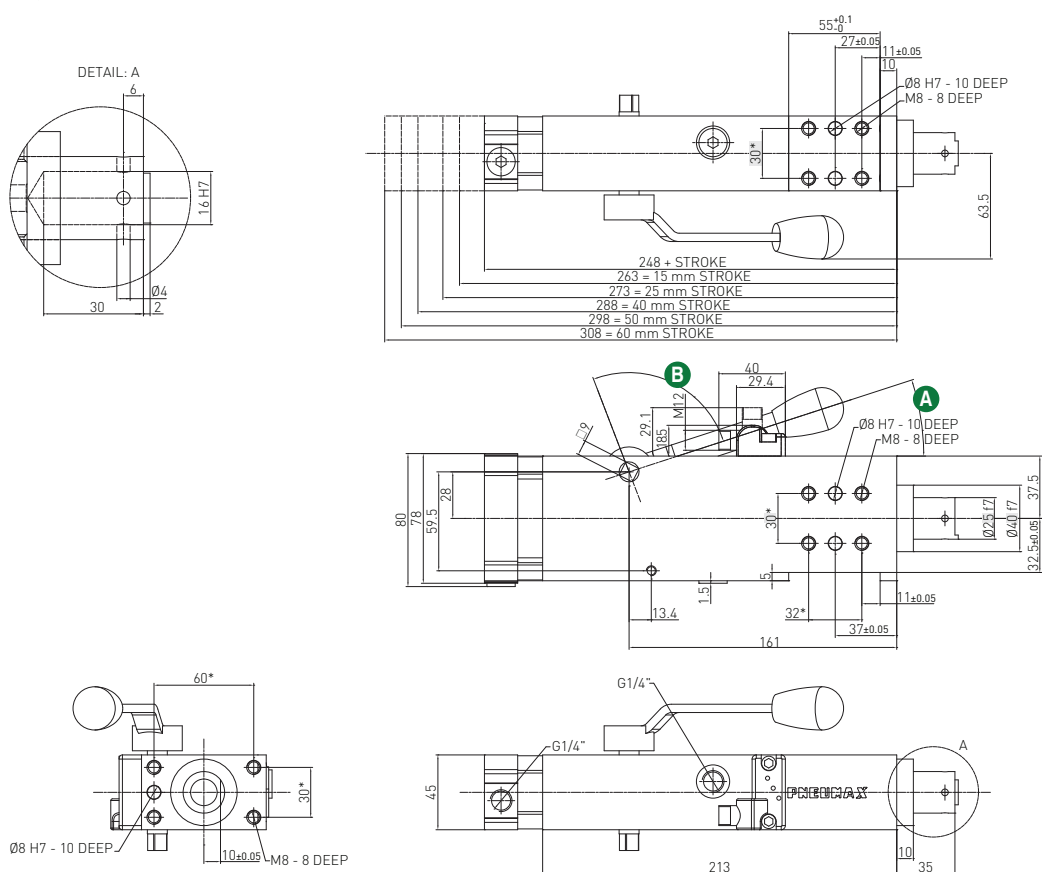
Max Hand Force: 200 N

\* DIMENSIONAL TOLERANCE FOR DOWEL HOLES: ±0.02

DIMENSIONAL TOLERANCE FOR THREADED HOLES: ±0.1

REV. 03 - 05/03/2018

**RD250E\_4 / Retractable locating pin package - Size 50 mm - Rod termination with key with manual operation**



**WEIGHT 2.85 kg**  
min. stroke version

**WEIGHT 3.1 kg**  
max. stroke version

**Handle swivel angle**

Stroke	<b>A</b> Handle swivel angle	<b>B</b> Handle swivel angle
15	90°	18°
25	70°	38°
40	42°	76°
50	25°	83°
60	15°	93°

Max Hand Force: 200 N

\* DIMENSIONAL TOLERANCE FOR DOWEL HOLES: ±0.02

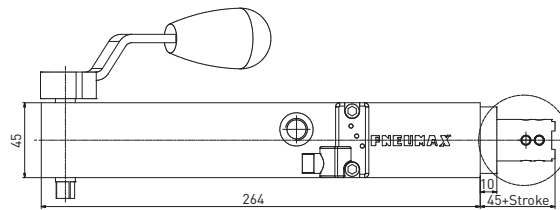
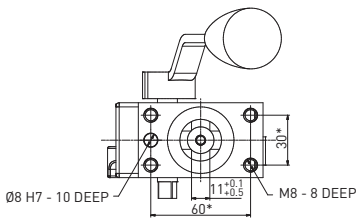
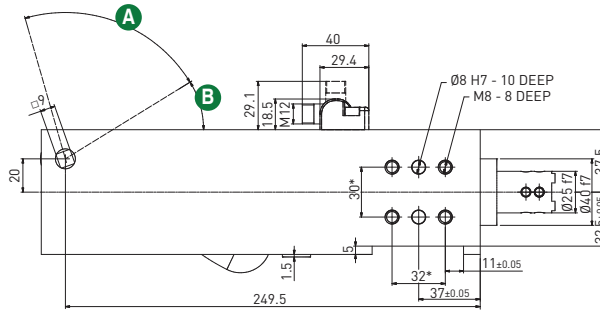
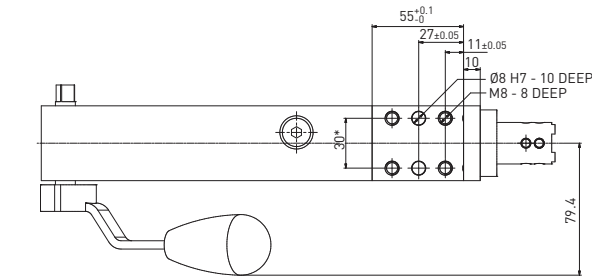
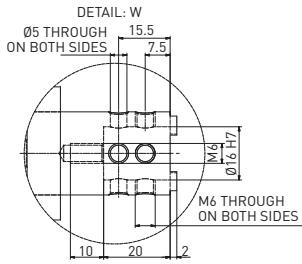
DIMENSIONAL TOLERANCE FOR THREADED HOLES: ±0.1

REV. 04 - 05/03/2018



**RM250 \_1 / Manual retractable locating pin package - Size 50 mm - iØ 16 mm cross-cut key rod termination**

WEIGHT 3.2 kg



Max Hand Force: 200 N

\* DIMENSIONAL TOLERANCE FOR DOWEL HOLES: ±0.02

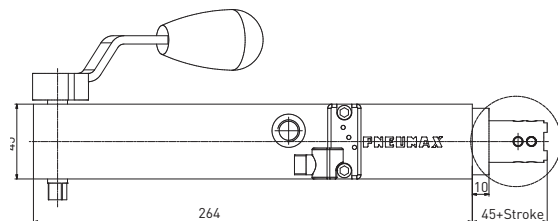
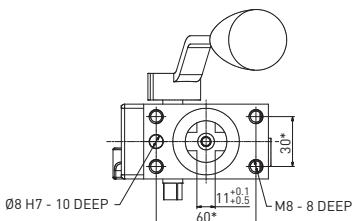
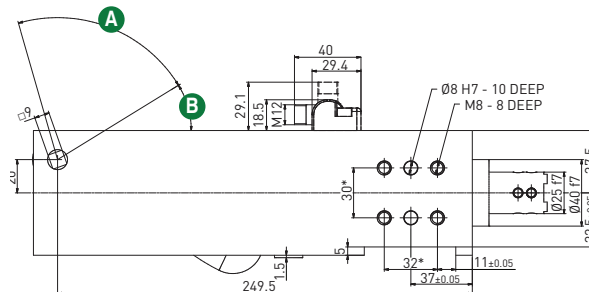
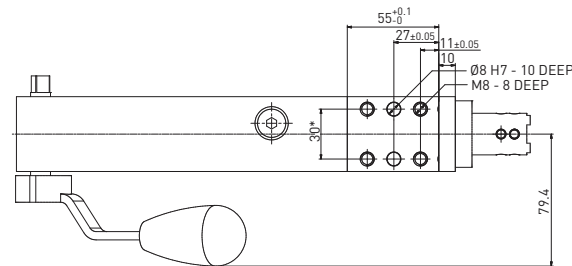
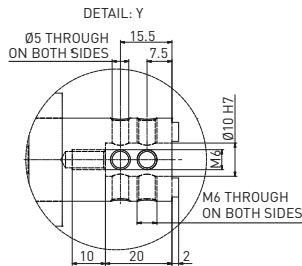
DIMENSIONAL TOLERANCE FOR THREADED HOLES: ±0.1

REV. 00 - 27/01/2022

LOCATING

**RM250 \_2 / Manual retractable locating pin package - Size 50 mm - iØ 16 mm cross-cut key rod termination**

WEIGHT 3.2 kg



Max Hand Force: 200 N

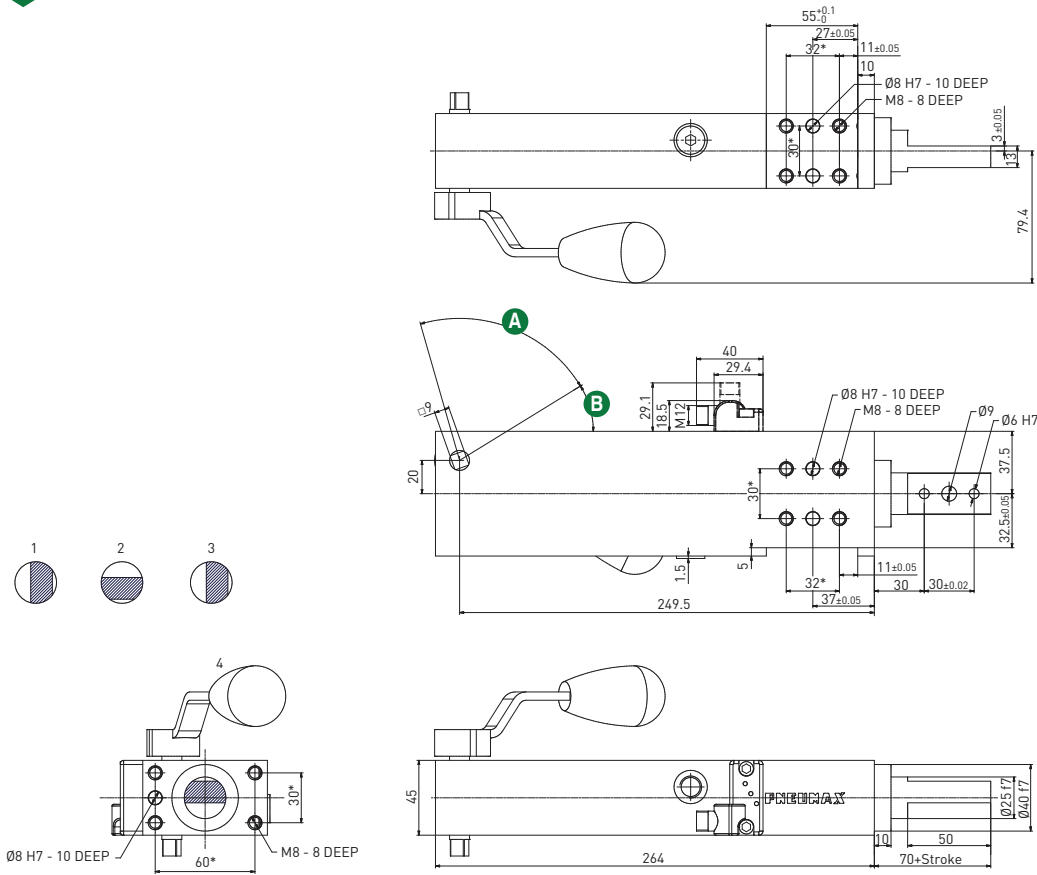
\* DIMENSIONAL TOLERANCE FOR DOWEL HOLES: ±0.02

DIMENSIONAL TOLERANCE FOR THREADED HOLES: ±0.1

REV. 00 - 27/01/2022

**RM250 \_3 / Manual retractable locating pin package - Size 50 mm - iØ 16 mm cross-cut key rod termination**

**WEIGHT 3.2 kg**



**Max Hand Force: 200 N**

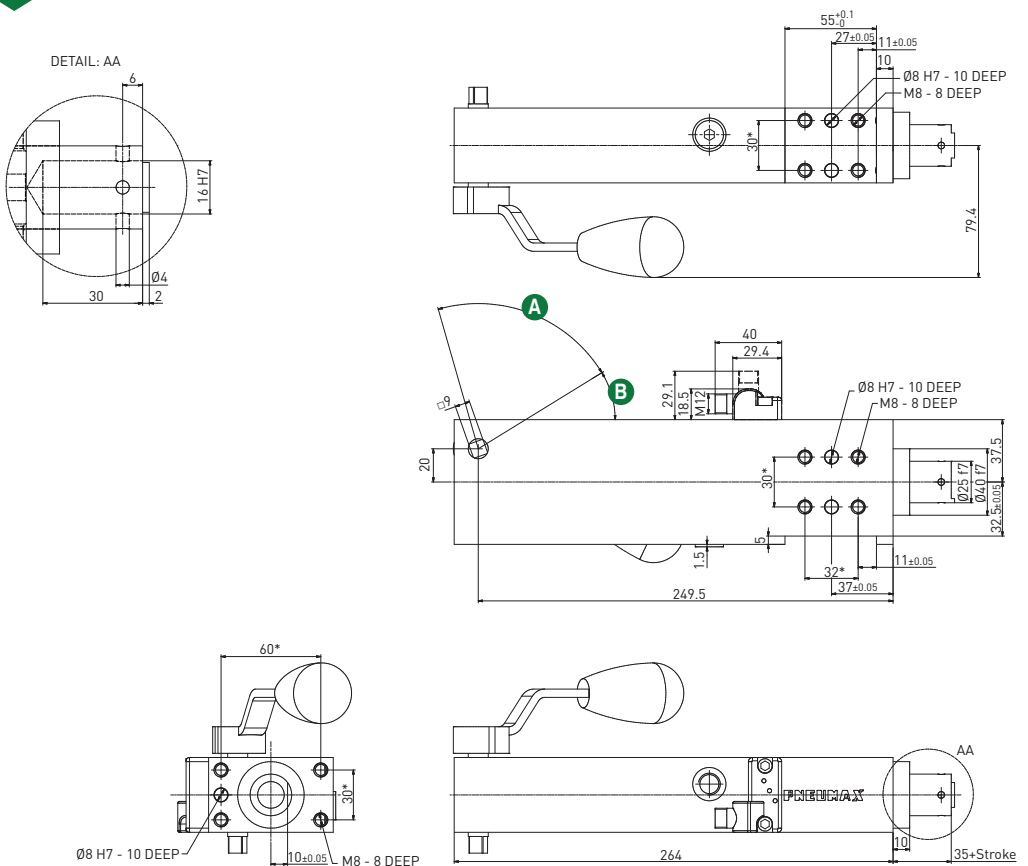
\* DIMENSIONAL  
TOLERANCE FOR  
DOWEL HOLES: ±0.02

DIMENSIONAL  
TOLERANCE FOR  
THREADED HOLES: ±0.1

REV. 00 - 27/01/2022

**RM250 \_4 / Manual retractable locating pin package - Size 50 mm - iØ 16 mm cross-cut key rod termination**

**WEIGHT 3.2 kg**



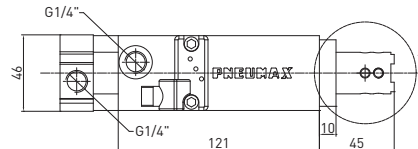
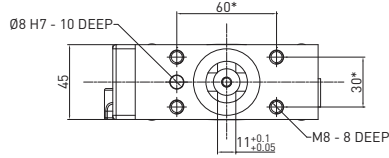
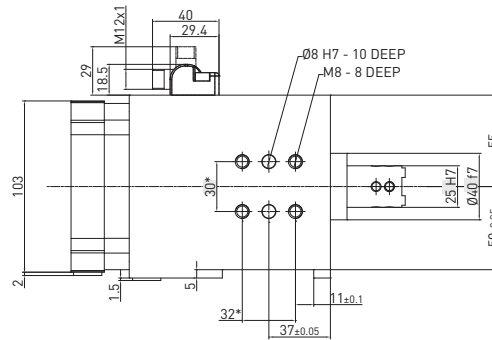
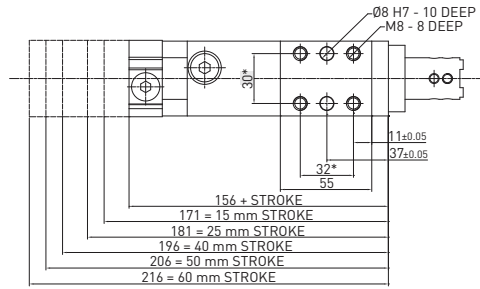
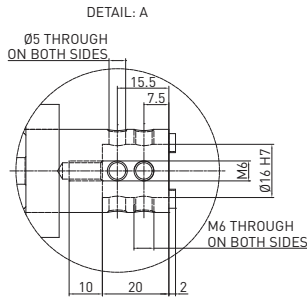
**Max Hand Force: 200 N**

\* DIMENSIONAL  
TOLERANCE FOR  
DOWEL HOLES: ±0.02

DIMENSIONAL  
TOLERANCE FOR  
THREADED HOLES: ±0.1

REV. 00 - 27/01/2022

## RP63E \_1 / Retractable locating pin package - Size 63 mm - iØ 16 mm cross-cut key rod termination



**WEIGHT 2.45 kg**  
min. stroke version

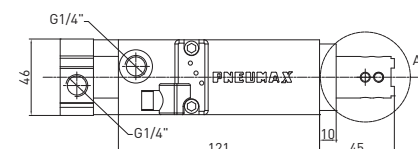
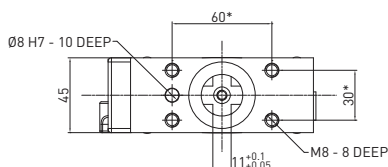
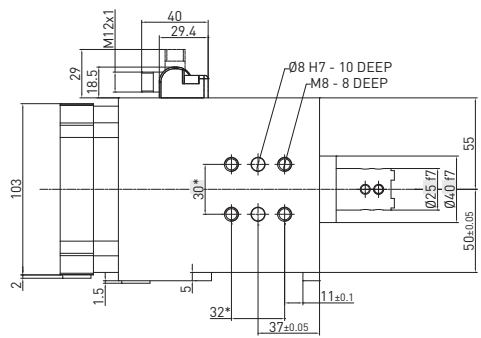
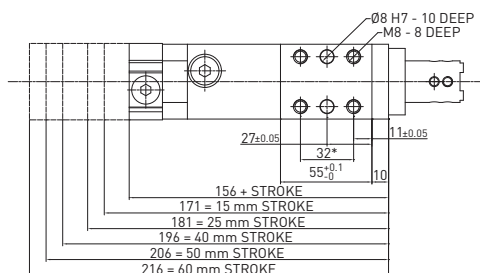
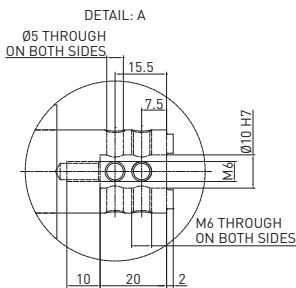
**WEIGHT 2.75 kg**  
max. stroke version

\* DIMENSIONAL TOLERANCE FOR DOWEL HOLES: ±0.02

DIMENSIONAL TOLERANCE FOR THREADED HOLES: ±0.1

REV. 01 - 29/02/2016

## RP63E \_2 / Retractable locating pin package - Size 63 mm - iØ 10 mm cross-cut key rod termination



**WEIGHT 2.45 kg**  
min. stroke version

**WEIGHT 2.75 kg**  
max. stroke version

\* DIMENSIONAL TOLERANCE FOR DOWEL HOLES: ±0.02

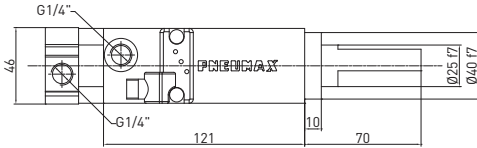
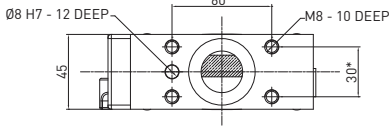
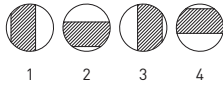
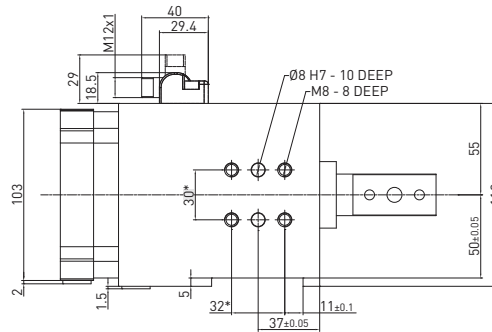
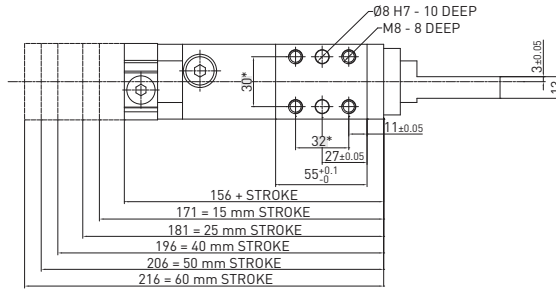
DIMENSIONAL TOLERANCE FOR THREADED HOLES: ±0.1

REV. 01 - 29/02/2016

**RP63E\_3 / Retractable locating pin package - Size 63 mm - Rod termination for offset pins**

**WEIGHT 2.45 kg**  
min. stroke version

**WEIGHT 2.75 kg**  
max. stroke version



\* DIMENSIONAL  
TOLERANCE FOR  
DOWEL HOLES: ±0.02

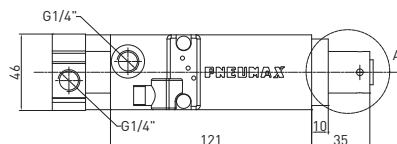
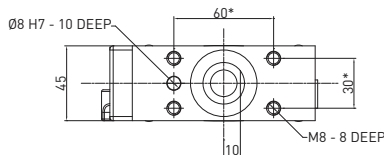
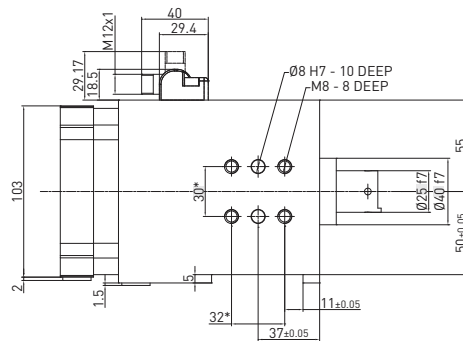
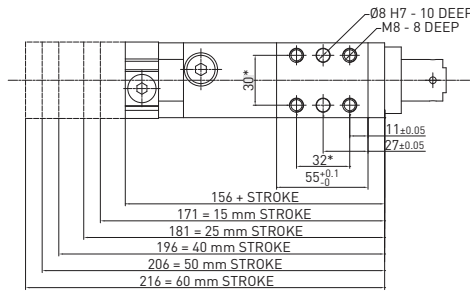
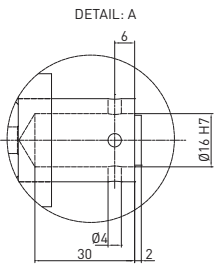
DIMENSIONAL  
TOLERANCE FOR  
THREADED HOLES: ±0.1

REV. 00 - 31/03/2015

**RP63E\_4 / Retractable locating pin package - Size 63 mm - Rod termination with key**

**WEIGHT 2.45 kg**  
min. stroke version

**WEIGHT 2.75 kg**  
max. stroke version



\* DIMENSIONAL  
TOLERANCE FOR  
DOWEL HOLES: ±0.02

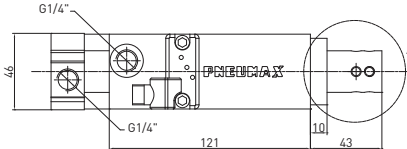
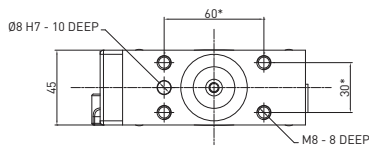
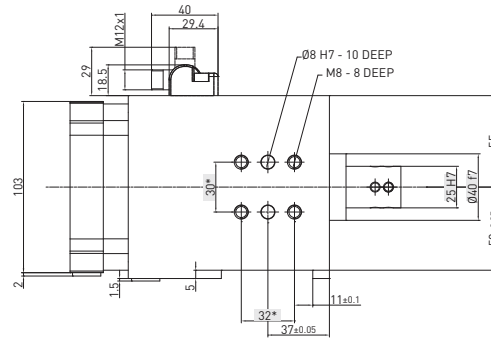
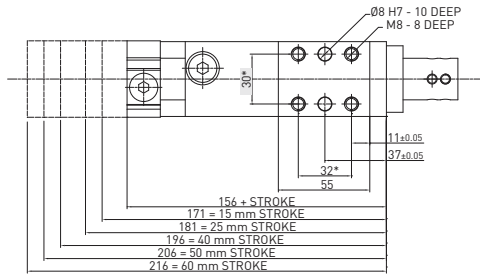
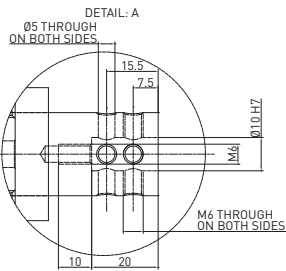
DIMENSIONAL  
TOLERANCE FOR  
THREADED HOLES: ±0.1

REV. 00 - 31/03/2015

**RP63E\_5 / Retractable locating pin package - Size 63 mm - iØ 10 mm flat termination**

**WEIGHT 2.45 kg**  
min. stroke version

**WEIGHT 2.75 kg**  
max. stroke version



\* DIMENSIONAL TOLERANCE FOR DOWEL HOLES: ±0.02

DIMENSIONAL TOLERANCE FOR THREADED HOLES: ±0.1

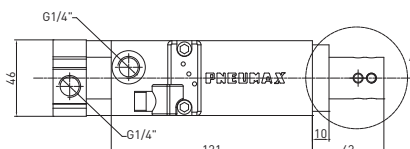
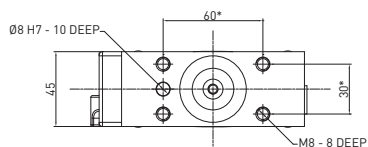
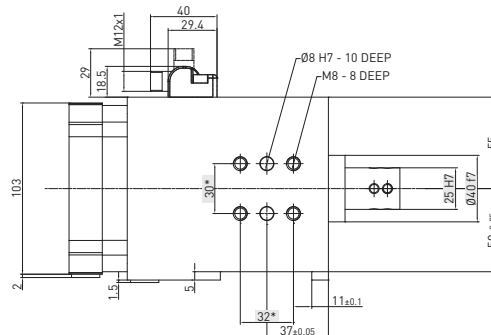
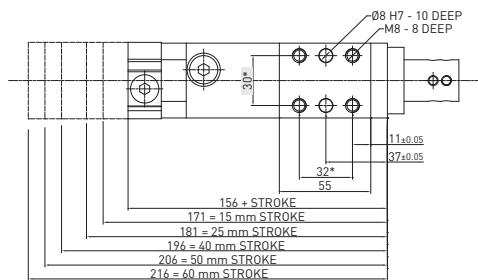
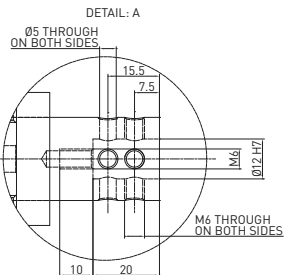
REV. 00 -15/03/2016

LOCATING

**RP63E\_6 / Retractable locating pin package - Size 63 mm - iØ 12 mm flat termination**

**WEIGHT 2.45 kg**  
min. stroke version

**WEIGHT 2.75 kg**  
max. stroke version



\* DIMENSIONAL TOLERANCE FOR DOWEL HOLES: ±0.02

DIMENSIONAL TOLERANCE FOR THREADED HOLES: ±0.1

REV. 00 -15/03/2016