

Pivoting

Robust and reliable pivot units to accurately position and/or rotate tooling or parts to work condition



Quick set-up



Robust conical roller bearings

PIVOTING

Easy set-up and quick installation time

The orientation of the ports can be easily achieved by untightening the tie rods.

No external limit stop required

Pneumatic cushioning of both end positions: fixed orifices and integrated cushioning provide for smooth operation in the closing and opening cycles.

Robust conical roller bearings

Drive shaft connections are all equipped with robust conical roller bearings for a **high load capacity and side load acceptance**.

All enclosed mechanism

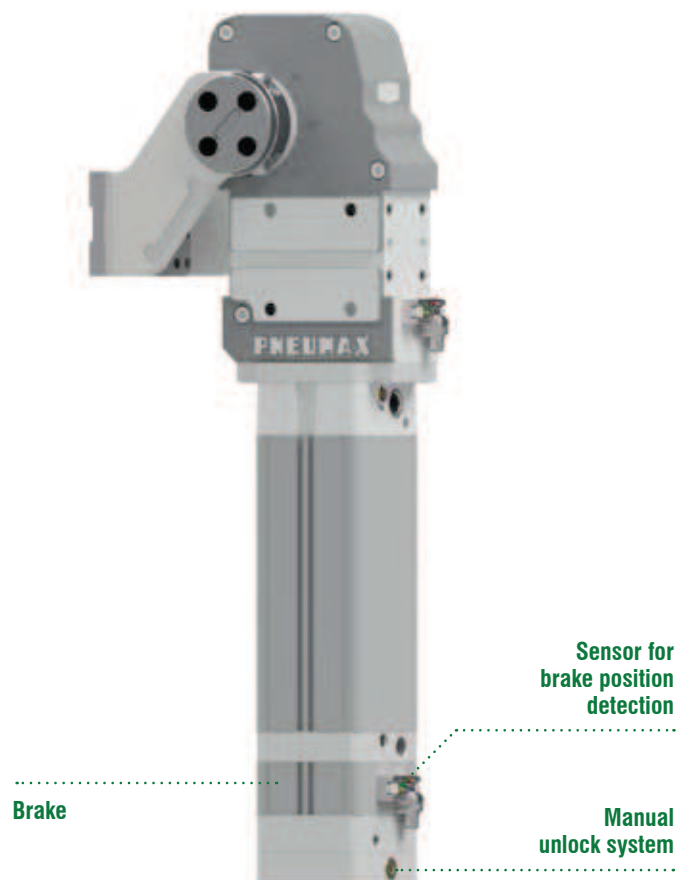
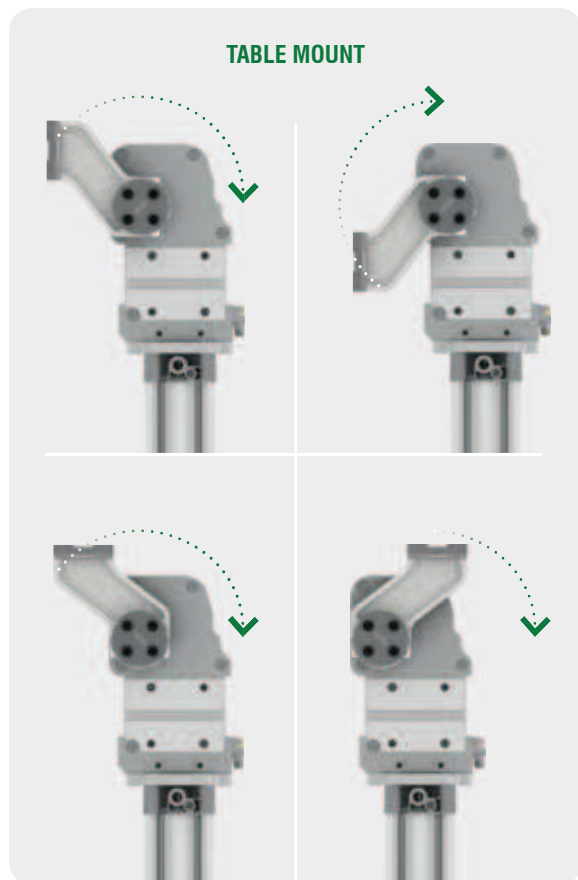
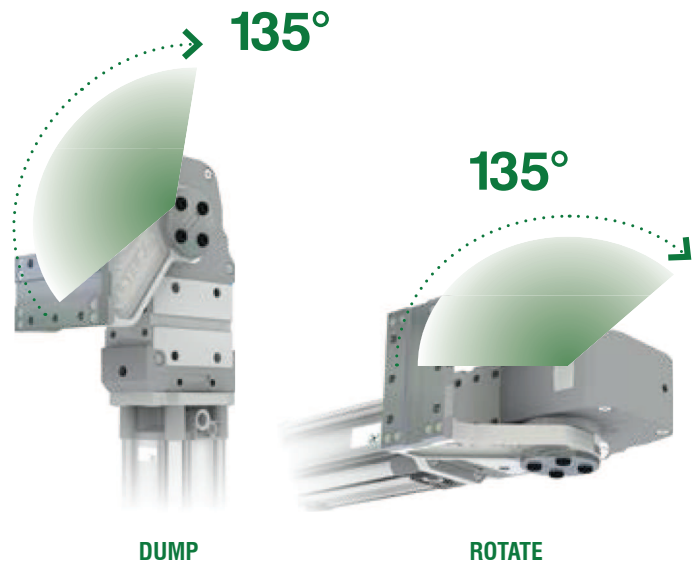
to ensure a high protection degree against contaminants and years of service life **without maintenance** to minimize downtime associated with contamination.

Power pivots

P-Series

The P series can be mounted by its rear or front mount and can be used as a **DUMP** device. By mounting the pivot units by their lateral mounts, they can be used to **ROTATE** parts, tooling and clamps' assemblies.

- Remains locked even after loss of air pressure
- Front, rear and side mounting surfaces
- Four table mounting positions available
- 1 sensor for all sizes and opening angle with stepless adjustable connector
- Extra light products



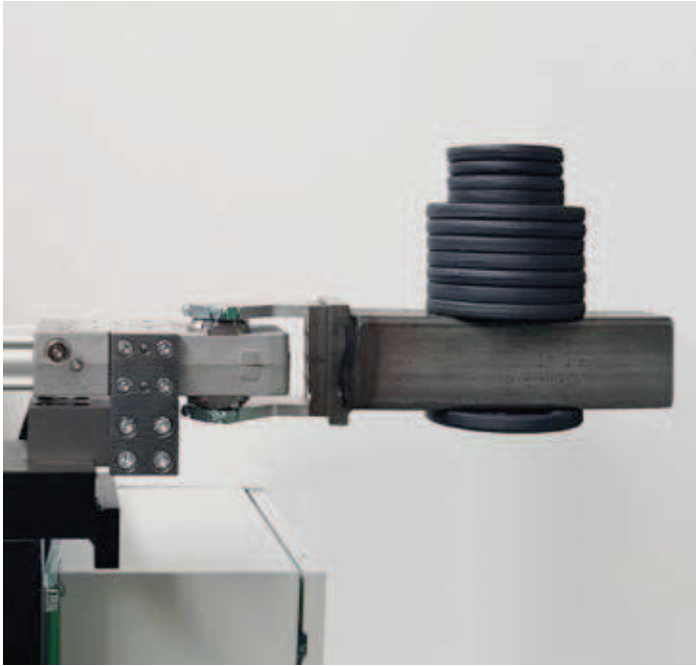
P63-Series

Pneumax guarantees high reliability of all products through a 100% testing procedure made by the Automotive division Quality Department.

Conforming to standard

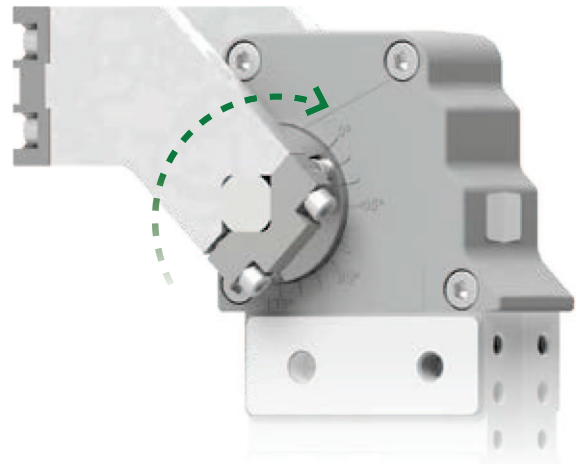
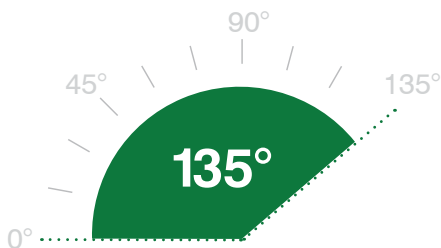


PIVOTING



Max swivel angle: 135°

The only fully adjustable opening angle from 0° to 135° in the market.



P-Series



INTERNATIONAL
MOUNT

GLOBAL STANDARD COMPONENTS
NAAMS

Pivot units

Technical features

Manual release button to open the linkage when air pressure is removed during setup.

Operating features

Operating pressure from 2 to 8 bar / from 30 to 115 psi

Lubrication all the devices are lubricated for life at the factory. Inline air lubrication isn't required

Functional charts

- **Max opening angle for table positions**

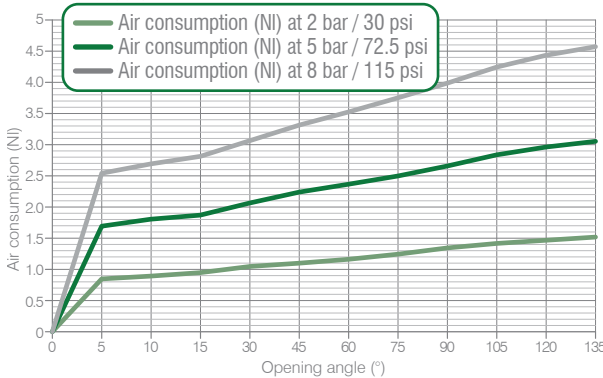
	Pos. 1	Pos. 2	Pos. 3	Pos. 4
135°	✓	✗	✓	✗
120°	✓	✗	✓	✗
115°	✓	✓	✓	✗
90°	✓	✓	✓	✗
60°	✓	✓	✓	✓
45°	✓	✓	✓	✓

Any intermediate opening angle is available upon request

Size 63 mm

- **Admissible load moment**
16 N m / 10,32 lb-ft
- **Holding moment**
1.500 N m / 1.106,34 lb-ft

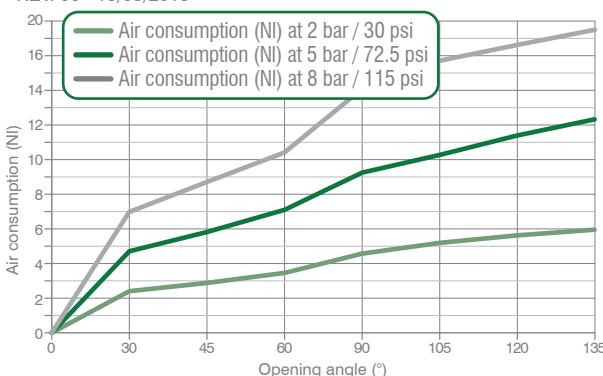
- **Air consumption** / Complete cycle (opening and closing)
REV. 00 - 17/06/2015



Size 100 mm

- **Admissible load moment**
130 N m / 95,88 lb-ft
- **Holding moment**
2.500 N m / 1.843,90 lb-ft

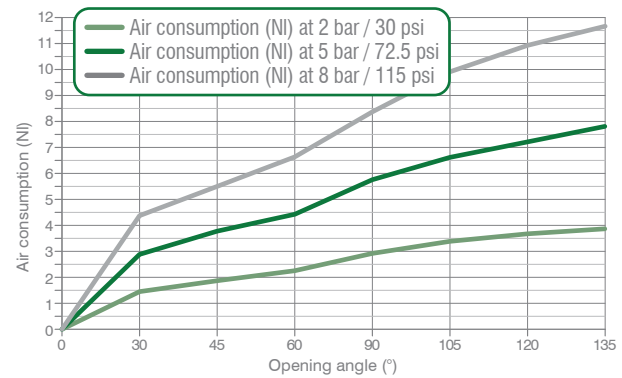
- **Air consumption** / Complete cycle (opening and closing)
REV. 00 - 15/05/2015



Size 80 mm

- **Admissible load moment**
70 N m / 51,62 lb-ft
- **Holding moment**
2.500 N m / 1.843,90 lb-ft

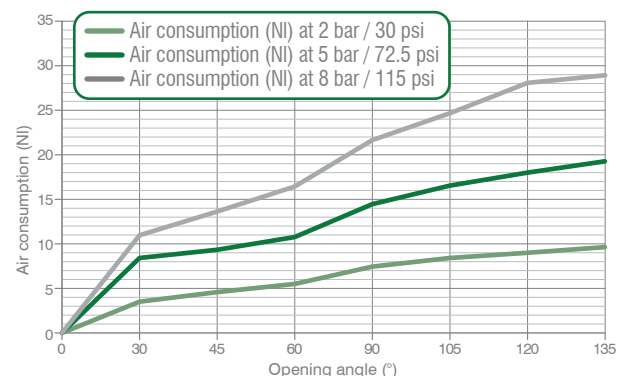
- **Air consumption** / Complete cycle (opening and closing)
REV. 00 - 15/05/2015



Size 125 mm

- **Admissible load moment**
180 N m / 132,76 lb-ft
- **Holding moment**
2.500 N m / 1.843,90 lb-ft

- **Air consumption** / Complete cycle (opening and closing)
REV. 00 - 15/05/2015



Ordering string
Size 63
P 63 E G 1 1 N ADJ

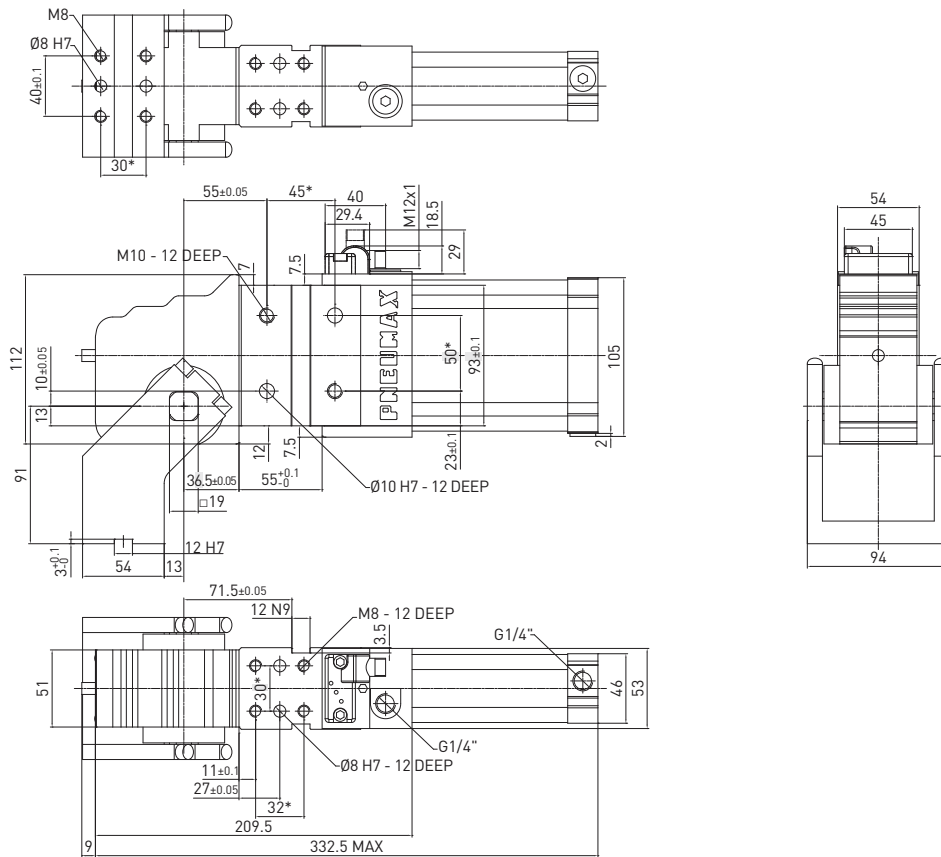
P	VERSION	P = Pivot unit
63	SIZE	63 = Ø 63 mm
E	SENSOR	E = electronic sensor with M12 swivel connector - PNP A = electronic sensor with M12 swivel connector - NPN N = no sensor B = electronic sensor with M8 swivel connector - PNP
G	PORTS	G = G thread – BSPP
1	MOUNTING PATTERN	1 = International mount 2 = NAAMS Standard
1	TABLE MOUNT	1 = 2 = 3 = 4 =
N	BRAKE SYSTEM	N = no brake
ADJ	OPENING ANGLE	ADJ = stepless opening angle from 0° to 135°

Size 80, 100, 125
P 80 E 1 G 1 N 45 U

P	VERSION	P = Pivot unit
80	SIZE	80 = Ø 80 mm 100 = Ø 100 mm 125 = Ø 125 mm
E	SENSOR	E = electronic sensor with M12 swivel connector - PNP A = electronic sensor with M12 swivel connector - NPN N = no sensor B = electronic sensor with M8 swivel connector - PNP
1	SUPPLY PORTS POSITION	1 = on the left side from the sensor 2 = on the front side 3 = on the right side from the sensor 4 = on the sensor's side
		The supply ports position of the brake is the same as the cylinder's
G	PORTS	G = G thread – BSPP
1	TABLE MOUNT	1 = 2 = 3 = 4 =
N	BRAKE SYSTEM	B = brake N = no brake S = sensor on the brake
45	OPENING ANGLE	45° 60° 90° 120° 135°
		Any intermediate opening angle is available upon request - Please see the charts for table position as well as for max. opening angle
U	UNLOCK MECHANISM FOR THE BRAKE	U = unlock mechanism (only for brake system: B,S)

P63EG1 / Pivot unit - International mount - Size 63 mm

WEIGHT 6.5 kg

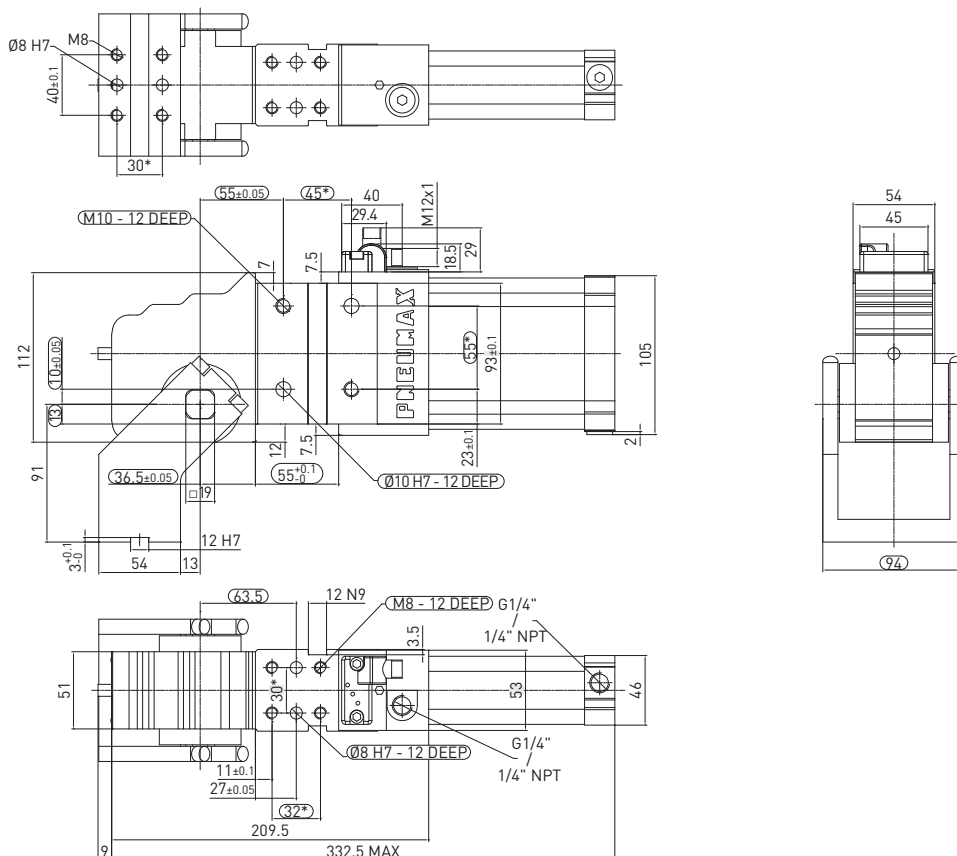


* DIMENSIONAL TOLERANCE FOR DOWEL HOLES: ±0.02
DIMENSIONAL TOLERANCE FOR THREADED HOLES: ±0.1

REV. 00 - 02/08/2019

P63EG2 / Pivot unit - NAAMS Std - Size 63 mm

WEIGHT 6.5 kg

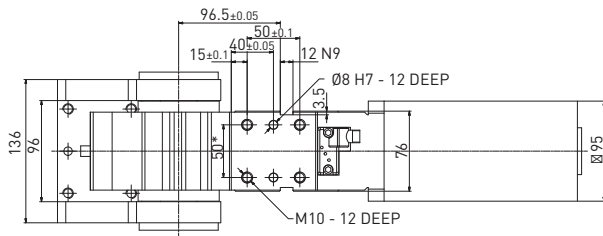
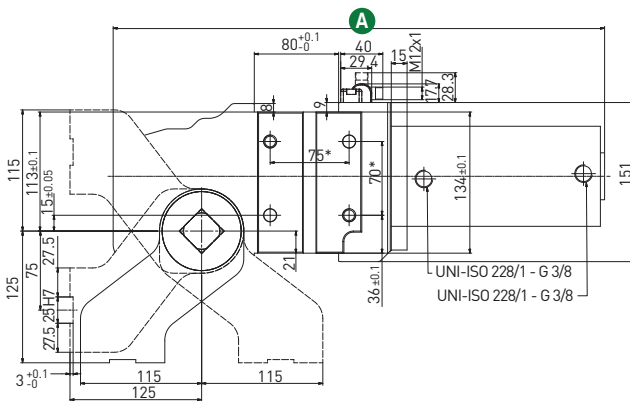
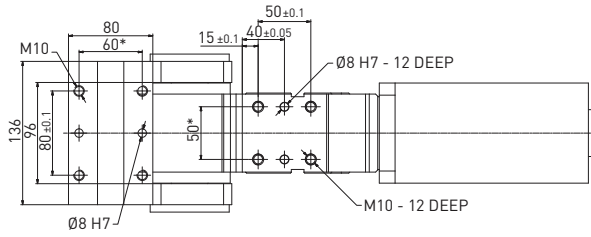


* DIMENSIONAL TOLERANCE FOR DOWEL HOLES: ±0.02
DIMENSIONAL TOLERANCE FOR THREADED HOLES: ±0.1

REV. 00 - 02/08/2019

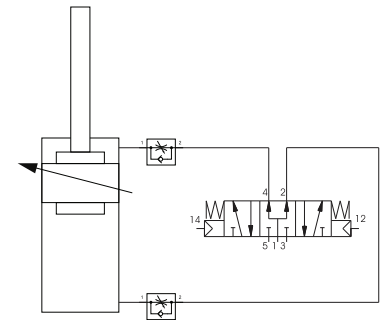
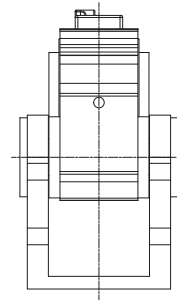
P80_N / Pivot Unit - Size 80 mm

WEIGHT 10.7 kg
135° version



Overall length

opening angle	A Overall length (mm)
45°	466.5
60°	479
90°	504.5
120°	529
135°	537

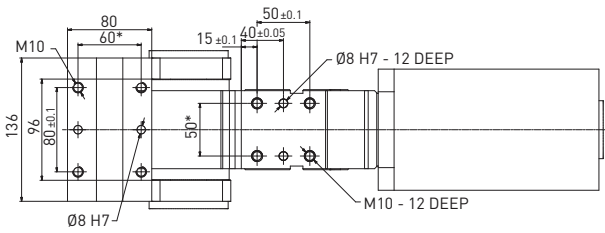


* DIMENSIONAL TOLERANCE
FOR DOWEL HOLES: ±0.02
DIMENSIONAL TOLERANCE
FOR THREADED HOLES: ±0.1

REV. 02 - 05/05/2021

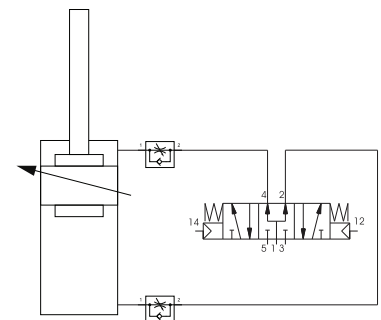
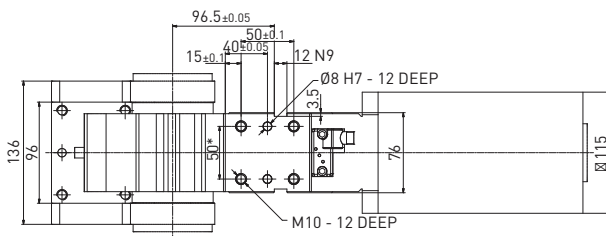
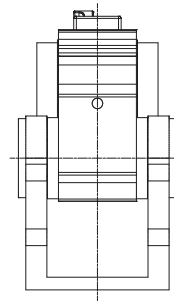
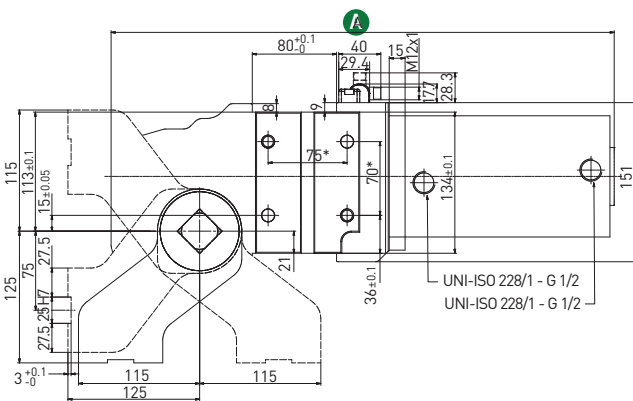
P100_N / Pivot Unit - Size 100 mm

WEIGHT 12.1 kg
135° version



Overall length

opening angle	A Overall length (mm)
45°	477.5
60°	490
90°	515,5
120°	540
135°	548

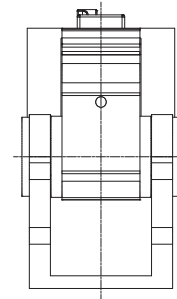
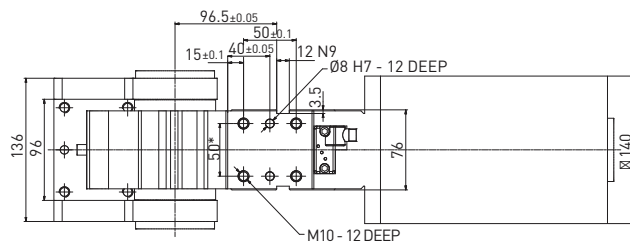
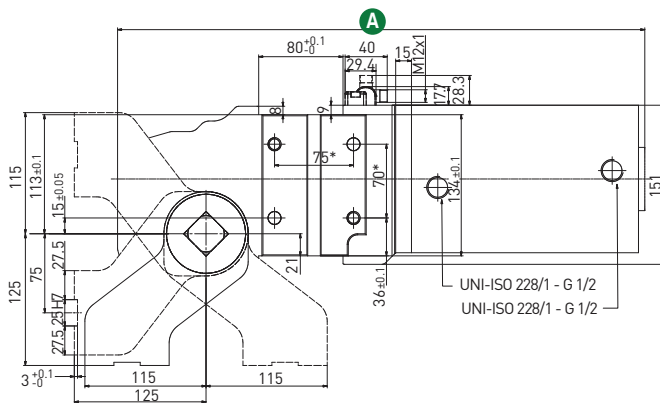
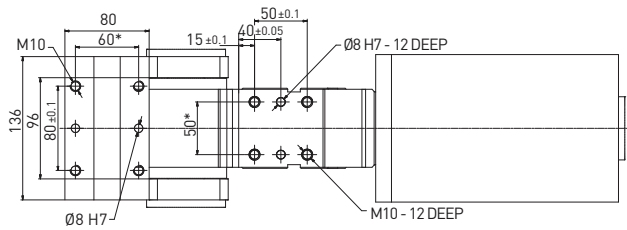


* DIMENSIONAL TOLERANCE
FOR DOWEL HOLES: ± 0.02
DIMENSIONAL TOLERANCE
FOR THREADED HOLES: ± 0.1

REV. 02 - 05/05/2021

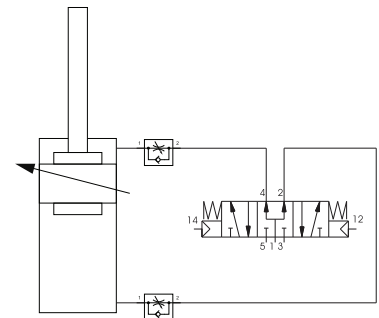
P125_N / Pivot Unit - Size 125 mm

WEIGHT 15.8 kg
135° version



Overall length

opening angle	A Overall length (mm)
45°	500.5
60°	513
90°	538.5
120°	563
135°	571

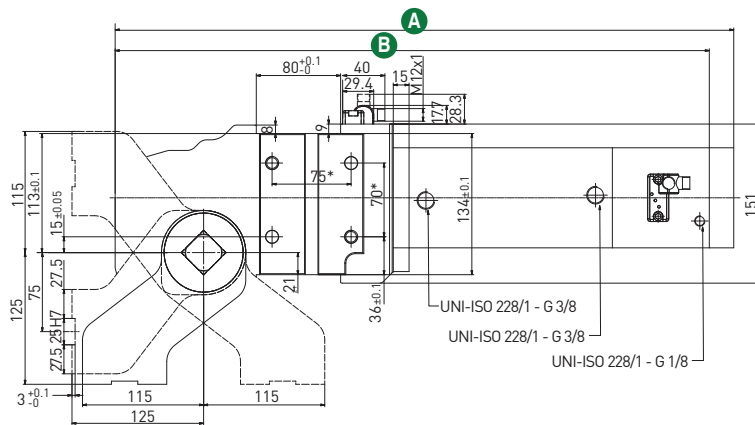
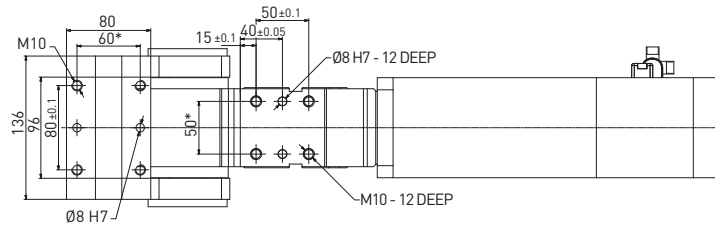


* DIMENSIONAL TOLERANCE
FOR DOWEL HOLES: ±0.02
DIMENSIONAL TOLERANCE
FOR THREADED HOLES: ±0.1

REV. 02 - 05/05/2021

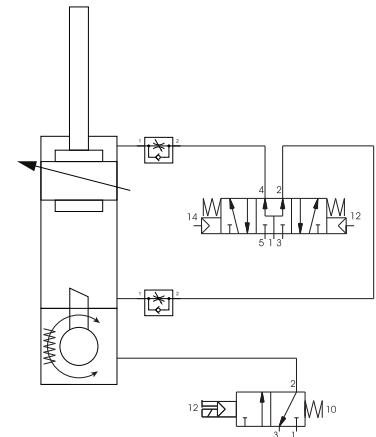
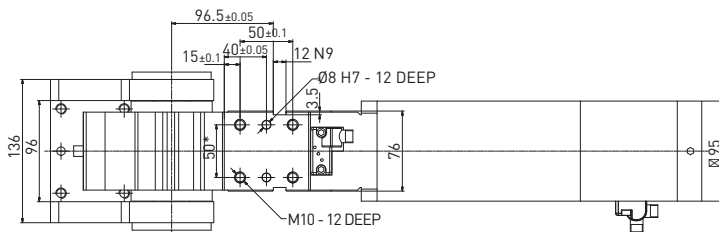
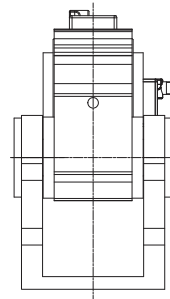
P80E_B/S / Pivot Unit - Size 80 mm

WEIGHT 15.00 kg
135° version



Overall length

opening angle	A Overall length (mm)	B Overall length (mm)
45°	587.3	564
60°	599.8	576.5
90°	625.3	602
120°	649.8	626.5
135°	657.8	634.5

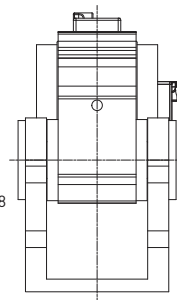
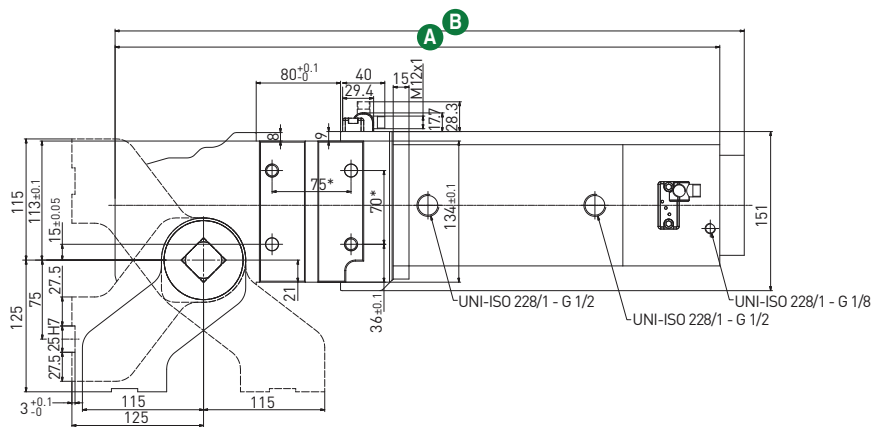
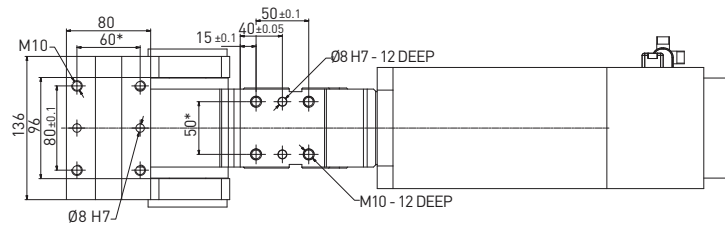


* DIMENSIONAL TOLERANCE
FOR DOWEL HOLES: ±0.02
DIMENSIONAL TOLERANCE
FOR THREADED HOLES: ±0.1

REV. 00 - 05/05/2021

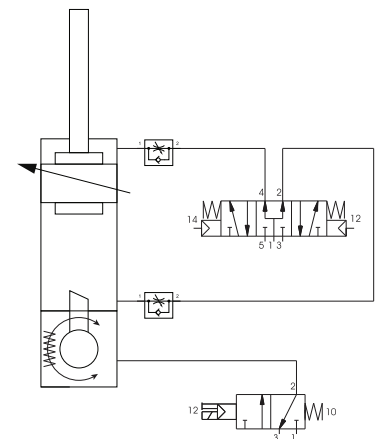
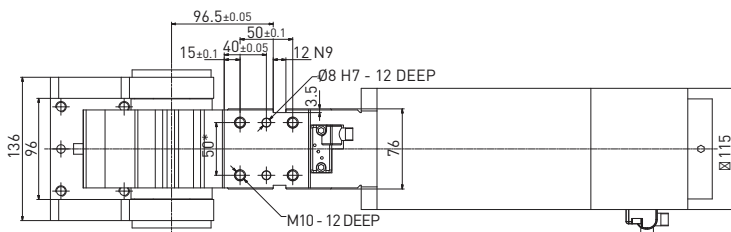
P100E_B/S / Pivot Unit - Size 100 mm

WEIGHT 16.00 kg
135° version



Overall length

opening angle	A Overall length (mm)	B Overall length (mm)
45°	597.3	574
60°	607.8	584.5
90°	635.3	612
120°	659.8	636.5
135°	667.8	644.5



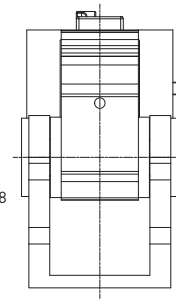
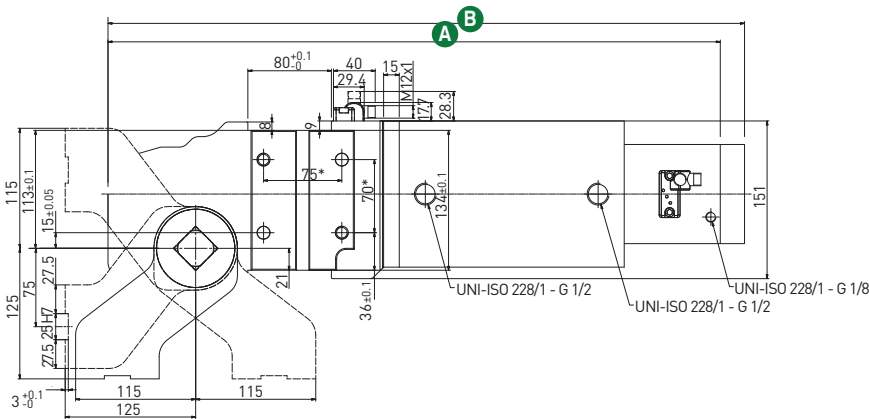
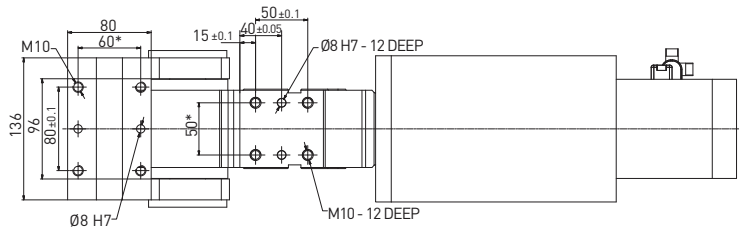
* DIMENSIONAL TOLERANCE
FOR DOWEL HOLES: ±0.02

DIMENSIONAL TOLERANCE
FOR THREADED HOLES: ±0.1

REV. 00 - 05/05/2021

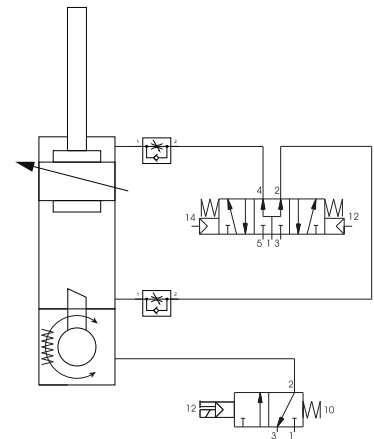
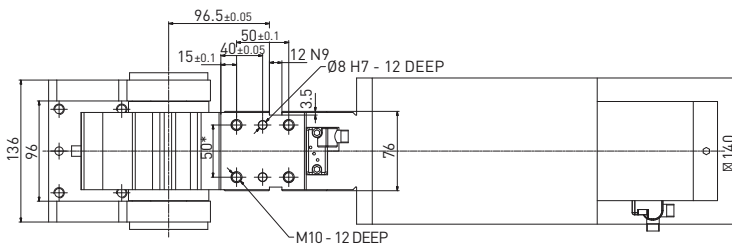
P125E__B/S__ / Pivot Unit - Size 125 mm

WEIGHT 19.5 kg
135° version



Overall length

opening angle	A Overall length (mm)	B Overall length (mm)
45°	609.8	586.5
60°	622.3	599
90°	647.8	624.5
120°	672.3	649
135°	680.3	657



* DIMENSIONAL TOLERANCE
FOR DOWEL HOLES: ±0.02
DIMENSIONAL TOLERANCE
FOR THREADED HOLES: ±0.1

REV. 00 - 05/05/2021