



# CL-Series

## Pneumatic clamp



**Extra-light products**



**550gr  
WEIGHT**

Miniature light-weight series, enclosed toggle-locking mechanism, compact and light-duty for testing applications, welding and fixture checking.

CLAMPING

### Technical features

**Manual release button** to open the linkage when air pressure is removed during setup.

#### Operating features

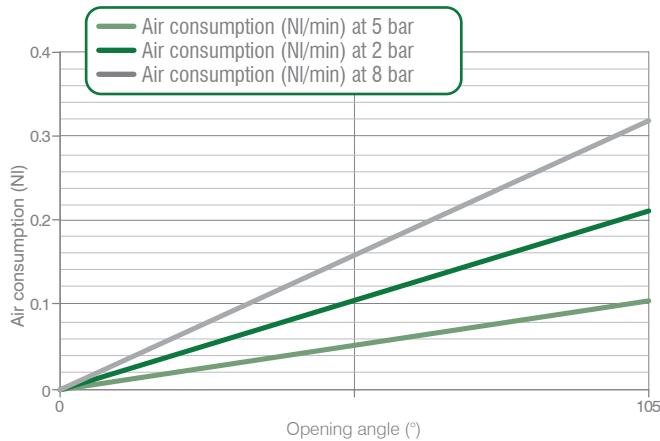
<b>Operating pressure</b>	from 2 to 8 bar / from 30 to 115 psi
<b>Lubrication</b>	all the devices are lubricated for life at the factory. Inline air lubrication isn't required

### Functional charts

#### Size 25 mm

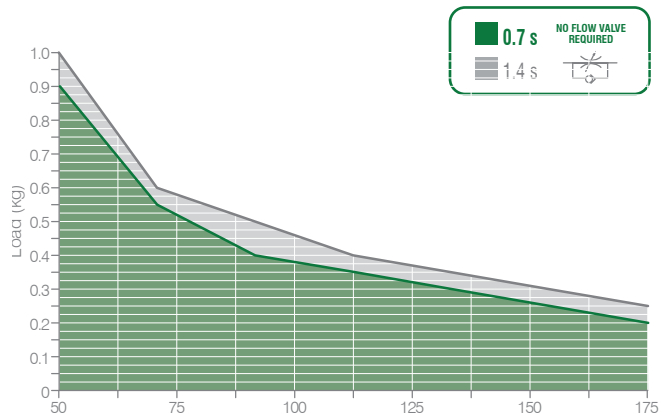
- Air consumption**

Air consumption for complete cycle (opening and closing)  
REV. 00 - 17/06/2015



- Tooling weight chart**

5 bar operating pressure – 105° opening angle  
REV. 00 - 18/11/2016



- Clamping moment (at 5 bar / 72.5 psi)**  
**25 N m / 18,43 lb-ft**

- Holding moment**  
**50 N m / 36,87 lb-ft**





The above data are meant for correct working conditions of the clamp with the same performance level during its life time. For applications which exceed the above data, please contact our sales representatives.

**CL-Series / Ordering string**

**CL-Series**

**C L 25 E G 1 A 01**

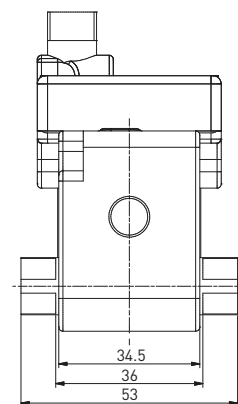
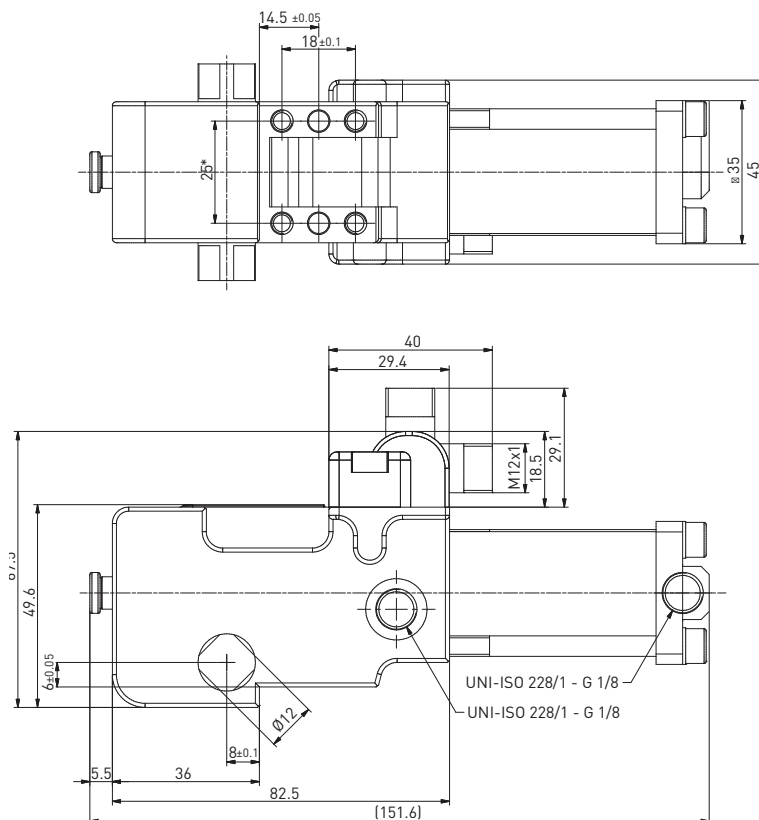
CLAMPING

<b>C</b>	<b>VERSION</b>	<b>C</b> = clamp
<b>L</b>	<b>SERIES</b>	<b>L</b> = light - Weight
<b>25</b>	<b>SIZE</b>	<b>25</b> = Ø 25 mm
<b>E</b>	<b>SENSOR</b>	<b>E</b> = electronic sensor with M12 swivel connector - PNP <b>A</b> = electronic sensor with M12 swivel connector - NPN <b>N</b> = no sensor <b>B</b> = electronic sensor with M8 swivel connector - PNP
<b>G</b>	<b>PORTS</b>	<b>G</b> = G thread – BSPP
<b>1</b>	<b>ARM MOUNT</b>	<b>1</b> =  <b>2</b> =  <b>3</b> =  <b>4</b> = 
<b>A</b>	<b>ARM MATERIAL</b>	<b>A</b> = aluminum
<b>01</b>	<b>CLAMP ARM TYPE</b>	<b>01</b> = wishbone, central, 0 mm offset <b>13</b> = H, 0 mm offset <b>04</b> = wishbone, central, 10 mm offset <b>14</b> = H, 10 mm offset

Please see the charts in the datasheets for arm position as well as for max. opening angle. NAAMS clamping arms to be ordered separately

**CL25EG / Light - weight - pneumatic clamp - size 25 mm**

**WEIGHT 550 gr**

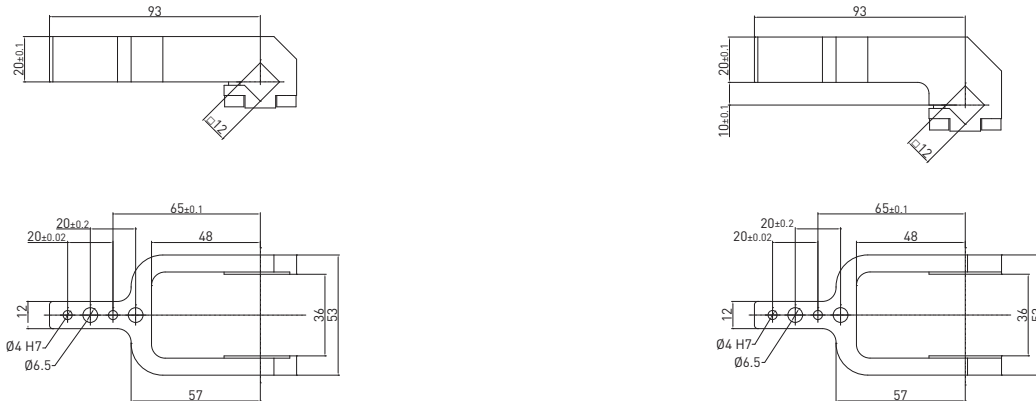


\* DIMENSIONAL TOLERANCE FOR DOWEL HOLES: ±0.02  
DIMENSIONAL TOLERANCE FOR THREADED HOLES: ±0.1

REV. 00 - 14/06/2021

## Clamping arms / 12 mm shaft for clamps' size 25 mm

REV. 02 - 07/10/2015



### 12 mm shaft – 0 mm offset

Part no.	Material	Version	Weight (kg)	Max op. angle pos. 1	Max op. angle pos. 2	Max op. angle pos. 3	Max op. angle pos. 4
<b>B12012</b>	<b>Aluminum</b>	<b>Central</b>	<b>0.127</b>	<b>135°</b>	<b>105°</b>	<b>135°</b>	<b>90°</b>

Screws: M5x14 Tightening torque: 5 N m / 3.68 lb ft

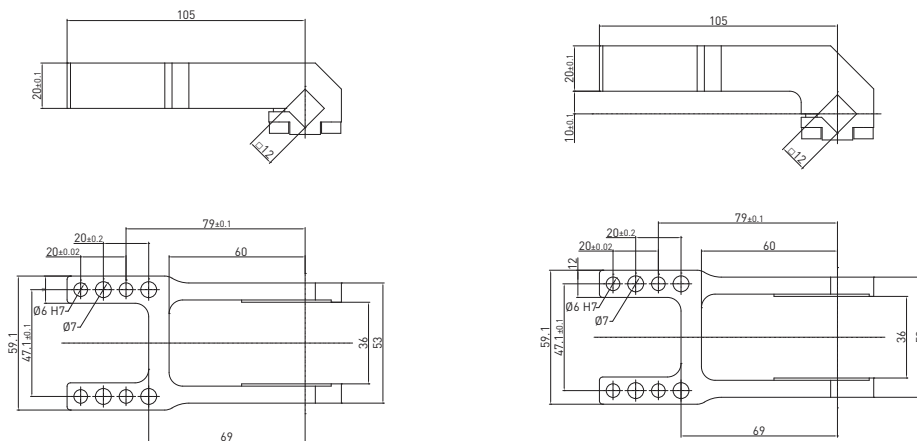
### 12 mm shaft – 10 mm offset

Part no.	Material	Version	Weight (kg)	Max op. angle pos. 1	Max op. angle pos. 2	Max op. angle pos. 3	Max op. angle pos. 4
<b>B12042</b>	<b>Aluminum</b>	<b>Central</b>	<b>0.135</b>	<b>135°</b>	<b>120°</b>	<b>N/A</b>	<b>45°</b>

Screws: M5x14 Tightening torque: 5 N m / 3.68 lb ft

## Clamping arms / 12 mm shaft for clamps' size 25 mm and size 32 mm mm - Left & right clamping surfaces

REV. 00 - 12/04/2017



### 12 mm shaft – 0 mm offset

Part no.	Material	Version	Weight (kg)	Max op. angle pos. 1	Max op. angle pos. 2	Max op. angle pos. 3	Max op. angle pos. 4
<b>B1213</b>	<b>Aluminum</b>	<b>H</b>	<b>0.163</b>	<b>135°</b>	<b>115°</b>	<b>N/A</b>	<b>45°</b>

Screws: M5x14 Tightening torque: 5 N m / 3.68 lb ft

### 12 mm shaft – 10 mm offset

Part no.	Material	Version	Weight (kg)	Max op. angle pos. 1	Max op. angle pos. 2	Max op. angle pos. 3	Max op. angle pos. 4
<b>B1214</b>	<b>Aluminum</b>	<b>H</b>	<b>0.173</b>	<b>135°</b>	<b>115°</b>	<b>N/A</b>	<b>45°</b>

Screws: M5x14 Tightening torque: 5 N m / 3.68 lb ft