

# HC-Series



## Hydraulic clamps

Hydraulic power clamps with **fully-enclosed mechanism**. Maximum mechanical advantage and compact dimensions. Heavy-duty sealed clamps provide superior clamping forces in **harsh welding environments**. Efficient and consistent for repetitive production operations. Sturdy toggle-linkage mechanism and industry-proven position monitoring: the sensor detects the actual linkage condition. **High performance and maintenance-free bushings**.

### Technical features

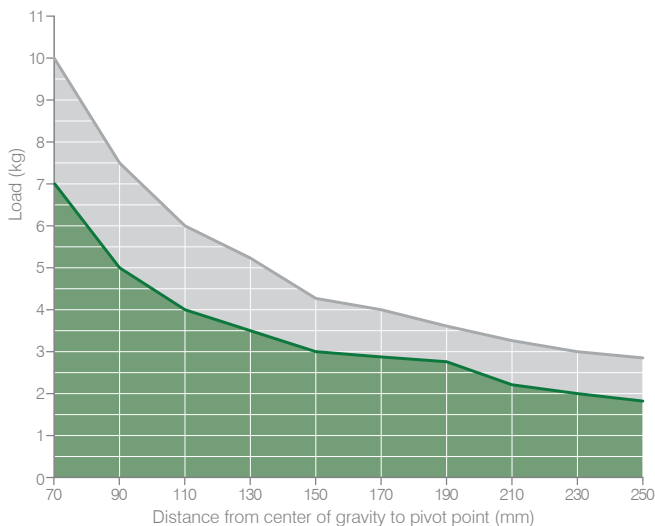
90° opening angle

Operating features

<b>Operating pressure</b>	Nominal pressure 75 bar; max pressure 150 bar
<b>Fluid temperature</b>	-20 °C ÷ + 80°C
<b>Fluid</b>	Hydraulic mineral oil
<b>Weight</b>	5,5 Kg

### Functional charts

#### • Tooling weight chart



#### • Clamping moment 580 N m at 75 bar





The above data are meant for correct working conditions of the clamp with the same performance level during its life time. For applications which exceed the above data, please contact our sales representatives.

Make sure that the opening movement is cushioned through flow adjusters.

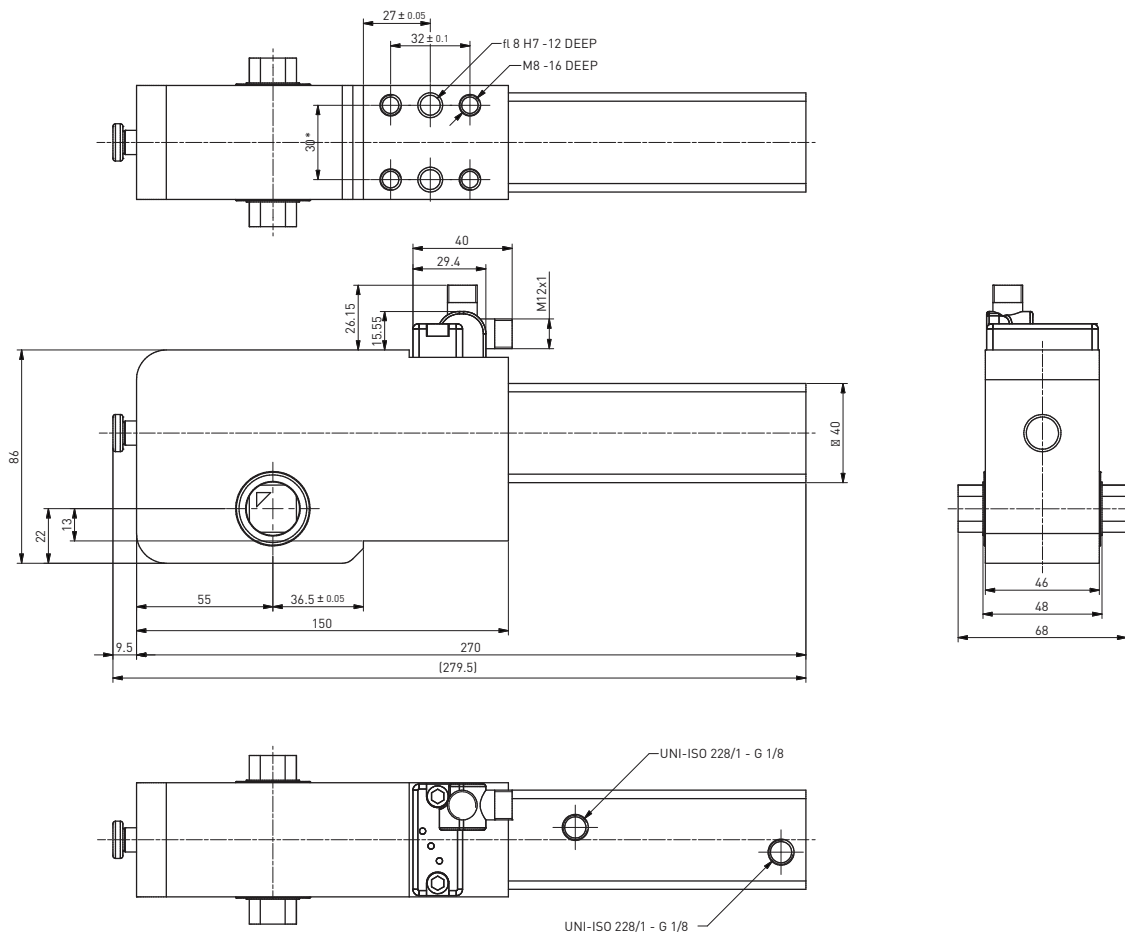
HC-Series / Ordering string

Hydraulic Power Clamps

**HC 1 A G 1 S 01**

<b>HC</b>	<b>VERSION</b>	<b>HC</b> = hydraulic clamp
<b>1</b>	<b>SIZE</b>	<b>1</b> = Ø25 mm bore; 19 mm arm shaft
<b>A</b>	<b>SENSOR</b>	<b>E</b> = electronic sensor with M12 swivel connector - PNP <b>A</b> = electronic sensor with M12 swivel connector - NPN <b>N</b> = no sensor <b>B</b> = electronic sensor with M8 swivel connector - PNP
<b>G</b>	<b>PORTS</b>	<b>G</b> = G thread – BSPP
<b>1</b>	<b>ARM MOUNT</b>	<b>1</b> =  <b>2</b> =  <b>3</b> =  <b>4</b> = 
<b>S</b>	<b>ARM MATERIAL</b>	<b>S</b> = steel
<b>01</b>	<b>CLAMP ARM TYPE</b>	<b>01</b> = wishbone, central, 15 mm offset <b>04</b> = wishbone, central, 45 mm offset <b>02</b> = wishbone, right, 15 mm offset <b>05</b> = wishbone, right, 45 mm offset <b>03</b> = wishbone, left, 15 mm offset <b>06</b> = wishbone, left, 45 mm offset

**HC1** / International mount - 25 mm bore



REV. 00 - 15/06/2021