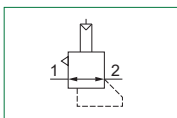


► Piloted pressure regulators



- Diaphragm piloted pressure regulator
- Available in 3 sizes with flow rates up to 3500 NI/min and connections from 1/4" a 1"
- Atex certification (II 2GD o II 3GD) on request



Note
Always regulate the rising pressure.

Technical characteristics	Size		
	Size 2	Size 3	Size 4
Body and connections type	Aluminium body, integrated aluminium connections		
IN / OUT connections	G1/4" - G3/8"	G3/8" - G1/2"	G1"
Assembly configuration	Stand alone Panel mounted with M5 screws	Stand alone Panel mounted with M5 screws	Stand alone Panel mounted with M8 screws
Assembly position	Indifferent		
Pressure range (bar)	0,5 ÷ 10		
Regulation	Pneumatic piloting		
Pressure measurement	G1/8" Pressure gauge connection port		
Max. fittings torque IN / OUT connections	G1/4" metal: 20 G3/8" metal: 25	G3/8" metal: 25 G1/2" metal: 30	G1" metal: 35

Operational characteristics	Size		
	Size 2	Size 3	Size 4
Maximum working pressure (bar)	13		
Minimum working pressure (bar)	0,5		
Pilot pressure range (bar)	0,5 ÷ 10		
Working temperature (°C)	-5 ÷ +50		

Weights	Size		
	Size 2	Size 3	Size 4
Aluminium body version (g)	313	510	1638

2
AIR TREATMENT

Order codes

17 **302A** . P . **L**

Size, body and connections

202A : Aluminium body, connections G1/4" (only for size 2)
202B : Aluminium body, connections G3/8" (only for size 2)
302A : Aluminium body, connections G3/8" (only for size 3)
302B : Aluminium body, connections G1/2" (only for size 3)
402NB : Aluminium body, connections G1" (only for size 4)

Options

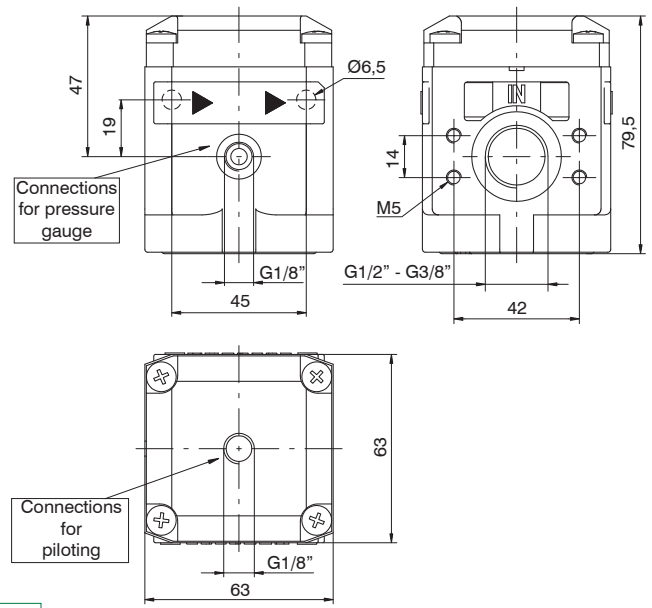
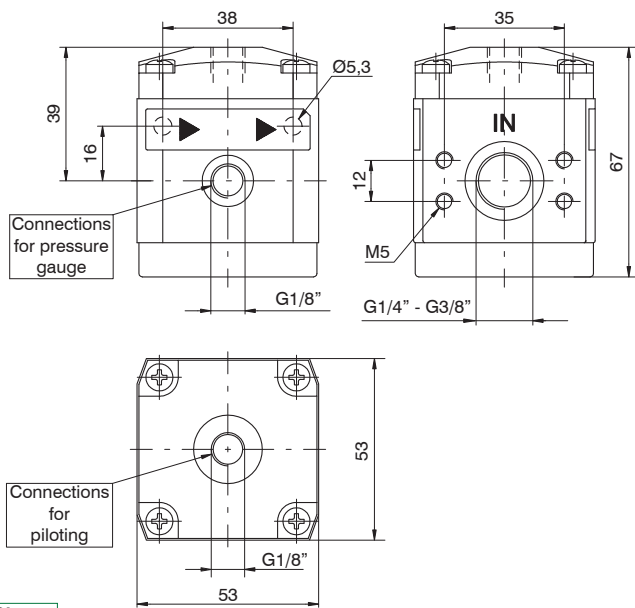
: Standard
L : Without relieving (not available for Size 4)

Example: 17302A.PL

Size 3 piloted pressure regulator, aluminium body, G3/8" connections, without relieving

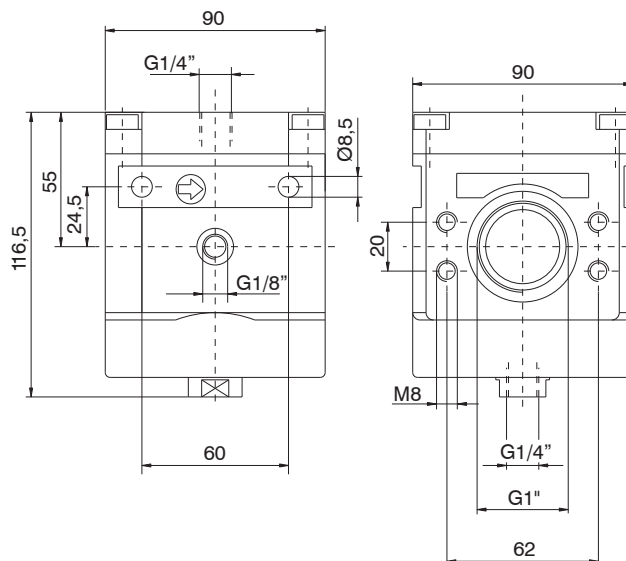
2 AIR TREATMENT

Dimensions



Size 2

Size 3

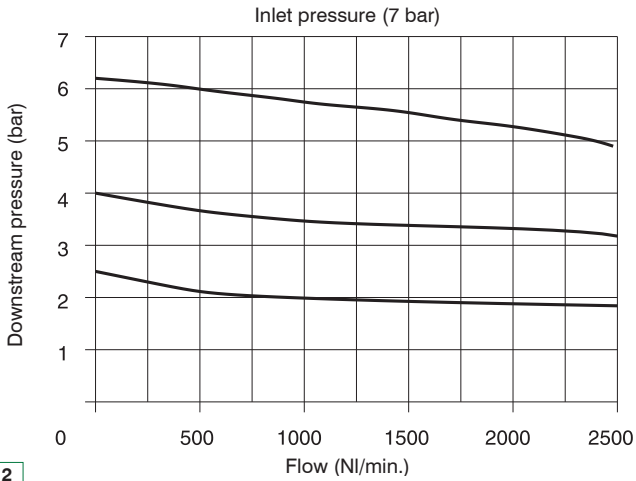


Size 4



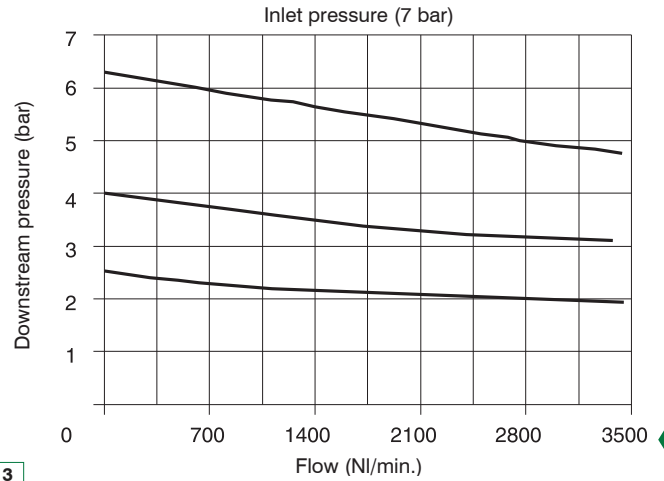
Characteristic curves

Flow rate curves



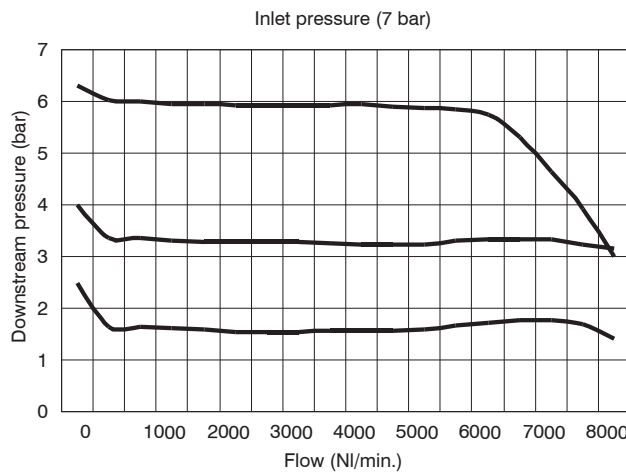
Size 2

Flow rate curves



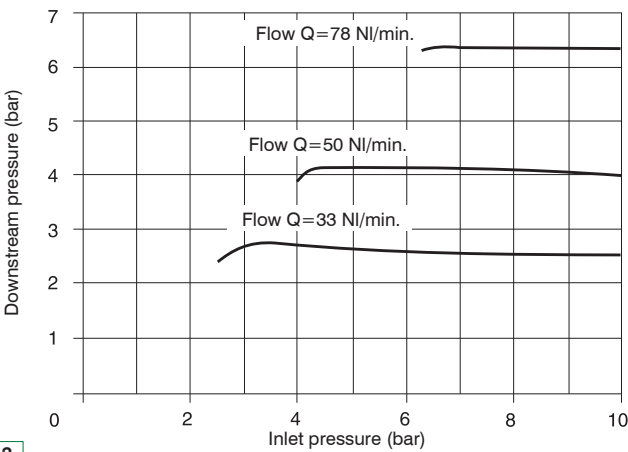
Size 3

Flow rate curves



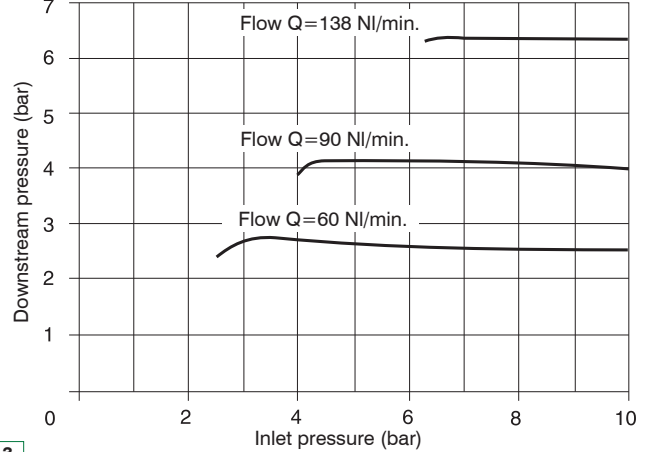
Size 4

Adjustment characteristic



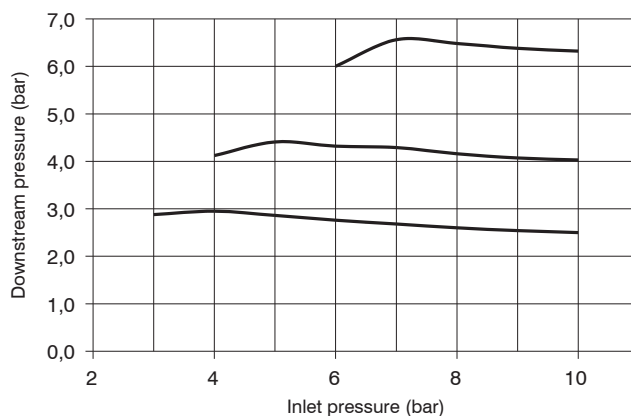
Size 2

Adjustment characteristic



Size 3

Adjustment characteristic



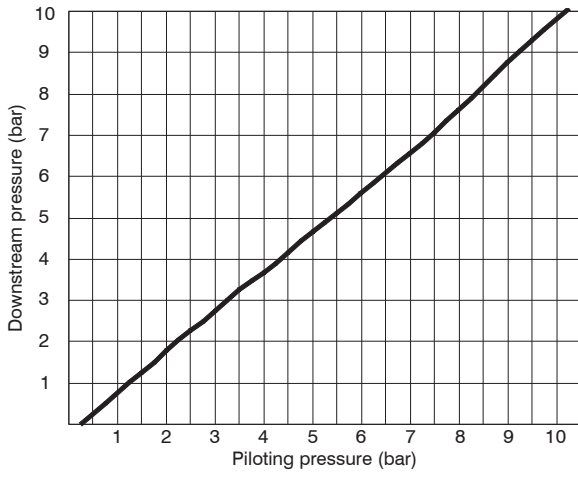
Size 4

2

AIR TREATMENT

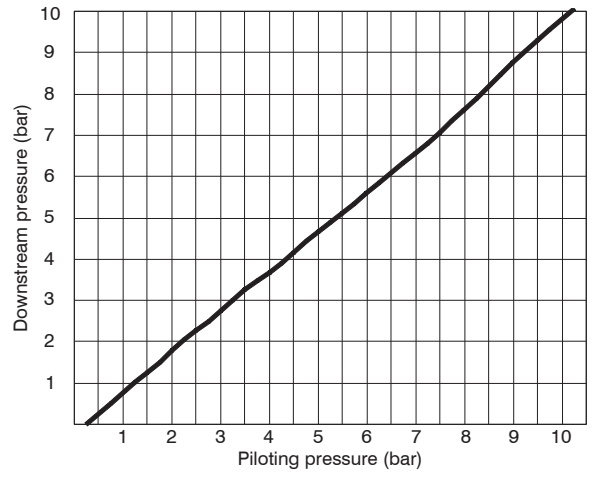


Curve di pilotaggio



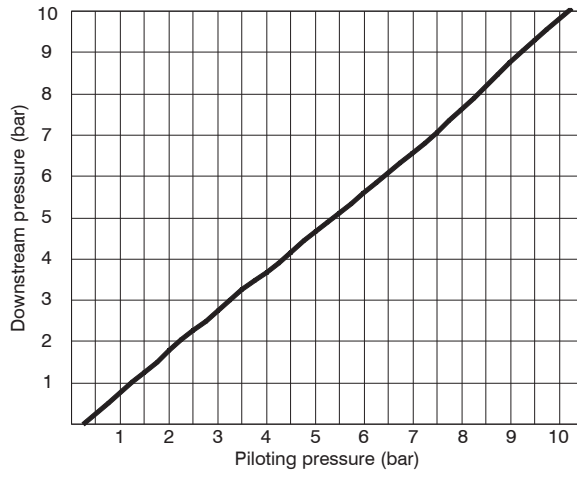
Size 2

Curve di pilotaggio



Size 3

Curve di pilotaggio



Size 4