

Ultra High Purity Compact Panel

Manifolds/Changeover Regulators

Specifications

For other materials or modifications, please consult TESCOM.

REGULATOR

Maximum Inlet Pressure

1000 or 3480 psig / 69.0 or 240 bar

Outlet Pressure Range

145, 247 psig / 10.0, 17.0 bar maximum

Body Material

316L Stainless Steel

Regulator Seat

PCTFE

Valve Seat

Ceramic on Stainless Steel

Remaining Parts

316 Stainless Steel

Flow Capacity

< 9 Nm³/h at C_v = 0.06 trim

Leak Rate

1x10⁻⁸ mbar l/s He

Operating Temperature

-40°F to 140°F / -40°C to 60°C



TESCOM Ultra High Purity Compact Panel is a VCR® compatible central gas supply unit for pressure control of high grade analytical gases in laboratory facilities. Depending on the requirements, these units switch over to a spare cylinder in order to enable an uninterrupted gas supply. The use of contact gauges allows the monitoring of empty gas cylinders, in combination with an annunciator.

GAUGES

Material

Stainless Steel

Connection

1/4" HPIC (VCR® compatible internal connection)

RELIEF VALVE

Outlet Connection

6 mm Compression fitting

Body Material

Stainless Steel 1.4404

Seat Material

Viton®

CONTACT GAUGES 2.5"

Material

Stainless Steel

Scale Range

2900 or 4570 psig / 200 or 315 bar (other ranges on request)

Switch

Reed switch, opens with decreasing pressure

Surge Current

1 A

Permanent Current

0.6 A

Power

30 Watt, 50 VA

Cable

3 wire, 2 m length

OTHERS

Weight

Single Cylinder Panel: 8.2 lbs / 3.7 kg

Automatic Changeover Panel: 18.5 lbs / 8.4 kg

Hastelloy® is a registered trademark of Haynes International.

VCR® is a registered trademark of Swagelok.

Viton® and Vespel® are registered trademarks of E.I. du Pont de Nemours and Company.

Application

- Central gas supply for the distribution of gases in laboratory applications

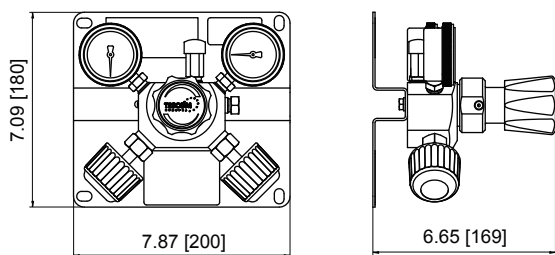
Advantages

- VCR® technology for high purity application
- Automatic changeover for continuous gas supply
- Integrated purge and shut-off valve for fast purging
- Optional Hastelloy® trim and positive seal for corrosive media
- Field-proven TESCOM 64 Series regulator design

Ultra High Purity Compact Panel Drawing

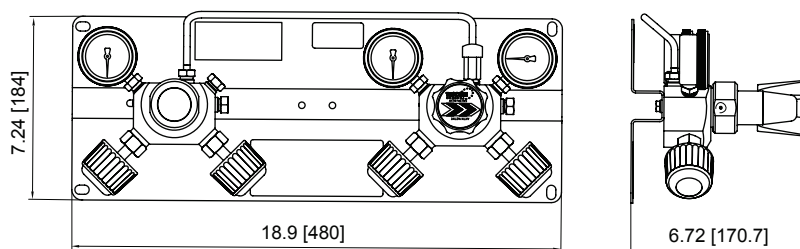
CYLINDER PANEL STAINLESS STEEL AUTOMATIC CHANGEOVER SYSTEM

SINGLE CYLINDER PANEL

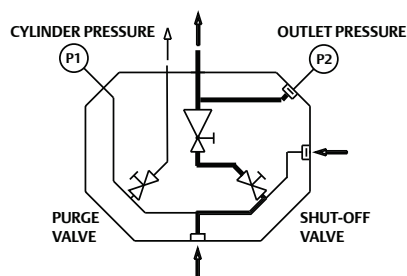


All dimensions are reference & nominal
Metric [millimeter] equivalents are in brackets

AUTOMATIC CHANGEOVER PANEL

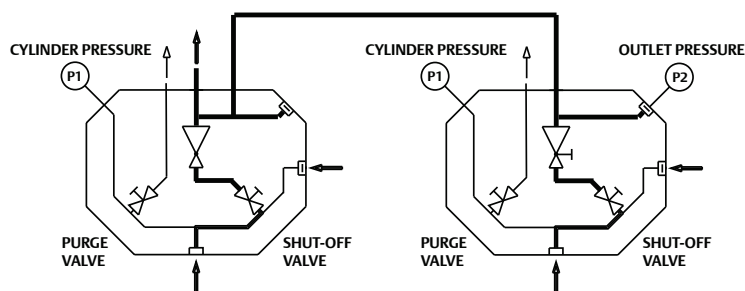


FUNCTIONAL DIAGRAM SINGLE CYLINDER PANEL



OPEN AND CLOSE VALVES SLOWLY

FUNCTIONAL DIAGRAM AUTOMATIC CHANGEOVER PANEL



OPEN AND CLOSE VALVES SLOWLY

Ultra High Purity Compact Panel Part Number Selector

Repair Kits, Accessories & Modifications may be available for this product. Please contact TESCOM for more information.

Example for selecting a part number:

D45429 - SM - S - 2 - XXX

TYPE	GAUGES	VALVE UNIT	OUTLET PRESSURE	OPTIONS (PLEASE CONSULT FACTORY)
D45429 – Single Cylinder Panel	SM – Standard gauges KM – Contact gauges	S – Untied P – Positive Seal	1 – 145 psig / 10.0 bar 2 – 247 psig / 17.0 bar	<ul style="list-style-type: none"> • $C_v = 0.15$ or $C_v = 0.24$ • Inlet filter • Vespel® regulator seat • Pigtail with cylinder connector
D45450 – Automatic Changeover Panel				

Standard Features:

Stainless Steel mounting plate, regulator with integrated valves, inlet/outlet pressure gauges and relief valve.
All connections 1/4" HPIC.