

## 2/2 WAY DIRECT ACTING SOLENOID VALVE, G 1/8" - G 1/4"

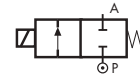
### COMMON FEATURES

- Body material: brass (CW617N EN 12165)
- Orifice material: stainless steel (1.4305 EN 10088/AISI 303)
- Operator material: stainless steel
- Protection class: IP 65 (with connector and gasket)

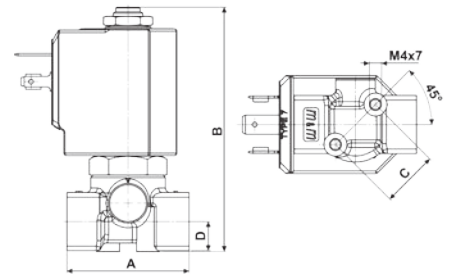
### OPTIONS

- Available with body thread connection 1/8" (e.g. code D262DVH), performance ratings remain the same as D263DVH.
- Manual override (e.g. code D262DVC $\overline{M}$ ).

### TYPE: D262/263



Normally Closed



Flow direction overseat 1 → 2

DIMENSIONS & WEIGHTS		D262	D263
<b>G connection</b>	[ISO 228]	1/8"	1/4"
<b>A</b>	[mm]	40	40
<b>B</b>	[mm]	77.5	77.5
<b>C</b>	[mm]	18.5	18.5
<b>D</b>	[mm]	9.5	9.5
<b>weight</b>	[kg]	0.26	0.26

### GENERAL PURPOSE

VALVE	nominal $\varnothing$	flow rate Kvs	OPD			COILS	
			min.	max. AC	max. DC	code	[Volts/Hz]
code	[mm]	[l/min]	[barg]	[barg]	[barg]	code	[Volts/Hz]
D263DVA	1.0	0.5	0	30	30	7250	24v DC
D263DVC	1.5	1.3	0	24	24	7200	24v 50/60Hz
D263DVG	2.5	3.4	0	18	16	7400	110v 50Hz - 120v 60Hz
D263DVH	3.0	4.5	0	15	10	7600	200v 50Hz - 220v 60Hz
D263DVL <sup>①</sup>	4.0	6.0	0	10	5	7700	230v 50Hz - 240v 60Hz
D263DVN <sup>①</sup>	5.0	7.5	0	5	2,5		
D263DVP <sup>①</sup>	6.0	8.0	0	3	1		

<sup>①</sup> Manual override not available for orifice >  $\varnothing$  3 mm

### D262/263 - FKM seal, NC -

- Media: water, oil, air
- Media temperature: -10°C ÷ +130°C
- Ambient temperature: -10°C ÷ +50°C
- Seal material: foodgrade FKM
- Coil power: AC 18va (holding)  
AC 36va (inrush)  
DC 14w

### OPTIONS

- EPDM seal, temperature max. 120°C (e.g. code D262DEH)
- For vacuum see page 36
- ATEX version see page 37

### STEAM

VALVE	nominal $\varnothing$	flow rate Kvs	OPD			COILS class 'H' only	
			min.	max. AC	max. DC	code	[Volts/Hz]
code	[mm]	[l/min]	[barg]	[barg]	[barg]	code	[Volts/Hz]
D263DLA	1.0	0.5	0	9	9	7251	24v DC
D263DLC	1.5	1.3	0	9	9	7201	24v 50/60Hz
D263DLG	2.5	3.4	0	9	8	7401	110v 50Hz - 120v 60Hz
D263DLH	3.0	4.5	0	9	5	7601	200v 50Hz - 220v 60Hz
						7701	230v 50Hz - 240v 60Hz

### D262/263 - FILLED PTFE seal, NC -

- Media: steam
- Media temperature: -10°C ÷ +180°C
- Ambient temperature: -10°C ÷ +70°C
- Seal material: Sigodur (filled PTFE)
- Coil power: AC 18va (holding)  
AC 36va (inrush)  
DC 14w

### NOTES

- Seamless tube as standard

### HIGH PRESSURE

VALVE	nominal $\varnothing$	flow rate Kvs	OPD			COILS high power - class 'H' only	
			min.	max. AC	max. DC	code	[Volts/Hz]
code	[mm]	[l/min]	[barg]	[barg]	[barg]	code	[Volts/Hz]
D263DRB1	1.2	0.7	0	200	60	72Z1	24v DC
D263DRC1	1.5	1.3	0	200	35	72K1	24v 50/60Hz
D263DRE1	2.0	2.2	0	120	25	74K1	110v 50Hz - 120v 60Hz
D263DRH1	3.0	4.5	0	50	11	77K1	230v 50Hz - 240v 60Hz

### D262/263 - RUBY seal, NC -

- Media<sup>②</sup>: water, oil, liquids
- Media temperature: -10°C ÷ +130°C
- Ambient temperature: -10°C ÷ +50°C
- Seal material: Ruby
- Coil power: AC 25va (holding)  
AC 50va (inrush)  
DC 22w

### NOTES

- Seamless tube as standard

<sup>②</sup> Not 100% leak-proof when used with air/gases. Approximate leak rate is 1,5 ml/min at max. OPD.

**ATTENTION:** When high pressure valves are supplied without a coil, their nameplates display the max. OPD of the valve when equipped with an AC (25va) and DC (22w) coil (as shown in the table above).  
When using alternative coil power ratings please ensure to request separately the appropriate nameplate at time of order.

## 2/2 WAY DIRECT ACTING SOLENOID VALVE, G 1/8" - G 1/4"

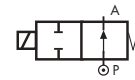
### COMMON FEATURES

Body material: brass (CW617N EN 12165)  
 Orifice material: stainless steel (1.4305 EN 10088/AISI 303)  
 Operator material: stainless steel  
 Protection class: IP 65 (with connector and gasket)

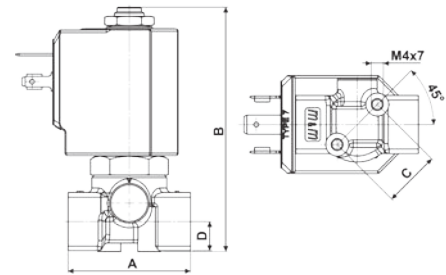
### OPTIONS

Available with body thread connection 1/8" (e.g. code RD262DVA), performance ratings remain the same as RD263DVA.  
 For steam version with filled PTFE seal (Sigodur) see valve model **RD236DL**- on page 17  
 For high pressure version with Ruby seal see valve model **RD236DR-1** on page 17

### TYPE: RD262/263



Normally Open



Flow direction overseat 1 → 2

DIMENSIONS & WEIGHTS		RD262	RD263
<b>G connection</b>	[ISO 228]	1/8"	1/4"
<b>A</b>	[mm]	40	40
<b>B</b>	[mm]	77.7	77.7
<b>C</b>	[mm]	18.5	18.5
<b>D</b>	[mm]	9.5	9.5
<b>weight</b>	[kg]	0.26	0.26

VALVE	nominal $\varnothing$	flow rate Kvs	OPD			COILS	
			min.	max. AC	max. DC	class 'H' only	
code	[mm]	[l/min]	[barg]	[barg]	[barg]	code	[Volts/Hz]
<b>RD263DVA</b>	1.0	0.5	0	30	30	7251	24v DC
<b>RD263DVC</b>	1.5	1.3	0	24	24	7201	24v 50/60Hz
<b>RD263DVG</b>	2.5	3.4	0	16	16	7401	110v 50Hz - 120v 60Hz
<b>RD263DVH</b>	3.0	4.5	0	10	10	7601	200v 50Hz - 220v 60Hz
						7701	230v 50Hz - 240v 60Hz

### RD262/263 - FKM seal, NO -

Media: water, oil, air  
 Media temperature:  $-10^{\circ}\text{C} \div +130^{\circ}\text{C}$   
 Ambient temperature:  $-10^{\circ}\text{C} \div +50^{\circ}\text{C}$   
 Seal material: foodgrade FKM  
 Coil power: AC 18v<sub>A</sub> (holding)  
 AC 36v<sub>A</sub> (inrush)  
 DC 14w

### OPTIONS

EPDM seal, temperature max. 120°C (e.g. code RD262DEH)

GENERAL PURPOSE

