

# Maintenance / Repair Instructions for Pinch Valves

## Series OV type M (handwheel)



### DN 15-50

#### Step 1a:

Remove the sleeve fixing screw (18) from the lower body half (03).

### DN 15-250

#### Step 1b:

Unscrew the body half screws (16) of the body halves (02-03). Remove the handwheel (14) by loosening the lock nut. Then separate the two body halves (02-03).

#### Step 2:

Unscrew the sleeve fixing screws (17) and remove the sleeve (04).

#### Step 3:

Replace the sleeve (04) and mount the sleeve fixing screws (17).

#### Step 4:

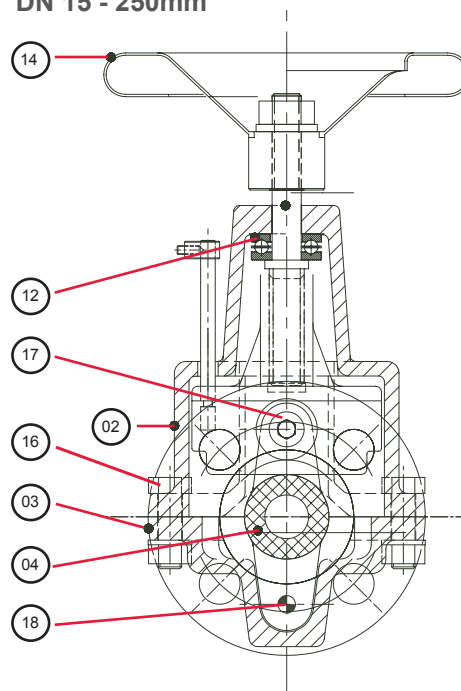
Position the sleeve (04) within the valve body (02-03), lock body half screws (16) and secure the handwheel (14).

### PERFORMANCE TEST:

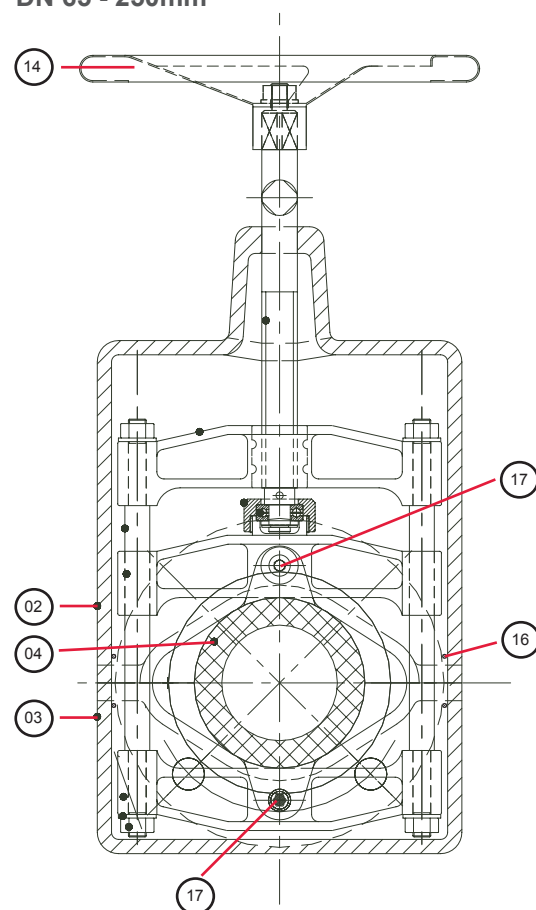
Operate the valve several times and check for easy running closing and opening.

Code	Description	Quantity DN15-50	Quantity DN 65-250
02	Upper body half	1	1
03	Lower body half	1	1
04	Sleeve	1	1
14	Handwheel	1	1
16	Body half screws	4	4
17	Sleeve fixing screws	2	4
18	Lower Sleeve fixing screw	1	0

DN 15 - 250mm



DN 65 - 250mm



<http://www.pinch-valve.com/videos/ov-dn15-50-type-m.html>  
<http://www.pinch-valve.com/videos/ov-dn65-250-type-m.html>

Technical details subject to change without notice.

### AKO Armaturen & Separationstechnik GmbH

D-65468 Trebur-Astheim • Adam-Opel-Str. 5 • Phone: +49 (0) 61 47-9159-0 • Fax: +49 (0) 61 47-9159-59  
 E-Mail: [ako@ako-armaturen.de](mailto:ako@ako-armaturen.de) • Web: [www.pinch-valve.com](http://www.pinch-valve.com)

# Maintenance / Repair Instructions for Pinch Valves

## Series OV type P-PA (with one pneumatic cylinder)



### Type P

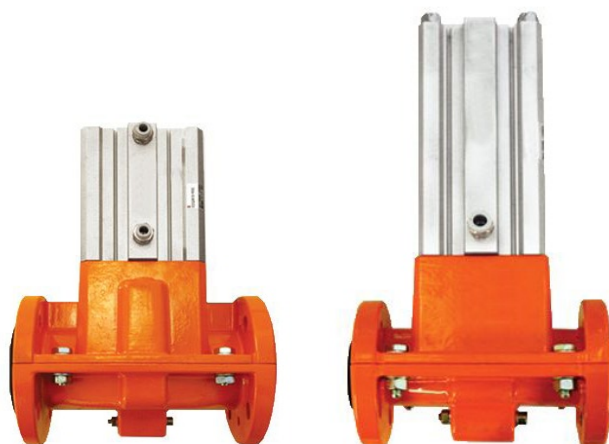
**Step 1:** Remove the sleeve fixing screw (18) from the lower body half (03).

**Step 2:** Remove the screws (16) of the body valve (02). Introduce air (to close the valve) into the cylinder (15).

**Step 3:** Unscrew the sleeve fixing screws (17) and remove the sleeve (04).

**Step 4:** Replace the sleeve (04), mount the sleeve fixing screws (17).

**Step 5:** Supply the cylinder (15) with air (to open the valve) and mount the body half screws (16). Mount the sleeve fixing screw (18) into the lower body half (03). Check the functionality of the valve by opening and closing it.



### Type PA

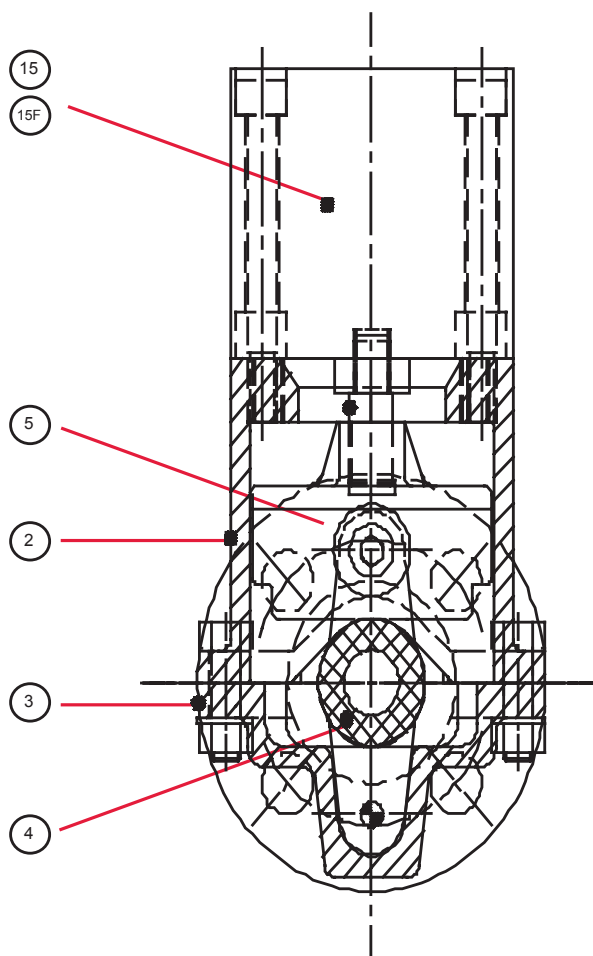
**Step 1:** Remove the sleeve fixing screw (18) from the lower body half (03).

**Step 2:** Remove the screws (16) of the body valve (02). Introduce air into the cylinder (15F).

**Step 3:** Unscrew the sleeve fixing screws (17) and remove the sleeve (04).

**Step 4:** Replace the sleeve (04), mount the sleeve fixing screws (17).

**Step 5:** Supply the cylinder (15F) with air and mount the body half screws (16). Mount the sleeve fixing screw (18) into the lower body half (03). Check the functionality of the valve by opening and closing it.



P-PA: DN 15 - 50mm

Code	Description	Quantity DN 15-50
02	Upper body half	1
03	Lower body half	1
04	Sleeve	1
05	Sleeve compressor	1
15	Cylinder double acting	1
15F	Cylinder single acting (spring closed)	1

Technical details subject to change without notice.



[www.pinch-valve.com/videos.html](http://www.pinch-valve.com/videos.html)

**AKO Armaturen & Separationstechnik GmbH**

D-65468 Trebur-Astheim • Adam-Opel-Str. 5 • Phone: +49 (0) 61 47-9159-0 • Fax: +49 (0) 61 47-9159-59

E-Mail: [ako@ako-armaturen.de](mailto:ako@ako-armaturen.de) • Web: [www.pinch-valve.com](http://www.pinch-valve.com)

# Maintenance / Repair Instructions for Pinch Valves

## Series OV type P2-PA2 (with two pneumatic cylinders)



### Type P2

**Step 1:** Remove the body half screws (16) of the body halves (02).

**Step 2:** Remove the guide traverse (08) by loosening the guide traverse nuts (19). Supply air to the cylinder (15) to close the valve.

**Step 3:** Turn right to unscrew the ring nuts (09) of the pinch bar (05). Unscrew the sleeve fixing screws (17) and remove the sleeve (04).

**Step 4:** Replace the sleeve (04) and mount the sleeve fixing screws (17). Turn left to fix the ring nuts (09) of the pinch bar (05).

**Step 5:** Supply air to the cylinder (15) to open the valve and fix the body half screws and nuts (16). Insert the guide traverse (08) back into the body halves (02), center it and block the four nuts (19).

Operate the valve several times and check for easy running closing and opening.

### Type PA2

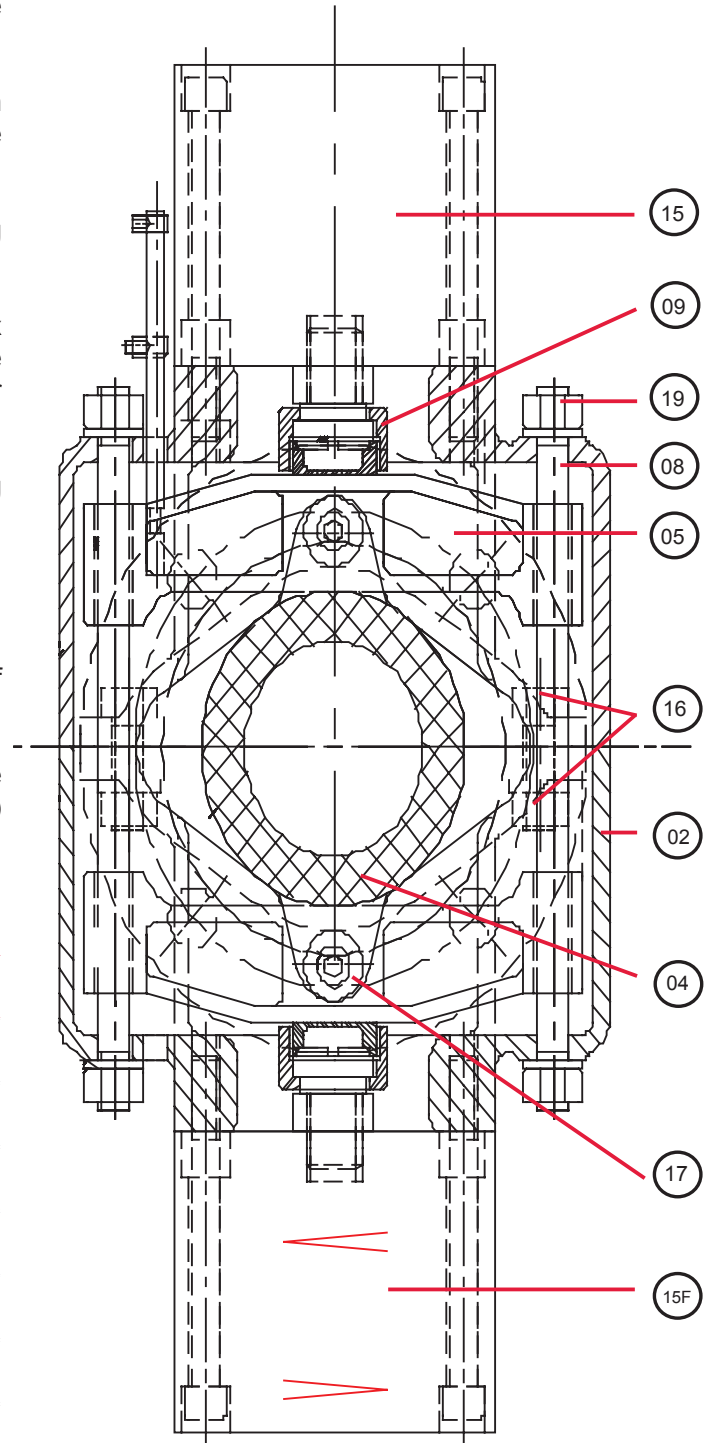
**Step 1:** Supply air to the cylinder (15F). Remove the body half screws (16) of the body halves (02).

**Step 2:** Then remove the guide traverse (8) by loosening the guide traverse nuts (19). Remove the air from the cylinder (15F) to close the valve.

**Step 3-5:** see type P2

Code	Description	Quantity
02	Body half	2
04	Sleeve	1
05	pinch bar	2
09	Ring nut (left-hand thread)	2
08	Guide traverse	2
15	Cylinder double acting	2
15F	Cylinder single acting (spring closed)	2
16	Body half screws	4
17	Sleeve fixing screws	4
19	Guide traverse nuts	4

**P2: DN 65 - 250mm**  
with two double acting cylinders



**PA2: DN 65 - 200mm,**  
with two single acting cylinders.  
The valve is spring closed.

Technical details subject to change without notice.



[www.pinch-valve.com/videos.html](http://www.pinch-valve.com/videos.html)

**AKO Armaturen & Separationstechnik GmbH**

D-65468 Trebur-Astheim • Adam-Opel-Str. 5 • Phone: +49 (0) 61 47-9159-0 • Fax: +49 (0) 61 47-9159-59

E-Mail: [ako@ako-armaturen.de](mailto:ako@ako-armaturen.de) • Web: [www.pinch-valve.com](http://www.pinch-valve.com)