

# 2-PCS BALL VALVE WITH ISO TOP FLANGE

**TYPE E7249: STEEL**  
**TYPE E7289: STAINLESS STEEL**



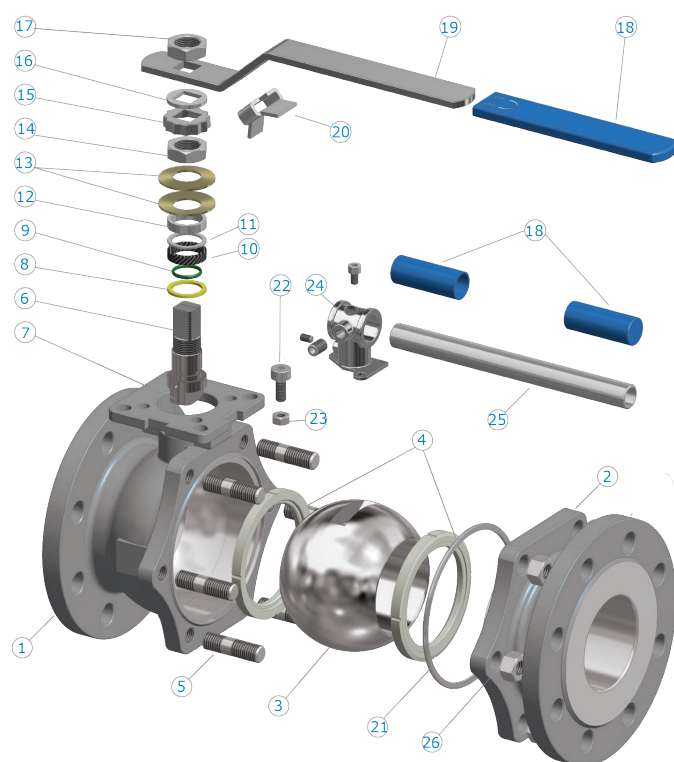
**econ®**

## GENERAL

DIMENSION - PN40 VERSION:	DN15 - DN125
DIMENSION - PN16 VERSION:	DN65 - DN150
FLANGES:	EN1092-1
FACE-TO-FACE:	EN558:2008 SERIES 27
TOP FLANGES:	ISO 5211
BALL HARDENING:	300HV
TEMPERATURE:	-29°C TO 200°C (STAINLESS STEEL) -10°C TO 200°C (STEEL)

## OPTIONS

FLANGES:	ANSI 150, ANSI 300
SEAT/PACKINGS:	VARIOUS MATERIALS
DIMENSIONS:	DN 200
MATERIAL O-RING:	KALREZ® 6375
BALL HARDENING:	1200HV +/- 100HV



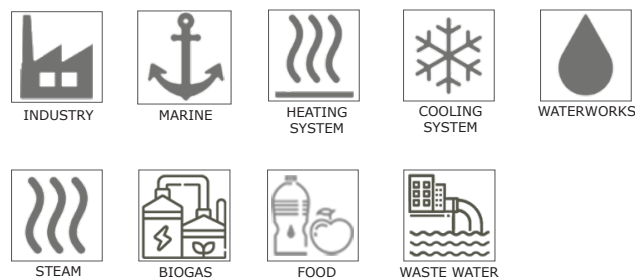
POS	DESCRIPTION	MATERIAL (SS/WCB)
1	BODY	1.4408 / 1.0619
2	CONNECTION	1.4408 / 1.0619
3	BALL	1.4308 / 1.0619
4	SEAT	PTFE TFM 1600
5	STUD	1.4301 (A 193-B8) / 1.7225 (A 193-B7)
6	STEM	1.4401 / 1.4301
7	ANTI-STATIC DEVICE	1.4401 / 1.4301
8	THRUST WASHER SEAL	PTFE
9	O-RING	FPM
10	GLAND PACKING	GRAFOIL
11	BUSHING	1.4301
12	GLAND	1.4401
13	BELLEVILLE WASHER	1.4310
14	NUT	1.4301 (A 194-8)
15	LOCKING CAP	1.4301
16	RING	1.4301
17	NUT	1.4301 (A 194-8)
18	SLEEVE	VINYL
19	HAND LEVER	1.4301
20	LOCKING DEVICE	1.4301
21	BODY GASKET	LEADER® SPIRAL WOUND GRAPHITE/ PTFE
22	SOCKET HEAD SCREW	1.4301 (A 193-B8)
23	NUT	1.4301 (A 193-8)
24	T-HANDLE SUPPORT	1.4308
25	T-HANDLE*	ZINC PLATED STEEL
26	NUT	1.4301 (A 194-8) / 1.0503 (A 194-2H)

\*\*) DN100 - DN150

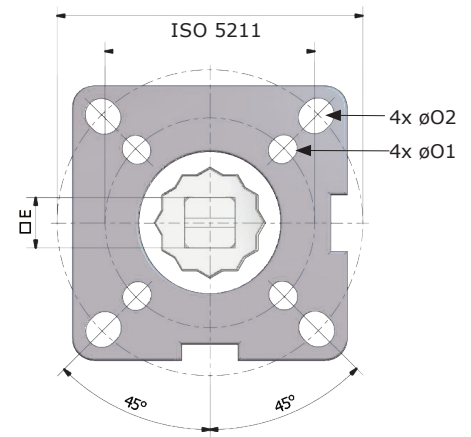
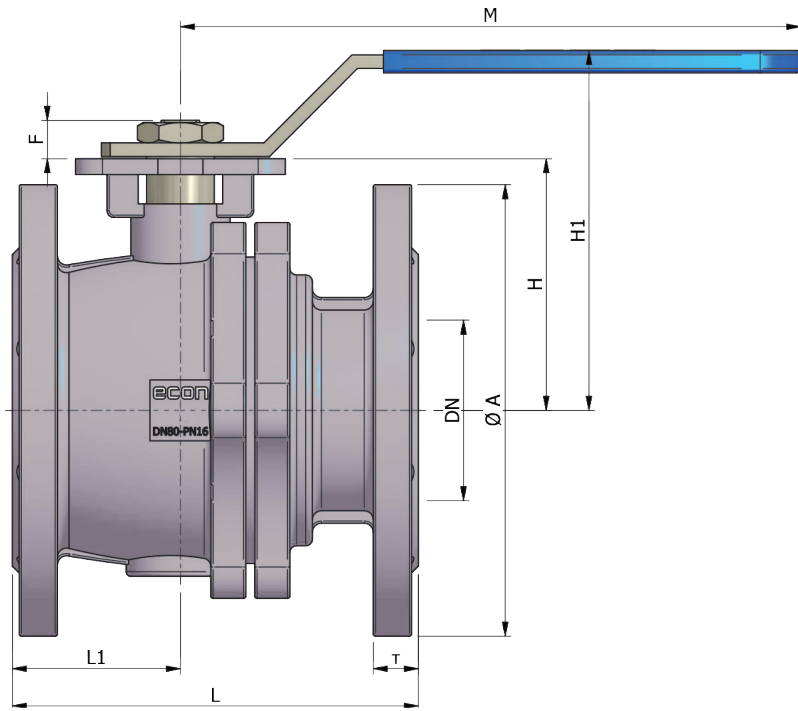
## DESCRIPTION

- Material certificate** EN 10204 3.1 on all ball valves. Approved for Atex area (Group II, equipment category 2).
- Maintenance free seal ring** with belleville spring washers, V-rings and O-ring, providing optimum sealing capabilities - even at changing temperatures.
- The valve has as standard the following approvals:**  
Fire Safe acc. API 607 6th edition, TA-Luft, ATEX 94/9 / EC (Ex II 2 GD Ec-c II), SIL 2, EC1935, FDA.

## SUITABLE FOR



## DIMENSIONS

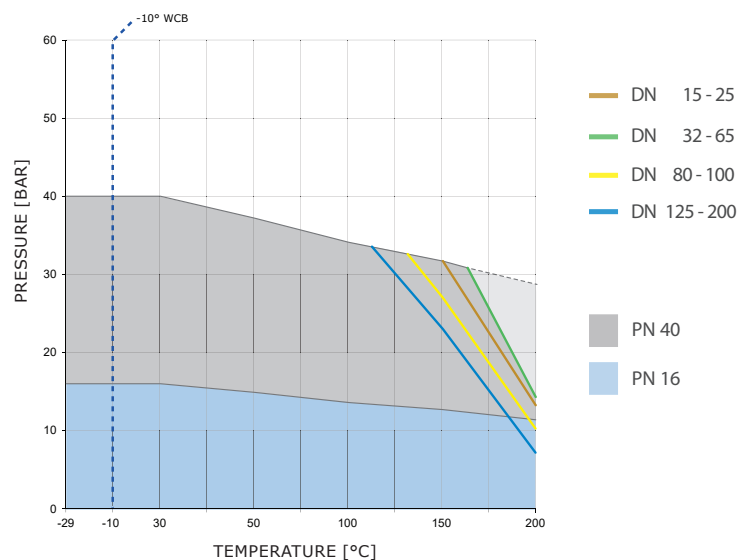


DIM	VALVE WITH HANDLE							ISO TOP FLANGE				WEIGHT [KG]	PRES-SURE
	øA	T	F	H	H1	L	L1	M	øO1/øO2	ISO 5211	□E		
15	95	16	9	48	78	115	50	145	6/6	F03/F04	9	2.4	PN 40
20	105	18	9	53	84	120	54	145	6/6	F03/F04	9	3.2	
25	115	18	11	59	90	125	56	175	6/7	F04/F05	11	4.2	
32	140	18	11	71	102	130	58	175	6/7	F04/F05	11	5.5	
40	150	18	14	76	110	140	58	190	7/9	F05/F07	14	6.9	
50	165	20	14	85	118	150	63	190	7/9	F05/F07	14	9.5	
65	185	22	17	107	155	170	64	265	9/11	F07/F10	17	13.8	
80	200	24	17	117	181	180	70	300	9/11	F07/F10	17	17.7	
100	235	24	22	140	210	190	78	400	-/11	F10	22	25.2	
125	270	26	27	183	263	325	160	600	-/14	F12	27	62.5	
150	300	28	27	204	284	350	176	800	-/14	F12	27	73.8	
65	185	18	17	102	150	170	69	265	9/11	F07/F10	17	13.8	PN 16
80	200	20	17	112	176	180	75	300	9/11	F07/F10	17	17.7	
100	220	20	22	140	210	190	83	400	-/11	F10	22	25.2	
125	250	22	27	183	263	325	153	600	-/14	F12	27	60.0	
150	285	22	27	204	284	350	162	800	-/14	F12	27	71.8	

## VALVE DATA

DIM [MM]	*TORQUE [NM]	KV-VALUE [M <sup>3</sup> /H AT 1 BAR]	PRES-SURE
	BREAKAWAY TORQUE	90° OPEN	
15	6.5	15	PN 40
20	7.8	31	
25	14.3	41	
32	22.1	62	
40	29.9	103	
50	44.2	163	
65	68.9	386	
80	113.1	514	
100	170.3	943	
125	353.6	1458	
150	715.0	2228	PN16
65	61.1	386	
80	100.1	514	
100	152.1	943	
125	299.0	1458	
150	494.0	2228	

## PRESSURE/TEMPERATURE



\*Torque figures with 30 % safety factor included.  
 When dimensioning the actuator please add the following:  
 + 15% if dry air or demineralized water.  
 + 30% if sludge or abrasive medias.  
 - 15% if lubricating medias.