

Connector Maintenance:

- A daily, weekly and periodic inspection of the connector by competent person is recommended. User must establish a regular interval for maintenance as determined by the user media and operational environment.
- Inspection should include visual checks of the sealing area, handle wear, missing or loose components, leak tightness, ease of operation, sufficient lubrication, wear, dirt accumulation and damage.
- Establish a regular interval for lubrication. The media and environment will be determining factors in establishing this interval to prevent dryness and/or corrosion.
- Difficulty of operation after continual use indicates a need for lubrication or other maintenance.
- Use only original **FasTest** spare parts that are designed for the application and are subject to strict quality control. See Warranty.

Safety Warnings – Guidelines:

- If instructions are not completely understood by operator or components are missing, contact **FasTest** before attempting use of the connector.
- Application Safety: All **FasTest** products have been designed with safety in mind, however, it is the responsibility of the products users to design each process in such a way to avoid mishaps that can cause physical hazard or property loss. Secondary restraints such as safety chains, shields, cages or fixtures are all good choices depending on the application. **FasTest** can recommend or assist you in clarifying potential hazards of your application.
- **FasTest FEG** Connectors are not internally valved, and will not prevent loss of media when disconnected. Do not attempt to disconnect unless safe conditions are met.
- **FasTest FEG** Connectors must only be used with test pieces of a specific size as indicated by the part number. Improper use could cause separation of the connector from the test piece resulting in physical harm or damage.

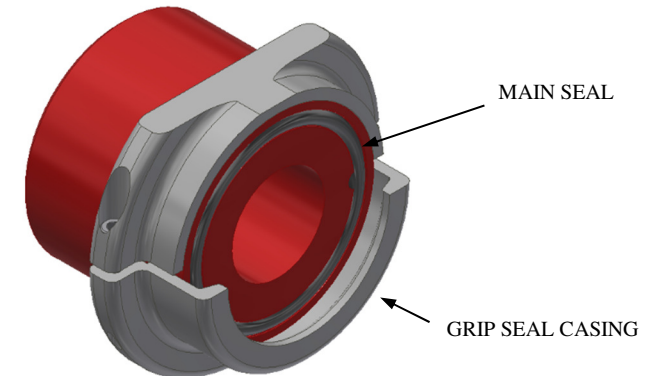
FasTest, Inc. Product Warranty

FasTest, Inc. warrants its products against defects of workmanship and/or material for 1 year from the date of the sale by FasTest, Inc. This warranty is void if the product is misused, tampered with or used in a manner that is not in accordance with FasTest, Inc. recommendations and/or instructions. FasTest, Inc. is not liable for consequential or other damages including, but not limited to, loss, damage, personal injury, or any other expense directly or indirectly arising from the use of or inability to use its products either separately or in combination with other products. ALL OTHER WARRANTIES EXPRESSED OR IMPLIED, WHETHER ORAL OR WRITTEN, INCLUDING BUT NOT LIMITED TO WARRANTIES OR MERCHANTABILITY OR FITNESS FOR A PARTICULAR PURPOSE ARE EXPRESSLY EXCLUDED.

Remedy under this warranty is limited to replacement of the product or an account credit in the amount of the original selling price, at the option of FasTest, Inc. All allegedly defective products must be returned prepaid transportation to FasTest, Inc. along with information describing the products performance, unless disposition in the field is authorized in writing by FasTest, Inc.

FEG Connectors

Description: *FEG series connectors to grip and seal ports with barbs or flanges. Also available with ICON CV04.*



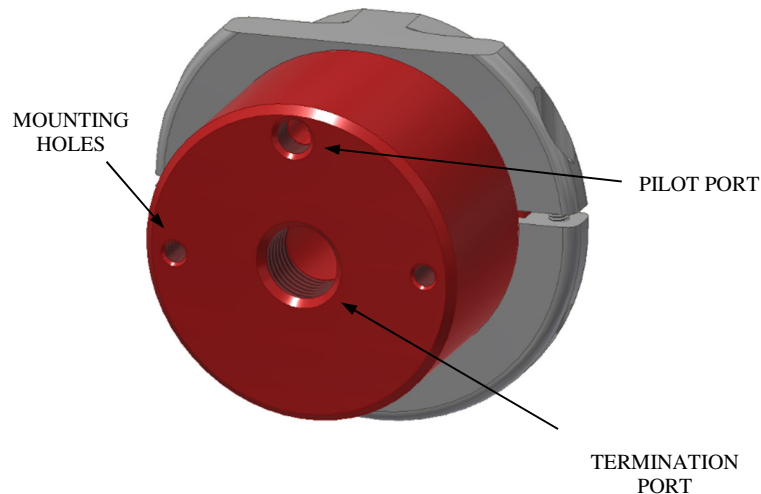
FEG Connectors provide a reliable leak-tight connection that grips and seals ports with barbs or flanges. Simply slip the seal casing over the feature to be gripped, apply pilot pressure and then apply termination pressure.

Please thoroughly read and understand these operating instructions prior to operating the connector. The use of pressurized media for sealing and testing requires a thorough understanding of the **FasTest FEG** Operating Instructions.

- Installation
- Operating Conditions
- Operation
- Main Seal Replacement
- Rebuild Instructions
- Connector Maintenance
- Safety Warnings – Guidelines

Installation:

1. Connect supply lines to the pilot and termination ports.
2. 60 to 90 psi required for pilot pressure.
3. Maximum termination pressure is case specific and will be labeled on the connector.
4. Mounting holes on all FEG sizes are 1/4-28 UNF – 2B, see product brochure for connector dimensions.

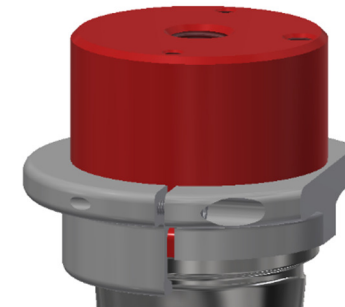
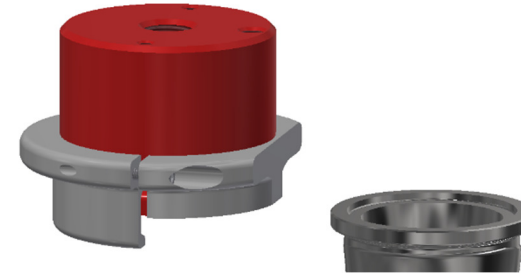


Operating Conditions:

Operation:

Connecting Action:

1. Place connector onto test piece.



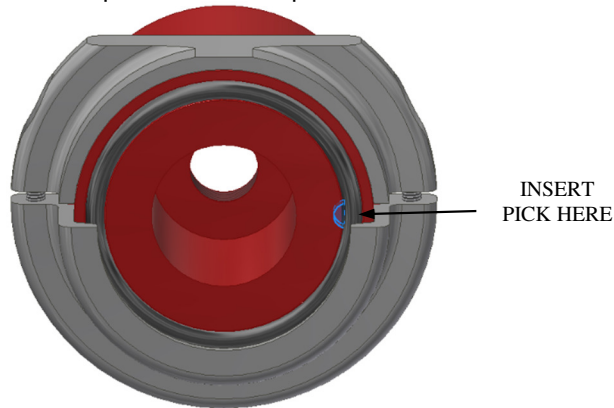
2. Activate pilot pressure to engage main seal.
3. Activate test pressure into termination port.
4. Maximum rated test pressure is marked on connector.
5. Run test.

Disconnecting Action:

1. Relieve test pressure.
2. Relieve pilot pressure, remove connector from test piece.

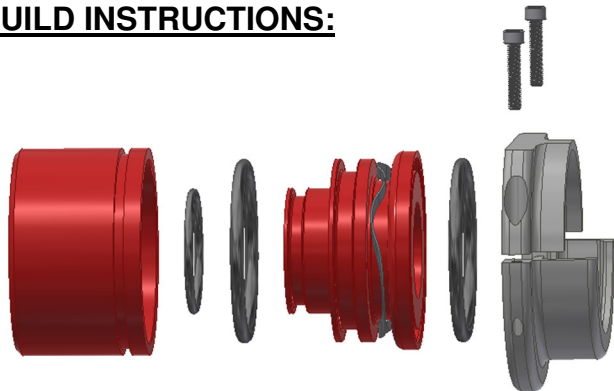
MAIN SEAL REPLACEMENT:

1. Make sure pilot and media pressure is off.



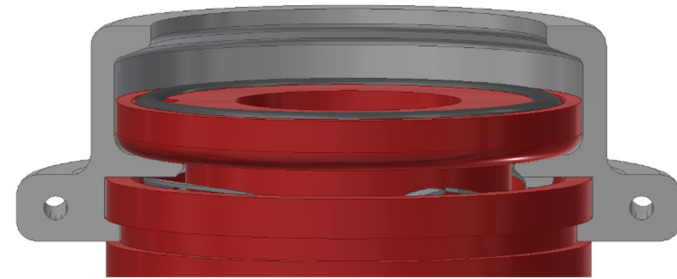
2. Insert a pick into the location highlighted in blue.
3. Remove the worn seal.
4. Press a new main seal into the groove.

REBUILD INSTRUCTIONS:



1. Remove screws from seal casing.
2. Pull both halves of seal casing off.
3. Slide piston out to replace internal seals.

4. Push piston back into housing.
5. Slide the bottom half of the seal casing onto the housing. **ENSURE THAT THE FLANGE OF THE SEAL CASING IS BETWEEN THE PISTON AND THE WAVE SPRING**



6. Slide top half of seal casing on.
7. Apply Loctite 242 to threads and tighten screws.

FEG with ICON

FEG Connectors are also available with ICON Technology. Contact factory for details and offerings.

