



VDPRV Series

Pressure Reducing Valves

Catalog No VDPRV-1
Sep. 2010



Application

- Pressure reducing valve is applied with high pressure reduction in the water and steam sampling system
- The sampling system is required with chemical analysis of water and steam samples

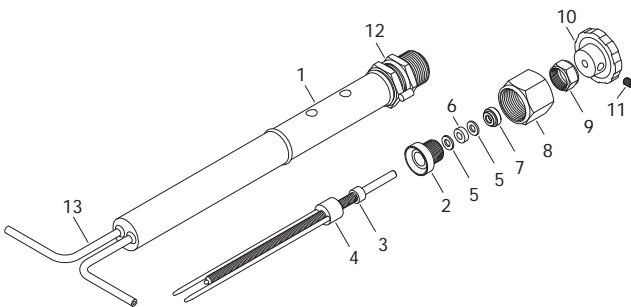
Features

- Precision flow control
- Smooth handle operating
- Accuracy pressure reducing
- Panel mounting possibility
- Pressure reducer is rod-in-tube type
- Stainless steel tapered rod

Technical Data

- Working Pressure 5,000 psig
- Temperature Range 122 to 300°F (50 to 149°C)
- Pressure Reducing Range 5 to 5,000 psig
- Flow Range 150 to 4,000 ml/min.
- End Connection Tube end O.D 1/4"x Thickness 0.065"
Socket weld 1/4" tube
37° flare 1/4"
Union elbow 1/4"

Materials of Construction



Description	Material
1. Body	ASTM A479/A276 TYPE316
2. Bonnet	ASTM A479/A276 TYPE316
3. Stem Screw	ASTM A479/A276 TYPE316
4. Stem	ASTM A479/A276 TYPE316
5. Stem Bearing	PEEK
6. Stem Seal	Stainless Steel with TFE
7. Gland	Brass
8. Union Nut	ASTM A479/A276 TYPE316
9. Bonnet Nut	ASTM A479/A276 TYPE316
10. Handle	Nylon with Brass insert
11. Set Screw	Stainless Steel
12. Panel Nut	ASTM A479/A276 TYPE316
13. Bending Tube	ASTM A479/A276 TYPE316

* Wetted parts are listed in blue.

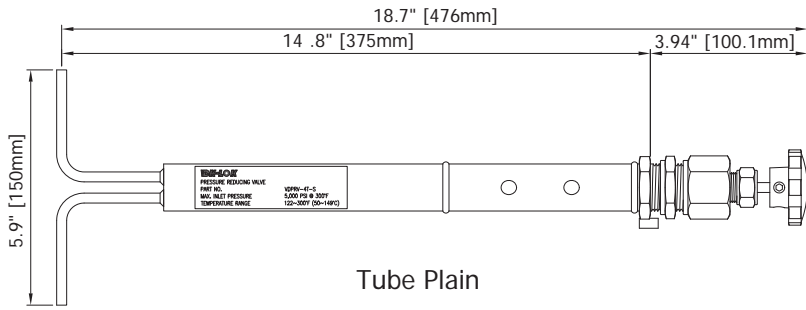
Factory Test

Every pressure reducing valve is factory tested for pressure reducing. This test is to find out whether the pressure of outlet is adjustable by 28 psig(2kg/cm²), 43 psig(3kg/cm²) and 71 psig(5kg/cm²) when the inlet pressure comes in 1850 psig(130kg/cm²).

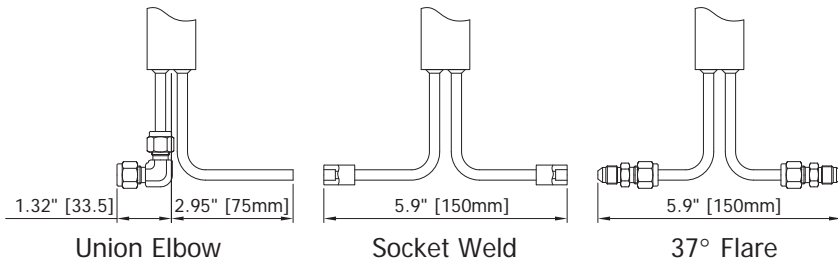
Cleaning

Every pressure reducing valve is cleaned and packaged in accordance with the requirements of our cleaning standard of DC-01.

Ordering Information

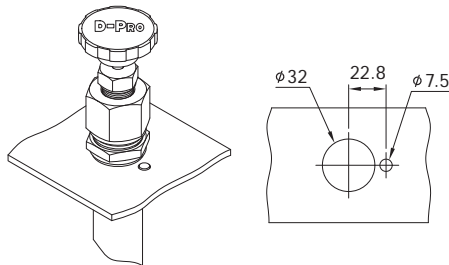


Tube Plain

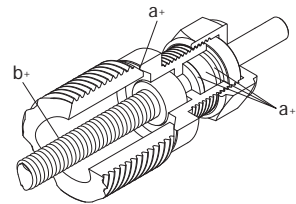


Part No.	End Connection
VDPRV-4T-S	Tube Plain 1/4"
VDPRV-SW4T-S	Socket Weld 1/4"
VDPRV-K4T-S	37° Flare 1/4"
VDPRV-DL-4T-S	Union Elbow 1/4"

Panel Mounting & Lubrication

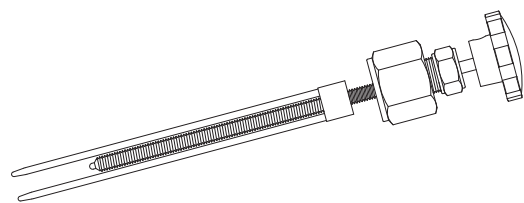
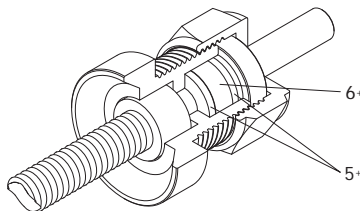


Panel Mounting Dimension



No.	Lubrication
a	Silicon-based
b	Hydrocarbon-based

Replacement Parts



No.	Part (EA)	Description	Ordering No
5	Stem Bearing (2)	Stem Seal	VDPRV-SSR
6	Stem Seal (1)	Replacement Part	

Description	Ordering No
Handle and stem Rod Assembly	VDPRV-HSRA

Safe Valve Selection

The selection of a valve for any application or system design must be considered to ensure safe performance. Valve function, valve rating, material compatibility, proper installation, operation and maintenance remain the sole responsibility of the system of the system designer and the user. Dk Tech accepts no liability for any improper selection, installation, operation or maintenance.