



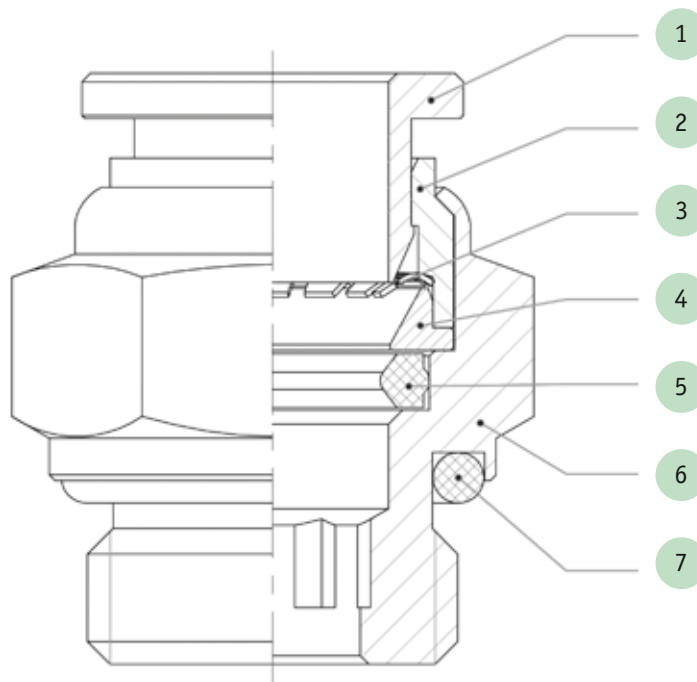
**PNEUMAX**

**GREEN LINE**  
**RACCORDERIA PNEUMATICA**  
***PNEUMATIC FITTINGS***  
TECHNOLOGY & INNOVATION



INOX SS

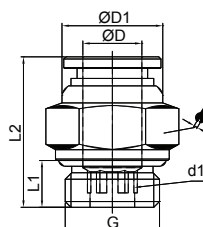
- 1 ANELLO SPINGITORE  
*THRUST SLEEVE*
- 2 DISTANZIALE DI FERMO  
*LOCK RING*
- 3 PINZA DI AGGRAFFAGGIO  
*CRIMPING GRIPPER*
- 4 ANELLO DI SOSTEGNO  
*SUPPORTING RING*
- 5 GUARNIZIONE DI TENUTA  
*SEAL PACKING*
- 6 CORPO DEL RACCORDO  
*FITTING BODY*
- 7 O-RING DI TENUTA  
*O-RING SEAL*



## ART. SSC-G

Diritto filetto a maschio  
Straight male parallel adaptor

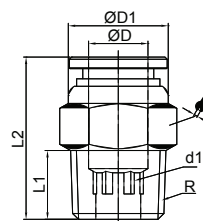
CODICE	ØD	G	L1	L2	⊙	🔑	🏭
SSC04-M5	4	M5	4	19,3	2	10	10
SSC04-G01	4	1/8	5,5	17,3	3	13	10
SSC04-G02	4	1/4	6,5	21,2	3	17	10
SSC06-M5	6	M5	4	20,6	2	12	10
SSC06-G01	6	1/8	5,5	18,8	4	13	10
SSC06-G02	6	1/4	6,5	18,8	4	16	10
SSC08-G01	8	1/8	5,5	23,2	5	14	10
SSC08-G02	8	1/4	6,5	20,7	6	16	10
SSC08-G03	8	3/8	7,5	22,5	6	21	10
SSC10-G02	10	1/4	6,5	26,4	8	17	10
SSC10-G03	10	3/8	7,5	22,9	8	20	5
SSC10-G04	10	1/2	9,0	24	8	24	5
SSC12-G02	12	1/4	6,5	31,3	8	21	5
SSC12-G03	12	3/8	7,5	25,4	10	20	5
SSC12-G04	12	1/2	9	25,4	10	24	5
SSC14-G03	14	3/8	7,5	33	10	22	5
SSC14-G04	14	1/2	9,0	32	10	24	5



## ART. SSC

Diritto filetto conico maschio  
Straight male tapered adaptor

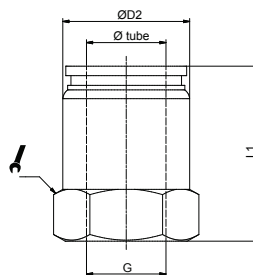
CODICE	ØD	R	L1	L2	⊙	🔑	🏭
SSC04-01	4	1/8	7,5	16,8	3	10	10
SSC04-02	4	1/4	9,5	21	3	14	10
SSC06-01	6	1/8	7,5	19,3	4	12	10
SSC06-02	6	1/4	9,5	19,8	4	14	10
SSC06-03	6	3/8	10,5	22	4	17	10
SSC06-04	6	1/2	12,5	24	4	21	10
SSC08-01	8	1/8	7,5	23,7	6	14	10
SSC08-02	8	1/4	9,5	22,2	6	14	10
SSC08-03	8	3/8	10,5	22,5	6	17	10
SSC08-04	8	1/2	12,5	24	6	21	10
SSC10-02	10	1/4	9,5	26,4	8	17	10
SSC10-03	10	3/8	10,5	22,9	8	17	5
SSC10-04	10	1/2	12,5	25	8	21	5
SSC12-02	12	1/4	9,5	31,3	8	21	5
SSC12-03	12	3/8	10,5	26,4	10	20	5
SSC12-04	12	1/2	13,5	26,4	10	21	5
SSC14-04	14	1/2	12,5	33	10	22	5



**ART. SSCF-G**

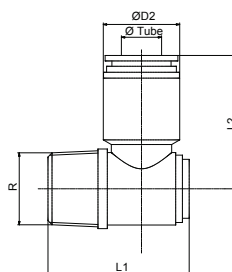
 Diritto femmina (filetto cilindrico)  
 Straight female adaptor (parallel thread)

CODICE	ØD	G	L1	L2		
SSCF04-M5	4	M5	20,2	10,5	12	10
SSCF04-01	4	1/8	21,2	10,5	12	10
SSCF04-02	4	1/4	21	10,5	17	10
SSCF06-01	6	1/8	21,6	12,5	14	10
SSCF06-02	6	1/4	21	12,5	17	10
SSCF08-01	8	1/8	25	14,5	17	10
SSCF08-02	8	1/4	24,5	14,5	17	10


**ART. SSH**

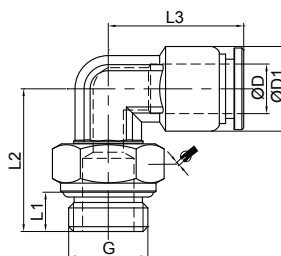
 Anello semplice girevole con asta conico  
 Complete single banjo tapered

CODICE	ØD	R	L1	L2	D2	
SSH04-01	4	1/8	25,5	26	10,5	10
SSH06-01	6	1/8	25,5	26	12,5	10
SSH06-02	6	1/4	28	28	12,5	10
SSH08-01	8	1/8	25,5	29	14,5	10
SSH08-02	8	1/4	28	30	14,5	10
SSH08-03	8	3/8	33,2	33	14,5	10
SSH10-02	10	1/4	28	32	17,5	10
SSH10-03	10	3/8	33,2	35	17,5	10
SSH12-02	12	1/4	28	34	20,5	10
SSH12-03	12	3/8	33,2	36,5	20,5	10
SSH12-04	12	1/2	37,2	38	20,5	10


**ART. SSL-G**



 Gomito girevole filetto cilindrico maschio  
 Swivel L male parallel adaptor

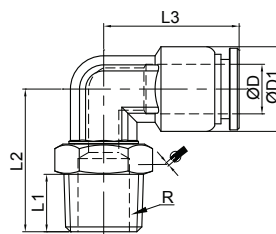
CODICE	ØD	G	L1	L2	L3	ØD1		
SSL04-M5	4	M5	4	17,5	18,3	10	10	10
SSL04-G01	4	1/8	5,5	20	18,3	10	13	10
SSL04-G02	4	1/4	6,5	27,5	23	10,5	14	10
SSL06-M5	6	M5	4	17,5	20,3	12	10	10
SSL06-G01	6	1/8	5,5	22	20,3	12	13	10
SSL06-G02	6	1/4	6,5	23	20,3	12	16	10
SSL06-G03	6	3/8	7,5	28	24	12,5	17	10
SSL08-G01	8	1/8	5,5	22,5	22,3	14	13	10
SSL08-G02	8	1/4	6,5	23,5	22,3	14	16	5
SSL08-G03	8	3/8	7,5	28	27	14,5	17	5
SSL10-G01	10	1/8	5,5	32,3	30,5	17,5	17	5
SSL10-G02	10	1/4	6,5	31	26,4	17	17	5
SSL10-G03	10	3/8	7,5	28,5	26,4	17	20	5
SSL10-G04	10	1/2	9	31	30,5	17,5	21	5
SSL12-G02	12	1/4	6,5	30,5	34	20,5	14	5
SSL12-G03	12	3/8	7,5	30	29,4	20	20	5
SSL12-G04	12	1/2	9	30,5	29,4	20	24	5
SSL14-G03	14	3/8	7,5	33	37	22	17	5
SSL14-G04	12	1/2	9	35	37	22	21	5



## ART. SSL




Gomito girevole filetto conico maschio  
Swivel L tapered adaptor

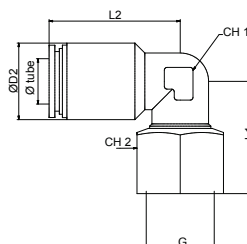
CODICE	ØD	R	L1	L2	L3	ØD1		
SSL04-01	4	1/8	7,5	20	18,3	10	12	10
SSL04-02	4	1/4	9,5	27,5	23	10,5	14	10
SSL06-01	6	1/8	7,5	23	20,3	12	12	10
SSL06-02	6	1/4	9,5	23	20,3	12	14	10
SSL06-03	6	3/8	10,5	28	24	12,5	17	10
SSL08-01	8	1/8	7,5	23,5	22,3	14	12	10
SSL08-02	8	1/4	9,5	23,5	22,3	14	14	5
SSL08-03	8	3/8	10,5	28	27	14,5	17	10
SSL10-02	10	1/4	9,5	33	26,4	17	17	5
SSL10-03	10	3/8	10,5	30	26,4	17	17	5
SSL12-02	12	1/4	9,5	30,5	34	20,5	14	5
SSL12-03	12	3/8	10,5	31,5	29,4	20	17	5
SSL12-04	12	1/2	13,5	33,5	29,4	20	21	5



## ART. SSLF



Gomito girevole femmina (filetto cilindrico)  
Female swivel L adaptor (parallel thread)

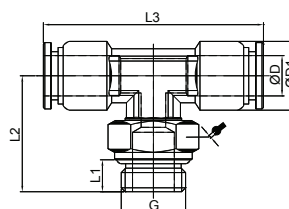
CODICE	ØD	G	L1	L2	D2			
SSLF04-01	4	1/8	25,5	23	10,5	9,2	10	10
SSLF06-01	6	1/8	27	24	12,5	9,2	14	10
SSLF06-02	6	1/4	28	24	12,5	9,2	17	10
SSLF08-01	8	1/8	27	27	14,5	11,2	14	10
SSLF08-02	8	1/4	28	27	14,5	11,2	17	10



## ART. SSB-G

T centrale girevole filetto cilindrico  
Swivel male stud T parallel

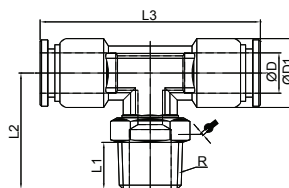
CODICE	ØD	G	L1	L2	L3	ØD1		
SSB04-M5	4	M5	4	17,5	36,6	10	10	10
SSB04-G01	4	1/8	5,5	20	36,6	10	13	10
SSB06-M5	6	M5	4	17,5	40,6	12	10	5
SSB06-G01	6	1/8	5,5	22	40,6	12	13	5
SSB06-G02	6	1/4	6,5	23	40,6	12	16	5
SSB08-G01	8	1/8	5,5	22,5	44,6	14	13	5
SSB08-G02	8	1/4	6,5	23,5	44,6	14	16	5
SSB10-G02	10	1/4	6,5	31	52,8	17	17	5
SSB10-G03	10	3/8	7,5	28,5	52,8	17	20	5
SSB12-G03	12	3/8	7,5	30	58,8	20	20	5
SSB12-G04	12	1/2	9	30,5	58,8	20	24	5



**ART. SSB**

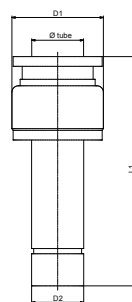
 T centrale girevole filetto conico  
*Swivel male stud T tapered*

CODICE	ØD	R	L1	L2	L3	ØD1		
SSB04-01	4	1/8	7,5	20	36,6	10	12	10
SSB06-01	6	1/8	7,5	23	40,6	12	12	5
SSB06-02	6	1/4	9,5	23	40,6	12	14	5
SSB08-01	8	1/8	7,5	23,5	44,6	14	12	5
SSB08-02	8	1/4	9,5	23,5	44,6	14	14	5
SSB10-02	10	1/4	9,5	33	52,8	17	17	5
SSB10-03	10	3/8	10,5	30	52,8	17	17	5
SSB12-03	12	3/8	10,5	31,5	58,8	20	17	5
SSB12-04	12	1/2	13,5	33,5	58,8	20	21	5


**ART. SSGJ**

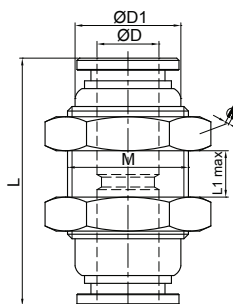
 Riduzione con codolo  
*Plug-in reducer*

CODICE	ØD	D1	D2	L1	
SSGJ06-04	4	10,5	6	41	10
SSGJ08-06	6	12,5	8	44	10
SSGJ08-04	4	10,5	8	43	10
SSGJ10-08	8	14,5	10	47	10
SSGJ10-06	6	12,5	10	47	10
SSGJ12-10	10	17,5	12	53	10
SSGJ12-08	8	14,5	12	52	10
SSGJ14-10	10	17,5	14	56	10


**ART. SSM**


 Passaparete innestabile  
*Bulkhead connector*

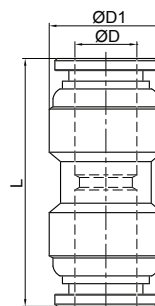
CODICE	ØD	ØD1	L	L1 max	M		
SSM04	4	10	27	8	M12x1	14	10
SSM06	6	12	29,5	8	M14x1	17	10
SSM08	8	14	32,5	8,5	M16x1	19	5
SSM10	10	17	36,8	9,5	M20x1	24	5
SSM12	12	20	39,8	11,5	M22x1	26	5
SSM14	14	24	42	17	M24x1	27	5



## ART. SSU


Diritto innestabile uguale  
Equal straight connector

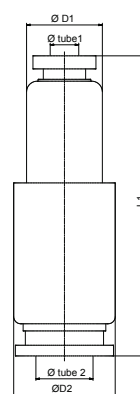
CODICE	ØD	ØD1	L	
SSU04	4	11	27	10
SSU06	6	13	29,5	10
SSU08	8	15	32,5	10
SSU10	10	18	36,8	5
SSU12	12	21	39,8	5
SSU14	14	22	42	5



## ART. SSG

Diritto innestabile riduzione  
Reducer straight connector

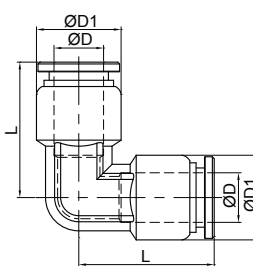
CODICE	ØD1	ØD2	D1	D2	L1	
SSG04-06	4	6	10,5	12,5	30,6	10
SSG06-08	6	8	12,5	14,5	32,8	10
SSG08-10	8	10	14,5	17,5	35	10
SSG10-12	10	12	17,5	20,5	38,2	10



## ART. SSV


Gomito innestabile  
L connector

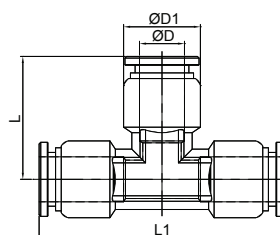
CODICE	ØD	ØD1	L	
SSV04	4	10	18,3	10
SSV06	6	12	20,3	10
SSV08	8	14	22,3	10
SSV10	10	17	26,4	5
SSV12	12	20	29,4	5
SSV14	14	22	37	5



## ART. SSE

T innestabile  
T connector

CODICE	ØD	ØD1	L	L1	
SSE04	4	10	18,3	36,6	10
SSE06	6	12	20,3	40,6	5
SSE08	8	14	22,3	44,6	5
SSE10	10	17	26,4	52,8	5
SSE12	12	20	29,4	58,8	5
SSE14	14	14	37	74	5

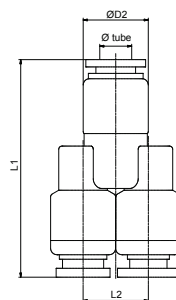




**ART. SSY**

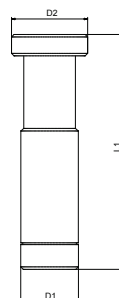
 Y innestabile  
*Y connector*

CODICE	ØD	L1	L2	D2		
SSY04	4	36	14	11		10
SSY06	6	37,5	16	13		10
SSY08	8	41,3	18	15		10
SSY10	10	44,3	21	18		10
SSY12	12	51	24	21		10


**ART. SSP**

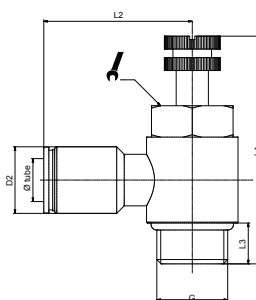
 Tappo  
*Plug*

CODICE	D1	D2	L1			
SSP04	6	4	28			10
SSP06	8	6	33			10
SSP08	10	8	37			10
SSP10	12	10	42			10
SSP12	14	12	44			10
SSP14	16	14	46			10


**ART. SSN-G**

 Regolatore di flusso per cilindro girevole  
*Swivel flow regulator for cylinder*

CODICE	ØD	G	L1	L2	L3	D2		
SSN04-G01	4	1/8	34,5	28	7,5	10,5	12	10
SSN04-G02	4	1/4	43	28	9,5	10,5	14	10
SSN06-G01	6	1/8	34,5	28	7,5	12,5	12	10
SSN06-G02	6	1/4	43	28	9,5	12,5	14	10
SSN08-G01	8	1/8	34,5	30	7,5	14,5	12	10
SSN08-G02	8	1/4	43	30	9,5	14,5	14	10
SSN08-G03	8	3/8	47,3	33	10,5	14,5	19	10
SSN08-G04	8	1/2	51	33	12,5	14,5	22	10
SSN10-G02	10	1/4	43	32,5	9,5	17,5	14	10
SSN10-G03	10	3/8	47,3	35	10,5	17,5	19	10
SSN10-G04	10	1/2	51	35	12,5	17,5	22	10
SSN12-G02	12	1/4	43	36	9,5	20,5	14	10
SSN12-G03	12	3/8	47,3	38	10,5	20,5	19	10
SSN12-G04	12	1/2	51	38	12,5	20,5	22	10



**BREVE DESCRIZIONE**

I raccordi automatici della nostra serie inox SS sono “oil free” e realizzati in conformità agli standard di qualità secondo le normative ISO di riferimento e rispondono alle seguenti specifiche tecniche e applicative.

**SHORT DESCRIPTION**

*The stainless steel push-in fittings “SS” series are “oil free” and manufactured according to the ISO norms of reference, and suitable for the following technical and applicative specifications.*

**SCHEMA TECNICA TECHNICAL SHEET**

FLUIDI UTILIZZABILI <i>EMPLOYABLE FLUIDS</i>		Aria compressa, acqua, vapore (per altri fluidi sentire il nostro Ufficio Tecnico) <i>Compressed air, water, steam (for different fluid pls contact our Technical Dept.)</i>
APPLICAZIONI <i>APPLICATIONS</i>		Pneumatica applicata a settori industriali quali: medicale, chimico e alimentare. In generale ove siano richiesti requisiti di anti-corrosione, resistenza agli acidi e temperature elevate. <i>Pneumatic equipments which are applied widely in the range of Industry such as food service industry, chemical industry and medical industry. In general where required to ensure anti-corrosion and acid resistant, or usage at high temperature.</i>
TUBI CONSIGLIATI <i>SUGGESTED TUBES</i>		TPU (Poliuretano), PA11/PA12 (Poliammide), TPE (Polietilene), TCO (Copoliestere) <i>TPU (Polyurethane), PA11/PA12 (Polyamide), TPE (Polyethylene), TCO (Copolyester)</i>
TOLLERANZE TUBI <i>TUBES TOLERANCES</i>		Diam. da 4 a 10 mm +/- 0,05 Diam. da 12 mm +/- 0,1 <i>Diam. between 4 and 10 mm +/- 0,05 Diam. from 12 mm +/- 0,1</i>
VALORI LIMITE CONSIGLIATI <i>RECOMMENDED LIMIT VALUES</i>	TEMPERATURE <i>TEMPERATURES</i>	Le temperature di esercizio sono comprese in un campo fra -20°C e +120°C. <i>The working temperatures range is between -20°C and +120°C</i>
	PRESSIONI <i>PRESSURES</i>	Le pressioni di esercizio sono comprese in un campo fra 0 e 1,2MPa (0-12bar). <i>The working pressure range is between 0 and 1,2MPa (0-12Bar).</i>
	NOTA <i>NOTE</i>	Per dati più puntuali consultare il catalogo tecnico del proprio fornitore di tubi. <i>For more complete informations pls read the technical catalogue of your tube supplier.</i>
FILETTATURE <i>THREAD TYPE</i>		BSP cilindrica UNI-ISO 228; BSP conica UNI-ISO 7; Metrica ISO/R 262. <i>BSP parallell UNI-ISO 228; BSP tapered UNI-ISO 7; Metric ISO/R 262</i>
MATERIALI <i>MATERIALS</i>	corpo, spintore, distanziale, sottomolla <i>body, sleeve, collar and back ring</i>	Acciaio inox SUS316 <i>Stainless Steel SUS316</i>
	pinza <i>spring</i>	Acciaio Inox SUS301 <i>Stainless Steel SUS301</i>
	guarnizioni tenuta <i>seals</i>	Viton/FKM/FPM <i>FPM/FKM/Viton</i>
NOTA IMPORTANTE <i>IMPORTANT NOTE</i>		La materia prima è amagnetica, comunque dopo la lavorazione a freddo, una piccola quantità di austenite potrebbe essere trasformata in martensite, che potrebbe essere molto debolmente magnetica. <i>The raw material is non-magnetic, however after cold working, a small amount of austenite could be transformed into martensite, which could be very weakly magnetic.</i>

Esito dei test di compatibilità alle specifiche FDA effettuati da **TUV NORD** per conto del produttore

	TEST REPORT N.	DATA	DURATA (GIORNI)	COMPONENTE	MATERIALE	OBBIETTIVO DEL TEST
<b>A</b>	TRHZ1208110	06/08/2012	6	GUARNIZIONE DI TENUTA	VITON FPM FLUORO-RUBBER (FKM)	CONFORMITA' ALLE SPECIFICHE FDA PER DETERMINARE IL GRADO DI ESTRAZIONE DI CLOROFORMIO SOLUBILE (ppm) NELLE GUARNIZIONI DI TENUTA PER CHIUSURA DI CONTENITORI ALIMENTARI
<b>B</b>	TRHZ1208111	06/08/2012	6	RACCORDO AD L MOD. SSV	ACCIAIO INOSSIDABILE SUS316L	DETERMINAZIONE DEL CONTENUTO TOTALE DI CROMO
<b>C</b>	TRHZ1208112	06/08/2012	6	RACCORDO DIRITTO MOD. SSC-G	ACCIAIO INOSSIDABILE SUS316L	DETERMINAZIONE DEL CONTENUTO TOTALE DI CROMO

	METODO DEL TEST (ref. FDA 21 CFR 177.1210)	RISULTATO	CONCLUSIONI
<b>A</b>	IMMERSIONE PER 2 ORE IN ACQUA DISTILLATA A 212°F	VALORE RILEVATO 13,0 VALORE LIMITE 50,0	IL RISULTATO DEL TEST SUI CAMPIONI PRESENTATI SONO CONFORMI ALLE SPECIFICHE FDA PER DETERMINARE LA QUANTITA' DI ESTRATTIVI DI CLOROFORMIO SOLUBILE AMMESSI
	IMMERSIONE PER 2 ORE IN ALCOHOL 8% A 212°F	VALORE RILEVATO 7,0 VALORE LIMITE 50,0	
	IMMERSIONE PER 2 ORE IN EPTANO NORMALE (N-EPTANO) A 150 °F	VALORE RILEVATO 11,5 VALORE LIMITE 50,0	
<b>B</b>	ANALISI VOLUMETRICA (TITOLAZIONE)	VALORE RILEVATO 16,38% VALORE RICHIESTO $\geq 10,5\%$	IL RISULTATO DEL TEST SUL CAMPIONE PRESENTATO DETERMINA CHE ESSO E' IDONEO AL CONTATTO CON GLI ALIMENTI
<b>C</b>	ANALISI VOLUMETRICA (TITOLAZIONE)	VALORE RILEVATO 17,18% VALORE RICHIESTO $\geq 10,5\%$	IL RISULTATO DEL TEST SUL CAMPIONE PRESENTATO DETERMINA CHE ESSO E' IDONEO AL CONTATTO CON GLI ALIMENTI


 Test results to FDA specifications compatibility, made by **TUV NORD** on behalf of the manufacturer

	TEST REPORT N.	DATE	PERIOD (DAYS)	ITEM	MAIN MATERIAL	TEST PURPOSE
<b>A</b>	TRHZ1208110	06/08/2012	6	SEAL RING	FPM FLUORORUBBER VITON (FKM)	THE COMPLIANCE WITH THE FOOD AND DRUG ADMINISTRATION REGULATIONS FOR DETERMINING THE AMOUNT OF CHLOROFORM-SOLUBLE EXTRACTIVES (ppm) FROM CLOSURES WITH SEALING GASKETS FOR FOOD CONTAINERS
<b>B</b>	TRHZ1208111	06/08/2012	6	ELBOW FITTING MOD. SSV	STAINLESS STEEL SUS316L	TO DETERMINE TOTAL CHROMIUM CONTENT IN THE SUBMITTED SAMPLE
<b>C</b>	TRHZ1208112	06/08/2012	6	STRAIGHT FITTING MOD. SSC-G	STAINLESS STEEL SUS316L	TO DETERMINE TOTAL CHROMIUM CONTENT IN THE SUBMITTED SAMPLE

	TEST METHOD (ref. FDA 21 CFR 177.1210)	TEST RESULT	CONCLUSION
<b>A</b>	IMMERSION FOR 2 HOURS IN DISTILLED WATER AT 212 ° F	DETECTED VALUE 13,0 MAX PERMISSIBLE 50,0	WHEN TESTED AS SPECIFIED, THE TEST RESULTS OF THE SUBMITTED SAMPLE COMPLY WITH THE FDA SPECIFICATIONS FOR DETERMINING THE AMOUNT OF CHLOROFORM-SOLUBLE EXTRACTIVES FOR CLOSURES (CLOS)
	IMMERSION FOR 2 HOURS IN ALCOHOL 8% AT 212°F	DETECTED VALUE 7,0 MAX PERMISSIBLE 50,0	
	IMMERSION FOR 2 HOURS IN n-HEPTANE AT 150°F	DETECTED VALUE 11,5 MAX PERMISSIBLE 50,0	
<b>B</b>	TITRATION METHOD	DETECTED VALUE 16,38% REQUIREMENT $\geq 10,5\%$	WHEN TESTED AS SPECIFIED, THE TEST RESULTS OF THE SUBMITTED SAMPLE IS SUITABLE FOR CONTACT WITH FOOD
<b>C</b>	TITRATION METHOD	DETECTED VALUE 17,18% REQUIREMENT $\geq 10,5\%$	WHEN TESTED AS SPECIFIED, THE TEST RESULTS OF THE SUBMITTED SAMPLE IS SUITABLE FOR CONTACT WITH FOOD