



PNEUMAX



LT LINE

COMPONENTS FOR APPLICATIONS
AT LOW TEMPERATURES

LT LINE

Components for applications at low temperatures

Pneumax offers a wide range of components which guarantee high performance and maximum reliability even in harsh environmental conditions with extreme temperatures.





Index



LT Line

Introduction

3

Spool type valves and solenoid valves

	SERIES 200	4
	SERIES STEEL LINE - 1/4" NPT	11
	SERIES STEEL LINE - 3/4" NPT	18
	SERIES SA - ALUMINUM	20

	SERIES 400	10
	SERIES STEEL LINE - 1/2" NPT	15
	SERIES STEEL LINE - 1" NPT	18

Poppet valves and solenoid valves

	SERIES SA - ALUMINUM	23
---	----------------------	----

	SERIES PVA	23
---	------------	----

"Namur" valves and solenoid valves

	SERIES 514	23
---	------------	----

	SERIES 515	24
---	------------	----

Direct operated valves and solenoid valves

	SERIES M (MECHANICS)	25
---	----------------------	----

Air service units

	SERIES AIRPLUS	26
---	----------------	----

	SERIES 1700 STEEL LINE	27
---	------------------------	----

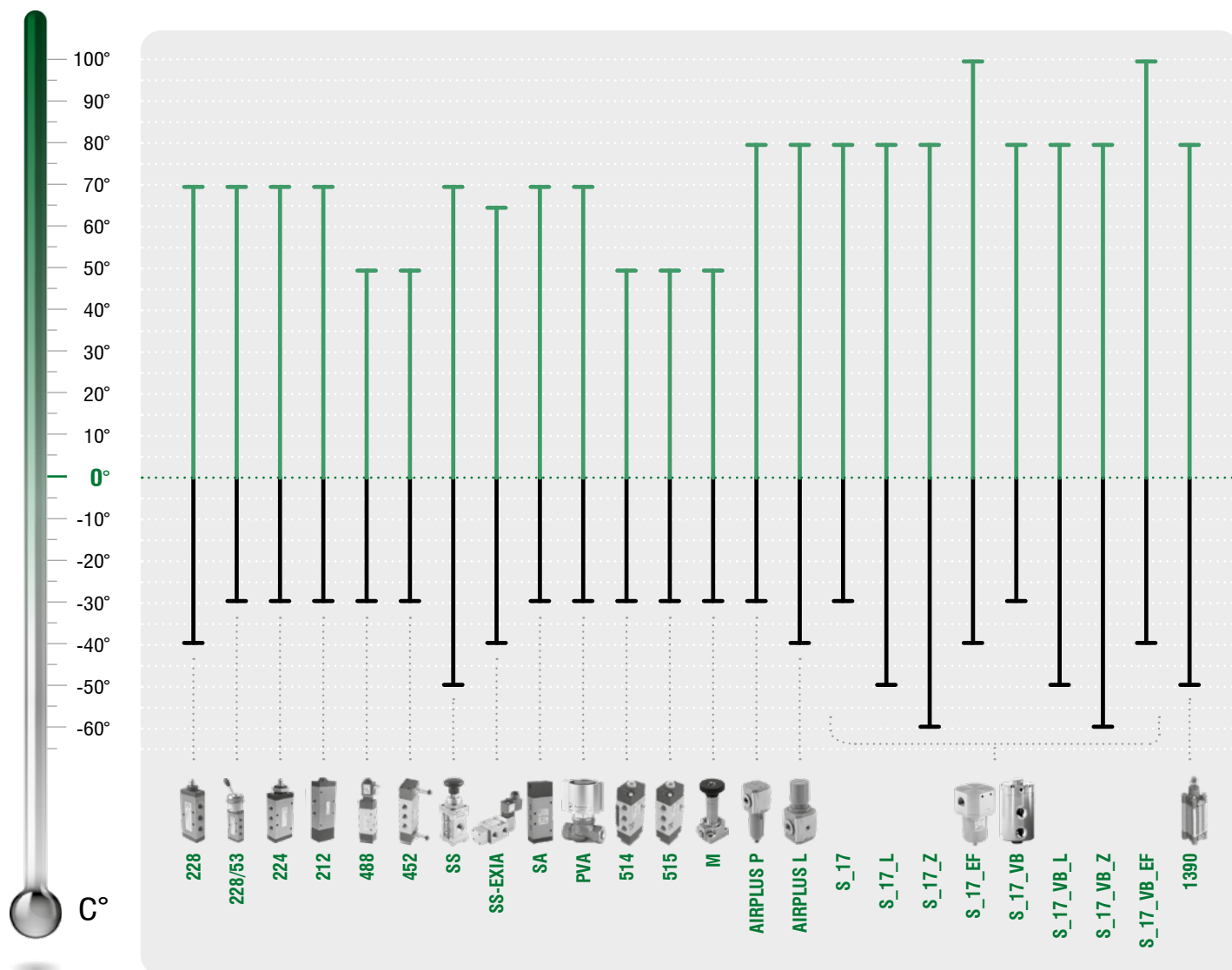
Volume booster

	SERIES FLOWPLUS	27
---	-----------------	----

Cylinders with piston rod according to standard

	SERIES ECOLIGHT	28
---	-----------------	----

Series		Min. Temp.	Max. Temp.
Spool type valves and solenoid valves - SERIES 200	228	-40 °C	70 °C
	228/53	-30 °C	70 °C
	224	-30 °C	70 °C
	212	-30 °C	70 °C
Spool type valves and solenoid valves - SERIES 400	488	-30 °C	50 °C
	452	-30 °C	50 °C
Spool type valves and solenoid valves - SERIES STEEL LINE	SS	-50 °C	70 °C
	SS with Exia coil	-40 °C	65 °C
Spool type valves and solenoid valves, Poppet valves and solenoid valves - SERIES SA - ALUMINUM	SA	-30 °C	70 °C
Poppet valves and solenoid valves - SERIES PVA	PVA	-30 °C	70 °C
"Namur" valves and solenoid valves - SERIES 514 - 515	514	-30 °C	50 °C
	515	-30 °C	50 °C
Direct operated solenoid valves - SERIES M (MECHANICS)	M	-30 °C	50 °C
Air service units - SERIES AIRPLUS	AIRPLUS P	-30 °C	80 °C
	AIRPLUS L	-40 °C	80 °C
Air service units - SERIES 1700 STEEL LINE	S_17	-30 °C	80 °C
	S_17_L	-50 °C	80 °C
	S_17_Z	-60 °C	80 °C
	S_17_EF	-40 °C	100 °C
Air service units - SERIES FLOWPLUS	S_17_VB	-30 °C	80 °C
	S_17_VB_L	-50 °C	80 °C
	S_17_VB_Z	-60 °C	80 °C
	S_17_VB_EF	-40 °C	100 °C
Cylinders with piston rod according to standard - SERIES ECOLIGHT	1390	-50 °C	80 °C



Air distribution

Valves and solenoid valves

Spool type valves and solenoid valves

SERIES 200

	part no. 228._0.1LT				
	Temperature	Version	Type	Function	Connection
	-40°C ... +70°C	Mechanical and manual command	Tappet - Spring	3/2, 5/2	G1/8
	part no. 228._1.1LT				
	Temperature	Version	Type	Function	Connection
	-40°C ... +70°C	Mechanical and manual command	Tappet panel - Spring	3/2, 5/2	G1/8
	part no. 228._2.LT				
	Temperature	Version	Type	Function	Connection
	-40°C ... +70°C	Mechanical and manual command	Lever roller - Spring	3/2, 5/2	G1/8
	part no. 228._2.1/1LT				
	Temperature	Version	Type	Function	Connection
	-40°C ... +70°C	Mechanical and manual command	Lever roller ball bearing - Spring	3/2, 5/2	G1/8
	part no. 228._2.6/LT				
	Temperature	Version	Type	Function	Connection
	-40°C ... +70°C	Mechanical and manual command	Lever button - Spring	3/2, 5/2	G1/8
	part no. 228._27LT				
	Temperature	Version	Type	Function	Connection
	-40°C ... +70°C	Mechanical and manual command	Switch lateral 2 positions	3/2, 5/2	G1/8
	part no. 228._3.LT				
	Temperature	Version	Type	Function	Connection
	-40°C ... +70°C	Mechanical and manual command	Lever roller unidirectional - Spring	3/2, 5/2	G1/8
	part no. 228._4.1LT				
	Temperature	Version	Type	Function	Connection
	-40°C ... +70°C	Mechanical and manual command	Lever roller lateral bidirectional - Spring	3/2, 5/2	G1/8
	part no. 228._4.13LT				
	Temperature	Version	Type	Function	Connection
	-40°C ... +70°C	Mechanical and manual command	Lever sensitive - differential	3/2, 5/2	G1/8
	part no. 228._5/LT				
	Temperature	Version	Type	Function	Connection
	-40°C ... +70°C	Mechanical and manual command	Lever panel Ø30 - 2 positions	3/2, 5/2	G1/8



SERIES 200 (following)



part no. 228._55/_LT				
Temperature	Version	Type	Function	Connection
-40°C ... +70°C	Mechanical and manual command	Frontal lever - 2 positions	3/2, 5/2	G1/8



part no. 228._6.1/_LT				
Temperature	Version	Type	Function	Connection
-40°C ... +70°C	Mechanical and manual command	Push button Ø30 - spring	3/2, 5/2	G1/8



part no. 228._6.13/_LT				
Temperature	Version	Type	Function	Connection
-40°C ... +70°C	Mechanical and manual command	Sensitive push button Ø30 - differential	3/2, 5/2	G1/8



part no. 228._6.22/_LT				
Temperature	Version	Type	Function	Connection
-40°C ... +70°C	Mechanical and manual command	Push button - Spring	3/2, 5/2	G1/8



part no. 228._6.23/_LT				
Temperature	Version	Type	Function	Connection
-40°C ... +70°C	Mechanical and manual command	Raised push button Ø22 - Spring	3/2, 5/2	G1/8



part no. 228._6.25LT				
Temperature	Version	Type	Function	Connection
-40°C ... +70°C	Mechanical and manual command	Push button Ø22 - 2 positions	3/2, 5/2	G1/8



part no. 228._6.27LT				
Temperature	Version	Type	Function	Connection
-40°C ... +70°C	Mechanical and manual command	Switch 2 positions	3/2, 5/2	G1/8



part no. 228._6.28LT				
Temperature	Version	Type	Function	Connection
-40°C ... +70°C	Mechanical and manual command	Key switch 2 positions	3/2, 5/2	G1/8



part no. 228._7.1/_LT				
Temperature	Version	Type	Function	Connection
-40°C ... +70°C	Mechanical and manual command	Palm push button Ø30	3/2, 5/2	G1/8



part no. 228._8.1/_LT				
Temperature	Version	Type	Function	Connection
-40°C ... +70°C	Mechanical and manual command	Push button - Spring	3/2, 5/2	G1/8



part no. 228._8/_LT				
Temperature	Version	Type	Function	Connection
-40°C ... +70°C	Mechanical and manual command	Push button 2 positions	3/2, 5/2	G1/8

SERIES 200 (following)


part no. 228._.9.1/_LT				
Temperature	Version	Type	Function	Connection
-40°C ... +70°C	Mechanical and manual command	Lever lateral - Spring	3/2, 5/2	G1/8



part no. 228._.9_LT				
Temperature	Version	Type	Function	Connection
-40°C ... +70°C	Mechanical and manual command	Lever lateral 2 positions	3/2, 5/2	G1/8



part no. 228.53._.9.1/_LT				
Temperature	Version	Type	Function	Connection
-30°C ... +70°C	Mechanical and manual command	Lever lateral spring centre 3 positions	5/3	G1/8



part no. 228.53._.9/_LT				
Temperature	Version	Type	Function	Connection
-30°C ... +70°C	Mechanical and manual command	Lever lateral 3 positions	5/3	G1/8



part no. 228.53.32.99P/_LT				
Temperature	Version	Type	Function	Connection
-30°C ... +70°C	Mechanical and manual command	Lever central (spring 3 pos.) Operator, Levar, Spole in Technopolymer	5/3	G1/8



part no. 228.53.32.99/_LT				
Temperature	Version	Type	Function	Connection
-30°C ... +70°C	Mechanical and manual command	Lever central (spring 3 pos.) Levar in Technopolymer	5/3	G1/8



part no. 228.53.32.99/_SLT				
Temperature	Version	Type	Function	Connection
-30°C ... +70°C	Mechanical and manual command	Lever central Metal (spring 3 pos.) One position stable	5/3	G1/8



part no. 228.53.32.99._/_LT				
Temperature	Version	Type	Function	Connection
-30°C ... +70°C	Mechanical and manual command	Lever central Metal	5/3	G1/8



part no. 228._.11.1LT				
Temperature	Version	Type	Function	Connection
-40°C ... +70°C	Pneumatic command	Pneumatic-spring	3/2, 5/2	G1/8



part no. 228._.11.12LT				
Temperature	Version	Type	Function	Connection
-40°C ... +70°C	Pneumatic command	Pneumatic - Differential external	3/2, 5/2	G1/8



part no. 228._.11.12/1LT				
Temperature	Version	Type	Function	Connection
-40°C ... +70°C	Pneumatic command	Pneumatic - Differential self aligned	3/2, 5/2	G1/8



SERIES 200 (following)



part no. 228._.11.1LT				
Temperature	Version	Type	Function	Connection
-40°C ... +70°C	Pneumatic command	Pneumatic-pneumatic	3/2, 5/2	G1/8



part no. 228._.13.1LT				
Temperature	Version	Type	Function	Connection
-40°C ... +70°C	Pneumatic command	Amplified pneumatic - Spring	3/2, 5/2	G1/8



part no. 228.53._.11.1LT				
Temperature	Version	Type	Function	Connection
-30°C ... +70°C	Pneumatic command	Pneumatic - Pneumatic 5 ways 3 connections	5/3	G1/8



part no. 224._.1.1LT				
Temperature	Version	Type	Function	Connection
-30°C ... +70°C	Mechanical and manual command	Tappet panel - Spring	3/2, 5/2	G1/4



part no. 224._.2.1LT				
Temperature	Version	Type	Function	Connection
-30°C ... +70°C	Mechanical and manual command	Lever roller - Spring	3/2, 5/2	G1/4



part no. 224._.3.1LT				
Temperature	Version	Type	Function	Connection
-30°C ... +70°C	Mechanical and manual command	Lever roller unidirectional - Spring	3/2, 5/2	G1/4



part no. 224._.8.1LT				
Temperature	Version	Type	Function	Connection
-30°C ... +70°C	Mechanical and manual command	Push button - Spring	3/2, 5/2	G1/4



part no. 224._.8LT				
Temperature	Version	Type	Function	Connection
-30°C ... +70°C	Mechanical and manual command	Push button 2 positions	3/2, 5/2	G1/4



part no. 224._.9.1/_LT				
Temperature	Version	Type	Function	Connection
-30°C ... +70°C	Mechanical and manual command	Lever lateral - Spring	3/2, 5/2	G1/4



part no. 224._.9/_LT				
Temperature	Version	Type	Function	Connection
-30°C ... +70°C	Mechanical and manual command	Lever lateral 2 positions	3/2, 5/2	G1/4



part no. 224.53._.9.1/_LT				
Temperature	Version	Type	Function	Connection
-30°C ... +70°C	Mechanical and manual command	Lateral Lever spring - 3 positions	5/3	G1/4

SERIES 200 (following)


part no. 224.53._.9/_LT				
Temperature	Version	Type	Function	Connection
-30°C ... +70°C	Mechanical and manual command	Lever lateral 3 positions detent	5/3	G1/4



part no. 224.52.9.2LT				
Temperature	Version	Type	Function	Connection
-30°C ... +70°C	Mechanical and manual command	Lever lateral with locking device - 2 positions	5/2	G1/4



part no. 224.53._.9.2LT				
Temperature	Version	Type	Function	Connection
-30°C ... +70°C	Mechanical and manual command	Lever lateral with locking device - Spring 3 positions	5/3	G1/4



part no. 224._.11.1LT				
Temperature	Version	Type	Function	Connection
-30°C ... +70°C	Pneumatic command	Pneumatic-spring	3/2, 5/2	G1/4



part no. 224._.11.12LT				
Temperature	Version	Type	Function	Connection
-30°C ... +70°C	Pneumatic command	Pneumatic - Differential external	3/2, 5/2	G1/4



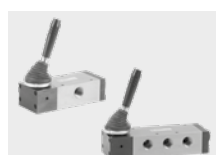
part no. 224._.11.11LT				
Temperature	Version	Type	Function	Connection
-30°C ... +70°C	Pneumatic command	Pneumatic-pneumatic	3/2, 5/2	G1/4



part no. 224.53._.11.11LT				
Temperature	Version	Type	Function	Connection
-30°C ... +70°C	Pneumatic command	Pneumatic - Pneumatic 5 ways 3 connections	5/3	G1/4



part no. 212._.9.1LT				
Temperature	Version	Type	Function	Connection
-30°C ... +70°C	Mechanical and manual command	Lever lateral - Spring	3/2, 5/2	G1/2



part no. 212._.9LT				
Temperature	Version	Type	Function	Connection
-30°C ... +70°C	Mechanical and manual command	Lever lateral 2 positions	3/2, 5/2	G1/2



part no. 212.53._.9.1LT				
Temperature	Version	Type	Function	Connection
-30°C ... +70°C	Mechanical and manual command	Lever lateral spring centre 3 positions	5/3	G1/2



part no. 212.53._.9LT				
Temperature	Version	Type	Function	Connection
-30°C ... +70°C	Mechanical and manual command	Lever lateral 3 positions detent	5/3	G1/2



SERIES 200 (following)



part no. 212._.11.1LT				
Temperature	Version	Type	Function	Connection
-30°C ... +70°C	Pneumatic command	Pneumatic-spring	3/2, 5/2	G1/2



part no. 212._.11.12LT				
Temperature	Version	Type	Function	Connection
-30°C ... +70°C	Pneumatic command	Pneumatic - Differential external	3/2, 5/2	G1/2



part no. 212._.11.11LT				
Temperature	Version	Type	Function	Connection
-30°C ... +70°C	Pneumatic command	Pneumatic-pneumatic	3/2, 5/2	G1/2



part no. 212.53._.11.11LT				
Temperature	Version	Type	Function	Connection
-30°C ... +70°C	Pneumatic command	Pneumatic - Pneumatic 5 ways 3 connections	5/3	G1/2



part no. 212/2._.11.1LT				
Temperature	Version	Type	Function	Connection
-30°C ... +70°C	Pneumatic command	Pneumatic-spring	3/2, 5/2	G1/2



part no. 212/2._.11.12LT				
Temperature	Version	Type	Function	Connection
-30°C ... +70°C	Pneumatic command	Pneumatic - Differential external	3/2, 5/2	G1/2



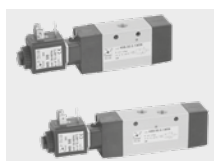
part no. 212/2._.11.12/_LT				
Temperature	Version	Type	Function	Connection
-30°C ... +70°C	Pneumatic command	Pneumatic - Differential self aligned	3/2, 5/2	G1/2



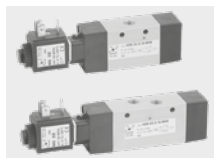
part no. 212/2._.11.11LT				
Temperature	Version	Type	Function	Connection
-30°C ... +70°C	Pneumatic command	Pneumatic-pneumatic	3/2, 5/2	G1/2



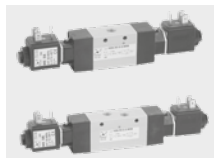
part no. 212/2.53._.11.11LT				
Temperature	Version	Type	Function	Connection
-30°C ... +70°C	Pneumatic command	Pneumatic - Pneumatic 5 ways 3 connections	5/3	G1/2

SERIES 400

part no. 488._0.1.LT

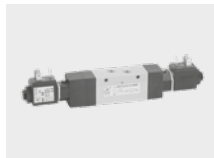
Temperature	Version	Type	Function	Connection
-30°C ... +50°C	Electric control	Solenoid - Spring	3/2, 5/2	G1/8


part no. 488._0.12.LT

Temperature	Version	Type	Function	Connection
-30°C ... +50°C	Electric control	Solenoid - Differential	3/2, 5/2	G1/8


part no. 488._0.0.LT

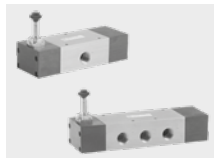
Temperature	Version	Type	Function	Connection
-30°C ... +50°C	Electric control	Solenoid - Solenoid	3/2, 5/2	G1/8


part no. 488.53._0.0.LT

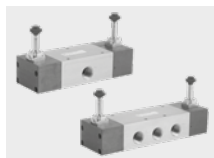
Temperature	Version	Type	Function	Connection
-30°C ... +50°C	Electric control	Solenoid - Solenoid	5/3	G1/8


part no. 452._0.1.M2LT

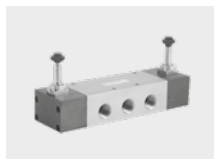
Temperature	Version	Type	Function	Connection
-30°C ... +50°C	Electric control	Solenoid - Spring	3/2, 5/2	G1/2


part no. 452._0.12.M2LT

Temperature	Version	Type	Function	Connection
-30°C ... +50°C	Electric control	Solenoid - Differential	3/2, 5/2	G1/2


part no. 452._0.0.M2LT

Temperature	Version	Type	Function	Connection
-30°C ... +50°C	Electric control	Solenoid - Solenoid	3/2, 5/2	G1/2


part no. 452.53._0.0.M2LT

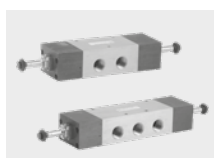
Temperature	Version	Type	Function	Connection
-30°C ... +50°C	Electric control	Solenoid - Solenoid	5/3	G1/2


part no. 452/1._0.1.M2LT

Temperature	Version	Type	Function	Connection
-30°C ... +50°C	Electric control	Solenoid - Spring	3/2, 5/2	G1/2


part no. 452/1._0.12.M2LT

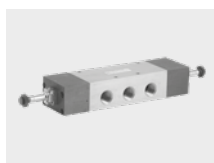
Temperature	Version	Type	Function	Connection
-30°C ... +50°C	Electric control	Solenoid - Differential	3/2, 5/2	G1/2


part no. 452/1._0.0.M2LT

Temperature	Version	Type	Function	Connection
-30°C ... +50°C	Electric control	Solenoid - Solenoid	3/2, 5/2	G1/2



SERIES 400 (following)



part no. 452/1.53...0.0.M2LT				
Temperature	Version	Type	Function	Connection
-30°C ... +50°C	Electric control	Solenoid - Solenoid	5/3	G1/2

SERIES STEEL LINE - 1/4" NPT



part no. SS1432C1101L				
Temperature	Version	Type	Function	Connection
-50°C ... +70°C	Pneumatic command	Pneumatic-spring valve	3/2	1/4" NPT



part no. SS1432C1111L				
Temperature	Version	Type	Function	Connection
-50°C ... +70°C	Pneumatic command	Pneumatic-pneumatic valve	3/2	1/4" NPT



part no. SS1432C0802L				
Temperature	Version	Type	Function	Connection
-50°C ... +70°C	Mechanical and manual command	2 position push-pull valve	3/2	1/4" NPT



part no. SS1432C0801L				
Temperature	Version	Type	Function	Connection
-50°C ... +70°C	Mechanical and manual command	Push button-spring valve	3/2	1/4" NPT



part no. SS1432C0811L				
Temperature	Version	Type	Function	Connection
-50°C ... +70°C	Mechanical and manual command	Push button-pneumatic return valve	3/2	1/4" NPT



part no. SS1432C0001L				
Temperature	Version	Type	Function	Connection
-50°C ... +70°C	Mechanical and manual command	Tappet-spring valve	3/2	1/4" NPT



part no. SS1432C0401L				
Temperature	Version	Type	Function	Connection
-50°C ... +70°C	Mechanical and manual command	Roller lever-spring valve	3/2	1/4" NPT



part no. SS1432C0411L				
Temperature	Version	Type	Function	Connection
-50°C ... +70°C	Mechanical and manual command	Roller lever-pneumatic valve	3/2	1/4" NPT



part no. SS1432C1114L				
Temperature	Version	Type	Function	Connection
-50°C ... +70°C	Pneumatic command	Pneumatic valve with self-locking manual reset	3/2	1/4" NPT

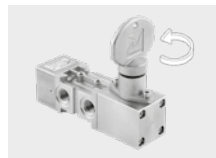
SERIES STEEL LINE - 1/4" NPT (following)

part no. SS1432C1115L

Temperature	Version	Type	Function	Connection
-50°C ... +70°C	Pneumatic command	Pneumatic valve with self-locking manual reset inverted	3/2	1/4" NPT


part no. SS1432C1601L

Temperature	Version	Type	Function	Connection
-50°C ... +70°C	Mechanical and manual command	Key-spring valve stable	3/2	1/4" NPT


part no. SS1432C2601L

Temperature	Version	Type	Function	Connection
-50°C ... +70°C	Mechanical and manual command	Key-spring valve instable	3/2	1/4" NPT


part no. SS1432C1611L

Temperature	Version	Type	Function	Connection
-50°C ... +70°C	Mechanical and manual command	Pneumatic-key valve stable	3/2	1/4" NPT


part no. SS1432C2611L

Temperature	Version	Type	Function	Connection
-50°C ... +70°C	Mechanical and manual command	Pneumatic-key valve instable	3/2	1/4" NPT


part no. SS145201101L

Temperature	Version	Type	Function	Connection
-50°C ... +70°C	Pneumatic command	Pneumatic-spring valve	5/2	1/4" NPT


part no. SS145201111L

Temperature	Version	Type	Function	Connection
-50°C ... +70°C	Pneumatic command	Pneumatic-pneumatic valve	5/2	1/4" NPT


part no. SS145311111L

Temperature	Version	Type	Function	Connection
-50°C ... +70°C	Pneumatic command	Pneumatic-pneumatic closed centers valve	5/3	1/4" NPT


part no. SS145200802L

Temperature	Version	Type	Function	Connection
-50°C ... +70°C	Mechanical and manual command	2 position push-pull valve	5/2	1/4" NPT


part no. SS145200801L

Temperature	Version	Type	Function	Connection
-50°C ... +70°C	Mechanical and manual command	Push button-spring valve	5/2	1/4" NPT


part no. SS145200811L

Temperature	Version	Type	Function	Connection
-50°C ... +70°C	Mechanical and manual command	Push button-pneumatic return valve	5/2	1/4" NPT



SERIES STEEL LINE - 1/4" NPT (following)



part no. **SS145200001L**

Temperature	Version	Type	Function	Connection
-50°C ... +70°C	Mechanical and manual command	Tappet-spring valve	5/2	1/4" NPT



part no. **SS145200401L**

Temperature	Version	Type	Function	Connection
-50°C ... +70°C	Mechanical and manual command	Roller lever-spring valve	5/2	1/4" NPT



part no. **SS145200411L**

Temperature	Version	Type	Function	Connection
-50°C ... +70°C	Mechanical and manual command	Roller lever-pneumatic valve	5/2	1/4" NPT



part no. **SS145201114L**

Temperature	Version	Type	Function	Connection
-50°C ... +70°C	Pneumatic command	Pneumatic valve with self-locking manual reset	5/2	1/4" NPT



part no. **SS145201115L**

Temperature	Version	Type	Function	Connection
-50°C ... +70°C	Pneumatic command	Pneumatic valve with self-locking manual reset inverted	5/2	1/4" NPT



part no. **SS145201601L**

Temperature	Version	Type	Function	Connection
-50°C ... +70°C	Mechanical and manual command	Key-spring valve stable	5/2	1/4" NPT



part no. **SS145202601L**

Temperature	Version	Type	Function	Connection
-50°C ... +70°C	Mechanical and manual command	Key-spring valve instable	5/2	1/4" NPT



part no. **SS145201611L**

Temperature	Version	Type	Function	Connection
-50°C ... +70°C	Mechanical and manual command	Pneumatic-key valve stable	5/2	1/4" NPT



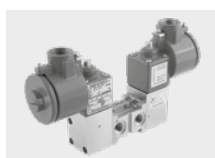
part no. **SS145202611L**

Temperature	Version	Type	Function	Connection
-50°C ... +70°C	Mechanical and manual command	Pneumatic-key valve instable	5/2	1/4" NPT



part no. **SS1432CB_01L**

Temperature	Version	Type	Function	Connection
-50°C ... +70°C	Electric control	Solenoid-spring valve	3/2	1/4" NPT



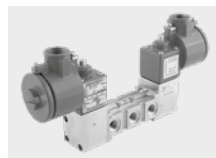
part no. **SS1432CB_B_L**

Temperature	Version	Type	Function	Connection
-50°C ... +70°C	Electric control	Solenoid-solenoid valve	3/2	1/4" NPT

SERIES STEEL LINE - 1/4" NPT (following)

 part no. **SS14520B_01L**

Temperature	Version	Type	Function	Connection
-50°C ... +70°C	Electric control	Solenoid-spring valve	5/2	1/4" NPT


 part no. **SS14520B_B_L**

Temperature	Version	Type	Function	Connection
-50°C ... +70°C	Electric control	Solenoid-solenoid valve	5/2	1/4" NPT


 part no. **SS1432CB_14L**

Temperature	Version	Type	Function	Connection
-50°C ... +70°C	Electric control	Solenoid valve with self-locking manual reset	3/2	1/4" NPT


 part no. **SS1432CB_15L**

Temperature	Version	Type	Function	Connection
-50°C ... +70°C	Electric control	Solenoid valve with self-locking manual reset inverted	3/2	1/4" NPT


 part no. **SS14520B_14L**

Temperature	Version	Type	Function	Connection
-50°C ... +70°C	Electric control	Solenoid valve with self-locking manual reset	5/2	1/4" NPT


 part no. **SS14520B_15L**

Temperature	Version	Type	Function	Connection
-50°C ... +70°C	Electric control	Solenoid valve with self-locking manual reset inverted	5/2	1/4" NPT


 part no. **SS1432CC_01L - with Exia coil**

Temperature	Version	Type	Function	Connection
-40°C ... +65°C	Electric control	Solenoid-spring valve	3/2	1/4" NPT


 part no. **SS1432CC_C_L - with Exia coil**

Temperature	Version	Type	Function	Connection
-40°C ... +65°C	Electric control	Solenoid-solenoid valve	3/2	1/4" NPT


 part no. **SS14520C_01L - with Exia coil**

Temperature	Version	Type	Function	Connection
-40°C ... +65°C	Electric control	Solenoid-spring valve	5/2	1/4" NPT


 part no. **SS14520C_C_L - with Exia coil**

Temperature	Version	Type	Function	Connection
-40°C ... +65°C	Electric control	Solenoid-solenoid valve	5/2	1/4" NPT


 part no. **SS1432CC_14L - with Exia coil**

Temperature	Version	Type	Function	Connection
-40°C ... +65°C	Electric control	Solenoid valve with self-locking manual reset	3/2	1/4" NPT



SERIES STEEL LINE - 1/4" NPT (following)



part no. SS1432CC_15L - with Exia coil

Temperature	Version	Type	Function	Connection
-40°C ... +65°C	Electric control	Solenoid valve with self-locking manual reset inverted	3/2	1/4" NPT



part no. SS14520C_14L - with Exia coil

Temperature	Version	Type	Function	Connection
-40°C ... +65°C	Electric control	Solenoid valve with self-locking manual reset	5/2	1/4" NPT



part no. SS14520C_15L - with Exia coil

Temperature	Version	Type	Function	Connection
-40°C ... +65°C	Electric control	Solenoid valve with self-locking manual reset inverted	5/2	1/4" NPT

ACCESSORIES SERIES STEEL LINE



part no. SS14T200L

Temperature	Version	Type	Function	Connection
-50°C ... +70°C	Accessories	2 outputs	Flow divider	1/4" NPT



part no. SS14RF_L

Temperature	Version	Type	Function	Connection
-50°C ... +70°C	Accessories	Unidirectional - Bidirectional	Flow regulator	1/4" NPT



part no. SS14VUSL

Temperature	Version	Type	Function	Connection
-50°C ... +70°C	Accessories	Single mounting	Unidirectional	1/4" NPT



part no. SS14VUGL

Temperature	Version	Type	Function	Connection
-50°C ... +70°C	Accessories	Mounting as manifold	Unidirectional	1/4" NPT

SERIES STEEL LINE - 1/2" NPT



part no. SS1232C1101L

Temperature	Version	Type	Function	Connection
-50°C ... +70°C	Pneumatic command	Pneumatic-spring valve	3/2	1/2" NPT



part no. SS1232C1111L

Temperature	Version	Type	Function	Connection
-50°C ... +70°C	Pneumatic command	Pneumatic-pneumatic valve	3/2	1/2" NPT



part no. SS1232C0802L

Temperature	Version	Type	Function	Connection
-50°C ... +70°C	Mechanical and manual command	2 position push-pull valve	3/2	1/2" NPT

SERIES STEEL LINE - 1/2" NPT (following)


part no. SS1232C0801L				
Temperature	Version	Type	Function	Connection
-50°C ... +70°C	Mechanical and manual command	Push button-spring valve	3/2	1/2" NPT



part no. SS1232C0811L				
Temperature	Version	Type	Function	Connection
-50°C ... +70°C	Mechanical and manual command	Push button-pneumatic return valve	3/2	1/2" NPT



part no. SS1232C1114L				
Temperature	Version	Type	Function	Connection
-50°C ... +70°C	Pneumatic command	Pneumatic valve with self-locking manual reset	3/2	1/2" NPT



part no. SS1232C1115L				
Temperature	Version	Type	Function	Connection
-50°C ... +70°C	Pneumatic command	Pneumatic valve with self-locking manual reset inverted	3/2	1/2" NPT



part no. SS125201101L				
Temperature	Version	Type	Function	Connection
-50°C ... +70°C	Pneumatic command	Pneumatic-spring valve	5/2	1/2" NPT



part no. SS125201111L				
Temperature	Version	Type	Function	Connection
-50°C ... +70°C	Pneumatic command	Pneumatic-pneumatic valve	5/2	1/2" NPT



part no. SS125311111L				
Temperature	Version	Type	Function	Connection
-50°C ... +70°C	Pneumatic command	Pneumatic-pneumatic closed centers valve	5/3	1/2" NPT



part no. SS125200802L				
Temperature	Version	Type	Function	Connection
-50°C ... +70°C	Mechanical and manual command	2 position push-pull valve	5/2	1/2" NPT



part no. SS125200801L				
Temperature	Version	Type	Function	Connection
-50°C ... +70°C	Mechanical and manual command	Push button-spring valve	5/2	1/2" NPT



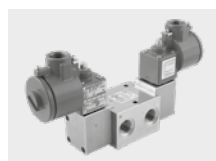
part no. SS125200811L				
Temperature	Version	Type	Function	Connection
-50°C ... +70°C	Mechanical and manual command	Push button-pneumatic return valve	5/2	1/2" NPT



part no. SS1232CB_01L				
Temperature	Version	Type	Function	Connection
-50°C ... +70°C	Electric control	Solenoid-spring valve	3/2	1/2" NPT



SERIES STEEL LINE - 1/2" NPT (following)



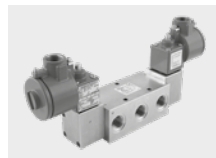
part no. SS1232CB_B_L

Temperature	Version	Type	Function	Connection
-50°C ... +70°C	Electric control	Solenoid-solenoid valve	3/2	1/2" NPT



part no. SS12520B_01L

Temperature	Version	Type	Function	Connection
-50°C ... +70°C	Electric control	Solenoid-spring valve	5/2	1/2" NPT



part no. SS12520B_B_L

Temperature	Version	Type	Function	Connection
-50°C ... +70°C	Electric control	Solenoid-solenoid valve	5/2	1/2" NPT



part no. SS1232CB_14L

Temperature	Version	Type	Function	Connection
-50°C ... +70°C	Electric control	Solenoid valve with self-locking manual reset	3/2	1/2" NPT



part no. SS1232CB_15L

Temperature	Version	Type	Function	Connection
-50°C ... +70°C	Electric control	Solenoid valve with self-locking manual reset inverted	3/2	1/2" NPT



part no. SS1232CC_01L - with Exia coil

Temperature	Version	Type	Function	Connection
-40°C ... +65°C	Electric control	Solenoid-spring valve	3/2	1/2" NPT



part no. SS1232CC_C_L - with Exia coil

Temperature	Version	Type	Function	Connection
-40°C ... +65°C	Electric control	Solenoid-solenoid valve	3/2	1/2" NPT



part no. SS12520C_01L - with Exia coil

Temperature	Version	Type	Function	Connection
-40°C ... +65°C	Electric control	Solenoid-spring valve	5/2	1/2" NPT



part no. SS12520C_C_L - with Exia coil

Temperature	Version	Type	Function	Connection
-40°C ... +65°C	Electric control	Solenoid-solenoid valve	5/2	1/2" NPT



part no. SS1232CC_14L - with Exia coil

Temperature	Version	Type	Function	Connection
-40°C ... +65°C	Electric control	Solenoid valve with self-locking manual reset	3/2	1/2" NPT



part no. SS1232CC_15L - with Exia coil

Temperature	Version	Type	Function	Connection
-40°C ... +65°C	Electric control	Solenoid valve with self-locking manual reset inverted	3/2	1/2" NPT

SERIES STEEL LINE - 3/4" NPT


part no. SS3432C1101L				
Temperature	Version	Type	Function	Connection
-50°C ... +70°C	Pneumatic command	Pneumatic-spring valve	3/2	3/4" NPT



part no. SS3432C1111L				
Temperature	Version	Type	Function	Connection
-50°C ... +70°C	Pneumatic command	Pneumatic-pneumatic valve	3/2	3/4" NPT



part no. SS345201101L				
Temperature	Version	Type	Function	Connection
-50°C ... +70°C	Pneumatic command	Pneumatic-spring valve	5/2	3/4" NPT



part no. SS345201111L				
Temperature	Version	Type	Function	Connection
-50°C ... +70°C	Pneumatic command	Pneumatic-pneumatic valve	5/2	3/4" NPT

SERIES STEEL LINE - 1" NPT


part no. SS1132C1101L				
Temperature	Version	Type	Function	Connection
-50°C ... +70°C	Pneumatic command	Pneumatic-spring valve	3/2	1" NPT



part no. SS1132C1111L				
Temperature	Version	Type	Function	Connection
-50°C ... +70°C	Pneumatic command	Pneumatic-pneumatic valve	3/2	1" NPT



part no. SS115201101L				
Temperature	Version	Type	Function	Connection
-50°C ... +70°C	Pneumatic command	Pneumatic-spring valve	5/2	1" NPT



part no. SS115201111L				
Temperature	Version	Type	Function	Connection
-50°C ... +70°C	Pneumatic command	Pneumatic-pneumatic valve	5/2	1" NPT



ACCESSORIES SERIES STEEL LINE



part no. SS12RF_L				
Temperature	Version	Type	Function	Connection
-50°C ... +70°C	Accessories	Unidirectional - Bidirectional	Flow regulator	1/2" NPT



part no. SS12VUSL				
Temperature	Version	Type	Function	Connection
-50°C ... +70°C	Accessories	Single mounting	Unidirectional	1/2" NPT



part no. SS12VUGL				
Temperature	Version	Type	Function	Connection
-50°C ... +70°C	Accessories	Mounting as manifold	Unidirectional	1/2" NPT



part no. SS1401RF_L				
Temperature	Version	Type	Function	Connection
-50°C ... +70°C	Accessories	Unidirectional - Bidirectional	Flow regulator	1/4" NPT



part no. SS1201RF_L				
Temperature	Version	Type	Function	Connection
-50°C ... +70°C	Accessories	Unidirectional - Bidirectional	Flow regulator	1/2" NPT



part no. SS3401RF_L				
Temperature	Version	Type	Function	Connection
-50°C ... +70°C	Accessories	Unidirectional - Bidirectional	Flow regulator	3/4" NPT



part no. SS1101RF_L				
Temperature	Version	Type	Function	Connection
-50°C ... +70°C	Accessories	Unidirectional - Bidirectional	Flow regulator	1" NPT



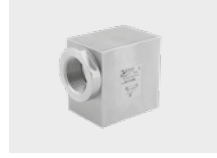
part no. SS1402SRL				
Temperature	Version	Type	Function	Connection
-50°C ... +70°C	Accessories	-	Quick exhaust valve	1/4" NPT



part no. SS1202SRL				
Temperature	Version	Type	Function	Connection
-50°C ... +70°C	Accessories	-	Quick exhaust valve	1/2" NPT



part no. SS3402SRL				
Temperature	Version	Type	Function	Connection
-50°C ... +70°C	Accessories	-	Quick exhaust valve	3/4" NPT



part no. SS1102SRL				
Temperature	Version	Type	Function	Connection
-50°C ... +70°C	Accessories	-	Quick exhaust valve	1" NPT

SERIES SA - ALUMINUM


part no. SA1432C1111L				
Temperature	Version	Type	Function	Connection
-30°C ... +70°C	Pneumatic command	Pneumatic-pneumatic	3/2	1/4" NPT



part no. SA145201111L				
Temperature	Version	Type	Function	Connection
-30°C ... +70°C	Pneumatic command	Pneumatic-pneumatic	5/2	1/4" NPT



part no. SA1432C1101L				
Temperature	Version	Type	Function	Connection
-30°C ... +70°C	Pneumatic command	Pneumatic-spring	3/2	1/4" NPT



part no. SA145201101L				
Temperature	Version	Type	Function	Connection
-30°C ... +70°C	Pneumatic command	Pneumatic-spring	5/2	1/4" NPT



part no. SA1432C0801L				
Temperature	Version	Type	Function	Connection
-30°C ... +70°C	Mechanical and manual command	Push button - Spring	3/2	1/4" NPT



part no. SA145200801L				
Temperature	Version	Type	Function	Connection
-30°C ... +70°C	Mechanical and manual command	Push button - Spring	5/2	1/4" NPT



part no. SA1432C0803L				
Temperature	Version	Type	Function	Connection
-30°C ... +70°C	Mechanical and manual command	Push button 2 positions	3/2	1/4" NPT



part no. SA145200803L				
Temperature	Version	Type	Function	Connection
-30°C ... +70°C	Mechanical and manual command	Push button 2 positions	5/2	1/4" NPT



part no. SA1432C0811L				
Temperature	Version	Type	Function	Connection
-30°C ... +70°C	Mechanical and manual command	Push button-pneumatic	3/2	1/4" NPT



part no. SA145200811L				
Temperature	Version	Type	Function	Connection
-30°C ... +70°C	Mechanical and manual command	Push button-pneumatic	5/2	1/4" NPT



part no. SA1232C1111L				
Temperature	Version	Type	Function	Connection
-30°C ... +70°C	Pneumatic command	Pneumatic-pneumatic	3/2	1/2" NPT



SERIES SA - ALUMINUM



part no. SA125201111L				
Temperature	Version	Type	Function	Connection
-30°C ... +70°C	Pneumatic command	Pneumatic-pneumatic	5/2	1/2" NPT



part no. SA1232C1101L				
Temperature	Version	Type	Function	Connection
-30°C ... +70°C	Pneumatic command	Pneumatic-spring	3/2	1/2" NPT



part no. SA125201101L				
Temperature	Version	Type	Function	Connection
-30°C ... +70°C	Pneumatic command	Pneumatic-spring	5/2	1/2" NPT



part no. SA1132C1111L				
Temperature	Version	Type	Function	Connection
-30°C ... +70°C	Pneumatic command	Pneumatic-pneumatic	3/2	1" NPT



part no. SA115201111L				
Temperature	Version	Type	Function	Connection
-30°C ... +70°C	Pneumatic command	Pneumatic-pneumatic	5/2	1" NPT



part no. SA1132C1101L				
Temperature	Version	Type	Function	Connection
-30°C ... +70°C	Pneumatic command	Pneumatic-spring	3/2	1" NPT



part no. SA115201101L				
Temperature	Version	Type	Function	Connection
-30°C ... +70°C	Pneumatic command	Pneumatic-spring	5/2	1" NPT

ACCESSORIES SERIES SA - ALUMINUM



part no. A6.01._				
Temperature	Version	Type	Function	Connection
-30°C ... +70°C	Accessories	Unidirectional - Bidirectional	Flow regulator	1/4" NPT



part no. A6.01._				
Temperature	Version	Type	Function	Connection
-30°C ... +70°C	Accessories	Unidirectional - Bidirectional	Flow regulator	1/2" NPT

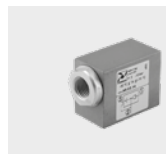


part no. A6.01.34				
Temperature	Version	Type	Function	Connection
-30°C ... +70°C	Accessories	Unidirectional	Flow regulator	3/4" NPT

SERIES SA ACCESSORIES - ALUMINUM (following)

 part no. **A6.01.11**

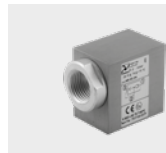
Temperature	Version	Type	Function	Connection
-30°C ... +70°C	Accessories	Unidirectional	Flow regulator	1" NPT


 part no. **A6.02.14**

Temperature	Version	Type	Function	Connection
-30°C ... +70°C	Accessories	-	Quick exhaust valve	1/4" NPT


 part no. **A6.02.12**

Temperature	Version	Type	Function	Connection
-30°C ... +70°C	Accessories	-	Quick exhaust valve	1/2" NPT


 part no. **A6.02.34**

Temperature	Version	Type	Function	Connection
-30°C ... +70°C	Accessories	-	Quick exhaust valve	3/4" NPT


 part no. **A6.02.11**

Temperature	Version	Type	Function	Connection
-30°C ... +70°C	Accessories	-	Quick exhaust valve	1" NPT


 part no. **A6.07.14**

Temperature	Version	Type	Function	Connection
-30°C ... +70°C	Accessories	-	Unidirectional	1/4" NPT


 part no. **A6.07.12**

Temperature	Version	Type	Function	Connection
-30°C ... +70°C	Accessories	-	Unidirectional	1/2" NPT


 part no. **A6.07.34**

Temperature	Version	Type	Function	Connection
-30°C ... +70°C	Accessories	-	Unidirectional	3/4" NPT


 part no. **A6.07.11**

Temperature	Version	Type	Function	Connection
-30°C ... +70°C	Accessories	-	Unidirectional	1" NPT



Poppet valves and solenoid valves

SERIES SA - ALUMINUM



part no. SA772321101C				
Temperature	Version	Type	Function	Connection
-30°C ... +70°C	Pneumatic command	Pneumatic-spring	3/2	1/2" NPT



part no. SA773321101C				
Temperature	Version	Type	Function	Connection
-30°C ... +70°C	Pneumatic command	Pneumatic-spring	3/2	3/4" NPT



part no. SA771321101C				
Temperature	Version	Type	Function	Connection
-30°C ... +70°C	Pneumatic command	Pneumatic-spring	3/2	1" NPT



part no. SAN776321101				
Temperature	Version	Type	Function	Connection
-30°C ... +70°C	Pneumatic command	Pneumatic-spring	3/2	1 1/2" NPT

SERIES PVA



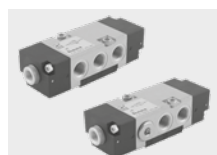
part no. PVA.B._.T._NLT				
Temperature	Version	Type	Function	Connection
-30°C ... +70°C	Pneumatic command	"T" body version pad valve	-	G1/4 - G3/8 - G1/2 G3/4 - G1 - G1 1/4 G1 1/2 - G2



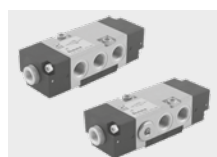
part no. PVA.B._.Y._NLT				
Temperature	Version	Type	Function	Connection
-30°C ... +70°C	Pneumatic command	"Y" body version pad valve	-	G1/4 - G3/8 - G1/2 G3/4 - G1 - G1 1/4 G1 1/2 - G2

"NAMUR" valves and solenoid valves

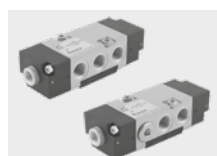
SERIES 514



part no. 51_.00.16LT				
Temperature	Version	Type	Function	Connection
-30°C ... +50°C	Pneumatic command	Pneumatic-Differential	4/2 - 5/2	G1/4 - 1/4" NPT



part no. 51_.00.18LT				
Temperature	Version	Type	Function	Connection
-30°C ... +50°C	Pneumatic command	Pneumatic-pneumatic	4/2 - 5/2	G1/4 - 1/4" NPT

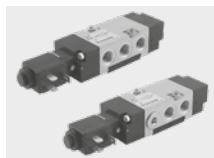


part no. 51_.00.19LT				
Temperature	Version	Type	Function	Connection
-30°C ... +50°C	Pneumatic command	Pneumatic-spring	4/2 - 5/2	G1/4 - 1/4" NPT

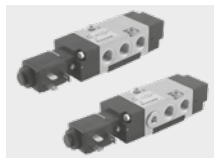
SERIES 514

part no. 51_..00.35_LT

Temperature	Version	Type	Function	Connection
-30°C ... +50°C	Electric control	Solenoid-Solenoid	4/2 - 5/2	G1/4 - 1/4" NPT


part no. 51_..00.36_LT

Temperature	Version	Type	Function	Connection
-30°C ... +50°C	Electric control	Solenoid-Differential	4/2 - 5/2	G1/4 - 1/4" NPT


part no. 51_..00.39_LT

Temperature	Version	Type	Function	Connection
-30°C ... +50°C	Electric control	Solenoid-spring	4/2 - 5/2	G1/4 - 1/4" NPT


part no. 51_92.00_.._LT

Temperature	Version	Type	Function	Connection
-30°C ... +50°C	Electric control	Universal kit	4/2 - 5/2	G1/4 - 1/4" NPT

SERIES 515

part no. 51_52.00.16LT

Temperature	Version	Type	Function	Connection
-30°C ... +50°C	Pneumatic command	Pneumatic-Differential	5/2	G1/4 - 1/4" NPT


part no. 51_52.00.18LT

Temperature	Version	Type	Function	Connection
-30°C ... +50°C	Pneumatic command	Pneumatic-pneumatic	5/2	G1/4 - 1/4" NPT


part no. 51_52.00.19LT

Temperature	Version	Type	Function	Connection
-30°C ... +50°C	Pneumatic command	Pneumatic-spring	5/2	G1/4 - 1/4" NPT


part no. 51_52.00.35_LT

Temperature	Version	Type	Function	Connection
-30°C ... +50°C	Electric control	Solenoid-Solenoid	5/2	G1/4 - 1/4" NPT


part no. 51_52.00.36_LT

Temperature	Version	Type	Function	Connection
-30°C ... +50°C	Electric control	Solenoid-Differential	5/2	G1/4 - 1/4" NPT


part no. 51_52.00.39_LT

Temperature	Version	Type	Function	Connection
-30°C ... +50°C	Electric control	Solenoid-spring	5/2	G1/4 - 1/4" NPT



Direct operated valves and solenoid valves

SERIES M (MECHANICS)



part no. M2_LT				
Temperature	Version	Type	Function	Connection
-30°C ... +50°C	N.C.	Mechanical actuator for miniature solenoid valve	3/2	-



part no. M2/1LT				
Temperature	Version	Type	Function	Connection
-30°C ... +50°C	N.O.	Mechanical actuator for miniature solenoid valve	3/2	-



part no. MM7LT				
Temperature	Version	Type	Function	Connection
-30°C ... +50°C	N.O.	Mechanical actuator for miniature solenoid valve	3/2	-



part no. M2_LT				
Temperature	Version	Type	Function	Connection
-30°C ... +50°C	N.C.	Miniature solenoid valve Normally Closed	3/2	-



part no. M2/1_LT				
Temperature	Version	Type	Function	Connection
-30°C ... +50°C	N.O.	Miniature solenoid valve Normally Open	3/2	-



part no. 3_5.M1LT				
Temperature	Version	Type	Function	Connection
-30°C ... +50°C	N.C.	Mechanical actuator for miniature solenoid valve	3/2	Ø4 - M5 G1/8



part no. 3_5.M1/1LT				
Temperature	Version	Type	Function	Connection
-30°C ... +50°C	N.O.	Mechanical actuator for miniature solenoid valve	3/2	Ø4 - M5 G1/8



part no. 3_5_LT				
Temperature	Version	Type	Function	Connection
-30°C ... +50°C	N.C.	Miniature solenoid valve	3/2	Ø4 - M5 G1/8



part no. 3_5.M_/1LT				
Temperature	Version	Type	Function	Connection
-30°C ... +50°C	N.O.	Miniature solenoid valve	3/2	Ø4 - M5 G1/8

Air treatment

Air Service Units

SERIES AIRPLUS

	part no. P17_F ... T L17_F ... T				
	Temperature	Version	Function	Size	Connection
	-30°C ... +80°C (P) -40°C ... +80°C (L)	Aluminum	Filters	2 - 3 - 4	G3/8 - G1/2 - G1 1/4" NPT 1/2" NPT - 1" NPT
	part no. P17_DA ... T L17_DA ... T				
	Temperature	Version	Function	Size	Connection
	-30°C ... +80°C (P) -40°C ... +80°C (L)	Aluminum	Coalescing filters	2 - 3 - 4	G3/8 - G1/2 - G1
	part no. P17_DD ... T L17_DD ... T				
	Temperature	Version	Function	Size	Connection
	-30°C ... +80°C (P) -40°C ... +80°C (L)	Aluminum	Carbon filters	3 - 4	G1/2 - G1
	part no. P17_E ... T L17_E ... T				
	Temperature	Version	Function	Size	Connection
	-30°C ... +80°C (P) -40°C ... +80°C (L)	Aluminum	Filter regulators	2 - 3 - 4	G3/8 - G1/2 - G1 1/4" NPT 1/2" NPT - 1" NPT
	part no. P17_R ... L17_R ...				
	Temperature	Version	Function	Size	Connection
	-30°C ... +80°C (P) -40°C ... +80°C (L)	Aluminum	Regulators	2 - 3 - 4	G3/8 - G1/2 - G1 1/4" NPT 1/2" NPT - 1" NPT
	part no. P174_R ... P				
	Temperature	Version	Function	Size	Connection
	-30°C ... +80°C (P)	Aluminum	Piloted pressure regulators	4	G1 - 1" NPT
	part no. P17_VL L17_VL				
	Temperature	Version	Function	Size	Connection
	-30°C ... +80°C (P) -40°C ... +80°C (L)	Aluminum	Shut off valves	2 - 3 - 4	G3/8 - G1/2 - G1
	part no. P17_VP L17_VP				
	Temperature	Version	Function	Size	Connection
	-30°C ... +80°C (P) -40°C ... +80°C (L)	Aluminum	Shut off valves	2 - 3 - 4	G3/8 - G1/2 - G1
	part no. P174BPA				
	Temperature	Version	Function	Size	Connection
	-30°C ... +80°C (P)	Aluminum	Air intake	4	G1
	part no. P17_P_				
	Temperature	Version	Function	Size	Connection
	-30°C ... +80°C (P)	Aluminum	Air intake with pressure gauge integrated	2 - 3 - 4	G3/8 - G1/2 - G1



SERIES 1700 STEEL LINE



part no. S_17_F_ S_17_F_L_ S_17_F_Z_ S_17_F_Z_EF				
Temperature	Version	Function	Size	Connection
-30°C ... +80°C (Standard version)	Stainless steel	Filters	2 - 3 - 4	G1/4
-40°C ... +100°C (EF version)				G1/2
-50°C ... +80°C (Low temperature version L)				G1
-60°C ... +80°C (Low temperature version -60°C Z)				1/4" NPT
				3/8" NPT
				1/2" NPT
				3/4" NPT
				1" NPT



part no. S_17_R_ S_17_R_L_ S_17_R_Z_ S_17_R_EF				
Temperature	Version	Function	Size	Connection
-30°C ... +80°C (Standard version)	Stainless steel	Regulators	2 - 3 - 4	G1/4
-50°C ... +80°C (Low temperature version L)				G1/2
-60°C ... +80°C (Low temperature version -60°C Z)				G1
-40°C ... +100°C (EF version)				1/4" NPT
				3/8" NPT
				1/2" NPT
				3/4" NPT
				1" NPT



part no. S_17_E_ S_17_E_L_ S_17_E_Z_ S_17_E_EF				
Temperature	Version	Function	Size	Connection
-30°C ... +80°C (Standard version)	Stainless steel	Filter regulators	2 - 3 - 4	G1/4
-50°C ... +80°C (Low temperature version L)				G1/2
-60°C ... +80°C (Low temperature version -60°C Z)				G1
-40°C ... +100°C (EF version)				1/4" NPT
				3/8" NPT
				1/2" NPT
				3/4" NPT
				1" NPT

Volume Booster

SERIES FLOWPLUS






part no. S_17_VB_ S_17_VB_L_ S_17_VB_Z_ S_17_VB_EF				
Temperature	Version	Type	Size	Connection
-30°C ... +80°C (Standard version)	Stainless steel / Aluminum	Volume booster	3 - 4	1/4" NPT
-50°C ... +80°C (Low temperature version L)				1/2" NPT
-60°C ... +80°C (Low temperature version -60°C Z)				3/4" NPT
-40°C ... +100°C (EF version)				1" NPT

Pneumatic actuation

Cylinders with piston rod according to standard

Cylinders according to standard ISO 15552

SERIES ECOLIGHT

	part no. 1390._stroke.01L 1391._stroke.01L 1392._stroke.01L				
	Temperature	Version	Type	Bore	Stroke (mm)
	-50°C ... +80°C	Seals in special PUR	Basic version "01"	Ø32 ... Ø100	0 ... 2800
	part no. 1390._stroke.02L 1391._stroke.02L 1392._stroke.02L				
	Temperature	Version	Type	Bore	Stroke (mm)
	-50°C ... +80°C	Seals in special PUR	Through rod cylinder version "02"	Ø32 ... Ø100	0 ... 2800
	part no. 1390._stroke.GL 1391._stroke.GL 1392._stroke.GL				
	Temperature	Version	Type	Bore	Stroke (mm)
	-50°C ... +80°C	Seals in special PUR	Tandem push with common rods "G"	Ø32 ... Ø100	0 ... 2800
	part no. 1390._stroke.stroke1.FL 1391._stroke.stroke1.FL 1392._stroke.stroke1.FL				
	Temperature	Version	Type	Bore	Stroke (mm)
	-50°C ... +80°C	Seals in special PUR	Tandem push with independent rods "F"	Ø32 ... Ø100	0 ... 2800
	part no. 1390._stroke.stroke1.DL 1391._stroke.stroke1.DL 1392._stroke.stroke1.DL				
	Temperature	Version	Type	Bore	Stroke (mm)
	-50°C ... +80°C	Seals in special PUR	Opposed tandem with common rod "D"	Ø32 ... Ø100	0 ... 2800
	part no. 1390._stroke.stroke1.EL 1391._stroke.stroke1.EL 1392._stroke.stroke1.EL				
	Temperature	Version	Type	Bore	Stroke (mm)
	-50°C ... +80°C	Seals in special PUR	Tandem with opposed rods "E"	Ø32 ... Ø100	0 ... 2800



PNEUMAX

PNEUMAX S.p.A.

Via Cascina Barbellina, 10

24050 Lurano (BG) - Italy

P. +39 035 41 92 777

info@pneumaxspa.com

www.pneumaxspa.com