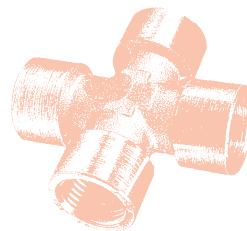
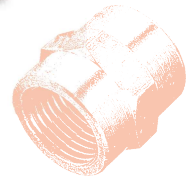


STANDARD 100/200/300



BREVE DESCRIZIONE

I raccordi di linea della nostra serie **100**, sono realizzati in Italia, a garanzia di elevati standard di qualità, secondo le normative ISO di riferimento, e rispondono alle seguenti specifiche tecniche e applicative.

SHORT DESCRIPTION



The standard 100 series fittings are produced in Italy according to the reference ISO norms as warranty of high quality level and answer to the followings technical specifications and applications.

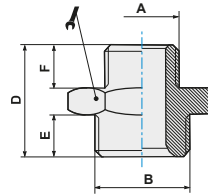
SCHEDA TECNICA TECHNICAL SHEET

FLUIDI UTILIZZABILI <i>EMPLOYABLE FLUIDS</i>		Aria compressa, acqua fino 100 °C (per altri fluidi contattare il nostro UT) <i>Compressed air, water up to 100 °C</i> <i>(for different fluid pls contact our Technical Dept.)</i>
APPLICAZIONI <i>APPLICATIONS</i>		Circuiti pneumatici, oleodinamici e idraulici. <i>Pneumatic, oleodynamic and hydraulic circuits.</i>
TEMPERATURE E PRESSIONI <i>TEMPERATURES AND PRESSURES</i>		Le temperature e le pressioni dipendono generalmente dalle caratteristiche del tubo impiegato. La pressione massima consigliata è 60 bar. <i>Temperatures and pressures usually depend by the technical features of the employed tubes. Max pressure suggested 60 bar.</i>
FILETTATURE <i>THREAD TYPE</i>		BSP cilindrica UNI-ISO 228; BSP conica UNI-ISO 7; Metrica ISO/R 262. <i>BSP parallell UNI-ISO 228; BSP tapered UNI-ISO 7; Metric ISO/R 262</i>
MATERIALI <i>MATERIALS</i>	corpi <i>bodies</i>	Ottone UNI EN 12164 CW614N (barra); UNI EN 12165 CW617N (stampato) <i>Brass UNI EN 12164 CW614N (bar); UNI EN 12165 CW617N (molded)</i>
	guarnizioni tenuta <i>seals</i>	NBR 70 DWGV-EN549 UL157 <i>NBR 70 DWGV-EN549 UL157</i>
	rondelle <i>washers</i>	Nylon/Alluminio <i>Aluminium/Nylon</i>



ART. 101

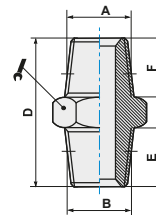
 Nipplo cilindrico
Parallel nipple

CODICE	A	B	D	E	F		
101M5M5	M5	M5	11,5	4	4	8	100
101M518	M5	G1/8	14,5	6	4	14	100
1011818	G1/8	G1/8	16,5	6	6	14	100
1011814	G1/8	G1/4	19,0	8	6	17	100
1011838	G1/8	G3/8	20,0	9	6	19	100
1011414	G1/4	G1/4	21,0	8	8	17	100
1011438	G1/4	G3/8	22,0	9	8	19	100
1011412	G1/4	G1/2	23,5	10	8	24	100
1013838	G3/8	G3/8	23,0	9	9	19	50
1013812	G3/8	G1/2	24,5	10	9	24	50
1011212	G1/2	G1/2	25,5	10	10	24	50
1011234	G1/2	G3/4	27,5	11	10	30	25
1013434	G3/4	G3/4	28,5	11	11	30	25


ART. 102

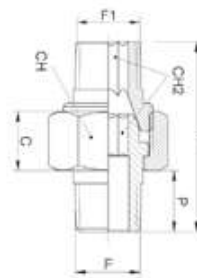
 Nipplo conico
Taper nipple

CODICE	A	B	D	E	F		
1021818	G1/8	G1/8	20,0	8,0	8,0	12	100
1021814	G1/8	G1/4	24,0	11,0	8,0	14	100
1021838	G1/8	G3/8	24,5	11,5	8,0	17	100
1021812	G1/8	G1/2	27,5	14,0	8,0	22	50
1021414	G1/4	G1/4	27,0	11,0	11,0	14	100
1021438	G1/4	G3/8	27,5	11,5	11,0	17	100
1021412	G1/4	G1/2	30,5	14,0	11,0	22	50
1023838	G3/8	G3/8	28,0	11,5	11,5	17	100
1023812	G3/8	G1/2	31,0	14,0	11,5	22	50
1021212	G1/2	G1/2	33,5	14,0	14,0	22	50
1021234	G1/2	G3/4	37,5	16,5	14,0	27	25
1023434	G3/4	G3/4	40,0	16,5	16,5	27	25
1023401	G3/4	G1'	42,5	19,0	16,5	34	10
1020101	G1'	G1'	45,0	19,0	19,0	34	10


ART. 102P3



 Nipplo conico 3 pezzi
Nipple (taper) - 3 pieces

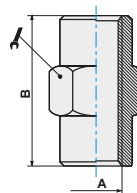
CODICE	F	F1	CH	CH2	P	L	C	Gr	
10218P3	1/8	1/8	15	5	9,0	27,0	8,6	18,5	50
10214P3	1/4	1/4	19	6	11,5	33,5	9,6	36,0	50
10238P3	3/8	3/8	22	8	13,0	36,0	10,0	66,0	50
10212P3	1/2	1/2	27	12	15,5	45,0	12,0	88,0	25
10234P3	3/4	3/4	36	14	18,0	53,0	17,0	200,0	25
10201P3	1"	1"	46	19	22,0	64,0	20,0	360,0	5
1021814P3	1/8	1/4	15	5	9,0	30,0	8,5	24,0	50
1021438P3	1/4	3/8	19	6	11,5	36,0	9,5	45,5	50
1023812P3	3/8	1/2	22	8	13,0	39,0	10,0	76,0	25



ART. 103



Manicotto filettato
Sleeve

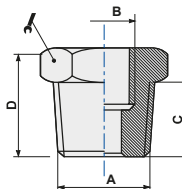
CODICE	A	B					
103M5	M5	11				8	100
10318	G1/8	15				14	100
10314	G1/4	22				17	100
10338	G3/8	23				22	50
10312	G1/2	30				26	25
10334	G3/4	32				32	10



ART. 104



Riduzione M/F conica
Taper reducer

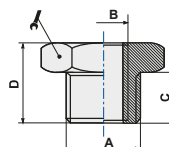
CODICE	A	B	C	D			
1041418	G1/4	G1/8	11,0	16,0		14	100
1043818	G3/8	G1/8	11,5	16,5		17	100
1041218	G1/2	G1/8	14,0	19,5		22	50
1043814	G3/8	G1/4	11,5	16,5		17	100
1041214	G1/2	G1/4	14,0	19,5		22	50
1041238	G1/2	G3/8	14,0	19,5		22	50
1043412	G3/4	G1/2	16,5	23,0		27	25
1043438	G3/4	G3/8	16,5	23,0		27	10
1040112	G1'	G1/2	17,0	25,0		34	10
1040134	G1'	G3/4	17,0	25,0		34	10



ART. 104Z

Riduzione M/F cilindrica
Parallel reducer

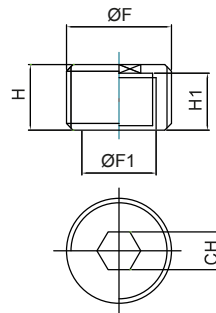
CODICE	A	B	C	D			
104Z18M5	G1/8	M5	6,0	10,5		14	100
104Z1418	G1/4	G1/8	8,0	13,0		17	100
104Z3818	G3/8	G1/8	9,0	14,0		19	100
104Z3814	G3/8	G1/4	9,0	14,0		19	100
104Z1218	G1/2	G1/8	10,0	15,5		24	50
104Z1214	G1/2	G1/4	10,0	15,5		24	50
104Z1238	G1/2	G3/8	10,0	15,5		24	50
104Z3412	G3/4	G1/2	12,5	18,0		30	25
104Z3438	G3/4	G3/8	12,5	18,0		30	10



ART. 104S

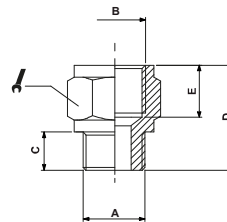
 Riduzione cilindrica a scomparsa
Disappearance parallel reducer

CODICE	F	F1	H	H1		
104S1418	1/4	1/8	8	7	6	50
104S3814	3/8	1/4	9	7	8	50
104S1238	1/2	3/8	10	9	10	25
104S3412	3/4	1/2	14	11	12	10
104S0134	1"	3/4	20	12,5	17	10


ART. 105

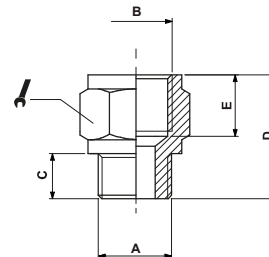
 Prolunga M/F conica
Taper M/F extension

CODICE	A	B	C	D	E		
1051818	G1/8	G1/8	8,0	18,0	8,0	14	100
1051814	G1/8	G1/4	8,0	21,5	11,0	17	100
1051838	G1/8	G3/8	8,0	22,5	11,5	22	50
1051414	G1/4	G1/4	11,0	24,5	11,0	17	100
1051438	G1/4	G3/8	11,0	24,5	11,5	22	50
1051412	G1/4	G1/2	11,0	29,0	14,0	24	50
1053838	G3/8	G3/8	11,5	26,0	11,5	22	50
1053812	G3/8	G1/2	11,5	29,5	14,0	24	25
1051212	G1/2	G1/2	14,0	32,0	14,0	26	25
1051234	G1/2	G3/4	14,0	35,0	16,5	32	10
1051201	G1/2	G1	14,0	37,0	18,0	38	10


ART. 105Z


 Prolunga M/F cilindrica
Parallel M/F extension

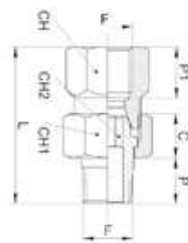
CODICE	A	B	C	D	E		
105ZM5M5	M5	M5	5	14,0	7,0	9	100
105ZM518	M5	G1/8	4	14,5	8,0	14	100
105ZM618	M6	G1/8	6	16,0	8,0	14	100
105Z1818	G1/8	G1/8	6	16,0	8,0	14	100
105Z1814	G1/8	G1/4	6	19,5	11,0	17	100
105Z1838	G1/8	G3/8	6	20,5	11,5	22	50
105Z1414	G1/4	G1/4	8	21,5	11,0	17	100
105Z1438	G1/4	G3/8	8	22,5	11,5	22	50
105Z1412	G1/4	G1/2	8	26,0	14,0	24	50
105Z3838	G3/8	G3/8	9	23,5	11,5	22	50
105Z3812	G3/8	G1/2	9	27,0	14,0	24	25
105Z1212	G1/2	G1/2	10	28,0	14,0	26	25
105Z1234	G1/2	G3/4	10	30,0	16,5	32	10



ART. 105P3



Prolunga M/F - 3 pezzi
Extension M/F - 3 pieces

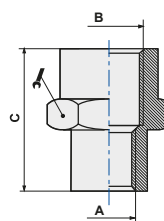
CODICE	F	CH	CH1	CH2	P	P1	L	C	Gr	
10518P3	1/8	14	15	5	9,0	10,0	30,5	8,5	19,0	50
10514P3	1/4	17	19	6	12,0	12,0	37,0	9,5	39,0	50
10538P3	3/8	21	22	8	12,0	12,0	40,0	10,0	68,0	25
10512P3	1/2	25	27	12	15,0	15,0	48,0	12,0	118,0	10



ART. 106

Manicotto riduzione
Reducing sleeve

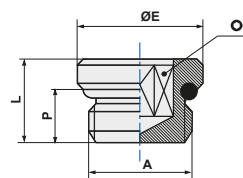
CODICE	A	B	C			
106M518	M5	G1/8	13,5		14	100
1061814	G1/8	G1/4	19,0		17	100
1061838	G1/8	G3/8	20,0		22	25
1061812	G1/8	G1/2	24,0		26	50
1061438	G1/4	G3/8	23,0		22	50
1061412	G1/4	G1/2	25,0		26	50
1063812	G3/8	G1/2	27,5		26	25
1061234	G1/2	G3/4	30,0		32	10



ART. 107

Tappo maschio cilindrico con O-Ring
Parallel male plug + O-Ring

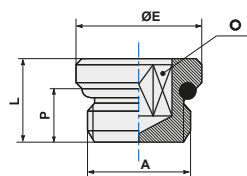
CODICE	A	P	L	ØE			
107M5	M5	4,0	5,5	8		2,5	100
10718	G1/8	5,5	7,5	14		4,0	100
10714	G1/4	6,5	8,5	17		6,0	100
10738	G3/8	7,5	10,5	20		8,0	100
10712	G1/2	9,0	12,0	24		10,0	50
10734	G3/4	15,0	20,0	32		12,0	10



ART. 107P

Tappo maschio cilindrico con OR (Tecnopolimero)
Parallel male plug + OR (Technopolymer)

CODICE	A	P	L	ØE	Nm		
107P18	G1/8	5,3	8,2	14	1,2*	4	100
107P14	G1/4	6,5	9,2	18	1,5*	6	100

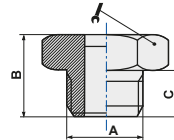


(*) = coppie di serraggio *tightening torque*

ART. 107Z

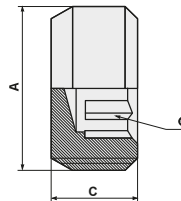
 Tappo maschio cilindrico
Parallel male plug

CODICE	A	B	C				
107Z18	G1/8	10,5	6			14	100
107Z14	G1/4	13,0	8			17	100
107Z38	G3/8	14,0	9			19	50
107Z12	G1/2	15,5	10			24	50
107Z34	G3/4	16,5	11			30	25
107Z01	G1"	19,0	13			38	10


ART. E100

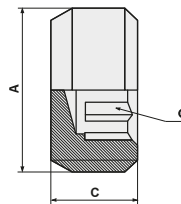
 Tappo a scomparsa conico
Disappearance tapered plug

CODICE	A		C				
E10018	G1/8		8			5	100
E10018L5	G1/8		5			5	100
E10014	G1/4		10			6	100
E10038	G3/8		11			8	50
E10012	G1/2		13			10	50


ART. E200

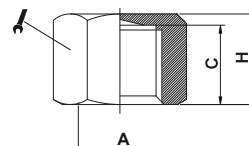
 Tappo a scomparsa cilindrico
Disappearance parallel plug

CODICE	A		C				
E20018	G1/8		8			5	100
E20014	G1/4		10			6	100
E20038	G3/8		11			8	50
E20012	G1/2		13			10	50


ART. 108



 Tappo femmina
Female plug

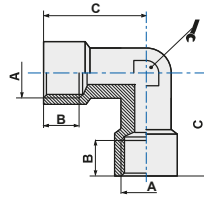
CODICE	A			C	H			
10818	G1/8			8,0	10,0		14	100
10814	G1/4			11,0	13,5		17	100
10838	G3/8			11,5	14,0		20	50
10812	G1/2			14,0	16,5		24	50



ART. 109



 Elle F.F.
 Female L

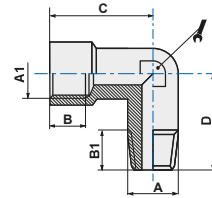
CODICE	A	B	C				
10918	G1/8	7	20,0			10	100
10914	G1/4	8	25,5			13	50
10938	G3/8	10	29,0			17	25
10912	G1/2	11	35,0			20	10
10934	G3/4	16	36,0			25	5
10901	G1'	19	44,0			30	5



ART. 110



 Elle M.F.
 Male-Female L

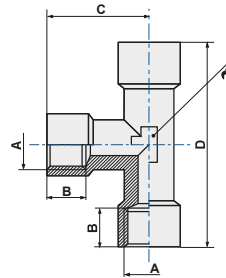
CODICE	A	A1	B	B1	C	D		
110M5	M5	M5	4		11,0	11,5	9	100
11018	G1/8	G1/8	7	8	20,0	19,0	10	50
11014	G1/4	G1/4	8	11	25,5	24,0	13	50
11038	G3/8	G3/8	10	11,5	29,0	26,5	17	25
11012	G1/2	G1/2	11	14	35,0	31,5	20	20
11034	G3/4	G3/4	16	16	35,0	34,5	25	10
11001	G1'	G1'	19	16	44,0	51,0	30	5
11014F18M	G1/8	G1/4	8	8	25,5	23,0	13	50



ART. 111



 T F.F.F.
 Female T

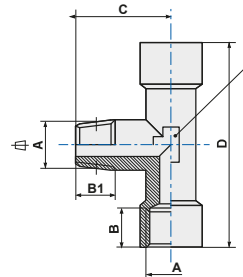
CODICE	A	B	C	D			
11118	G1/8	7	20,0	40		10	50
11114	G1/4	8	25,5	51		13	25
11138	G3/8	10	29,0	58		17	10
11112	G1/2	11	35,0	70		20	10
11134	G3/4	16	31,0	73		25	5
11101	G1'	19	49,5	90		30	5



ART. 112

 T F.M.F.
 Centre male T

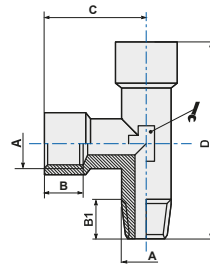
CODICE	A	B	B1	C	D		
11218	G1/8	7	8,0	19,0	40	10	50
11214	G1/4	8	11,0	24,0	51	13	25
11238	G3/8	10	13,6	26,5	58	17	25
11212	G1/2	11	15,5	31,5	72	20	10
11234	G3/4	16	15,0	31,0	73	25	5
11201	G1'	19	16,0	38,0	90	30	5



ART. 113

 T M.F.F.
 Off-set male T

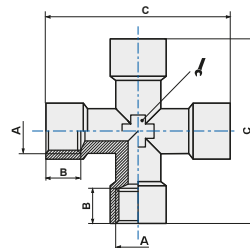
CODICE	A	B	B1	C	D		
11318	G1/8	7	8,0	20,0	39,0	10	50
11314	G1/4	8	11,0	25,5	49,5	13	25
11338	G3/8	10	13,6	29,0	55,5	17	25
11312	G1/2	11	15,5	35,0	65,0	20	10
11334	G3/4	16	15,0	31,0	67,0	25	5
11301	G1"	19	16,0	44,0	84,0	30	5



ART. 114

 Croce F.F.F.F.
 Female cross

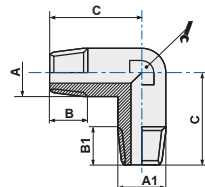
CODICE	A	B	C				
11418	G1/8	7	40			10	25
11414	G1/4	8	51			13	25
11438	G3/8	10	58			17	10
11412	G1/2	11	72			20	5



ART. 115

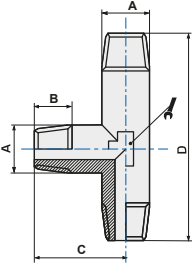
 Elle M.M.
 Male L

CODICE	A	B	C	A1	B1		
11518	G1/8	8,0	19,0	G1/8	8,0	10	100
11514	G1/4	12,5	24,0	G1/4	12,5	13	50
11538	G3/8	13,6	26,5	G3/8	26,5	17	25
11512	G1/2	15,5	31,5	G1/2	15,5	20	25
11534	G3/4	15,0	35,5	G3/4	15,0	25	5
11501	G1"	16,0	51,0	G1"	51,0	30	5
1151814	G1/8	8,0	22,0	G1/4	12,5	13	100



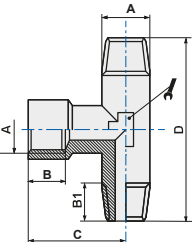
ART. 116 T M.M.M.
Male T

CODICE	A	B	C	D		
11618	G1/8	8,0	19,0	38	10	100
11614	G1/4	12,5	24,0	48	13	50
11638	G3/8	13,6	26,5	53	17	25
11612	G1/2	15,5	31,5	63	20	10
11634	G3/4	15,0	35,5	66	25	5
11601	G1"	16,0	40,5	78	30	5



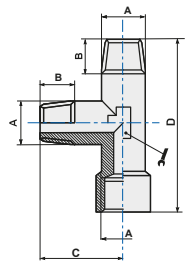
ART. 117 T M.F.M.
Centre female T

CODICE	A	B	B1	C	D		
11718	G1/8	7	8,0	20,0	38	10	100
11714	G1/4	8	12,5	25,5	48	13	50
11738	G3/8	10	13,6	29,0	53	17	25
11712	G1/2	11	15,5	36,0	63	17	10
11734	G3/4	16	15,0	34,5	66	25	5
11701	G1"	19	16,0	46,5	78	30	5



ART. 118 T M.M.F.
Off-set female T

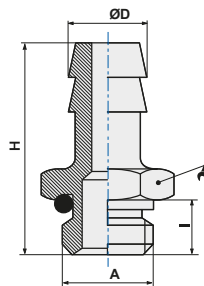
CODICE	A	B	C	D		
11818	G1/8	8,0	19,0	39,0	10	100
11814	G1/4	12,5	24,0	49,5	13	50
11838	G3/8	13,6	26,5	55,5	17	25
11812	G1/2	15,5	31,5	67,5	20	10
11834	G3/4	15,0	34,5	69,0	25	5
11801	G1"	16,0	38,0	84,0	30	5



ART. 119

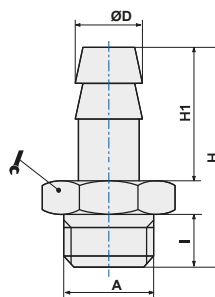
 Portagomma maschio con O-Ring
Male hose adapter + O-Ring

CODICE	ØD	A	I	H	Ød		
11945M5	4,5	M5	4	31,5	2,2	11	100
1190718	7	G1/8	6	31,5	4	13	100
1190714	7	G1/4	8	34,0	4	16	100
1190818	8	G1/8	6	31,5	5,30	13	100
1190918	9	G1/8	6	31,5	5,5	13	100
1190914	9	G1/4	8	34,0	5,5	16	100
1190938	9	G3/8	9	35,0	5,5	17	50
1191014	10	G1/4	8	34,0	6	16	50
1191038	10	G3/8	9	35,0	6	17	50
1191214	12	G1/4	8	34,0	8	16	50
1191238	12	G3/8	9	36,0	8	17	50
1191212	12	G1/2	11	37,0	8	22	50
1191738	17	G3/8	9	36,0	11	17	50
1191712	17	G1/2	11	37,0	12	22	50


ART. 119Z



 Portagomma maschio cilindrico
Male hose adapter

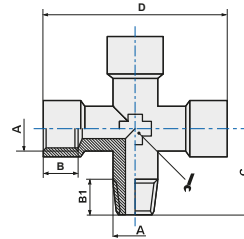
CODICE	ØD	A	I	H	H1	Ød		
119Z04M5	4,5	M5	4	22,5	15,0	2	8	100
119Z0618	6	G1/8	6	29,5	19,0	3	12	100
119Z0614	6	G1/4	8	32,0	19,0	3	14	100
119Z0718	7	G1/8	6	29,5	19,0	4	12	100
119Z0714	7	G1/4	8	32,0	19,0	4	14	100
119Z0818	8	G1/8	6	29,5	19,0	5	12	100
119Z0814	8	G1/4	8	32,0	19,0	5	14	100
119Z0838	8	G3/8	9	33,0	19,0	5	19	100
119Z0918	9	G1/8	6	29,5	19,0	6	12	100
119Z0914	9	G1/4	8	32,0	19,0	6	14	100
119Z0938	9	G3/8	9	33,0	19,0	6	19	100
119Z0912	9	G1/2	10	35,5	19,0	6	24	25
119Z1018	10	G1/8	6	30,5	20,0	7	12	100
119Z1014	10	G1/4	8	33,0	20,0	7	14	50
119Z1038	10	G3/8	9	34,0	20,0	7	19	100
119Z1012	10	G1/2	10	36,0	20,0	7	24	50
119Z1214	12	G1/4	8	33,0	20,0	9	14	50
119Z1238	12	G3/8	9	34,0	20,0	9	19	50
119Z1212	12	G1/2	10	35,5	20,0	9	22	50
119Z1414	14	G1/4	8	33,0	20,0	10	14	25
119Z1438	14	G3/8	9	36,0	22,0	10,5	19	50
119Z1412	14	G1/2	10	37,5	22,0	10,5	22	50
119Z1638	16	G3/8	9	38,0	24,0	12	19	50
119Z1612	16	G1/2	10	38,0	22,0	12,5	24	25
119Z1738	17	G3/8	9	38,0	24,0	13	19	50
119Z1712	17	G1/2	10	39,5	24,0	13	22	50
119Z2012	20	G1/2	10	39,5	24,0	14	24	25
119Z2034	20	G3/4	10	39,5	24,0	16	24	25



ART. 120



Croce M.F.F.F.
1 male 3 female cross

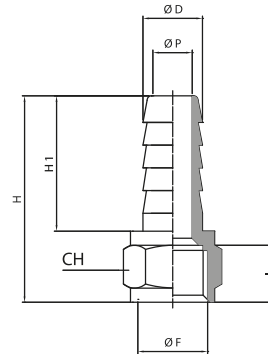
CODICE	A	B	B1	C	D		
12018	G1/8	7	8,0	19,0	40	10	25
12014	G1/4	8	12,5	24,0	51	13	25
12038	G3/8	10	13,6	26,5	58	17	10
12012	G1/2	11	15,5	31,5	72	20	5



ART. 122



Portagomma femmina
Female hose adapter

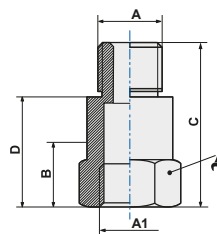
CODICE	ØD	F	Ød	I	H	H1		
1220618	6	G1/8	3,5	8	28,5	19	12	100
1220718	7	G1/8	4,5	8	28,5	19	12	100
1220714	7	G1/4	4,5	11	31,5	19	15	100
1220818	8	G1/8	5,5	8	28,5	19	12	100
1220814	8	G1/4	5,5	11	31,5	19	15	100
1220914	9	G1/4	6,5	11	31,5	19	15	100
1221014	10	G1/4	7,5	11	32,5	20	15	50
1221038	10	G3/8	7,5	11,5	33	20	19	25
1221238	12	G3/8	9,5	11,5	33	20	19	25
1221212	12	G1/2	9,5	14	36	20	24	10
1221438	14	G3/8	11	11,5	35	22	19	10
1221412	14	G1/2	11	14	38	22	24	10



ART. 123

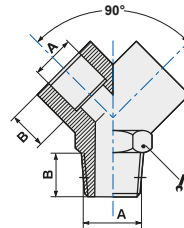
Prolunga
Extension

CODICE	A	A1	B	C	D		
12318L22	G1/8	G1/8	6	22	16	14	100
12318L32	G1/8	G1/8	6	32	26	14	100
12318L42	G1/8	G1/8	6	42	36	14	100
12318L51	G1/8	G1/8	6	51	45	14	50
12314L28	G1/4	G1/4	8	28	20	17	50
12314L35	G1/4	G1/4	8	35	27	17	50
12314L51	G1/4	G1/4	8	51	43	17	25

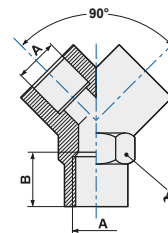


ART. 125 Y maschio
Male Y

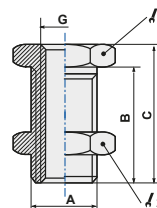
CODICE	A	B				
12518	G1/8	8,0			13	50
12514	G1/4	11,0			17	25
12538	G3/8	11,5			20	25
12512	G1/2	14,0			25	10


ART. 126 Y femmina
Female Y

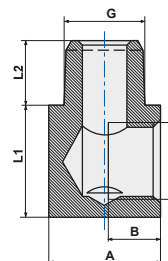
CODICE	A	B				
12618	G1/8	8			13	50
12614	G1/4	11			17	25
12638	G3/8	11			20	25
12612	G1/2	14			25	10


ART. 127 Passaparete femmina (nichelato)
Female bulkhead (nickel plated)

CODICE	G	A	B	C			
127M5	M5	M10x1,0	10,5	14	14	14	100
12718	G1/8	M16x1,5	14,0	18	22	19	50
12714	G1/4	M20x1,5	21,0	24	27	24	25
12738	G3/8	M26x1,5	21,0	26	32	30	25
12712	G1/2	M28x1,5	27,0	33	36	32	10


ART. RLB100 Raccordo ad "L" M/F conico
Male-female L tapered

CODICE	G	A	B	L1	L2	
RLB100M5	M5	9	4,5	9	4,5	100
RLB10018	1/8	14	6,5	14	8	100
RLB10014	1/4	18	9	18	10	100
RLB10038	3/8	19	11	19	11,5	50


ART. 412 Anello singolo femmina
Female single banjo body

CODICE	A	ØB	ØC	D	H	
41218	G1/8	9,9	14	20	15	50
41214	G1/4	13,3	18	24	17	50
41238	G3/8	16,8	21	28,5	20	25
41212	G1/2	21	26	34,524		

