

## 3/2 WAY DIRECT ACTING SOLENOID VALVE, G 1/8"

### COMMON FEATURES

Media<sup>①</sup>: water, oil, air  
 Media temperature: -10°C ÷ +130°C  
 Ambient temperature: -10°C ÷ +50°C  
 Body material: brass (CW719R EN 12165) low lead content  
 Orifice material: stainless steel (1.4305 EN 10088/AISI 303)  
 Operator material: stainless steel  
 Seal material: foodgrade FKM  
 Protection class: IP 65 (with connector and gasket)

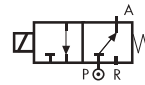
### OPTIONS

EPDM seal, temperature max. 120°C (e.g. code RB397CEC)  
 Electroless nickel plating treatment (e.g. code B397CVCK)

### NOTES

<sup>①</sup> Valve suitable for contact with food media as per the EEC Directives and Regulations. For more specific information, please contact M&M Sales Department.

### TYPE: SB397



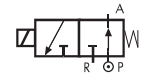
Normally Open

### TYPE: B397

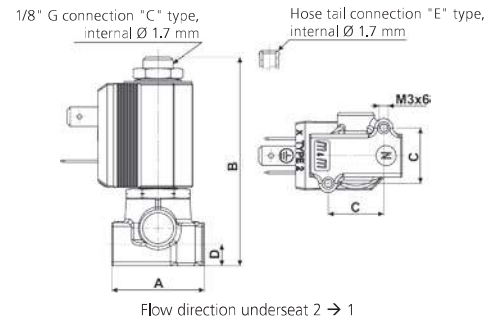


Normally Closed

### TYPE: RB397



Normally Open



DIMENSIONS & WEIGHTS		B397	RB397	SB397
<b>G connection</b>	[ISO 228]	1/8"	1/8"	1/8"
<b>A</b>	[mm]	30	30	30
<b>B</b>	[mm]	67.8	72.5	67.8
<b>C</b>	[mm]	18	18	18
<b>D</b>	[mm]	7	7	7
<b>weight</b>	[kg]	0,15	0,16	0,15

GENERAL PURPOSE

VALVE	nominal Ø	flow rate Kvs	OPD		
			min.	max. AC	max. DC
code	[mm]	[l/min]	[barg]	[barg]	[barg]
<b>B397CVA</b>	1.0	0.5	0	18	18
<b>B397CVB</b>	1.2	0.7	0	15	15
<b>B397CVC</b>	1.5	1.0	0	10	10
<b>B397CVE</b>	2.0	1.9	0	5	5
<b>B397CVH</b>	3.0	3.5	0	2	2

COILS	
code	[Volts/Hz]
2250	24v DC
2200	24v 50/60Hz
2400	110v 50Hz - 120v 60Hz
2600	200v 50Hz - 220v 60Hz
2700	230v 50Hz - 240v 60Hz

**B397 - FKM seal, NC**  
 Coil power: AC 10va (holding)  
 AC 16va (inrush)  
 DC 7w  
**OPTIONS**  
 Manual override (e.g. code B397CVBM)  
 Armature tube with hose tail Ø 6 mm (e.g. code B397EVE)  
 UL approved coils (e.g. code 270R)

AUTOMATION

VALVE	nominal Ø		flow rate Kvs	OPD		
	1 → 2	1 → 3		min.	max. AC	max. DC
code	[mm]	[mm]	[l/min]	[barg]	[barg]	[barg]
<b>SB397CVB</b>	1.2	1.7	0.7	0	6	3
<b>SB397CVC</b>	1.5	1.7	1.0	0	4,5	2

COILS	
code	[Volts/Hz]
2250	24v DC
2200	24v 50/60Hz
2400	110v 50Hz - 120v 60Hz
2600	200v 50Hz - 220v 60Hz
2700	230v 50Hz - 240v 60Hz

**SB397 - FKM seal, 2<sup>nd</sup> SERVICE -**  
 Coil power: AC 10va (holding)  
 AC 16va (inrush)  
 DC 7w  
**OPTIONS**  
 Manual override (e.g. code SB397CVCM).  
**NOTES**  
 Flow direction: OFF 3 → 1 - ON 1 → 2

AUTOMATION

VALVE	nominal Ø	flow rate Kvs	OPD		
			min.	max. AC	max. DC
code	[mm]	[l/min]	[barg]	[barg]	[barg]
<b>RB397CVA</b>	1.0	0.5	0	15	12
<b>RB397CVB</b>	1.2	0.7	0	15	12
<b>RB397CVC</b>	1.5	1.0	0	10	8
<b>RB397CVE</b>	2.0	1.9	0	8	6
<b>RB397CVG</b>	2.5	2.5	0	4	4
<b>RB397CVH</b>	3.0	3.5	0	3,5	3,5

COILS	
code	[Volts/Hz]
2250	24v DC
2200	24v 50/60Hz
2400	110v 50Hz - 120v 60Hz
2600	200v 50Hz - 220v 60Hz
2700	230v 50Hz - 240v 60Hz

**RB397 - FKM seal, NO**  
 Coil power: AC 10va (holding)  
 AC 16va (inrush)  
 DC 7w