

## 2/2 WAY PILOT OPERATED SOLENOID VALVE, G 1 1/4" ÷ G 2"

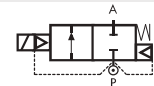
### COMMON FEATURES

Media: water, oil, air  
 Media temperature: -10°C ÷ +90°C  
 Ambient temperature: -10°C ÷ +50°C  
 Body material: brass (CW617N EN 12165)  
 Operator material: stainless steel  
 Operator seal and diaphragm material: NBR  
 Silver shading ring as standard  
 Protection class: IP 65 (with connector and gasket)  
 Speed control screw as standard

### OPTIONS

FKM seal, temperature max. 130°C (e.g. code D223DV $\underline{K}$ )  
 EPDM seal, temperature max. 120°C (e.g. code RD223DE $\underline{K}$ )  
 Electroless nickel plating treatment (e.g. code D222DV $\underline{YK}$ )  
 NPT connection on request, minimum batch may be required (e.g. code D223DB $\underline{KN}$ )

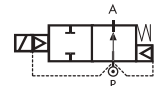
### TYPE: D223÷D225



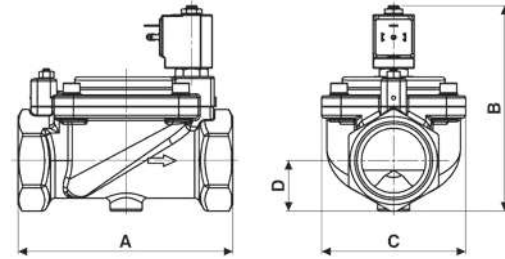
Normally Closed



### TYPE: RD223÷RD225



Normally Open



Flow direction overseat 1 → 2

DIMENSIONS & WEIGHTS		D223	D224	D225	RD223	RD224	RD225
<b>G connection</b>	[ISO 228]	1 1/4"	1 1/2"	2"	1 1/4"	1 1/2"	2"
<b>A</b>	[mm]	140	140	168	140	140	168
<b>B</b>	[mm]	140	140	158	140	140	158
<b>C</b>	[mm]	96	96	112	96	96	112
<b>D</b>	[mm]	31	31	39	31	31	39
<b>weight</b>	[kg]	2.8	2.8	3.9	2.8	2.8	3.9

GENERAL PURPOSE

VALVE	nominal Ø	flow rate Kvs	OPD			COILS	
			min.	max. AC	max. DC	code	[Volts/Hz]
code	[mm]	[l/min]	[barg]	[barg]	[barg]	code	[Volts/Hz]
<b>D223DBK</b>	40	370	0.5	16	16	7250	24v DC
<b>D224DBK</b>	40	400	0.5	16	16	7200	24v 50/60Hz
<b>D225DBJ</b>	50	540	0.5	16	16	7400	110v 50Hz - 120v 60Hz
						7600	200v 50Hz - 220v 60Hz
						7700	230v 50Hz - 240v 60Hz

### D223/224/225 - NBR seal, NC -

Coil power: AC 18va (holding)  
 AC 36va (inrush)  
 DC 14w

### OPTIONS

**M** Manual override (e.g. code D223DB $\underline{KM}$ )  
 For vacuum see page 36  
**UL** approved coils (e.g. code 725R)

GENERAL PURPOSE

VALVE	nominal Ø	flow rate Kvs	OPD			COILS	
			min.	max. AC	max. DC	code	[Volts/Hz]
code	[mm]	[l/min]	[barg]	[barg]	[barg]	code	[Volts/Hz]
<b>RD223DBK</b>	40	370	0.5	16	16	7251	24v DC
<b>RD224DBK</b>	40	400	0.5	16	16	7201	24v 50/60Hz
<b>RD225DBJ</b>	50	540	0.5	16	16	7401	110v 50Hz - 120v 60Hz
						7601	200v 50Hz - 220v 60Hz
						7701	230v 50Hz - 240v 60Hz

### D223/224/225 - NBR seal, NO -

Coil power: AC 18va (holding)  
 AC 36va (inrush)  
 DC 14w

