

## 2/2 WAY PILOT OPERATED SOLENOID VALVE, G 3/4" - G 1"

### COMMON FEATURES

Media<sup>Ⓢ</sup>: steam  
 Media temperature: +80°C  $\ominus$  +180°C  
 Ambient temperature: -10°C  $\div$  +70°C  
 Body material: brass (CW617N EN 12165)  
 Operator material: stainless steel  
 Orifice material: stainless steel (1.4305 EN 10088/AISI 303)  
 Operator seal material: PTFE  
 Main seal and diaphragm material: PTFE  
 Protection class: IP 65 (with connector and gasket)

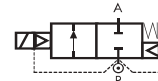
### OPTIONS

NPT connection on request, minimum batch may be required (e.g. code D622DTYN)

### NOTES

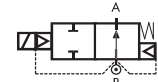
- Ⓢ Water & high content of condensate can damage the diaphragm.
- Ⓢ For a correct functioning, the minimum working temperature of the solenoid valve cannot be below 80°C.

### TYPE: D606/622

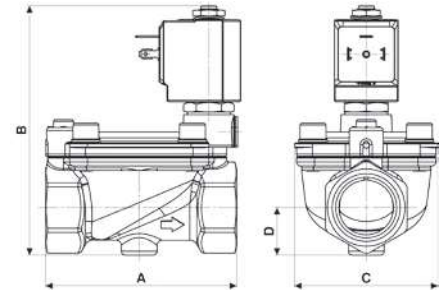


Normally Closed

### TYPE: RD606/622



Normally Open



Flow direction overseat 1 → 2

DIMENSIONS & WEIGHTS		D606 RD606	D622 RD622
G connection	[ISO 228]	3/4"	1"
A	[mm]	96	96
B	[mm]	126	126
C	[mm]	72	72
D	[mm]	24	24
weight	[kg]	1,3	1,3

VALVE	nominal $\varnothing$	flow rate Kvs	OPD			COILS class 'H' only	
			min.	max. AC	max. DC	code	[Volts/Hz]
code	[mm]	[l/min]	[barg]	[barg]	[barg]	code	[Volts/Hz]
D606DTY	24	120	1	9	9	7151	12v DC
D622DTY	24	120	1	9	9	7251	24v DC
						7201	24v 50/60Hz
						7401	110v 50Hz - 120v 60Hz
						7601	200v 50Hz - 220v 60Hz
						7701	230v 50Hz - 240v 60Hz

### D606/D622 - PTFE seal, NC -

Coil power: AC 18va (holding)  
 AC 36va (inrush)  
 DC 14w

### NOTES

Seamless tube as standard

STEAM

VALVE	nominal $\varnothing$	flow rate Kvs	OPD			COILS class 'H' only	
			min.	max. AC	max. DC	code	[Volts/Hz]
code	[mm]	[l/min]	[barg]	[barg]	[barg]	code	[Volts/Hz]
RD606DTY	24	120	1	9	9	7151	12v DC
RD622DTY	24	120	1	9	9	7251	24v DC
						7201	24v 50/60Hz
						7401	110v 50Hz - 120v 60Hz
						7601	200v 50Hz - 220v 60Hz
						7701	230v 50Hz - 240v 60Hz

### RD606/RD622 - PTFE seal, NO -

Coil power: AC 18va (holding)  
 AC 36va (inrush)  
 DC 14w

STEAM

