

2/2 WAY PILOT OPERATED SOLENOID VALVE, G 1/4" ÷ G 1/2"

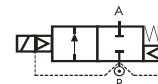
COMMON FEATURES

- Body material: brass (CW617N EN 12165)
- Orifice material: stainless steel (1.4305 EN 10088/AISI 303)
- Operator material: stainless steel
- Seal material: PTFE
- Protection class: IP 65 (with connector and gasket)

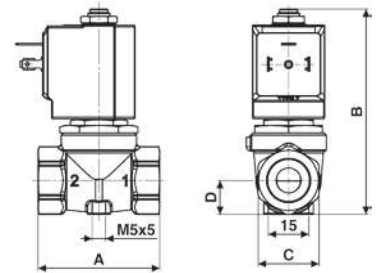
NOTES

Seamless tube as standard

TYPE: D634÷D636



Normally Closed



Flow direction overseat 1 → 2

| DIMENSIONS & WEIGHTS | | D634 | D635 | D636 |
|----------------------|-----------|--------|--------|--------|
| G connection | [ISO 228] | 1/4" | 3/8" | 1/2" |
| A | [mm] | 54 | 54 | 54 |
| B | [mm] | 100 | 100 | 100 |
| C | [mm] | Hex 27 | Hex 27 | Hex 27 |
| D | [mm] | 15 | 15 | 15 |
| weight | [kg] | 0,5 | 0,45 | 0,45 |

| VALVE | nominal Ø | flow rate Kvs | OPD | | | COILS high power - class 'H' only | |
|----------|-----------|---------------|--------|---------|---------|-----------------------------------|-----------------------|
| | | | min. | max. AC | max. DC | code | [Volts/Hz] |
| code | [mm] | [l/min] | [barg] | [barg] | [barg] | code | [Volts/Hz] |
| D634DTT1 | 10 | 21 | 0.3 | 140 | 35 | 72Z1 | 24v DC |
| D635DTT1 | 10 | 24 | 0.3 | 140 | 35 | 72K1 | 24v 50/60Hz |
| D636DTT1 | 10 | 25 | 0.3 | 140 | 35 | 74K1 | 110v 50Hz - 120v 60Hz |
| | | | | | | 77K1 | 230v 50Hz - 240v 60Hz |

ATTENTION: When high pressure valves are supplied without a coil, their nameplates display the max. OPD of the valve when equipped with an AC (25va) and DC (22w) coil (as shown in the table above).

When using alternative coil power ratings please ensure to request separately the appropriate nameplate at time of order.

D634÷636DTT1 - PTFE seal, NC -

- Media¹: water, oil, liquids
- Media temperature: -10°C ÷ +130°C
- Ambient temperature: -10°C ÷ +50°C
- Coil power: AC 25va (holding)
- AC 50va (inrush)
- DC 22w

NOTES

- ¹ Not 100% leak-proof when used with air/gases. Approximate leak rate is 1,5 ml/min at max. OPD

| VALVE | nominal Ø | flow rate Kvs | OPD | | | COILS class 'H' only | |
|---------|-----------|---------------|--------|---------|---------|----------------------|-----------------------|
| | | | min. | max. AC | max. DC | code | [Volts/Hz] |
| code | [mm] | [l/min] | [barg] | [barg] | [barg] | code | [Volts/Hz] |
| D634DTT | 10 | 21 | 0.3 | 9 | 9 | 72Z1 | 24v DC |
| D635DTT | 10 | 24 | 0.3 | 9 | 9 | 7201 | 24v 50/60Hz |
| D636DTT | 10 | 25 | 0.3 | 9 | 9 | 7401 | 110v 50Hz - 120v 60Hz |
| | | | | | | 7601 | 200v 50Hz - 220v 60Hz |
| | | | | | | 7701 | 230v 50Hz - 240v 60Hz |

D634÷636DTT - PTFE seal, NC -

- Media: steam
- Media temperature: +80°C ² ÷ +180°C
- Ambient temperature: -10°C ÷ +70°C
- Coil power: AC 18va (holding)
- AC 36va (inrush)
- DC 22w

NOTES

- ² For a correct functioning, the minimum working temperature of the solenoid valve cannot be below 80°C

