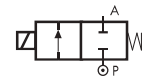


2/2 WAY DIRECT ACTING SOLENOID VALVE, G 1/8"

COMMON FEATURES

- Body material: stainless steel (1.4305 EN 10088/AISI 303)
- Orifice material: stainless steel (1.4305 EN 10088/AISI 303)
- Operator material: stainless steel
- Protection class: IP 65 (with connector and gasket)

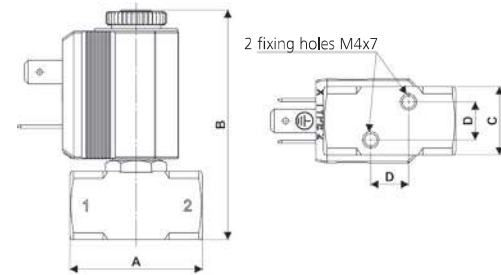
TYPE: B298



Normally Closed



DIMENSIONS & WEIGHTS		B298
G connection	[ISO 228]	1/8"
A	[mm]	35
B	[mm]	60.6
C	[mm]	18
D	[mm]	10
weight	[kg]	0,1



Flow direction overseat 1 → 2

GENERAL PURPOSE

VALVE	nominal Ø	flow rate Kvs	OPD			COILS	
			min.	max. AC	max. DC	code	[Volts/Hz]
code	[mm]	[l/min]	[barg]	[barg]	[barg]	code	[Volts/Hz]
B298DV \underline{C}	1.5	1.3	0	22	18	2250	24v DC
B298DV \underline{E}	2.0	1.9	0	18	8	2200	24v 50/60Hz
B298DV \underline{G}	2.5	2.7	0	13	2.5	2400	110v 50Hz - 120v 60Hz
B298DV \underline{H}	3.0	3.5	0	8	1	2600	200v 50Hz - 220v 60Hz
						2700	230v 50Hz - 240v 60Hz

B298 - FKM seal, NC -

- Media: water, oil, air and aggressive fluids
- Media temperature: -10°C ÷ +130°C
- Ambient temperature: -10°C ÷ +50°C
- Seal material: foodgrade FKM
- Coil power: AC 10v_A (holding)
AC 16v_A (inrush)
DC 7w

CHEMICAL INDUSTRY

VALVE	nominal Ø	flow rate Kvs	OPD			COILS	
			min.	max. AC	max. DC	code	[Volts/Hz]
code	[mm]	[l/min]	[barg]	[barg]	[barg]	code	[Volts/Hz]
B298DK \underline{C}	1.5	1.3	0	24	24	2250	24v DC
B298DK \underline{E}	2.0	1.9	0	18	15	2200	24v 50/60Hz
B298DK \underline{G}	2.5	2.7	0	15	3	2400	110v 50Hz - 120v 60Hz
						2600	200v 50Hz - 220v 60Hz
						2700	230v 50Hz - 240v 60Hz

B298 - KALREZ® seal, NC -

- Media: chemicals
- Media temperature: -10°C ÷ +130°C
- Ambient temperature: -10°C ÷ +50°C
- Seal material: Kalrez® Spectrum™ 6375
- Coil power: AC 10v_A (holding)
AC 16v_A (inrush)
DC 7w

OPTIONS

Protective treatment (e.g. code B298DKCE)

