

2/2 WAY DIRECT ACTING SOLENOID VALVE, G 1/8" - G 1/4"

COMMON FEATURES

Body material: stainless steel (1.4305 EN 10088/AISI 303)
Orifice material: stainless steel (1.4305 EN 10088/AISI 303)

Operator material: stainless steel

Protection class: IP 65 (with connector and gasket)

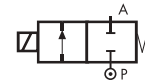
OPTIONS

Available with body thread connection 1/8" (e.g. code D298DVC), performance ratings remain the same as D299DVC.

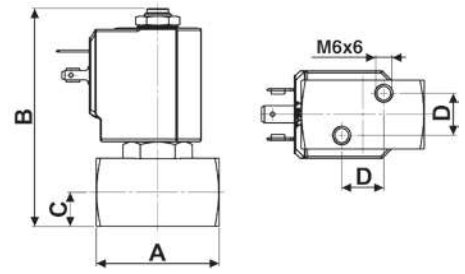
Silver shading ring (e.g. code D299DVCΔ)

NPT connection on request, minimum batch may be required (e.g. code D299DVCN)

TYPE: D298/299



Normally Closed



Flow direction overseat 1 → 2

DIMENSIONS & WEIGHTS		D298	D299
G connection	[ISO 228]	1/8"	1/4"
A	[mm]	45	45
B	[mm]	80	80
C	[mm]	12.5	12.5
D	[mm]	15.4	15.4
weight	[kg]	0,36	0,36

VALVE	nominal Ø	flow rate Kvs	OPD		
			min.	max. AC	max. DC
code	[mm]	[l/min]	[barg]	[barg]	[barg]
D299DVC	1.5	1.2	0	24	24
D299DVG	2.5	3.3	0	18	18
D299DVH	3.0	4.5	0	15	10
D299DVL	4.0	6.0	0	10	5,5
D299DVN	5.0	7.5	0	5	2,5

COILS	
code	[Volts/Hz]
7250	24v DC
7200	24v 50/60Hz
7400	110v 50Hz - 120v 60Hz
7600	200v 50Hz - 220v 60Hz
7700	230v 50Hz - 240v 60Hz

D298/299 - FKM seal, NC -

Media: water, oil, air and aggressive fluids

Media temperature: -10°C ÷ +130°C

Ambient temperature: -10°C ÷ +50°C

Seal material: foodgrade FKM

Coil power: AC 18vA (holding)

AC 36vA (inrush)

DC 14w

OPTIONS

EPDM seal, temperature max. 120°C (e.g. code D298DEH)

ATEX version see page 37

GENERAL PURPOSE

VALVE	nominal Ø	flow rate Kvs	OPD		
			min.	max. AC	max. DC
code	[mm]	[l/min]	[barg]	[barg]	[barg]
D299DKE	2.0	2.3	0	20	20
D299DKG	2.5	3.3	0	18	16
D299DKH	3.0	4.5	0	15	8

COILS	
code	[Volts/Hz]
7250	24v DC
7200	24v 50/60Hz
7400	110v 50Hz - 120v 60Hz
7600	200v 50Hz - 220v 60Hz
7700	230v 50Hz - 240v 60Hz

D298/299 - KALREZ® seal, NC -

Media: chemicals

Media temperature: -10°C ÷ +130°C

Ambient temperature: -10°C ÷ +50°C

Seal material: Kalrez® Spectrum™ 6375

Coil power: AC 18vA (holding)

AC 36vA (inrush)

DC 14w

OPTIONS

Protective treatment (e.g. code D299DKEE)

CHEMICAL INDUSTRY

VALVE	nominal Ø	flow rate Kvs	OPD		
			min.	max. AC	max. DC
code	[mm]	[l/min]	[barg]	[barg]	[barg]
D299DRB1	1.2	0,7	0	200	110
D299DRC1	1,5	1,2	0	200	80
D299DRE1	2,0	2,3	0	140	30
D299DRG1	2,5	3,3	0	90	23
D299DRH1	3,0	4,5	0	50	14

COILS	
high power - class 'H' only	
code	[Volts/Hz]
72Z1	24v DC
72K1	24v 50/60Hz
74K1	110v 50Hz - 120v 60Hz
77K1	230v 50Hz - 240v 60Hz

D298/299 - RUBY seal, NC -

Media¹: water, oil, air and aggressive fluids

Media temperature: -10°C ÷ +130°C

Ambient temperature: -10°C ÷ +50°C

Seal material: Ruby

Coil power: AC 25vA (holding)

AC 50vA (inrush)

DC 22w

NOTES

Seamless tube as standard

¹ Not 100% leak-proof when used with air/gases.

Approximate leak rate is 1,5 ml/min at max. OPD.

HIGH PRESSURE

ATTENTION: When high pressure valves are supplied without a coil, their nameplates display the max. OPD of the valve when equipped with an AC (25vA) and DC (22w) coil (as shown in the table above). **When using alternative coil power ratings please ensure to request separately the appropriate nameplate at time of order.**

2/2 WAY DIRECT ACTING SOLENOID VALVE, G 1/8" - G 1/4"

COMMON FEATURES

Body material: stainless steel (1.4305 EN 10088/AISI 303)
 Orifice material: stainless steel (1.4305 EN 10088/AISI 303)
 Operator material: stainless steel
 Protection class: IP 65 (with connector and gasket)

OPTIONS

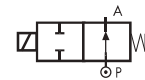
Available with body thread connection 1/8" (e.g. code RD299DVA), performance ratings remain the same as RD299DVA
 Silver shading ring (e.g. code RD299DVCA)

NPT connection on request, minimum batch may be required (e.g. code RD298DVGJ)

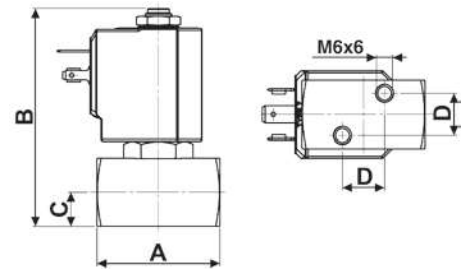
NOTES

Normally open version not available for orifice > Ø 3 mm
 Protective treatment of operators is recommended, minimum batch may be required

TYPE: RD298/299



Normally Open



Flow direction overseat 1 → 2

DIMENSIONS & WEIGHTS		RD298	RD299
G connection	[ISO 228]	1/8"	1/4"
A	[mm]	45	45
B	[mm]	77.5	77.5
C	[mm]	12.5	12.5
D	[mm]	15.4	15.4
weight	[kg]	0.36	0.36

VALVE	nominal Ø	flow rate Kvs	OPD			COILS class 'H' only	
			min.	max. AC	max. DC	code	[Volts/Hz]
code	[mm]	[l/min]	[barg]	[barg]	[barg]	code	[Volts/Hz]
RD299DVA	1.0	0.6	0	30	30	7251	24v DC
RD299DVG	2.5	3.3	0	14	14	7201	24v 50/60Hz
RD299DVH	3.0	4.5	0	9	9	7401	110v 50Hz - 120v 60Hz
						7601	200v 50Hz - 220v 60Hz
						7701	230v 50Hz - 240v 60Hz

RD298/299 - FKM seal, NO -

Media: water, oil, air and aggressive fluids
 Media temperature: -10°C ÷ +130°C
 Ambient temperature: -10°C ÷ +50°C
 Seal material: foodgrade FKM
 Coil power: AC 18vA (holding)
 AC 36vA (inrush)
 DC 14w

OPTIONS

EPDM seal, temperature max. 120°C (e.g. code RD299DEG)

GENERAL PURPOSE

VALVE	nominal Ø	flow rate Kvs	OPD			COILS class 'H' only	
			min.	max. AC	max. DC	code	[Volts/Hz]
code	[mm]	[l/min]	[barg]	[barg]	[barg]	code	[Volts/Hz]
RD299DRA	1.0	0.6	0	100	100	7251	24v DC
RD299DRB	1.2	0.7	0	85	85	7201	24v 50/60Hz
RD299DRC	1.5	1.2	0	55	55	7401	110v 50Hz - 120v 60Hz
RD299DRE	2.0	2.3	0	25	25	7601	200v 50Hz - 220v 60Hz
RD299DRG	2.5	3.3	0	19	19	7701	230v 50Hz - 240v 60Hz
RD299DRH	3.0	4.5	0	10	10		

RD298/299 - RUBY seal, NO -

Media[Ⓜ]: water and liquids
 Media temperature: -10°C ÷ +130°C
 Ambient temperature: -10°C ÷ +50°C
 Seal material: Ruby
 Coil power: AC 18vA (holding)
 AC 36vA (inrush)
 DC 14w

NOTES

Ⓜ Not 100% leak-proof when used with air/gases.
 Approximate leak rate is 1,5 ml/min at max. OPD.

HIGH PRESSURE

