

Heaters

Heaters

The Steam Tracing Blocks & Electrical Heaters are used to provide Frost Protection and to maintain Process Temperatures given that the heaters are mounted directly to the Manifold which ensures efficient Heat Transfer to the Manifold and Transmitter Body.

Steam Tracing Blocks

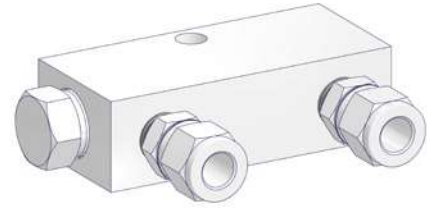
Steam Tracing is provided through a separate Stainless Steel Block which is mounted directly to the Manifold with one Stainless Steel M8 Mounting Bolt.

The Connection to the Steam Line is provided by two G 1/4 Female Ports as standard, optional by two 1/4 NPT Female Ports.

Steam Tracing Blocks – Pressure-Temperature Rating acc. to Shell MESC

Max. allowable (Working) Pressure (PS):
20 bar (290 psi) @ 210°C (410°F)

Max. allowable Temperature (TS):
220°C (428°F)



C13SA-SAS0#

Electrical Heater

Conduction Heater with self-limiting output characteristic, supplied with cable length of 1m. Is directly mounted to the Manifold with one Stainless Steel M8 Mounting Bolt.

Material: Aluminum (sea water resistant)

Size: 90 x 40 x 30 mm

Voltage: 110 V to 265 V AC (50/60 Hz)

Rating: 50 W

Ingress Protection: IP68, NEMA 4X

Type of Protection (Gas): II 2 G Ex db IIC T4

Type of Protection (Dust): II 2 D Ex tb IIIC; T 135°C

EC Examination Certificate: PTB 02 ATEX 1116 X



C13SA-SAE00

Ordering Code

MESC Code	Description	Connection	Part Number
MESC 60.98.70.*10.1	Steam Tracing Block	G 1/4 Female	C13SA-SAS0G
		1/4 NPT Female	C13SA-SAS0C
MESC 60.98.70.050.1	Electrical Heater		C13SA-SAE00

* Digits depend on compression fitting size – Fittings supplied by others.