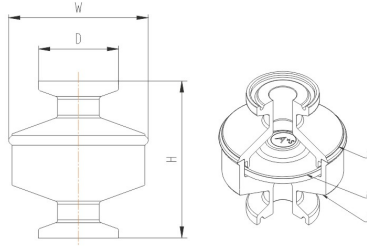


ESG®

Thermostatic Steam Trap

806 Series
Thermostatic
Steam Trap



Technical Specification

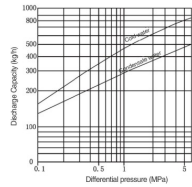
- Nominal pressure: 1.0MPa
- Max allowable pressure PMA: 1.0MPa
- Max allowable temperature TMA: 220°C
- Max working pressure PMO: 0.8MPa
- Max working temperature TMO: 176°C
- Four types of belows:

- A- Discharge condensate below saturation temperature of 3°C
- B- Discharge condensate below saturation temperature of 5°C
- C- Discharge condensate below saturation temperature of 15°C
- D- Discharge condensate below saturation temperature of 25°C

Attention: To avoid abnormal operation, accidents, or personal injury, please do not use this product beyond the specification range.

If the technical standards or regulations of a country or region have special provisions for the above specifications, the product should be used in accordance with local regulations.

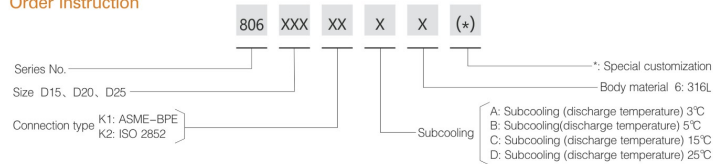
Output Chart



1. Pressure difference refers to the pressure difference between the inlet and outlet of the steam trap.
2. Recommended safety factor: not less than 2.

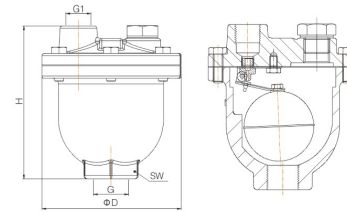
Attention: Do not use the steam trap under conditions exceeding the maximum pressure difference, otherwise condensation water may accumulate.

Order Instruction



Other Valves

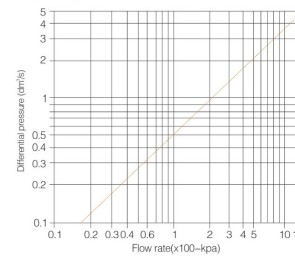
901 Series
Float Type
Air Eliminator



Technical Specification

- Nominal pressure: PN16
- Ball material: CF8M
- Seal material: FPM
- Control type: Automatic
- Medium temperature: -20°C—+ 200°C
- Applicable medium: Can be used for hot and cold water systems as well as other types of liquid medium

Differential pressure/flow rate chart



Function Principle

This valve operates automatically due to density difference between gas and liquid. When a mixture of gas and liquid enters from bottom of the valve, gas exits through the outlet at the top, while liquid pushes the float ball up and blocks the gas outlet. This valve could be easily dismantled for maintenance, usually without disturbing pipe connections.

Main Dimension

Size	G	G1	ØD	H	SW
DN15	1/2"	1/2"	122	134	47.5
DN20	3/4"	1/2"	122	134	47.5
DN25	1"	1/2"	122	134	47.5

Order Instruction

