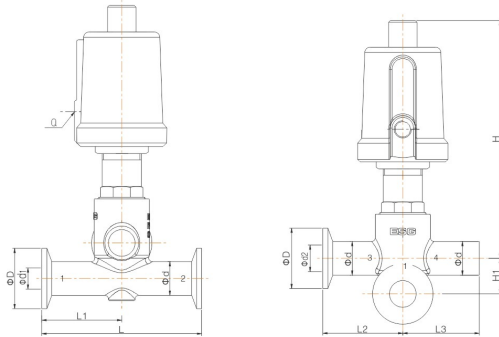




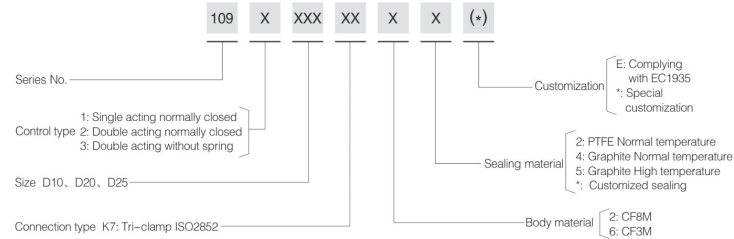
## Multi-channel Valve



### Main Dimension

Size	Actuator	Q	Ø D	Ø d	Ø d1	Ø d2	H	H1	L1	L2	L3	L
DN10	40	1/8"	34	19	12	15	134	20	45	45	43	90
DN20	50	1/8"	50.5	29.5	24	24	140	30	60	60	43	120
DN25	63	1/8"	50.5	34	29.5	29.5	165	39	65	63.5	55	130

### Order Instruction



110 Series Pneumatic Manifold Valve



### Technical Specification

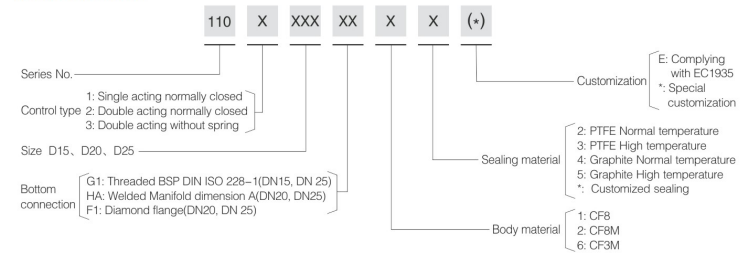
- Operating pressure: 0–16bar (0–232psi)
- Control pressure: 3–8bar (43.5–116psi)
- Control medium: Filtered compressed air or neutral gas
- Seal material: PTFE
- Body material: CF8/CF8M/CF3M and other special materials
- Applicable medium: Water, Oil, Air and other liquid
- Medium temperature: -10°C — +180°C, +25°C — +220°C
- Ambient temperature: -10°C — +80°C
- Connection type: Welded, Threaded, Diamond flange
- Control type: Single acting normally closed, Double acting normally closed, Double acting without spring
- Leakage class: DIN EN 12266 Class A

### Advantages

Manifold valve adopts three-way connection design for optimal pipeline layout. It has aesthetic appearance, compact structure, and superb performance. A great choice for material blending.

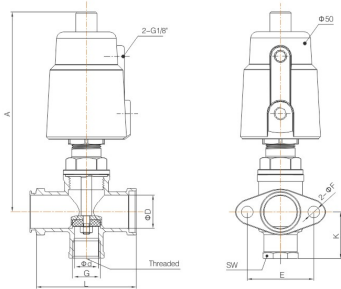


### Order Instruction



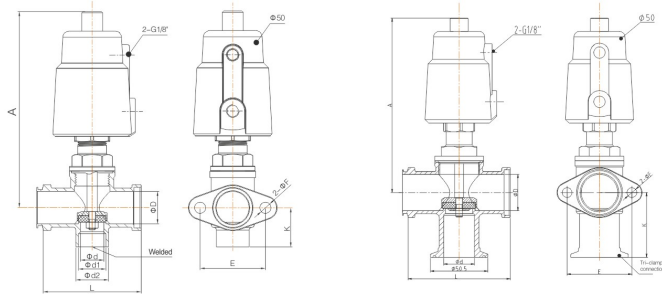


## Multi-channel Valve



Main Dimension (Threaded connection)

Size	A	K	L	ΦD	Φd	G	SW	ΦE	2-ΦF	Flow value Kv(m <sup>3</sup> /h)	Weight (kg)
DN15	153	35	76	25	18	1/2"	27	50	8.5	8.1	1.2
DN25	153	46	90	32	24	1"	39	57	8.5	14.8	1.35

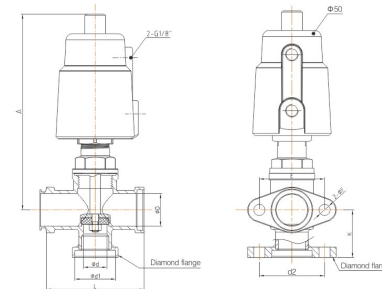


Main Dimension (Welded connection)

Size	A	K	L	ΦD	Φd	Φd1	Φd2	ΦE	2-ΦF	Flow value Kv(m <sup>3</sup> /h)	Weight (kg)
DN20	153	30	76	25	18	21	25	50	8.5	8.1	1.2
DN25	153	36	90	32	24	27	32	57	8.5	14.8	1.3

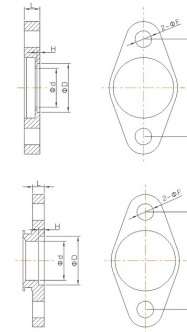
Main Dimension (Tri-clamp connection)

Size	A	K	L	ΦD	Φd	ΦE	2-ΦF	Flow value Kv(m <sup>3</sup> /h)	Weight (kg)
DN20	153	50.5	76	25	21	50	8.5	8.1	1.3
DN25	153	57	90	32	27	57	8.5	14.8	1.4



Main Dimension (Diamond flange connection)

Size	A	K	L	ΦD	Φd	Φd1	d2	E	2-ΦF	Flow value Kv(m <sup>3</sup> /h)	Weight (kg)
DN20	153	36.5	76	25	18	31.3	50	50	8.5	8.1	1.2
DN25	153	43	90	32	24	40	57	57	8.5	14.8	1.4



Name	Size	D	d	H	L	E	F	Remark
Flange cover 1	DN15/DN20	/	/	/	8	50	8.5	Blind hole conical cover
	DN25	/	/	/	8.5	57	8.5	Blind hole conical cover
Flange cover 3	DN15/DN20	25.1/25.6	20	1.5	8	50	8.5	Through hole conical cover
	DN25	32.5	28	1.5	8.5	57	8.5	Through hole conical cover

Name	Size	D	d	H	L	E	F	Remark
Flange cover 2	DN15/DN20	/	/	/	6	50	8.5	Blind hole conical cover
	DN25	/	/	/	6	57	8.5	Blind hole conical cover
Flange cover 4	DN15/DN20	25.6	20	3	6	50	8.5	Through hole conical cover
	DN25	32.5	29	1.5	6	57	8.5	Through hole conical cover

## Pressure Data Sheet

	Size	Actuator	Single acting valve operating pressure (MPa)			Double acting valve operating pressure (MPa)		
			Enter above seat ≥ P (MPa)	Enter below seat ≤ P (MPa)	Control pressure (MPa)	Enter above seat ≥ P (MPa)	Enter below seat ≤ P (MPa)	Control pressure (MPa)
Config. A	DN15	50	0-1.6	0-0.7	0.3-0.5	0-1.6	0-1.6	0.3-0.5
	DN20	50	0-1.6	0-0.7	0.3-0.5	0-1.6	0-1.6	0.3-0.5
	DN25	50	0-1.6	0-0.4	0.3-0.65	0-1.6	0-1.6	0.3-0.65
Config. B	DN15	50	0-1.6	0-1.4	0.45-0.6	0-1.6	0-1.6	0.45-0.6
	DN20	50	0-1.6	0-1.4	0.45-0.6	0-1.6	0-1.6	0.45-0.6
	DN25	50	0-1.4	0-0.8	0.45-0.7	0-1.4	0-1.6	0.45-0.7

Note: In order to ensure product performance, it is recommended to select product according to the highest value in the <= 90% pressure range