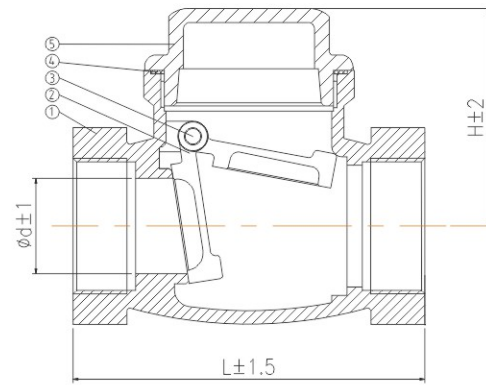


Check Valve

502 Series
Swing Check Valve



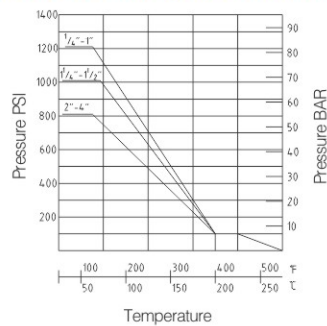
Technical Specification

- Nominal pressure: PN16
- Medium temperature: $-20^{\circ}\text{C} \sim +180^{\circ}\text{C}$
- Connection type: Threaded connection (BSP, BSPT, NPT)
- Body material: CF8/CF8M
- Seal material: Metal-to-metal seal

Part List

| No. | Part | Material |
|-----|------------|----------|
| 1 | Body | CF8/CF8M |
| 2 | DISC | CF8/CF8M |
| 3 | Hanger PIN | 304/316 |
| 4 | Gasket | RPTFE |
| 5 | Bonnet | CF8/CF8M |

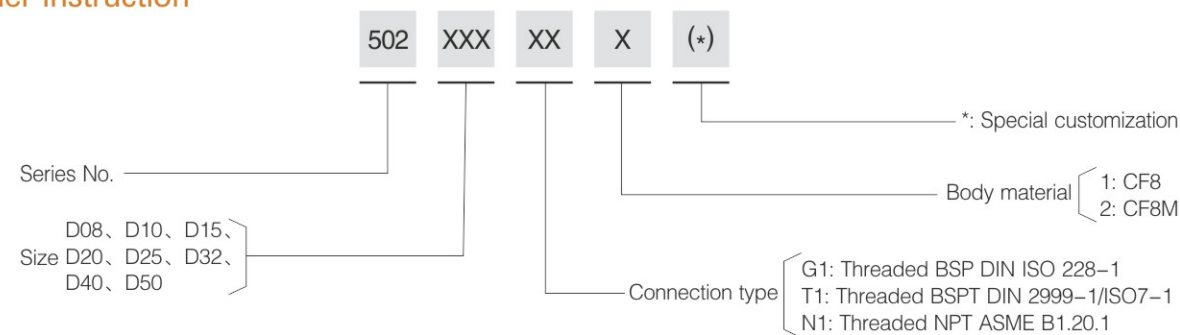
Pressure-temperature Rating



Main Dimension

| Size | DN8 | DN10 | DN15 | DN20 | DN25 | DN32 | DN40 | DN50 |
|------------|------|------|------|------|------|-------|-------|-------|
| d | 12 | 13 | 15 | 20 | 24.5 | 31 | 38 | 47 |
| L | 64 | 64 | 64 | 78 | 87 | 100.5 | 115.5 | 135.5 |
| H | 39.5 | 41.5 | 40.5 | 47 | 52 | 58 | 63 | 71 |
| Weight(Kg) | 0.25 | 0.24 | 0.24 | 0.35 | 0.56 | 0.81 | 1.15 | 1.67 |

Order Instruction



D00 Series
Clamp Type Tri-clamp
Check Valve

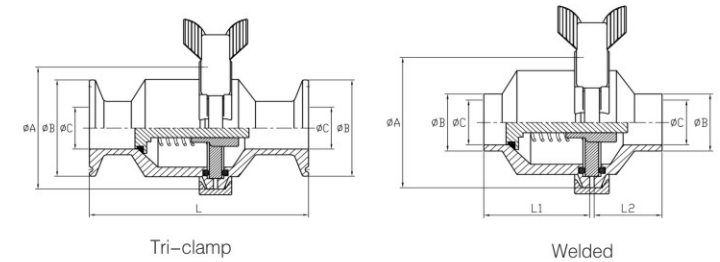


D00 Series
Clamp Type Welded
Check Valve



Technical Specification

- Size: 1/2"–6"/DN15–DN150
- Working pressure: 10bar
- Body material: 304/316/316L
- Sealing material: EPDM
- Connection type: Tri-clamp 3A, welded 3A
- Temperature: $-20^{\circ}\text{C} \sim 130^{\circ}\text{C}$
- Applications: Widely used in food, beverages, brewery, pharmaceuticals industries etc.



Main Dimension (Tri-clamp Connection)

| Size | A | B | C | L |
|------|-------|------|------|-------|
| 1/2" | 50.5 | 25 | 9.5 | 88.9 |
| 3/4" | 64 | 25 | 15.8 | 88.9 |
| 1" | 64 | 50.5 | 22.1 | 104.8 |
| 1.5" | 77.5 | 50.5 | 34.8 | 115.9 |
| 2" | 91 | 64 | 47.5 | 128.6 |
| 2.5" | 106 | 77.5 | 60.3 | 136.5 |
| 3" | 119 | 91 | 73.0 | 155.6 |
| 4" | 144.5 | 119 | 97.6 | 206.4 |

Main Dimension (Welded Connection)

| Size | A | B | C | L1 | L2 |
|------|-------|-------|-------|------|------|
| 1/2" | 50.5 | 12.7 | 9.4 | 35 | 22 |
| 3/4" | 64 | 19.05 | 15.75 | 35 | 22 |
| 1" | 64 | 25.4 | 22.1 | 47.5 | 30.5 |
| 1.5" | 77.5 | 38.1 | 34.8 | 50 | 30 |
| 2" | 91 | 50.8 | 47.5 | 58 | 30 |
| 2.5" | 106 | 63.5 | 60.2 | 58 | 37 |
| 3" | 119 | 76.2 | 72.9 | 70 | 36 |
| 4" | 144.5 | 101.6 | 97.6 | 68 | 37 |
| 6" | 217 | 152.4 | 146.8 | 156 | 59 |

Order Instruction

