



**PNEUMAX**



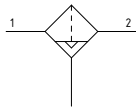
**SERIES H**  
FILTERS AND PILOTED PRESSURE REGULATORS



Filters (F)



- ▶ Double filter action: air flow centrifugation and filter element
- ▶ Filtering element made of HDPE with 60µm filtration grade
- ▶ Filter cartridge can be regenerated by washing / blowing it or replaced
- ▶ Automatic condensate drain
- ▶ Inlet pressures up to 16 bar



**Note**

In order to ensure that any fluid discharged by the auto drain assembly is adequately drained away, it is recommended you use a 6 mm fitting and tube.

Size		Technical characteristics	
Body and connections type		Aluminium body, integrated aluminium connections	
Protection and bowl type		Technopolymer protection - PA bowl	
IN / OUT connections	P version	G2" - G1 1/2"	
Assembly configuration		Stand alone	
Assembly positions		Vertical ±5°	
Filter pore size		60 µm	
Condensation drain		Automatic	

Size		Operational characteristics	
Condensation drain		Automatic	
Maximum working pressure		16 bar	
Minimum working pressure		0,5 bar	
Working temperature		-10°C...+60°C	

Size		Weights	
Aluminium body version, aluminium bowl protection and technopolymer bowl		Size 5 3191 g	

**CODING: V17TFSCC**

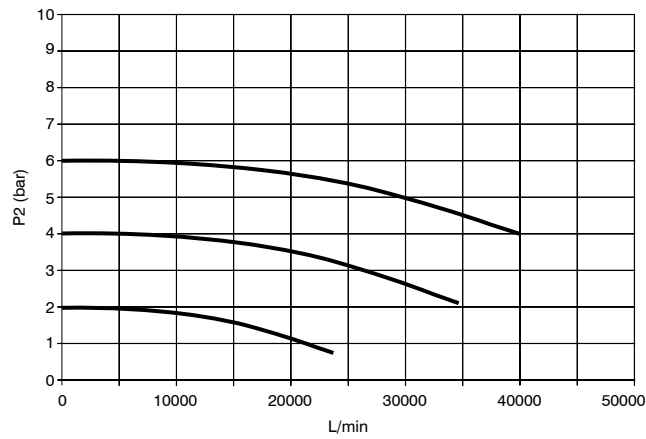
<b>V</b>	VERSION P = Aluminium body version
<b>T</b>	SIZE AND CONNECTIONS 5A = TG5 - G1 1/2" 5B = Size 5 - G2"
<b>S</b>	FILTER PORE SIZE D = 60 µm
<b>C</b>	CONDENSATION DRAIN S = Automatic drain
<b>©</b>	BOWL OPTIONS P = Metal protection - PC bowl

**Example: P175AFDSP:** Size 5 filter G1 1/2" 60 µm, automatic drain and metal bowl



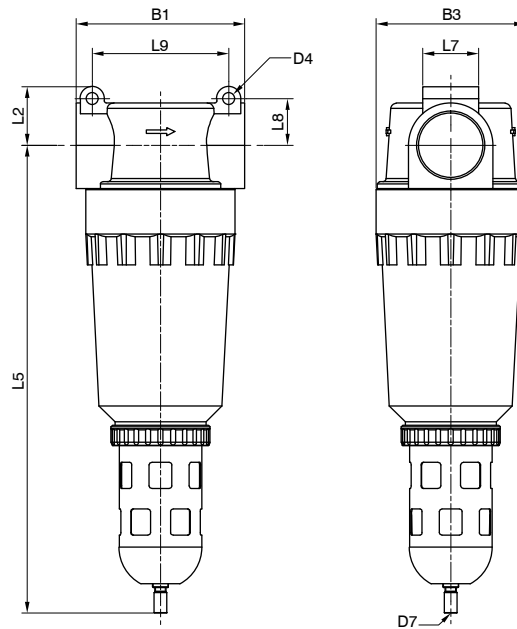
Characteristic curves

Flow rate curves



Dimensions

AIR TREATMENT

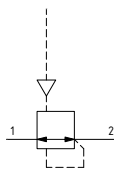


Model	B1	B3	D4	D7	L2	L5	L7	L8	L9
				Automatic drain G1/8"					
#175..	148	131	10.5	G1/8"	51	411	49	41	120

► Piloted pressure regulators (RP)



- Piloted pressure regulator
- Dual G1/8" gauge port for monitoring inlet and outlet pressure
- Inlet pressures up to 25 bar



**Note**

Always regulate the rising pressure.  
The inlet pressure must be at least 1 bar higher than the desired outlet pressure

Technical characteristics	
Size	Size 5
Body and connections type	Aluminium body, integrated aluminium connections
IN / OUT connections	G2" - G1 1/2"
Assembly configuration	Stand alone
Assembly positions	Indifferent
Pressure range	0,5...25 bar
Regulation	Pneumatic piloting
Pressure measurement	G1/8" pressure gauge connection port
Max. fittings torque IN / OUT connections	G1" metal: 35Nm
Max. fitting torque pressure gauge connection port	G1/8" metal: 15 Nm

Operational characteristics	
Size	Size 5
Maximum working pressure	25 bar
Minimum working pressure	0,5 bar
Pilot pressure range	0,5...25 bar
Working temperature	-10°C...+80°C

Weights	
Size	Size 5
Pneumatic pilot aluminum body version	4688 g

**CODING: V17TRP**

V	VERSION
	P = Aluminium body version
T	SIZE AND CONNECTIONS
	5A = TG5 - G1 1/2"
	5B = Size 5 - G2"

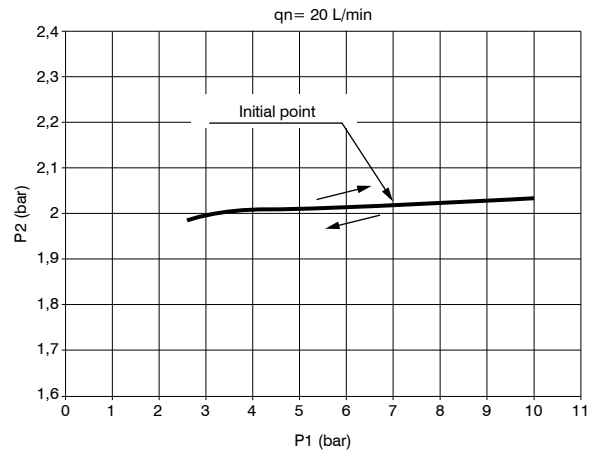
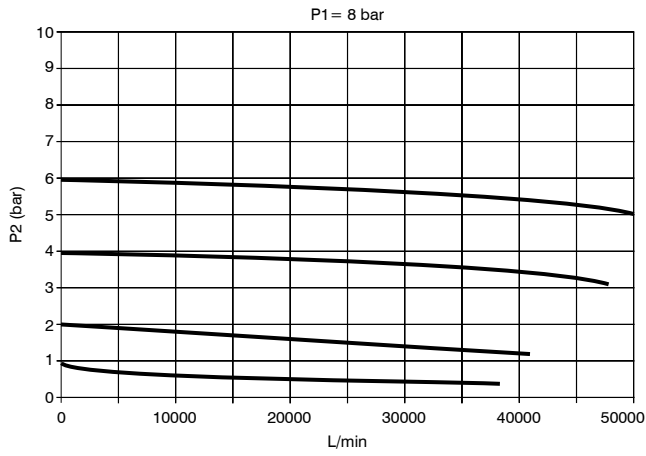
**Example: P175ARP:** Size 5 piloted pressure regulator G1 1/2"



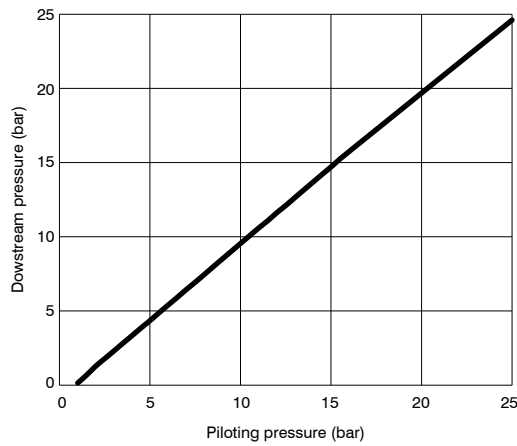
**Characteristic curves**

**Flow rate curves**

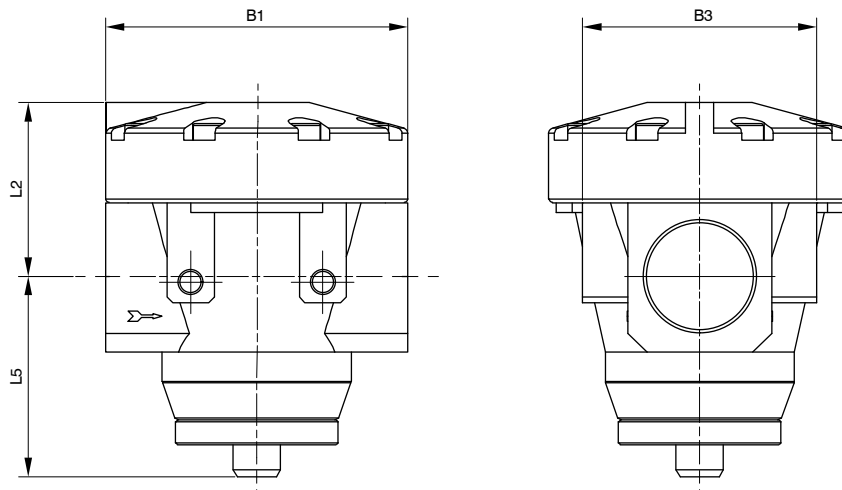
**Adjustment characteristic**



**Piloting curves**



**Dimensions**



Model	B1	B3	L2	L5
#175..	160	124	92	106

2 AIR TREATMENT



**PNEUMAX**

**PNEUMAX S.p.A.**

Via Cascina Barbellina, 10

24050 Lurano (BG) - Italy

P. +39 035 41 92 777

info@pneumaxspa.com